

Converting Colors

Hex(FCBFBB)

Have a look what the booklet for
Hex(FCBFBB) contains.

Hex(FCBFBB)	3
<i>Conversions</i>	4
<i>Details</i>	6
<i>Harmonies</i>	11
<i>Previews</i>	23
<i>Color Blindness Simulation</i>	26
<i>CSS Examples</i>	29

Color

Hex(FCBFBB)

Conversions

Conversions Part 1

Format	Color
Hex	FCBFBB
RGB	252, 191, 187
RGB Percent	99%, 75%, 73%
CMY	0.0118, 0.2510, 0.2667
CMYK	0.00, 0.24, 0.26, 0.01
HSL	4°, 92%, 86%
HSV	4°, 26%, 99%
XYZ	67.7453, 61.5449, 55.3225
YIQ	208.7830, 37.6400, 11.6880

Conversions

Conversions Part 2

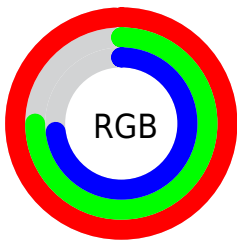
Format	Color
R_{YB}	252, 191, 187
Decimal	16564155
CIE Lab	82.67, 21.33, 10.53
CIE LCh	83, 23.785, 26.278
Yxy	61.5449, 0.3670, 0.3334
Android (android.graphics.Color)	4294754235 (0xFFFCBFBB)
YUV	208.7830, -10.7390, 37.9013
Hunter-Lab	78.4506, 16.8537, 13.1047

Details

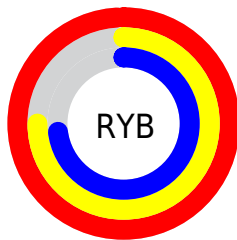
The Hex color **FCBFBB** is a light color, and the websafe version is hex **FFCCCC**. A complement of this color would be **BBF8FC**, and the grayscale version is **D1D1D1**.

A 20% lighter version of the original color is **FFF8F3**, and **C28986** is the 20% darker color. If you saturate the color by 10%, you get **FCA7A2**, and if you desaturate by 10%, it is **FCD7D4**.

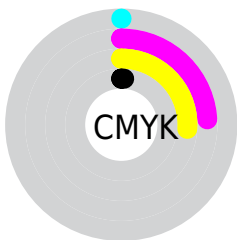
Distribution



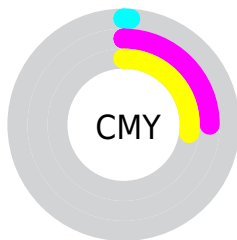
- Red (99%)
- Green (75%)
- Blue (73%)



- Red (99%)
- Yellow (75%)
- Blue (73%)



- Cyan (0%)
- Magenta (24%)
- Yellow (26%)
- Black (1%)



- Cyan (1%)
- Magenta (25%)
- Yellow (27%)

Brightness & Saturation Gradients

These gradients show how the Hex color FCBFBB changes by changing the brightness by 10 percent. The first figure shows a shift by +10% for each color and the second figure -10%.

Similar to the brightness gradients but the following saturation gradients show a change of the Hex color FCBFBB by changing the saturation by 10% instead.

 FCBFBB

 FCBFBB

FFFFFF

 DFA4A0

 FFF8F3

 C28986

 A6706D

 8B5754

 713F3D

 572827

 3E1213

 280000

 000000

 FCBFBB

 FCBFBB

 FCA7A2

 FCD7D4

 FC9089

 FCEED

 FC786F

 FCFFFF

 FC6056

 FC493D

 FC3124

 FC190B

 FC1000

Harmonies

Analogous

The Analogous color harmony consists of three colors that are next to each other on the color wheel.



F8BED1



FCBFBB



F4C4A9

Triad

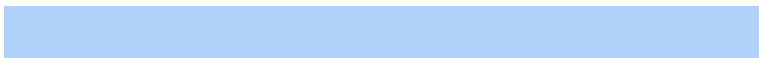
The Triadic color harmony groups three colors that are evenly spaced from another and form a triangle on the color wheel.



FCBFBB



B0D8B4



B0D1FA

Complementary

The Complementary color scheme is a pair of colors which are on the opposite of each other on the color wheel.



FCBFBB



BBF8FC

Split Complementary

Split-complementary colors differ from the complementary color scheme. The scheme consists of three colors, the original color and two neighbors of the complement color.



98D7F2



FCBFBB



9ADACA

Square

The Square scheme is like the rectangle color scheme, but the four colors are evenly spaced on the color wheel.



FCBFBB



CAD2A5



90DAE1



CEC9F6

Rectangle

The Rectangle color scheme consists of four colors that form a rectangle on the color wheel.



FCBFBB



E8C9A3



90DAE1



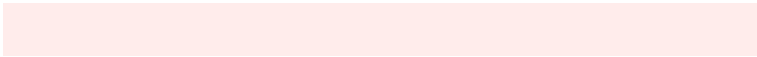
A7D3F9

Sweetspot

The Sweet Spot groups the original color and five complimentary colors.



FCBFBB



FFECEB



FCBBF9



807473



000000



808080

Same Dimension

The Same Dimension uses a secret algorithm to generate beautiful new colors.



FCBFBB



FFB5B0



FCDFBB



7D7170



BD0C00



3D0400

Inverse Universe

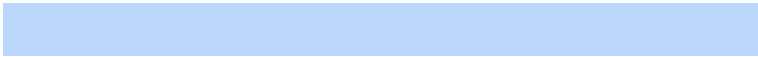
The Inverse Universe completely reimagines the original color for something new.



BBF8FC



B0FAFF



BBD8FC



707C7D



00B1BD



00393D

Previews

White Background



This preview shows how the Hex color FCBFBB looks on a white background.

Color Contrast Check

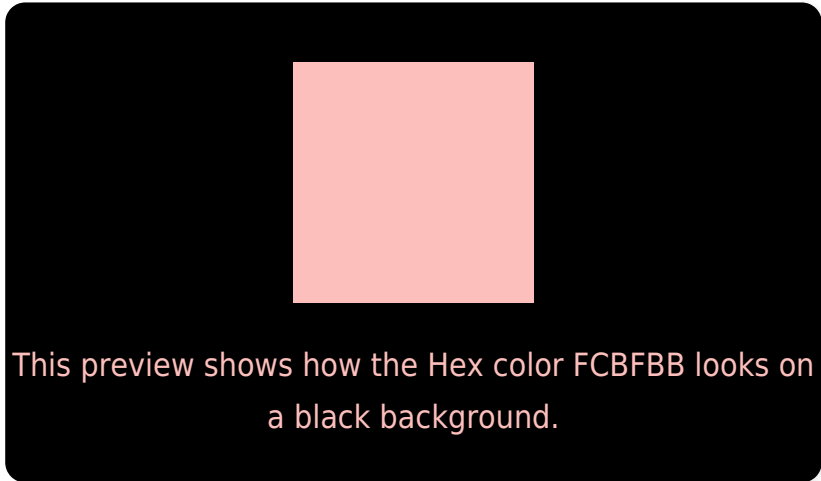
Large Text (above 18pt) WCAG AA × Fail

Any Text WCAG AA × Fail

Large Text (above 18pt) WCAG AAA × Fail

Any Text WCAG AAA × Fail

Black Background



Color Contrast Check

Large Text (above 18pt) WCAG AA ✓ Pass

Any Text WCAG AA ✓ Pass

Large Text (above 18pt) WCAG AAA ✓ Pass

Any Text WCAG AAA ✓ Pass

If you want to check with other color combinations, try the [Color Contrast Checker](#).

Hex FCBFBB Background



This preview shows how black text looks on a background with the Hex color FCBFBB.

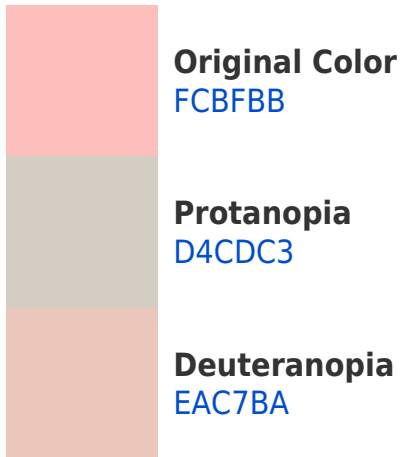


This preview shows how white text looks on a background with the Hex color FCBFBB.

Color Blindness Simulation

Color vision deficiency is a very complex topic, and I could not describe the different causes any better than Wikipedia does, so if you want to learn more, you should check out their [article about color blindness](#).

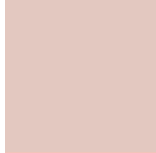
Dichromacy



Trichromacy



Original Color
FCBFBB



Protanomaly
E3C8C0



Deuteranomaly
F1C4BA

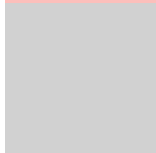


Tritanomaly
FDBEC5

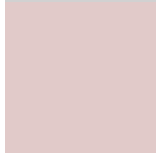
Monochromacy



Original Color
FCBFBB



Achromatopsia
D1D1D1



Achromatomaly
E1CAC9

CSS Examples

Text

The CSS property to change the color of the text to Hex FCBFBB is called "color". The color property can be set on classes, ids or directly on the HTML element.

This example shows how text in the color #FCBFBB looks like.

```
.text, #text, p{  
  color:#FCBFBB  
}
```

If you want to add a text shadow in that color use the text-shadow property, you can generate a text shadow directly with our [CSS Text Shadow Generator](#).

Here you see how black text with a 4 pixel #FCBFBB colored shadow looks like.

```
.shadow{ text-shadow: 4px 4px 2px #FCBFBB
}
```

Border

The CSS property to change the border of an element to Hex FCBFBB is called "border". The border property can be set on classes, ids or directly on the HTML element.

This example shows the color as border, it can be applied via the CSS property "border" or "border-color".

```
.border, #border, table{ border:4px solid
#FCBFBB }
```

If only the border color should be changed use the property `border-color`.

```
.border{ border-color:#FCBFBB }
```

If you want to add a box shadow in that color use:

Here you see how a box with a 4 pixel #FCBFBB colored shadow looks like.

```
.boxshadow{ -moz-box-shadow:4px 4px 4px  
4px #FCBFBB; -webkit-box-shadow:4px 4px  
4px 4px #FCBFBB; box-shadow:4px 4px 4px  
4px #FCBFBB }
```

Background

The CSS property to change the background color of an element to Hex FCBFBB is called "background". The background property can be set on classes, ids or directly on the HTML element.

```
.background, #background, body{  
background:#FCBFBB }
```

If only the background color should be changed can be used:

```
.background{ background-color:#FCBFBB }
```

This example shows the color as background, it is applied via the CSS property "background".

To optimize and compress your CSS code, you can use our [online CSS compressor and optimizer](#) based on csstidy. If you want to create a linear or radial gradient as background or border, check our [CSS Gradient Generator](#).

Hey! You found this booklet interesting? Support Converting Colors with the new Membership Option!

The pro membership hides all ads, plus gives you double the colors in the color bucket, and more awesome pro features!

[Learn more, Memberships starting at \\$2.50/m!](#)

**Follow me
on Twitter!**

@ConvertingColor