

Converting Colors

Hex(FCC1C2)

Have a look what the booklet for
Hex(FCC1C2) contains.

Hex(FCC1C2)	3
<i>Conversions</i>	4
<i>Details</i>	6
<i>Harmonies</i>	11
<i>Previews</i>	23
<i>Color Blindness Simulation</i>	26
<i>CSS Examples</i>	29

Color

Hex(FCC1C2)

Conversions

Conversions Part 1

Format	Color
Hex	FCC1C2
RGB	252, 193, 194
RGB Percent	99%, 76%, 76%
CMY	0.0118, 0.2431, 0.2392
CMYK	0.00, 0.23, 0.23, 0.01
HSL	359°, 91%, 87%
HSV	359°, 23%, 99%
XYZ	68.9525, 62.7304, 59.5129
YIQ	210.7550, 34.8430, 12.8190

Conversions

Conversions Part 2

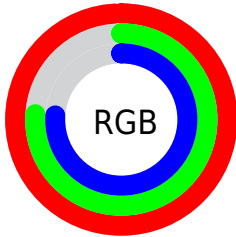
Format	Color
R _Y B	252, 193, 194
Decimal	16564674
CIE Lab	83.30, 21.25, 7.68
CIE LCh	83, 22.597, 19.879
Yxy	62.7304, 0.3606, 0.3281
Android (android.graphics.Color)	4294754754 (0xFFFC1C2)
YUV	210.7550, -8.2602, 36.1719
Hunter-Lab	79.2025, 16.7948, 10.8912

Details

The Hex color **FCC1C2** is a light color, and the websafe version is hex **FFCCCC**. A complement of this color would be **C1FCFB**, and the grayscale version is **D3D3D3**.

A 20% lighter version of the original color is **FFFAFA**, and **C28B8C** is the 20% darker color. If you saturate the color by 10%, you get **FCA8A9**, and if you desaturate by 10%, it is **FCDADB**.

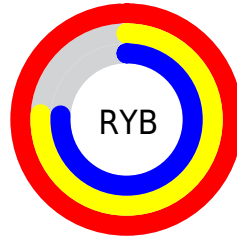
Distribution



Red (99%)

Green (76%)

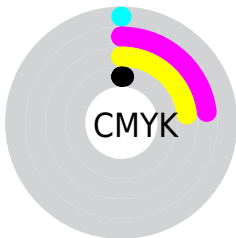
Blue (76%)



Red (99%)

Yellow (76%)

Blue (76%)

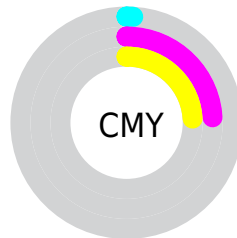


Cyan (0%)

Magenta (23%)

Yellow (23%)

Black (1%)



Cyan (1%)

Magenta (24%)

Yellow (24%)

Brightness & Saturation Gradients

These gradients show how the Hex color FCC1C2 changes by changing the brightness by 10 percent. The first figure shows a shift by +10% for each color and the second figure -10%.

Similar to the brightness gradients but the following saturation gradients show a change of the Hex color FCC1C2 by changing the saturation by 10% instead.

 FCC1C2

 FCC1C2

FFFFFF

 DFA6A7

 FFFAFA

 C28B8C

 A77173

 8B595A

 714143

 572A2D

 3F1418

 290000

 000000

 FCC1C2

 FCC1C2

 FCA8A9

 FCDADB

 FC8F90

 FCF3F4

 FC7578

 FCFFFF

 FC5C5F

 FC4346

 FC2A2D

 FC1115

 FC0004

Harmonies

Analogous

The Analogous color harmony consists of three colors that are next to each other on the color wheel.



F6C1D8



FCC1C2



F6C5B0

Triad

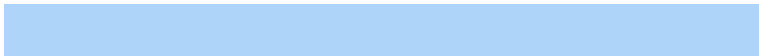
The Triadic color harmony groups three colors that are evenly spaced from another and form a triangle on the color wheel.



FCC1C2



B9D8B4



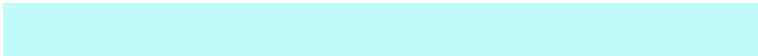
AED4F9

Complementary

The Complementary color scheme is a pair of colors which are on the opposite of each other on the color wheel.



FCC1C2



C1FCFB

Split Complementary

Split-complementary colors differ from the complementary color scheme. The scheme consists of three colors, the original color and two neighbors of the complement color.



9AD9EF



FCC1C2



A3DBC7

Square

The Square scheme is like the rectangle color scheme, but the four colors are evenly spaced on the color wheel.



FCC1C2



D1D3A7



96DCDD



CACDF7

Rectangle

The Rectangle color scheme consists of four colors that form a rectangle on the color wheel.



FCC1C2



EDC9A8



96DCDD



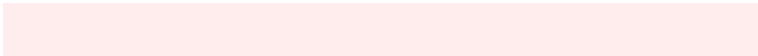
A6D6F7

Sweetspot

The Sweet Spot groups the original color and five complimentary colors.



FCC1C2



FFEDED



FAC1FC



807575



000000



808080

Same Dimension

The Same Dimension uses a secret algorithm to generate beautiful new colors.



FCC1C2



FFB8B9



FCDDC1



7D7071



BD0003



3D0001

Inverse Universe

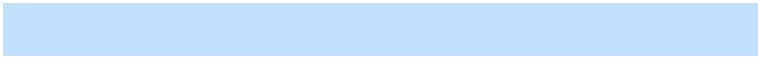
The Inverse Universe completely reimagines the original color for something new.



FCC1C2



FFB8B9



C1E0FC



7D7071



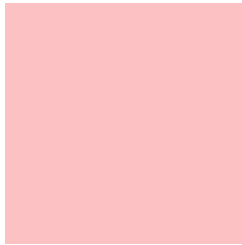
BD0003



3D0001

Previews

White Background



This preview shows how the Hex color FCC1C2 looks on a white background.

Color Contrast Check

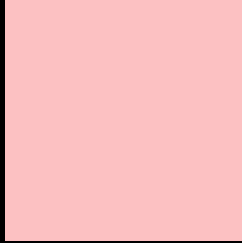
Large Text (above 18pt) WCAG AA × Fail

Any Text WCAG AA × Fail

Large Text (above 18pt) WCAG AAA × Fail

Any Text WCAG AAA × Fail

Black Background



This preview shows how the Hex color FCC1C2 looks on a black background.

Color Contrast Check

Large Text (above 18pt) WCAG AA ✓ Pass

Any Text WCAG AA ✓ Pass

Large Text (above 18pt) WCAG AAA ✓ Pass

Any Text WCAG AAA ✓ Pass

If you want to check with other color combinations, try the [Color Contrast Checker](#).

Hex FCC1C2 Background



This preview shows how black text looks on a background with the Hex color FCC1C2.

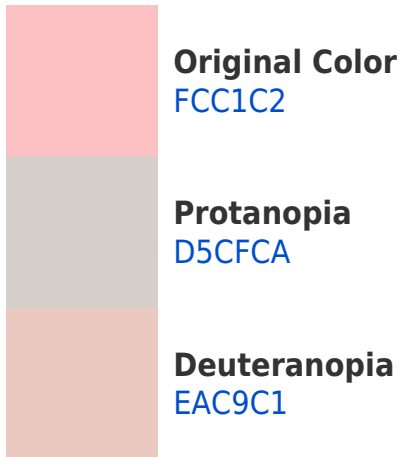


This preview shows how white text looks on a background with the Hex color FCC1C2.

Color Blindness Simulation

Color vision deficiency is a very complex topic, and I could not describe the different causes any better than Wikipedia does, so if you want to learn more, you should check out their [article about color blindness](#).

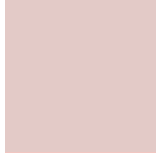
Dichromacy



Trichromacy



Original Color
FCC1C2



Protanomaly
E3CAC7



Deuteranomaly
F1C6C1

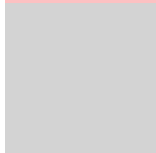


Tritanomaly
FDC0CA

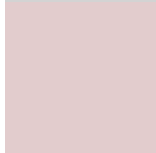
Monochromacy



Original Color
FCC1C2



Achromatopsia
D3D3D3



Achromatomaly
E2CCCD

CSS Examples

Text

The CSS property to change the color of the text to Hex FCC1C2 is called "color". The color property can be set on classes, ids or directly on the HTML element.

This example shows how text in the color #FCC1C2 looks like.

```
.text, #text, p{  
    color:#FCC1C2  
}
```

If you want to add a text shadow in that color use the text-shadow property, you can generate a text shadow directly with our [CSS Text Shadow Generator](#).

Here you see how black text with a 4 pixel #FCC1C2 colored shadow looks like.

```
.shadow{ text-shadow: 4px 4px 2px #FCC1C2
}
```

Border

The CSS property to change the border of an element to Hex FCC1C2 is called "border". The border property can be set on classes, ids or directly on the HTML element.

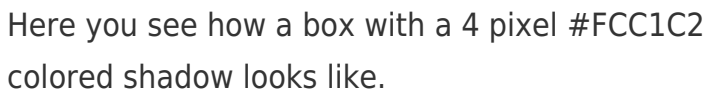
This example shows the color as border, it can be applied via the CSS property "border" or "border-color".

```
.border, #border, table{ border:4px solid
#FCC1C2 }
```

If only the border color should be changed use the property `border-color`.

```
.border{ border-color:#FCC1C2 }
```

If you want to add a box shadow in that color use:



Here you see how a box with a 4 pixel `#FCC1C2` colored shadow looks like.

```
.boxshadow{ -moz-box-shadow:4px 4px 4px  
4px #FCC1C2; -webkit-box-shadow:4px 4px  
4px 4px #FCC1C2; box-shadow:4px 4px 4px  
4px #FCC1C2 }
```

Background

The CSS property to change the background color of an element to Hex FCC1C2 is called "background". The background property can be set on classes, ids or directly on the HTML element.

```
.background, #background, body{  
background:#FCC1C2 }
```

If only the background color should be changed can be used:

```
.background{ background-color:#FCC1C2 }
```

This example shows the color as background, it is applied via the CSS property "background".

To optimize and compress your CSS code, you can use our [online CSS compressor and optimizer](#) based on csstidy. If you want to create a linear or radial gradient as background or border, check our [CSS Gradient Generator](#).

Hey! You found this booklet interesting? Support Converting Colors with the new Membership Option!

The pro membership hides all ads, plus gives you double the colors in the color bucket, and more awesome pro features!

[Learn more, Memberships starting at \\$2.50/m!](#)

**Follow me
on Twitter!**

@ConvertingColor