

Converting Colors

Hex(FCC3B9)

Have a look what the booklet for
Hex(FCC3B9) contains.

Hex(FCC3B9)	3
<i>Conversions</i>	4
<i>Details</i>	6
<i>Harmonies</i>	11
<i>Previews</i>	23
<i>Color Blindness Simulation</i>	26
<i>CSS Examples</i>	29

Color

Hex(FCC3B9)

Conversions

Conversions Part 1

Format	Color
Hex	FCC3B9
RGB	252, 195, 185
RGB Percent	99%, 76%, 73%
CMY	0.0118, 0.2353, 0.2745
CMYK	0.00, 0.23, 0.27, 0.01
HSL	9°, 92%, 86%
HSV	9°, 27%, 99%
XYZ	68.4169, 63.2284, 54.4973
YIQ	210.9030, 37.1820, 8.9740

Conversions

Conversions Part 2

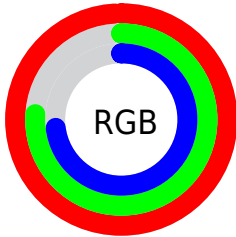
Format	Color
R _Y B	252, 197, 185
Decimal	16565177
CIE Lab	83.56, 18.96, 12.87
CIE LCh	84, 22.909, 34.165
Yxy	63.2284, 0.3676, 0.3397
Android (android.graphics.Color)	4294755257 (0xFFFC3B9)
YUV	210.9030, -12.7702, 36.0421
Hunter-Lab	79.5163, 14.4303, 15.0264

Details

The Hex color **FCC3B9** is a light color, and the websafe version is hex **FFCCCC**. A complement of this color would be **B9F2FC**, and the grayscale version is **D3D3D3**.

A 20% lighter version of the original color is **FFCF1**, and **C28D84** is the 20% darker color. If you saturate the color by 10%, you get **FCAEA0**, and if you desaturate by 10%, it is **FCD8D2**.

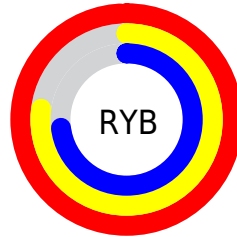
Distribution



Red (99%)

Green (76%)

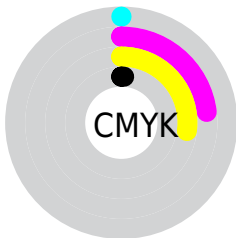
Blue (73%)



Red (99%)

Yellow (77%)

Blue (73%)

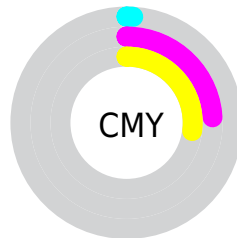


Cyan (0%)

Magenta (23%)

Yellow (27%)

Black (1%)



Cyan (1%)

Magenta (24%)

Yellow (27%)

Brightness & Saturation Gradients

These gradients show how the Hex color FCC3B9 changes by changing the brightness by 10 percent. The first figure shows a shift by +10% for each color and the second figure -10%.

Similar to the brightness gradients but the following saturation gradients show a change of the Hex color FCC3B9 by changing the saturation by 10% instead.

 FCC3B9

 FCC3B9

FFFFFF


 DFA89E

 FFFCF1

 C28D84

 A6736B

 8B5B53

 71433B

 572C26

 3E1611

 280000

 000000

 FCC3B9

 FCC3B9

 FCAEA0

 FCD8D2

 FC9887

 FCEEEB

 FC836D

 FCFFFF

 FC6D54

 FC583B

 FC4222

 FC2D09

 FC2600

Harmonies

Analogous

The Analogous color harmony consists of three colors that are next to each other on the color wheel.



FCC1CE



FCC3B9



F1C9AA

Triad

The Triadic color harmony groups three colors that are evenly spaced from another and form a triangle on the color wheel.



FCC3B9



AEDBBD



BBD1FB

Complementary

The Complementary color scheme is a pair of colors which are on the opposite of each other on the color wheel.



FCC3B9



B9F2FC

Split Complementary

Split-complementary colors differ from the complementary color scheme. The scheme consists of three colors, the original color and two neighbors of the complement color.



A2D8F6



FCC3B9



9BDDD3

Square

The Square scheme is like the rectangle color scheme, but the four colors are evenly spaced on the color wheel.



FCC3B9



C6D6AC



95DCE8



D8CAF4

Rectangle

The Rectangle color scheme consists of four colors that form a rectangle on the color wheel.



FCC3B9



E5CDA6



95DCE8



B2D3FB

Sweetspot

The Sweet Spot groups the original color and five complimentary colors.



FCC3B9



FFEEEE



FCB9F3



807573



000000



808080

Same Dimension

The Same Dimension uses a secret algorithm to generate beautiful new colors.



FCC3B9



FFBAAD



FCE3B9



7D7270



BD1C00



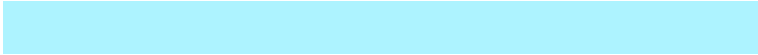
3D0900

Inverse Universe

The Inverse Universe completely reimagines the original color for something new.



B9F2FC



ADF3FF



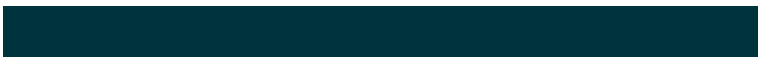
B9D2FC



707B7D



00A1BD



00343D

Previews

White Background



This preview shows how the Hex color FCC3B9 looks on a white background.

Color Contrast Check

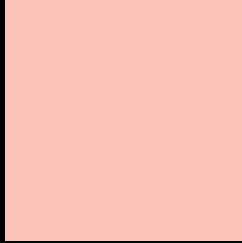
Large Text (above 18pt) WCAG AA × Fail

Any Text WCAG AA × Fail

Large Text (above 18pt) WCAG AAA × Fail

Any Text WCAG AAA × Fail

Black Background



This preview shows how the Hex color FCC3B9 looks on a black background.

Color Contrast Check

Large Text (above 18pt) WCAG AA ✓ Pass

Any Text WCAG AA ✓ Pass

Large Text (above 18pt) WCAG AAA ✓ Pass

Any Text WCAG AAA ✓ Pass

If you want to check with other color combinations, try the [Color Contrast Checker](#).

Hex FCC3B9 Background



This preview shows how black text looks on a background with the Hex color FCC3B9.

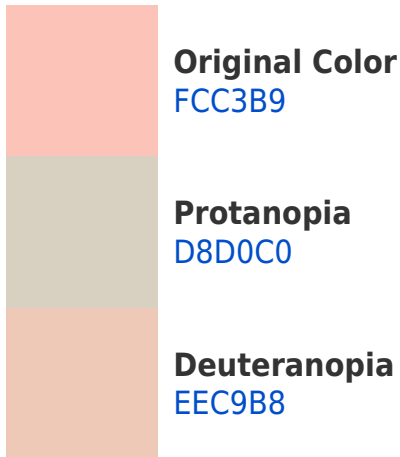


This preview shows how white text looks on a background with the Hex color FCC3B9.

Color Blindness Simulation

Color vision deficiency is a very complex topic, and I could not describe the different causes any better than Wikipedia does, so if you want to learn more, you should check out their [article about color blindness](#).

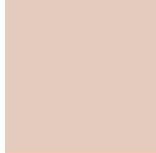
Dichromacy



Trichromacy



Original Color
FCC3B9



Protanomaly
E5CBBD



Deuteranomaly
F3C7B8

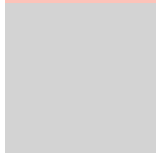


Tritanomaly
FDC1C7

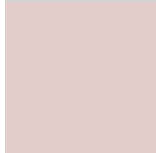
Monochromacy



Original Color
FCC3B9



Achromatopsia
D3D3D3



Achromatomaly
E2CDCA

CSS Examples

Text

The CSS property to change the color of the text to Hex FCC3B9 is called "color". The color property can be set on classes, ids or directly on the HTML element.

This example shows how text in the color #FCC3B9 looks like.

```
.text, #text, p{  
  color:#FCC3B9  
}
```

If you want to add a text shadow in that color use the text-shadow property, you can generate a text shadow directly with our [CSS Text Shadow Generator](#).

Here you see how black text with a 4 pixel #FCC3B9 colored shadow looks like.

```
.shadow{ text-shadow: 4px 4px 2px #FCC3B9
}
```

Border

The CSS property to change the border of an element to Hex FCC3B9 is called "border". The border property can be set on classes, ids or directly on the HTML element.

This example shows the color as border, it can be applied via the CSS property "border" or "border-color".

```
.border, #border, table{ border:4px solid
#FCC3B9 }
```

If only the border color should be changed use the property `border-color`.

```
.border{ border-color:#FCC3B9 }
```

If you want to add a box shadow in that color use:

Here you see how a box with a 4 pixel #FCC3B9 colored shadow looks like.

```
.boxshadow{ -moz-box-shadow:4px 4px 4px  
4px #FCC3B9; -webkit-box-shadow:4px 4px  
4px 4px #FCC3B9; box-shadow:4px 4px 4px  
4px #FCC3B9 }
```

Background

The CSS property to change the background color of an element to Hex FCC3B9 is called "background". The background property can be set on classes, ids or directly on the HTML element.

```
.background, #background, body{  
background:#FCC3B9 }
```

If only the background color should be changed can be used:

```
.background{ background-color:#FCC3B9 }
```

This example shows the color as background, it is applied via the CSS property "background".

To optimize and compress your CSS code, you can use our [online CSS compressor and optimizer](#) based on csstidy. If you want to create a linear or radial gradient as background or border, check our [CSS Gradient Generator](#).

Hey! You found this booklet interesting? Support Converting Colors with the new Membership Option!

The pro membership hides all ads, plus gives you double the colors in the color bucket, and more awesome pro features!

[Learn more, Memberships starting at \\$2.50/m!](#)

**Follow me
on Twitter!**

@ConvertingColor