

Converting Colors

Hex(FCC3D2)

Have a look what the booklet for
Hex(FCC3D2) contains.

Hex(FCC3D2)	3
<i>Conversions</i>	4
<i>Details</i>	6
<i>Harmonies</i>	11
<i>Previews</i>	23
<i>Color Blindness Simulation</i>	26
<i>CSS Examples</i>	29

Color

Hex(FCC3D2)

Conversions

Conversions Part 1

Format	Color
Hex	FCC3D2
RGB	252, 195, 210
RGB Percent	99%, 76%, 82%
CMY	0.0118, 0.2353, 0.1765
CMYK	0.00, 0.23, 0.17, 0.01
HSL	344°, 90%, 88%
HSV	344°, 23%, 99%
XYZ	71.2928, 64.3788, 69.6416
YIQ	213.7530, 29.1570, 16.7490

Conversions

Conversions Part 2

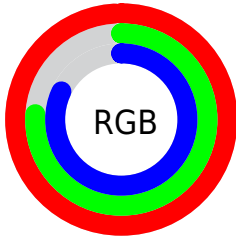
Format	Color
RYB	252, 195, 210
Decimal	16565202
CIELab	84.16, 22.56, 0.38
CIElCh	84, 22.564, 0.953
Yxy	64.3788, 0.3472, 0.3136
Android (android.graphics.Color)	4294755282 (0xFFFC3D2)
YUV	213.7530, -1.8502, 33.5426
Hunter-Lab	80.2364, 18.1898, 4.7044

Details

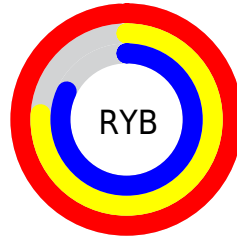
The Hex color **FCC3D2** is a light color, and the websafe version is hex **FFCCCC**. A complement of this color would be **C3FCED**, and the grayscale version is **D6D6D6**.

A 20% lighter version of the original color is **FFFCFF**, and **C38D9C** is the 20% darker color. If you saturate the color by 10%, you get **FCAABF**, and if you desaturate by 10%, it is **FCDCE5**.

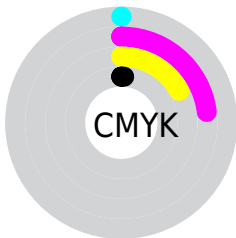
Distribution



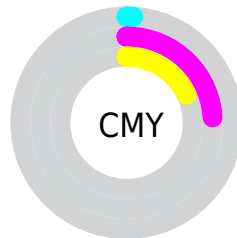
- Red (99%)
- Green (76%)
- Blue (82%)



- Red (99%)
- Yellow (76%)
- Blue (82%)



- Cyan (0%)
- Magenta (23%)
- Yellow (17%)
- Black (1%)



- Cyan (1%)
- Magenta (24%)
- Yellow (18%)

Brightness & Saturation Gradients

These gradients show how the Hex color FCC3D2 changes by changing the brightness by 10 percent. The first figure shows a shift by +10% for each color and the second figure -10%.

Similar to the brightness gradients but the following saturation gradients show a change of the Hex color FCC3D2 by changing the saturation by 10% instead.

 FCC3D2

 FCC3D2

FFFFFF

 DFA8B6

 FFFCFF

 C38D9C

 A77382

 8C5A69

 724250

 582B3A

 401524

 2A000F

 000000

 FCC3D2

 FCC3D2

 FCAABF

 FCDCE5

 FC91AD

 FCF5F7

 FC779A

 FCFFFF

 FC5E88

 FC4575

 FC2C63

 FC1350

 FC0042

Harmonies

Analogous

The Analogous color harmony consists of three colors that are next to each other on the color wheel.



EEC6E7



FCC3D2



FEC4BD

Triad

The Triadic color harmony groups three colors that are evenly spaced from another and form a triangle on the color wheel.



FCC3D2



CAD7AD



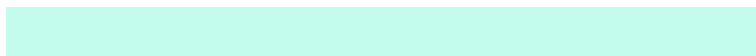
A2DAF6

Complementary

The Complementary color scheme is a pair of colors which are on the opposite of each other on the color wheel.



FCC3D2



C3FCED

Split Complementary

Split-complementary colors differ from the complementary color scheme. The scheme consists of three colors, the original color and two neighbors of the complement color.



98DDE7



FCC3D2



B2DCBD

Square

The Square scheme is like the rectangle color scheme, but the four colors are evenly spaced on the color wheel.



FCC3D2



E2D1A8



9FDED2



BAD4FC

Rectangle

The Rectangle color scheme consists of four colors that form a rectangle on the color wheel.



FCC3D2



F8C8B2



9FDED2



9DDBF2

Sweetspot

The Sweet Spot groups the original color and five complimentary colors.



FCC3D2



FFEDF2



EDC3FC



807578



000000



808080

Same Dimension

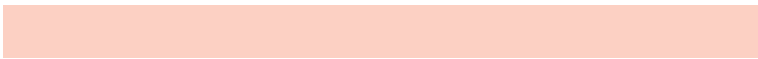
The Same Dimension uses a secret algorithm to generate beautiful new colors.



FCC3D2



FFBACC



FCD0C3



7D7074



BD0032



3D0010

Inverse Universe

The Inverse Universe completely reimagines the original color for something new.



FCC3D2



FFBACC



C3EFFC



7D7074



BD0032



3D0010

Previews

White Background



This preview shows how the Hex color FCC3D2 looks on a white background.

Color Contrast Check

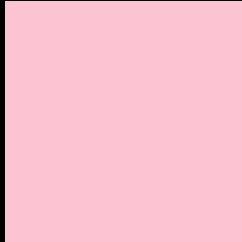
Large Text (above 18pt) WCAG AA × Fail

Any Text WCAG AA × Fail

Large Text (above 18pt) WCAG AAA × Fail

Any Text WCAG AAA × Fail

Black Background



This preview shows how the Hex color FCC3D2 looks on a black background.

Color Contrast Check

Large Text (above 18pt) WCAG AA ✓ Pass

Any Text WCAG AA ✓ Pass

Large Text (above 18pt) WCAG AAA ✓ Pass

Any Text WCAG AAA ✓ Pass

If you want to check with other color combinations, try the [Color Contrast Checker](#).

Hex FCC3D2 Background



This preview shows how black text looks on a background with the Hex color FCC3D2.



This preview shows how white text looks on a background with the Hex color FCC3D2.

Color Blindness Simulation

Color vision deficiency is a very complex topic, and I could not describe the different causes any better than Wikipedia does, so if you want to learn more, you should check out their [article about color blindness](#).

Dichromacy



Original Color
FCC3D2

Protanopia
D4D1DA

Deuteranopia
E7CBD0

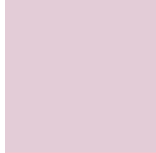


Tritanopia
FCC3D2

Trichromacy



Original Color
FCC3D2



Protanomaly
E3CCD7



Deuteranomaly
EFC8D1

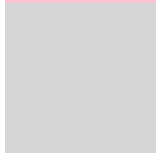


Tritanomaly
FCC3D2

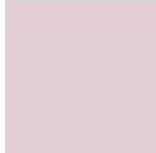
Monochromacy



Original Color
FCC3D2



Achromatopsia
D6D6D6



Achromatomaly
E4CFD5

CSS Examples

Text

The CSS property to change the color of the text to Hex FCC3D2 is called "color". The color property can be set on classes, ids or directly on the HTML element.

This example shows how text in the color #FCC3D2 looks like.

```
.text, #text, p{  
    color:#FCC3D2  
}
```

If you want to add a text shadow in that color use the text-shadow property, you can generate a text shadow directly with our [CSS Text Shadow Generator](#).

Here you see how black text with a 4 pixel #FCC3D2 colored shadow looks like.

```
.shadow{ text-shadow: 4px 4px 2px #FCC3D2
}
```

Border

The CSS property to change the border of an element to Hex FCC3D2 is called "border". The border property can be set on classes, ids or directly on the HTML element.

This example shows the color as border, it can be applied via the CSS property "border" or "border-color".

```
.border, #border, table{ border:4px solid
#FCC3D2 }
```

If only the border color should be changed use the property `border-color`.

```
.border{ border-color:#FCC3D2 }
```

If you want to add a box shadow in that color use:

Here you see how a box with a 4 pixel #FCC3D2 colored shadow looks like.

```
.boxshadow{ -moz-box-shadow:4px 4px 4px  
4px #FCC3D2; -webkit-box-shadow:4px 4px  
4px 4px #FCC3D2; box-shadow:4px 4px 4px  
4px #FCC3D2 }
```

Background

The CSS property to change the background color of an element to Hex FCC3D2 is called "background". The background property can be set on classes, ids or directly on the HTML element.

```
.background, #background, body{  
background:#FCC3D2 }
```

If only the background color should be changed can be used:

```
.background{ background-color:#FCC3D2 }
```

This example shows the color as background, it is applied via the CSS property "background".

To optimize and compress your CSS code, you can use our [online CSS compressor and optimizer](#) based on csstidy. If you want to create a linear or radial gradient as background or border, check our [CSS Gradient Generator](#).

Hey! You found this booklet interesting? Support Converting Colors with the new Membership Option!

The pro membership hides all ads, plus gives you double the colors in the color bucket, and more awesome pro features!

[Learn more, Memberships starting at \\$2.50/m!](#)

**Follow me
on Twitter!**

@ConvertingColor