

Converting Colors

Hex(FCC4C1)

Have a look what the booklet for
Hex(FCC4C1) contains.

Hex(FCC4C1)	3
<i>Conversions</i>	4
<i>Details</i>	6
<i>Harmonies</i>	11
<i>Previews</i>	23
<i>Color Blindness Simulation</i>	26
<i>CSS Examples</i>	29

Color

Hex(FCC4C1)

Conversions

Conversions Part 1

Format	Color
Hex	FCC4C1
RGB	252, 196, 193
RGB Percent	99%, 77%, 76%
CMY	0.0118, 0.2314, 0.2431
CMYK	0.00, 0.22, 0.23, 0.01
HSL	3°, 91%, 87%
HSV	3°, 23%, 99%
XYZ	69.5105, 64.0256, 59.1466
YIQ	212.4020, 34.3390, 10.9390

Conversions

Conversions Part 2

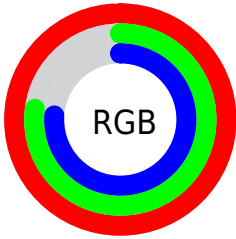
Format	Color
R_{YB}	252, 196, 193
Decimal	16565441
CIE Lab	83.98, 19.53, 9.19
CIE LCh	84, 21.588, 25.196
Yxy	64.0256, 0.3608, 0.3323
Android (android.graphics.Color)	4294755521 (0xFFFC4C1)
YUV	212.4020, -9.5652, 34.7274
Hunter-Lab	80.0160, 15.0363, 12.1849

Details

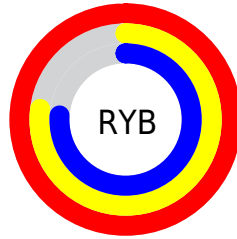
The Hex color **FCC4C1** is a light color, and the websafe version is hex **FFCCCC**. A complement of this color would be **C1F9FC**, and the grayscale version is **D4D4D4**.

A 20% lighter version of the original color is **FFFDF9**, and **C28E8C** is the 20% darker color. If you saturate the color by 10%, you get **FCACA8**, and if you desaturate by 10%, it is **FCDCDA**.

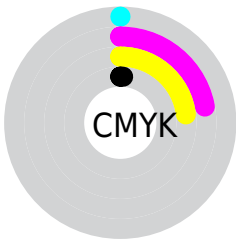
Distribution



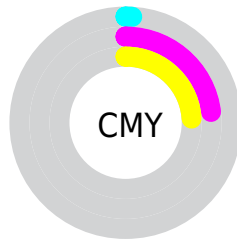
- Red (99%)
- Green (77%)
- Blue (76%)



- Red (99%)
- Yellow (77%)
- Blue (76%)



- Cyan (0%)
- Magenta (22%)
- Yellow (23%)
- Black (1%)



- Cyan (1%)
- Magenta (23%)
- Yellow (24%)

Brightness & Saturation Gradients

These gradients show how the Hex color FCC4C1 changes by changing the brightness by 10 percent. The first figure shows a shift by +10% for each color and the second figure -10%.

Similar to the brightness gradients but the following saturation gradients show a change of the Hex color FCC4C1 by changing the saturation by 10% instead.

 FCC4C1

 FCC4C1

FFFFFF

 DFA9A6

 FFFDF9

 C28E8C

 A77472

 8C5B5A

 714442

 582D2C

 3F1718

 290000

 000000

 FCC4C1

 FCC4C1

 FCACA8

 FCDCDA

 FC948F

 FCF4F3

 FC7C75

 FCFFFF

 FC645C

 FC4C43

 FC342A

 FC1D11

 FC0D00

Harmonies

Analogous

The Analogous color harmony consists of three colors that are next to each other on the color wheel.



F8C3D6



FCC4C1



F5C8B1

Triad

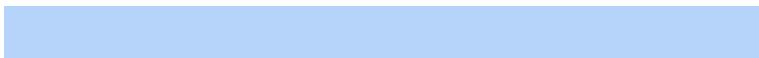
The Triadic color harmony groups three colors that are evenly spaced from another and form a triangle on the color wheel.



FCC4C1



B7DABA



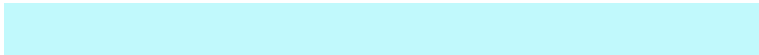
B6D4F9

Complementary

The Complementary color scheme is a pair of colors which are on the opposite of each other on the color wheel.



FCC4C1



C1F9FC

Split Complementary

Split-complementary colors differ from the complementary color scheme. The scheme consists of three colors, the original color and two neighbors of the complement color.



A1DAF2



FCC4C1



A4DDCD

Square

The Square scheme is like the rectangle color scheme, but the four colors are evenly spaced on the color wheel.



FCC4C1



CFD5AC



9ADDE2



D1CDF6

Rectangle

The Rectangle color scheme consists of four colors that form a rectangle on the color wheel.



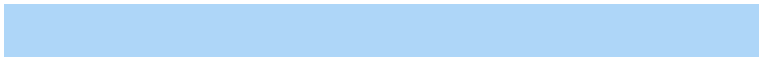
FCC4C1



EBCDAB



9ADDE2



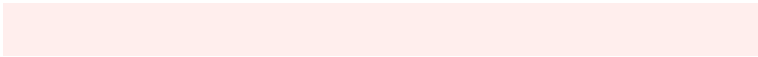
AED6F8

Sweetspot

The Sweet Spot groups the original color and five complimentary colors.



FCC4C1



FFEEED



FCC1F9



807675



000000



808080

Same Dimension

The Same Dimension uses a secret algorithm to generate beautiful new colors.



FCC4C1



FFBBB8



FCE1C1



7D7170



BD0A00



3D0300

Inverse Universe

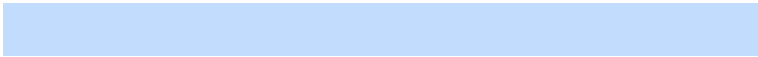
The Inverse Universe completely reimagines the original color for something new.



C1F9FC



B8FBFF



C1DCFC



707C7D



00B3BD



003A3D

Previews

White Background



This preview shows how the Hex color FCC4C1 looks on a white background.

Color Contrast Check

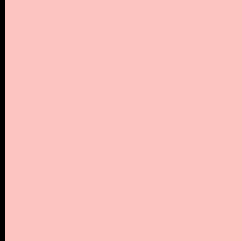
Large Text (above 18pt) WCAG AA × Fail

Any Text WCAG AA × Fail

Large Text (above 18pt) WCAG AAA × Fail

Any Text WCAG AAA × Fail

Black Background



This preview shows how the Hex color FCC4C1 looks on a black background.

Color Contrast Check

Large Text (above 18pt) WCAG AA ✓ Pass

Any Text WCAG AA ✓ Pass

Large Text (above 18pt) WCAG AAA ✓ Pass

Any Text WCAG AAA ✓ Pass

If you want to check with other color combinations, try the [Color Contrast Checker](#).

Hex FCC4C1 Background



This preview shows how black text looks on a background with the Hex color FCC4C1.

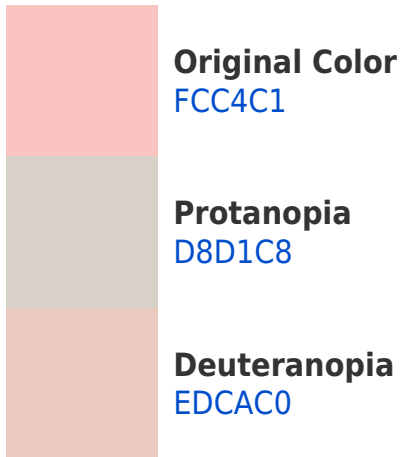


This preview shows how white text looks on a background with the Hex color FCC4C1.

Color Blindness Simulation

Color vision deficiency is a very complex topic, and I could not describe the different causes any better than Wikipedia does, so if you want to learn more, you should check out their [article about color blindness](#).

Dichromacy



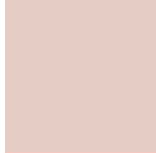


Tritanopia
FEC2D1

Trichromacy



Original Color
FCC4C1



Protanomaly
E5CCC5



Deuteranomaly
F2C8C0

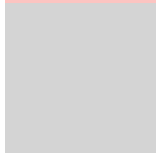


Tritanomaly
FDC3CB

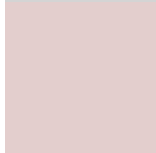
Monochromacy



Original Color
FCC4C1



Achromatopsia
D4D4D4



Achromatomaly
E3CECD

CSS Examples

Text

The CSS property to change the color of the text to Hex FCC4C1 is called "color". The color property can be set on classes, ids or directly on the HTML element.

This example shows how text in the color #FCC4C1 looks like.

```
.text, #text, p{  
    color:#FCC4C1  
}
```

If you want to add a text shadow in that color use the text-shadow property, you can generate a text shadow directly with our [CSS Text Shadow Generator](#).

Here you see how black text with a 4 pixel #FCC4C1 colored shadow looks like.

```
.shadow{ text-shadow: 4px 4px 2px #FCC4C1
}
```

Border

The CSS property to change the border of an element to Hex FCC4C1 is called "border". The border property can be set on classes, ids or directly on the HTML element.

This example shows the color as border, it can be applied via the CSS property "border" or "border-color".

```
.border, #border, table{ border:4px solid
#FCC4C1 }
```

If only the border color should be changed use the property `border-color`.

```
.border{ border-color:#FCC4C1 }
```

If you want to add a box shadow in that color use:

Here you see how a box with a 4 pixel #FCC4C1 colored shadow looks like.

```
.boxshadow{ -moz-box-shadow:4px 4px 4px  
4px #FCC4C1; -webkit-box-shadow:4px 4px  
4px 4px #FCC4C1; box-shadow:4px 4px 4px  
4px #FCC4C1 }
```

Background

The CSS property to change the background color of an element to Hex FCC4C1 is called "background". The background property can be set on classes, ids or directly on the HTML element.

```
.background, #background, body{  
background:#FCC4C1 }
```

If only the background color should be changed can be used:

```
.background{ background-color:#FCC4C1 }
```

This example shows the color as background, it is applied via the CSS property "background".

To optimize and compress your CSS code, you can use our [online CSS compressor and optimizer](#) based on csstidy. If you want to create a linear or radial gradient as background or border, check our [CSS Gradient Generator](#).

Hey! You found this booklet interesting? Support Converting Colors with the new Membership Option!

The pro membership hides all ads, plus gives you double the colors in the color bucket, and more awesome pro features!

[Learn more, Memberships starting at \\$2.50/m!](#)

**Follow me
on Twitter!**

@ConvertingColor