

# Converting Colors

Hex(FCC4C8)

Have a look what the booklet for  
Hex(FCC4C8) contains.

<b>Hex(FCC4C8)</b> .....	3
<i><b>Conversions</b></i> .....	4
<i><b>Details</b></i> .....	6
<i><b>Harmonies</b></i> .....	11
<i><b>Previews</b></i> .....	23
<i><b>Color Blindness Simulation</b></i> .....	26
<i><b>CSS Examples</b></i> .....	29

# **Color**

**Hex(FCC4C8)**

# Conversions

## Conversions Part 1

Format	Color
Hex	FCC4C8
RGB	252, 196, 200
RGB Percent	99%, 77%, 78%
CMY	0.0118, 0.2314, 0.2157
CMYK	0.00, 0.22, 0.21, 0.01
HSL	356°, 90%, 88%
HSV	356°, 22%, 99%
XYZ	70.3101, 64.3454, 63.3577
YIQ	213.2000, 32.0920, 13.1160

# Conversions

## Conversions Part 2

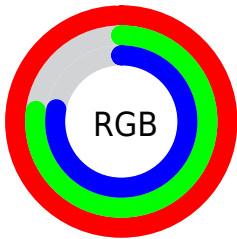
<b>Format</b>	<b>Color</b>
R <sub>Y</sub> B	252, 196, 200
Decimal	16565448
CIE Lab	84.15, 20.54, 5.69
CIE LCh	84, 21.313, 15.491
Yxy	64.3454, 0.3551, 0.3250
Android (android.graphics.Color)	4294755528 (0xFFFC4C8)
YUV	213.2000, -6.5076, 34.0276
Hunter-Lab	80.2156, 16.0805, 9.3211

# Details

The Hex color **FCC4C8** is a light color, and the websafe version is hex **FFCCCC**. A complement of this color would be **C4FCF8**, and the grayscale version is **D5D5D5**.

A 20% lighter version of the original color is **FFFDFD**, and **C38E92** is the 20% darker color. If you saturate the color by 10%, you get **FCABB1**, and if you desaturate by 10%, it is **FCDDDF**.

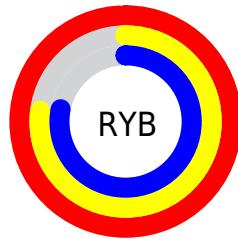
# Distribution



Red (99%)

Green (77%)

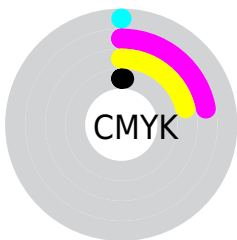
Blue (78%)



Red (99%)

Yellow (77%)

Blue (78%)

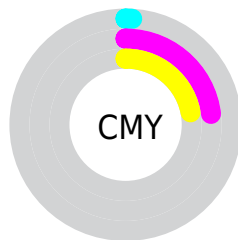


Cyan (0%)

Magenta (22%)

Yellow (21%)

Black (1%)



Cyan (1%)

Magenta (23%)

Yellow (22%)

# Brightness & Saturation Gradients

These gradients show how the Hex color FCC4C8 changes by changing the brightness by 10 percent. The first figure shows a shift by +10% for each color and the second figure -10%.

Similar to the brightness gradients but the following saturation gradients show a change of the Hex color FCC4C8 by changing the saturation by 10% instead.



 FCC4C8

 FCC4C8

FFFFFF

 DFA9AD

 FFFDFD

 C38E92

 A77478

 8C5B60

 724348

 582D32

 3F171D

 2A0002

 000000

 FCC4C8

 FCC4C8

 FCABB1

 FCDDDF

 FC9299

 FCF6F7

 FC7882

 FCFFFF

 FC5F6A

 FC4653

 FC2D3C

 FC1424

 FC0012

# Harmonies

## Analogous

The Analogous color harmony consists of three colors that are next to each other on the color wheel.



F4C5DC



FCC4C8



F8C7B6

# Triad

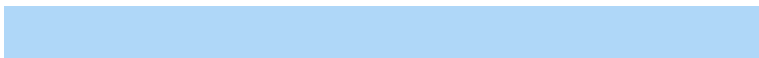
The Triadic color harmony groups three colors that are evenly spaced from another and form a triangle on the color wheel.



FCC4C8



C0D9B5



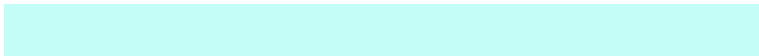
AFD7F8

# Complementary

The Complementary color scheme is a pair of colors which are on the opposite of each other on the color wheel.



FCC4C8



C4FCF8

# Split Complementary

Split-complementary colors differ from the complementary color scheme. The scheme consists of three colors, the original color and two neighbors of the complement color.



9EDBEE



FCC4C8



AADDC7

# Square

The Square scheme is like the rectangle color scheme, but the four colors are evenly spaced on the color wheel.



FCC4C8



D7D4AB



9DDEDC



C9D0F8

# Rectangle

The Rectangle color scheme consists of four colors that form a rectangle on the color wheel.



FCC4C8



F0CBAE



9DDEDC



A8D8F6

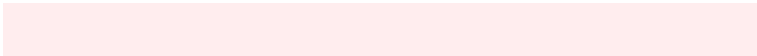


# Sweetspot

The Sweet Spot groups the original color and five complimentary colors.



FCC4C8



FFEDEE



F7C4FC



807576



000000



808080



# Same Dimension

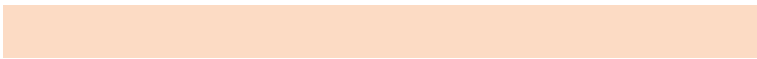
The Same Dimension uses a secret algorithm to generate beautiful new colors.



FCC4C8



FFBABF



FCDBC4



7D7071



BD000D



3D0004



# Inverse Universe

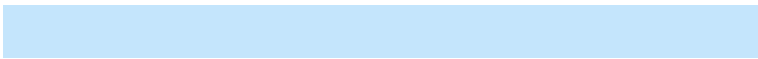
The Inverse Universe completely reimagines the original color for something new.



FCC4C8



FFBABF



C4E5FC



7D7071



BD000D



3D0004



# Previews

## White Background



This preview shows how the Hex color FCC4C8 looks on a white background.

## Color Contrast Check

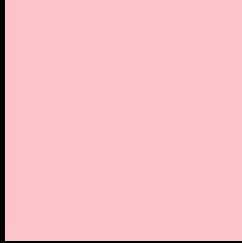
Large Text (above 18pt) WCAG AA × Fail

Any Text WCAG AA × Fail

Large Text (above 18pt) WCAG AAA × Fail

Any Text WCAG AAA × Fail

# Black Background



This preview shows how the Hex color FCC4C8 looks on a black background.

## Color Contrast Check

Large Text (above 18pt) WCAG AA ✓ Pass

Any Text WCAG AA ✓ Pass

Large Text (above 18pt) WCAG AAA ✓ Pass

Any Text WCAG AAA ✓ Pass

If you want to check with other color combinations, try the [Color Contrast Checker](#).



## Hex FCC4C8 Background



This preview shows how black text looks on a background with the Hex color FCC4C8.

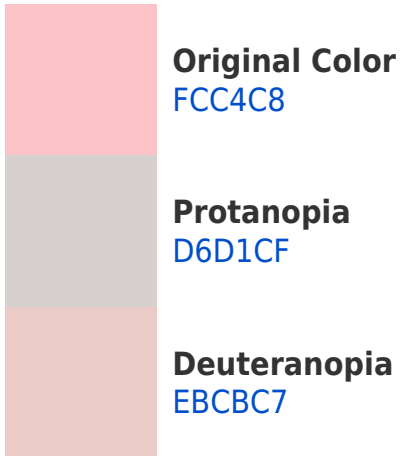


This preview shows how white text looks on a background with the Hex color FCC4C8.

# Color Blindness Simulation

Color vision deficiency is a very complex topic, and I could not describe the different causes any better than Wikipedia does, so if you want to learn more, you should check out their [article about color blindness](#).

## Dichromacy

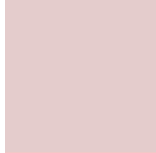




# Trichromacy



**Original Color**  
FCC4C8



**Protanomaly**  
E4CCCC



**Deuteranomaly**  
F1C8C7

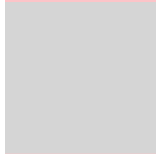


**Tritanomaly**  
FDC3CE

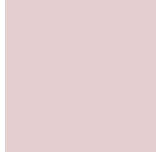
# Monochromacy



**Original Color**  
FCC4C8



**Achromatopsia**  
D5D5D5



**Achromatomaly**  
E3CFD0

# CSS Examples

## Text

The CSS property to change the color of the text to Hex FCC4C8 is called "color". The color property can be set on classes, ids or directly on the HTML element.

This example shows how text in the color #FCC4C8 looks like.

```
.text, #text, p{  
    color:#FCC4C8  
}
```

If you want to add a text shadow in that color use the text-shadow property, you can generate a text shadow directly with our [CSS Text Shadow Generator](#).

Here you see how black text with a 4 pixel #FCC4C8 colored shadow looks like.

```
.shadow{ text-shadow: 4px 4px 2px #FCC4C8
}
```

## Border

The CSS property to change the border of an element to Hex FCC4C8 is called "border". The border property can be set on classes, ids or directly on the HTML element.

This example shows the color as border, it can be applied via the CSS property "border" or "border-color".

```
.border, #border, table{ border:4px solid
#FCC4C8 }
```

If only the border color should be changed use the property `border-color`.

```
.border{ border-color:#FCC4C8 }
```

If you want to add a box shadow in that color use:

Here you see how a box with a 4 pixel #FCC4C8 colored shadow looks like.

```
.boxshadow{ -moz-box-shadow:4px 4px 4px  
4px #FCC4C8; -webkit-box-shadow:4px 4px  
4px 4px #FCC4C8; box-shadow:4px 4px 4px  
4px #FCC4C8 }
```

# Background

The CSS property to change the background color of an element to Hex FCC4C8 is called "background". The background property can be set on classes, ids or directly on the HTML element.

```
.background, #background, body{  
background:#FCC4C8 }
```

If only the background color should be changed can be used:

```
.background{ background-color:#FCC4C8 }
```

This example shows the color as background, it is applied via the CSS property "background".

To optimize and compress your CSS code, you can use our [online CSS compressor and optimizer](#) based on csstidy. If you want to create a linear or radial gradient as background or border, check our [CSS Gradient Generator](#).



Hey! You found this booklet interesting? Support Converting Colors with the new Membership Option!

The pro membership hides all ads, plus gives you double the colors in the color bucket, and more awesome pro features!

**[Learn more, Memberships starting at \\$2.50/m!](#)**

**Follow me  
on Twitter!**

@ConvertingColor