

Converting Colors

Hex(FCC9C9)

Have a look what the booklet for
Hex(FCC9C9) contains.

Hex(FCC9C9)	3
<i>Conversions</i>	4
<i>Details</i>	6
<i>Harmonies</i>	11
<i>Previews</i>	23
<i>Color Blindness Simulation</i>	26
<i>CSS Examples</i>	29

Color

Hex(FCC9C9)

Conversions

Conversions Part 1

Format	Color
Hex	FCC9C9
RGB	252, 201, 201
RGB Percent	99%, 79%, 79%
CMY	0.0118, 0.2118, 0.2118
CMYK	0.00, 0.20, 0.20, 0.01
HSL	0°, 89%, 89%
HSV	0°, 20%, 99%
XYZ	71.5741, 66.6858, 64.3576
YIQ	216.2490, 30.3960, 10.8120

Conversions

Conversions Part 2

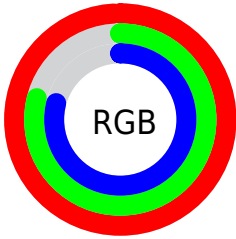
Format	Color
R_{YB}	252, 201, 201
Decimal	16566729
CIE _{Lab}	85.35, 18.06, 6.89
CIE _{LCh}	85, 19.330, 20.873
Yxy	66.6858, 0.3532, 0.3291
Android (android.graphics.Color)	4294756809 (0xFFFC9C9)
YUV	216.2490, -7.5178, 31.3536
Hunter-Lab	81.6614, 13.5434, 10.4363

Details

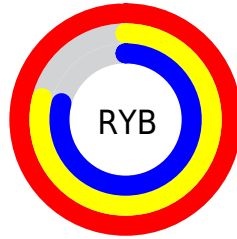
The Hex color **FCC9C9** is a light color, and the websafe version is hex **FFCCCC**. A complement of this color would be **C9FCFC**, and the grayscale version is **D8D8D8**.

A 20% lighter version of the original color is **FFFFFF**, and **C39393** is the 20% darker color. If you saturate the color by 10%, you get **FCB0B0**, and if you desaturate by 10%, it is **FCE2E2**.

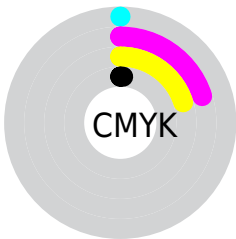
Distribution



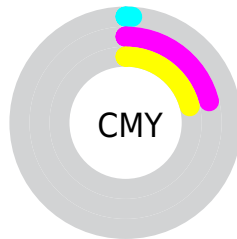
- Red (99%)
- Green (79%)
- Blue (79%)



- Red (99%)
- Yellow (79%)
- Blue (79%)



- Cyan (0%)
- Magenta (20%)
- Yellow (20%)
- Black (1%)



- Cyan (1%)
- Magenta (21%)
- Yellow (21%)

Brightness & Saturation Gradients

These gradients show how the Hex color FCC9C9 changes by changing the brightness by 10 percent. The first figure shows a shift by +10% for each color and the second figure -10%.

Similar to the brightness gradients but the following saturation gradients show a change of the Hex color FCC9C9 by changing the saturation by 10% instead.

 FCC9C9

FFFFFF

 FCC9C9

 DFAEAE

 C39393

 A77979

 8C6061

 724849

 583132

 401B1D

 2A0404

 000000

 FCC9C9

 FCC9C9

 FCB0B0

 FCE2E2

 FC9797

 FCFBFB

 FC7D7D

 FCFFFF

 FC6464

 FC4B4B

 FC3232

 FC1919

 FC0000

Harmonies

Analogous

The Analogous color harmony consists of three colors that are next to each other on the color wheel.



F7C9DC



FCC9C9



F7CCBA

Triad

The Triadic color harmony groups three colors that are evenly spaced from another and form a triangle on the color wheel.



FCC9C9



C1DDBE



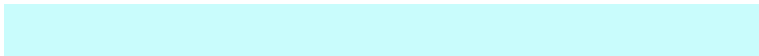
BAD9F9

Complementary

The Complementary color scheme is a pair of colors which are on the opposite of each other on the color wheel.



FCC9C9



C9FCFC

Split Complementary

Split-complementary colors differ from the complementary color scheme. The scheme consists of three colors, the original color and two neighbors of the complement color.



A9DDF1



FCC9C9



AFE0CF

Square

The Square scheme is like the rectangle color scheme, but the four colors are evenly spaced on the color wheel.



FCC9C9



D6D8B3



A5E0E2



D2D2F7

Rectangle

The Rectangle color scheme consists of four colors that form a rectangle on the color wheel.



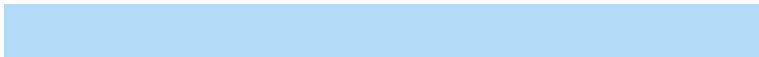
FCC9C9



EFD0B3



A5E0E2



B3DAF7

Sweetspot

The Sweet Spot groups the original color and five complimentary colors.



FCC9C9



FFF0F0



FCC9FC



807777



000000



808080

Same Dimension

The Same Dimension uses a secret algorithm to generate beautiful new colors.



FCC9C9



FFC2C2



FCE3C9



7D7070



BD0000



3D0000

Inverse Universe

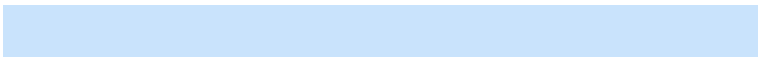
The Inverse Universe completely reimagines the original color for something new.



C9FCFC



C2FFFF



C9E3FC



707D7D



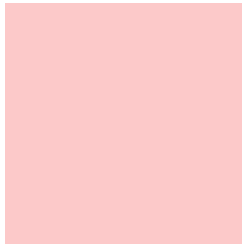
00BDBD



003D3D

Previews

White Background



This preview shows how the Hex color FCC9C9 looks on a white background.

Color Contrast Check

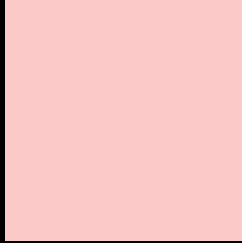
Large Text (above 18pt) WCAG AA × Fail

Any Text WCAG AA × Fail

Large Text (above 18pt) WCAG AAA × Fail

Any Text WCAG AAA × Fail

Black Background



This preview shows how the Hex color FCC9C9 looks on a black background.

Color Contrast Check

Large Text (above 18pt) WCAG AA ✓ Pass

Any Text WCAG AA ✓ Pass

Large Text (above 18pt) WCAG AAA ✓ Pass

Any Text WCAG AAA ✓ Pass

If you want to check with other color combinations, try the [Color Contrast Checker](#).

Hex FCC9C9 Background



This preview shows how black text looks on a background with the Hex color FCC9C9.

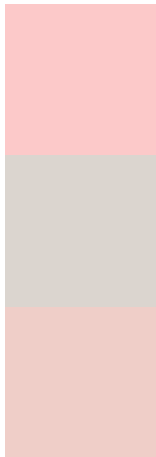


This preview shows how white text looks on a background with the Hex color FCC9C9.

Color Blindness Simulation

Color vision deficiency is a very complex topic, and I could not describe the different causes any better than Wikipedia does, so if you want to learn more, you should check out their [article about color blindness](#).

Dichromacy



Original Color
FCC9C9

Protanopia
DBD5CF

Deuteranopia
EFCEC8

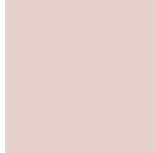


Tritanopia
FEC7D6

Trichromacy



Original Color
FCC9C9



Protanomaly
E7D1CD



Deuteranomaly
F4CCC8

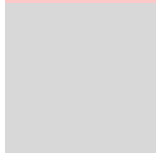


Tritanomaly
FDC8D1

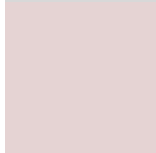
Monochromacy



Original Color
FCC9C9



Achromatopsia
D8D8D8



Achromatomaly
E5D3D3

CSS Examples

Text

The CSS property to change the color of the text to Hex FCC9C9 is called "color". The color property can be set on classes, ids or directly on the HTML element.

This example shows how text in the color #FCC9C9 looks like.

```
.text, #text, p{  
    color:#FCC9C9  
}
```

If you want to add a text shadow in that color use the text-shadow property, you can generate a text shadow directly with our [CSS Text Shadow Generator](#).

Here you see how black text with a 4 pixel #FCC9C9 colored shadow looks like.

```
.shadow{ text-shadow: 4px 4px 2px #FCC9C9
}
```

Border

The CSS property to change the border of an element to Hex FCC9C9 is called "border". The border property can be set on classes, ids or directly on the HTML element.

This example shows the color as border, it can be applied via the CSS property "border" or "border-color".

```
.border, #border, table{ border:4px solid
#FCC9C9 }
```

If only the border color should be changed use the property `border-color`.

```
.border{ border-color:#FCC9C9 }
```

If you want to add a box shadow in that color use:

Here you see how a box with a 4 pixel #FCC9C9 colored shadow looks like.

```
.boxshadow{ -moz-box-shadow:4px 4px 4px  
4px #FCC9C9; -webkit-box-shadow:4px 4px  
4px 4px #FCC9C9; box-shadow:4px 4px 4px  
4px #FCC9C9 }
```

Background

The CSS property to change the background color of an element to Hex FCC9C9 is called "background". The background property can be set on classes, ids or directly on the HTML element.

```
.background, #background, body{  
background:#FCC9C9 }
```

If only the background color should be changed can be used:

```
.background{ background-color:#FCC9C9 }
```

This example shows the color as background, it is applied via the CSS property "background".

To optimize and compress your CSS code, you can use our [online CSS compressor and optimizer](#) based on csstidy. If you want to create a linear or radial gradient as background or border, check our [CSS Gradient Generator](#).

Hey! You found this booklet interesting? Support Converting Colors with the new Membership Option!

The pro membership hides all ads, plus gives you double the colors in the color bucket, and more awesome pro features!

[Learn more, Memberships starting at \\$2.50/m!](#)

**Follow me
on Twitter!**

@ConvertingColor