

Converting Colors

Hex(FD4C80)

Have a look what the booklet for
Hex(FD4C80) contains.

Hex(FD4C80)	3
<i>Conversions</i>	4
<i>Details</i>	6
<i>Harmonies</i>	11
<i>Previews</i>	23
<i>Color Blindness Simulation</i>	26
<i>CSS Examples</i>	29

Color

Hex(FD4C80)

Conversions

Conversions Part 1

Format	Color
Hex	FD4C80
RGB	253, 76, 128
RGB Percent	99%, 30%, 50%
CMY	0.0078, 0.7020, 0.4980
CMYK	0.00, 0.70, 0.49, 0.01
HSL	342°, 98%, 65%
HSV	342°, 70%, 99%
XYZ	46.9887, 27.6100, 23.2748
YIQ	134.8510, 88.8000, 53.6960

Conversions

Conversions Part 2

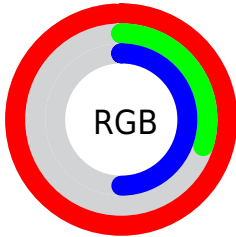
Format	Color
RYB	253, 76, 128
Decimal	16600192
CIELab	59.53, 69.78, 10.65
CIElCh	60, 70.583, 8.677
Yxy	27.6100, 0.4801, 0.2821
Android (android.graphics.Color)	4294790272 (0xFFFD4C80)
YUV	134.8510, -3.3775, 103.6167
Hunter-Lab	52.5453, 67.6699, 10.5194

Details

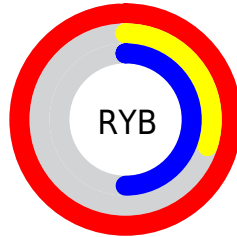
The Hex color **FD4C80** is a light color, and the websafe version is hex **FF6699**. The color can be described as light washed rose. A complement of this color would be **4CFDC9**, and the grayscale version is **878787**.

A 20% lighter version of the original color is **FF88B5**, and **BE004F** is the 20% darker color. If you saturate the color by 10%, you get **FD336E**, and if you desaturate by 10%, it is **FD6592**.

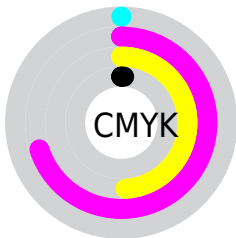
Distribution



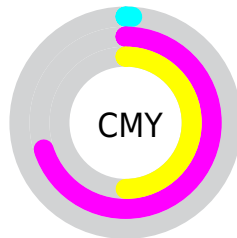
- Red (99%)
- Green (30%)
- Blue (50%)



- Red (99%)
- Yellow (30%)
- Blue (50%)



- Cyan (0%)
- Magenta (70%)
- Yellow (49%)
- Black (1%)



- Cyan (1%)
- Magenta (70%)
- Yellow (50%)

Brightness & Saturation Gradients

These gradients show how the Hex color FD4C80 changes by changing the brightness by 10 percent. The first figure shows a shift by +10% for each color and the second figure -10%.

Similar to the brightness gradients but the following saturation gradients show a change of the Hex color FD4C80 by changing the saturation by 10% instead.

 FD4C80

 FD4C80

FFFFFF

 DE2967

 FF88B5

 BE004F

 FFA5D0

 A00039

 FFC3EC

 810024

 FFE0FF

 63000E

FFFEFF

 470004

 260001

 000000

 FD4C80

 FD4C80

 FD336E

 FD6592

 FD195C

 FD7FA4

 FD004A

 FD98B6

 FDB1C7

 FDCBD9

 FDE4EB

 FDFDFD

 FDFFFF

Harmonies

Analogous

The Analogous color harmony consists of three colors that are next to each other on the color wheel.



E658BE



FD4C80



F25F45

Triad

The Triadic color harmony groups three colors that are evenly spaced from another and form a triangle on the color wheel.



FD4C80



57A120



00A2FF

Complementary

The Complementary color scheme is a pair of colors which are on the opposite of each other on the color wheel.



FD4C80



4CFDC9

Split Complementary

Split-complementary colors differ from the complementary color scheme. The scheme consists of three colors, the original color and two neighbors of the complement color.



00AADC



FD4C80



00A95F

Square

The Square scheme is like the rectangle color scheme, but the four colors are evenly spaced on the color wheel.



FD4C80



9C9200



00ACA0



0091FF

Rectangle

The Rectangle color scheme consists of four colors that form a rectangle on the color wheel.



FD4C80



DD721E



00ACA0



00A6F9

Sweetspot

The Sweet Spot groups the original color and five complimentary colors.



FD4C80



FFC9D9



C84CFD



806069



000000



808080

Same Dimension

The Same Dimension uses a secret algorithm to generate beautiful new colors.



FD4C80



FF2968



FD6F4C



807376



BF0038



400013

Inverse Universe

The Inverse Universe completely reimagines the original color for something new.



FD4C80



FF2968



4CDAFD



807376



BF0038



400013

Previews

White Background



This preview shows how the Hex color FD4C80 looks on a white background.

Color Contrast Check

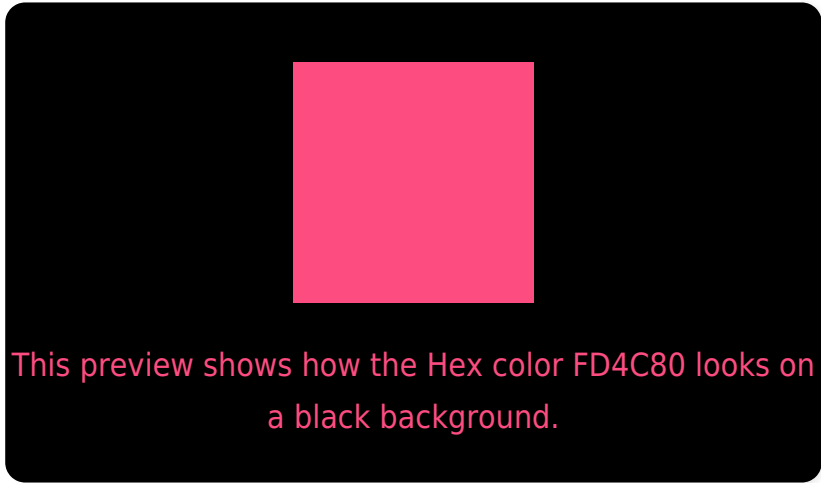
Large Text (above 18pt) WCAG AA ✓ Pass

Any Text WCAG AA × Fail

Large Text (above 18pt) WCAG AAA × Fail

Any Text WCAG AAA × Fail

Black Background



Color Contrast Check

Large Text (above 18pt) WCAG AA ✓ Pass

Any Text WCAG AA ✓ Pass

Large Text (above 18pt) WCAG AAA ✓ Pass

Any Text WCAG AAA × Fail

If you want to check with other color combinations, try the [Color Contrast Checker](#).

Hex FD4C80 Background



This preview shows how black text looks on a background with the Hex color FD4C80.



This preview shows how white text looks on a background with the Hex color FD4C80.

Color Blindness Simulation

Color vision deficiency is a very complex topic, and I could not describe the different causes any better than Wikipedia does, so if you want to learn more, you should check out their [article about color blindness](#).

Dichromacy

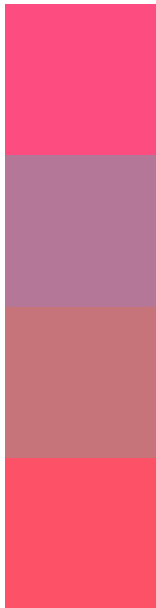


Original Color
FD4C80

Protanopia
8C8FA4

Deuteranopia
A68A77

Trichromacy



Original Color
FD4C80

Protanomaly
B57797

Deuteranomaly
C6737A

Tritanomaly
FC5167

Monochromacy



Original Color
FD4C80

Achromatopsia
878787

Achromatomaly
B27284

CSS Examples

Text

The CSS property to change the color of the text to Hex FD4C80 is called "color". The color property can be set on classes, ids or directly on the HTML element.

This example shows how text in the color #FD4C80 looks like.

```
.text, #text, p{  
    color:#FD4C80  
}
```

If you want to add a text shadow in that color use the text-shadow property, you can generate a text shadow directly with our [CSS Text Shadow Generator](#).

Here you see how black text with a 4 pixel #FD4C80 colored shadow looks like.

```
.shadow{ text-shadow: 4px 4px 2px #FD4C80
}
```

Border

The CSS property to change the border of an element to Hex FD4C80 is called "border". The border property can be set on classes, ids or directly on the HTML element.

This example shows the color as border, it can be applied via the CSS property "border" or "border-color".

```
.border, #border, table{ border:4px solid
#FD4C80 }
```

If only the border color should be changed use the property `border-color`.

```
.border{ border-color:#FD4C80 }
```

If you want to add a box shadow in that color use:

Here you see how a box with a 4 pixel #FD4C80 colored shadow looks like.

```
.boxshadow{ -moz-box-shadow:4px 4px 4px  
4px #FD4C80; -webkit-box-shadow:4px 4px  
4px 4px #FD4C80; box-shadow:4px 4px 4px  
4px #FD4C80 }
```

Background

The CSS property to change the background color of an element to Hex FD4C80 is called "background". The background property can be set on classes, ids or directly on the HTML element.

```
.background, #background, body{  
background:#FD4C80 }
```

If only the background color should be changed can be used:

```
.background{ background-color:#FD4C80 }
```

This example shows the color as background, it is applied via the CSS property "background".

To optimize and compress your CSS code, you can use our [online CSS compressor and optimizer](#) based on csstidy. If you want to create a linear or radial gradient as background or border, check our [CSS Gradient Generator](#).

Hey! You found this booklet interesting? Support Converting Colors with the new Membership Option!

The pro membership hides all ads, plus gives you double the colors in the color bucket, and more awesome pro features!

[Learn more, Memberships starting at \\$2.50/m!](#)

**Follow me
on Twitter!**

@ConvertingColor