

# Converting Colors

Hex(FD4F87)

Have a look what the booklet for  
Hex(FD4F87) contains.

<b>Hex(FD4F87)</b> .....	3
<b><i>Conversions</i></b> .....	4
<b><i>Details</i></b> .....	6
<b><i>Harmonies</i></b> .....	11
<b><i>Previews</i></b> .....	23
<b><i>Color Blindness Simulation</i></b> .....	26
<b><i>CSS Examples</i></b> .....	29

# **Color**

**Hex(FD4F87)**

# Conversions

## Conversions Part 1

Format	Color
Hex	FD4F87
RGB	253, 79, 135
RGB Percent	99%, 31%, 53%
CMY	0.0078, 0.6902, 0.4706
CMYK	0.00, 0.69, 0.47, 0.01
HSL	341°, 98%, 65%
HSV	341°, 69%, 99%
XYZ	47.6772, 28.2239, 25.8566
YIQ	137.4100, 85.7280, 54.3040

# Conversions

## Conversions Part 2

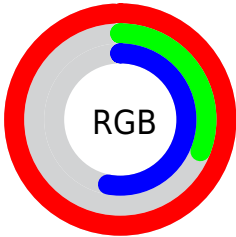
<b>Format</b>	<b>Color</b>
<b>R<sub>YB</sub></b>	253, 79, 135
Decimal	16600967
CIE <sub>Lab</sub>	60.09, 69.30, 7.34
CIE <sub>LCh</sub>	60, 69.689, 6.045
Yxy	28.2239, 0.4685, 0.2774
Android (android.graphics.Color)	4294791047 (0xFFFD4F87)
YUV	137.4100, -1.1881, 101.3724
Hunter-Lab	53.1262, 67.2210, 8.3318

# Details

The Hex color **FD4F87** is a light color, and the websafe version is hex **FF6699**. The color can be described as light washed rose. A complement of this color would be **4FFDC5**, and the grayscale version is **898989**.

A 20% lighter version of the original color is **FF8ABC**, and **BF0056** is the 20% darker color. If you saturate the color by 10%, you get **FD3676**, and if you desaturate by 10%, it is **FD6898**.

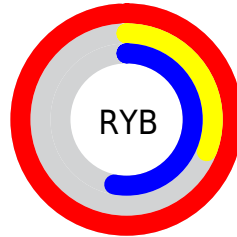
# Distribution



Red (99%)

Green (31%)

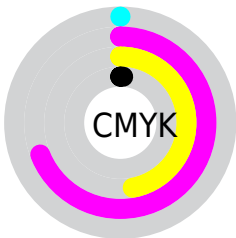
Blue (53%)



Red (99%)

Yellow (31%)

Blue (53%)

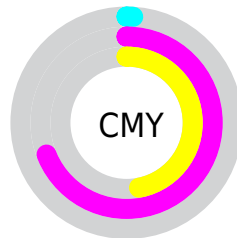


Cyan (0%)

Magenta (69%)

Yellow (47%)

Black (1%)



Cyan (1%)

Magenta (69%)

Yellow (47%)

# Brightness & Saturation Gradients

These gradients show how the Hex color FD4F87 changes by changing the brightness by 10 percent. The first figure shows a shift by +10% for each color and the second figure -10%.

Similar to the brightness gradients but the following saturation gradients show a change of the Hex color FD4F87 by changing the saturation by 10% instead.



 FD4F87

 FD4F87

FFFFFF

 DE2D6E

 FF8ABC

 BF0056

 FFA8D8

 A0003F

 FFC5F4

 820029

 FFE3FF

 640015

 480004

 280001

 000000

 FD4F87

 FD4F87

 FD3676

 FD6898

 FD1C65

 FD82A9

 FD0354

 FD9BBA

 FD0051

 FDB4CC

 FDCEDD

 FDE7EE

FDFFFF

# Harmonies

## Analogous

The Analogous color harmony consists of three colors that are next to each other on the color wheel.



E35DC4



FD4F87



F55F4C

# Triad

The Triadic color harmony groups three colors that are evenly spaced from another and form a triangle on the color wheel.



FD4F87



61A11E



00A4FF

# Complementary

The Complementary color scheme is a pair of colors which are on the opposite of each other on the color wheel.



FD4F87



4FFDC5

# Split Complementary

Split-complementary colors differ from the complementary color scheme. The scheme consists of three colors, the original color and two neighbors of the complement color.



00ACD8



FD4F87



00AA5C

# Square

The Square scheme is like the rectangle color scheme, but the four colors are evenly spaced on the color wheel.



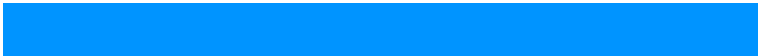
FD4F87



A29200



00AD9C



0094FF

# Rectangle

The Rectangle color scheme consists of four colors that form a rectangle on the color wheel.



FD4F87



E17227



00AD9C



00A8F6



# Sweetspot

The Sweet Spot groups the original color and five complimentary colors.



FD4F87



FFC9DB



C34FFD



80606A



000000



808080



# Same Dimension

The Same Dimension uses a secret algorithm to generate beautiful new colors.



FD4F87



FF2B6F



FD6C4F



807377



BF003E



400015



# Inverse Universe

The Inverse Universe completely reimagines the original color for something new.



FD4F87



FF2B6F



4FE0FD



807377



BF003E



400015



# Previews

## White Background



This preview shows how the Hex color FD4F87 looks on a white background.

## Color Contrast Check

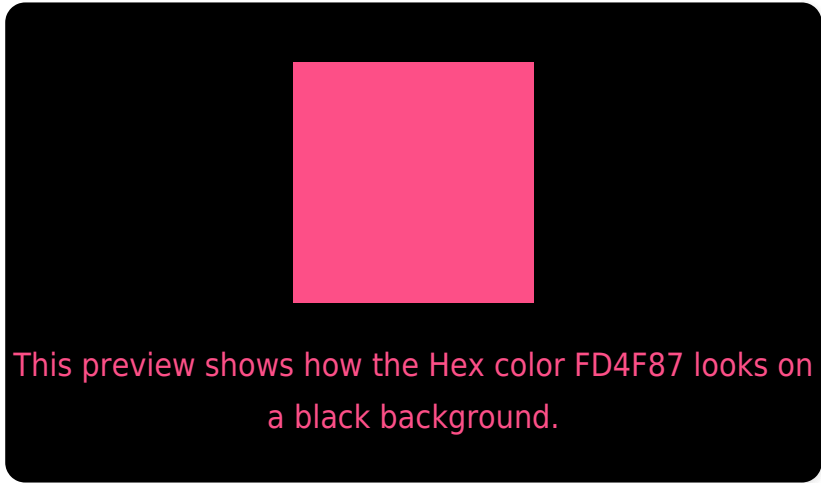
Large Text (above 18pt) WCAG AA ✓ Pass

Any Text WCAG AA × Fail

Large Text (above 18pt) WCAG AAA × Fail

Any Text WCAG AAA × Fail

# Black Background



## Color Contrast Check

Large Text (above 18pt) WCAG AA ✓ Pass

Any Text WCAG AA ✓ Pass

Large Text (above 18pt) WCAG AAA ✓ Pass

Any Text WCAG AAA × Fail

If you want to check with other color combinations, try the [Color Contrast Checker](#).



## Hex FD4F87 Background



This preview shows how black text looks on a background with the Hex color FD4F87.



This preview shows how white text looks on a background with the Hex color FD4F87.

# Color Blindness Simulation

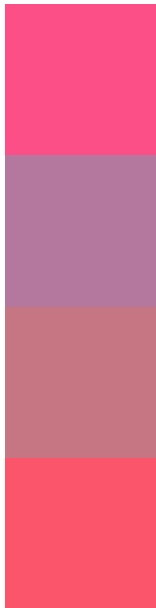
Color vision deficiency is a very complex topic, and I could not describe the different causes any better than Wikipedia does, so if you want to learn more, you should check out their [article about color blindness](#).

## Dichromacy





# Trichromacy



**Original Color**  
FD4F87

**Protanomaly**  
B4789F

**Deuteranomaly**  
C67682

**Tritanomaly**  
FB556C

# Monochromacy



**Original Color**  
FD4F87

**Achromatopsia**  
898989

**Achromatomaly**  
B37488

# CSS Examples

## Text

The CSS property to change the color of the text to Hex FD4F87 is called "color". The color property can be set on classes, ids or directly on the HTML element.

This example shows how text in the color #FD4F87 looks like.

```
.text, #text, p{  
    color:#FD4F87  
}
```

If you want to add a text shadow in that color use the text-shadow property, you can generate a text shadow directly with our [CSS Text Shadow Generator](#).

Here you see how black text with a 4 pixel #FD4F87 colored shadow looks like.

```
.shadow{ text-shadow: 4px 4px 2px #FD4F87
}
```

## Border

The CSS property to change the border of an element to Hex FD4F87 is called "border". The border property can be set on classes, ids or directly on the HTML element.

This example shows the color as border, it can be applied via the CSS property "border" or "border-color".

```
.border, #border, table{ border:4px solid
#FD4F87 }
```

If only the border color should be changed use the property `border-color`.

```
.border{ border-color:#FD4F87 }
```

If you want to add a box shadow in that color use:

Here you see how a box with a 4 pixel #FD4F87 colored shadow looks like.

```
.boxshadow{ -moz-box-shadow:4px 4px 4px  
4px #FD4F87; -webkit-box-shadow:4px 4px  
4px 4px #FD4F87; box-shadow:4px 4px 4px  
4px #FD4F87 }
```

# Background

The CSS property to change the background color of an element to Hex FD4F87 is called "background". The background property can be set on classes, ids or directly on the HTML element.

```
.background, #background, body{  
background:#FD4F87 }
```

If only the background color should be changed can be used:

```
.background{ background-color:#FD4F87 }
```

This example shows the color as background, it is applied via the CSS property "background".

To optimize and compress your CSS code, you can use our [online CSS compressor and optimizer](#) based on csstidy. If you want to create a linear or radial gradient as background or border, check our [CSS Gradient Generator](#).



Hey! You found this booklet interesting? Support Converting Colors with the new Membership Option!

The pro membership hides all ads, plus gives you double the colors in the color bucket, and more awesome pro features!

**[Learn more, Memberships starting at \\$2.50/m!](#)**

**Follow me  
on Twitter!**

@ConvertingColor