

Converting Colors

Hex(FD658D)

Have a look what the booklet for
Hex(FD658D) contains.

Hex(FD658D)	3
<i>Conversions</i>	4
<i>Details</i>	6
<i>Harmonies</i>	11
<i>Previews</i>	23
<i>Color Blindness Simulation</i>	26
<i>CSS Examples</i>	29

Color

Hex(FD658D)

Conversions

Conversions Part 1

Format	Color
Hex	FD658D
RGB	253, 101, 141
RGB Percent	99%, 40%, 55%
CMY	0.0078, 0.6039, 0.4471
CMYK	0.00, 0.60, 0.44, 0.01
HSL	344°, 97%, 69%
HSV	344°, 60%, 99%
XYZ	49.9694, 32.1131, 28.7641
YIQ	151.0080, 77.7520, 44.6640

Conversions

Conversions Part 2

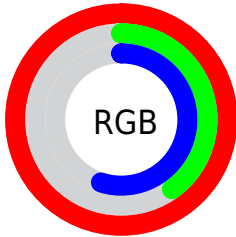
Format	Color
R _Y B	253, 101, 141
Decimal	16606605
CIE Lab	63.44, 61.15, 8.63
CIE LCh	63, 61.753, 8.033
Yxy	32.1131, 0.4508, 0.2897
Android (android.graphics.Color)	4294796685 (0xFFFD658D)
YUV	151.0080, -4.9339, 89.4470
Hunter-Lab	56.6684, 58.2291, 9.5731

Details

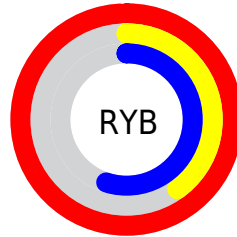
The Hex color **FD658D** is a light color, and the websafe version is hex **FF6699**. A complement of this color would be **65FDD5**, and the grayscale version is **979797**.

A 20% lighter version of the original color is **FF9EC2**, and **C0285B** is the 20% darker color. If you saturate the color by 10%, you get **FD4C7A**, and if you desaturate by 10%, it is **FD7EA0**.

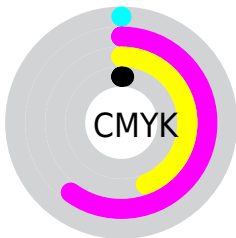
Distribution



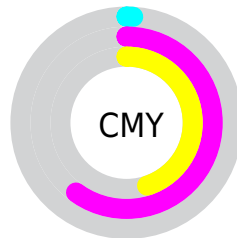
- Red (99%)
- Green (40%)
- Blue (55%)



- Red (99%)
- Yellow (40%)
- Blue (55%)



- Cyan (0%)
- Magenta (60%)
- Yellow (44%)
- Black (1%)



- Cyan (1%)
- Magenta (60%)
- Yellow (45%)

Brightness & Saturation Gradients

These gradients show how the Hex color FD658D changes by changing the brightness by 10 percent. The first figure shows a shift by +10% for each color and the second figure -10%.

Similar to the brightness gradients but the following saturation gradients show a change of the Hex color FD658D by changing the saturation by 10% instead.

 FD658D

 FD658D

FFFFFF

 DE4874

 FF9EC2

 C0285B

 FFBADE

 A10044

 FFD8FB

 84002E

 FFF5FF

 66001A

 4A0002

 2D0001

 000000

 FD658D

 FD658D

 FD4C7A

 FD7EA0

 FD3268

 FD98B2

 FD1955

 FDB1C5

 FD0043

 FDCAD8

 FDE3EA

 FDFDFD

 FDFFFF

Harmonies

Analogous

The Analogous color harmony consists of three colors that are next to each other on the color wheel.



E76EC4



FD658D



F57259

Triad

The Triadic color harmony groups three colors that are evenly spaced from another and form a triangle on the color wheel.



FD658D



6DA93C



00AFFF

Complementary

The Complementary color scheme is a pair of colors which are on the opposite of each other on the color wheel.



FD658D



65FDD5

Split Complementary

Split-complementary colors differ from the complementary color scheme. The scheme consists of three colors, the original color and two neighbors of the complement color.



00B2DC



FD658D



00B16E

Square

The Square scheme is like the rectangle color scheme, but the four colors are evenly spaced on the color wheel.



FD658D



A89C1E



00B4A7



3C9BFF

Rectangle

The Rectangle color scheme consists of four colors that form a rectangle on the color wheel.



FD658D



E3803B



00B4A7



00AEF6

Sweetspot

The Sweet Spot groups the original color and five complimentary colors.



FD658D



FFD1DD



D465FD



80636B



000000



808080

Same Dimension

The Same Dimension uses a secret algorithm to generate beautiful new colors.



FD658D



FF4778



FD8865



807376



BF0032



400011

Inverse Universe

The Inverse Universe completely reimagines the original color for something new.



FD658D



FF4778



65DAFD



807376



BF0032



400011

Previews

White Background



This preview shows how the Hex color FD658D looks on a white background.

Color Contrast Check

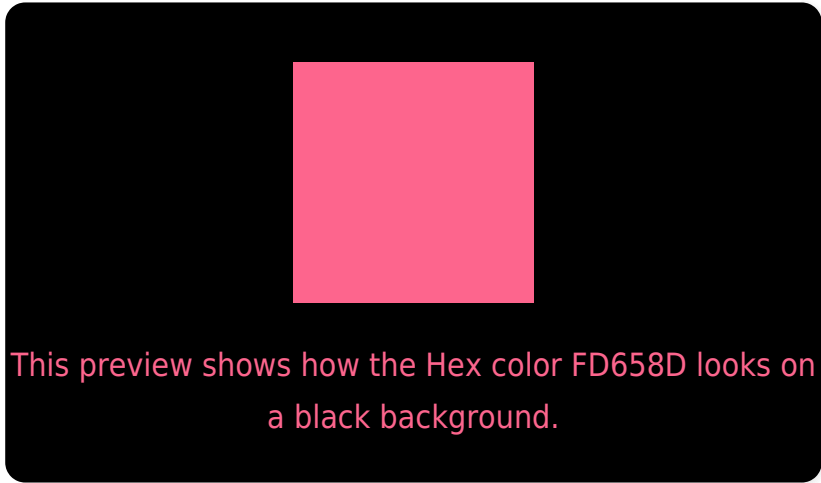
Large Text (above 18pt) WCAG AA × Fail

Any Text WCAG AA × Fail

Large Text (above 18pt) WCAG AAA × Fail

Any Text WCAG AAA × Fail

Black Background



Color Contrast Check

Large Text (above 18pt) WCAG AA ✓ Pass

Any Text WCAG AA ✓ Pass

Large Text (above 18pt) WCAG AAA ✓ Pass

Any Text WCAG AAA ✓ Pass

If you want to check with other color combinations, try the [Color Contrast Checker](#).

Hex FD658D Background



This preview shows how black text looks on a background with the Hex color FD658D.

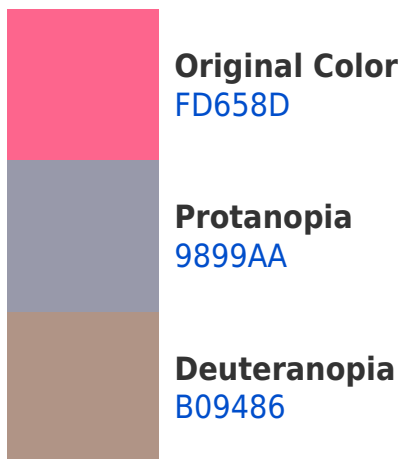


This preview shows how white text looks on a background with the Hex color FD658D.

Color Blindness Simulation

Color vision deficiency is a very complex topic, and I could not describe the different causes any better than Wikipedia does, so if you want to learn more, you should check out their [article about color blindness](#).

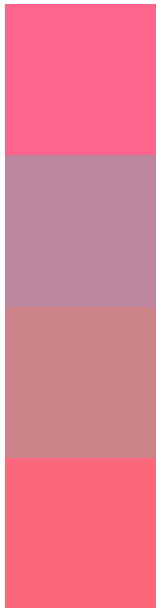
Dichromacy





Tritanopia
FB6A71

Trichromacy



Original Color
FD658D

Protanomaly
BD869F

Deuteranomaly
CC8389

Tritanomaly
FC687B

Monochromacy



Original Color
FD658D

Achromatopsia
979797

Achromatomaly
BC8593

CSS Examples

Text

The CSS property to change the color of the text to Hex FD658D is called "color". The color property can be set on classes, ids or directly on the HTML element.

This example shows how text in the color #FD658D looks like.

```
.text, #text, p{  
    color:#FD658D  
}
```

If you want to add a text shadow in that color use the text-shadow property, you can generate a text shadow directly with our [CSS Text Shadow Generator](#).

Here you see how black text with a 4 pixel #FD658D colored shadow looks like.

```
.shadow{ text-shadow: 4px 4px 2px #FD658D
}
```

Border

The CSS property to change the border of an element to Hex FD658D is called "border". The border property can be set on classes, ids or directly on the HTML element.

This example shows the color as border, it can be applied via the CSS property "border" or "border-color".

```
.border, #border, table{ border:4px solid
#FD658D }
```

If only the border color should be changed use the property `border-color`.

```
.border{ border-color:#FD658D }
```

If you want to add a box shadow in that color use:

Here you see how a box with a 4 pixel #FD658D colored shadow looks like.

```
.boxshadow{ -moz-box-shadow:4px 4px 4px  
4px #FD658D; -webkit-box-shadow:4px 4px  
4px 4px #FD658D; box-shadow:4px 4px 4px  
4px #FD658D }
```

Background

The CSS property to change the background color of an element to Hex FD658D is called "background". The background property can be set on classes, ids or directly on the HTML element.

```
.background, #background, body{  
background:#FD658D }
```

If only the background color should be changed can be used:

```
.background{ background-color:#FD658D }
```

This example shows the color as background, it is applied via the CSS property "background".

To optimize and compress your CSS code, you can use our [online CSS compressor and optimizer](#) based on csstidy. If you want to create a linear or radial gradient as background or border, check our [CSS Gradient Generator](#).

Hey! You found this booklet interesting? Support Converting Colors with the new Membership Option!

The pro membership hides all ads, plus gives you double the colors in the color bucket, and more awesome pro features!

[Learn more, Memberships starting at \\$2.50/m!](#)

**Follow me
on Twitter!**

@ConvertingColor