

Converting Colors

Hex(FD8360)

Have a look what the booklet for
Hex(FD8360) contains.

Hex(FD8360)	3
<i>Conversions</i>	4
<i>Details</i>	6
<i>Harmonies</i>	11
<i>Previews</i>	23
<i>Color Blindness Simulation</i>	26
<i>CSS Examples</i>	29

Color

Hex(FD8360)

Conversions

Conversions Part 1

Format	Color
Hex	FD8360
RGB	253, 131, 96
RGB Percent	99%, 51%, 38%
CMY	0.0078, 0.4863, 0.6235
CMYK	0.00, 0.48, 0.62, 0.01
HSL	13°, 98%, 68%
HSV	13°, 62%, 99%
XYZ	50.7356, 37.9598, 15.7192
YIQ	163.4880, 83.9470, 14.9790

Conversions

Conversions Part 2

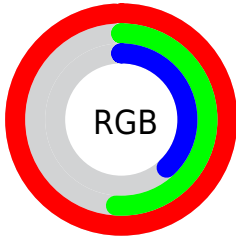
Format	Color
R _Y B	253, 141, 96
Decimal	16614240
CIE Lab	67.99, 43.57, 39.89
CIE LCh	68, 59.072, 42.479
Yxy	37.9598, 0.4859, 0.3635
Android (android.graphics.Color)	4294804320 (0xFFFD8360)
YUV	163.4880, -33.2716, 78.5020
Hunter-Lab	61.6115, 39.1704, 28.0011

Details

The Hex color **FD8360** is a light color, and the websafe version is hex **FF9966**. A complement of this color would be **60DAFD**, and the grayscale version is **A4A4A4**.

A 20% lighter version of the original color is **FFBA93**, and **BF4E30** is the 20% darker color. If you saturate the color by 10%, you get **FD6F47**, and if you desaturate by 10%, it is **FD9779**.

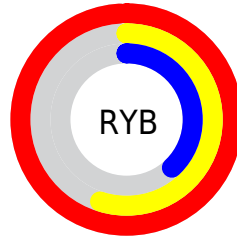
Distribution



Red (99%)

Green (51%)

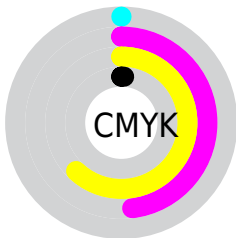
Blue (38%)



Red (99%)

Yellow (55%)

Blue (38%)

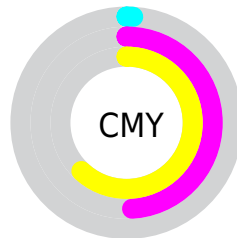


Cyan (0%)

Magenta (48%)

Yellow (62%)

Black (1%)



Cyan (1%)

Magenta (49%)

Yellow (62%)

Brightness & Saturation Gradients

These gradients show how the Hex color FD8360 changes by changing the brightness by 10 percent. The first figure shows a shift by +10% for each color and the second figure -10%.

Similar to the brightness gradients but the following saturation gradients show a change of the Hex color FD8360 by changing the saturation by 10% instead.

 FD8360

 FD8360

FFFFFF

 DE6848

 FFBA93

 BF4E30

 FFD6AE

 A13419

 FFF3CA

 831801

 FFFFE6

 650000

 480000

 2E0002

 000000

 FD8360

 FD8360

FD6F47

FD9779

FD5C2D

FDAA93

FD4814

FDBEAC

FD3800

FDD2C5

FDE5DF

FDF9F8

FDFFFF

Harmonies

Analogous

The Analogous color harmony consists of three colors that are next to each other on the color wheel.



FF7691



FD8360



DD983C

Triad

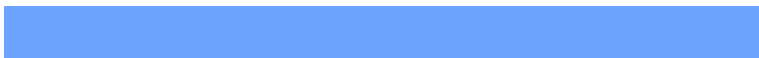
The Triadic color harmony groups three colors that are evenly spaced from another and form a triangle on the color wheel.



FD8360



00BE84



6CA4FF

Complementary

The Complementary color scheme is a pair of colors which are on the opposite of each other on the color wheel.



FD8360



60DAFD

Split Complementary

Split-complementary colors differ from the complementary color scheme. The scheme consists of three colors, the original color and two neighbors of the complement color.



00B4FF



FD8360



00C0BB

Square

The Square scheme is like the rectangle color scheme, but the four colors are evenly spaced on the color wheel.



FD8360



72B753



00BDEC



C68EF5

Rectangle

The Rectangle color scheme consists of four colors that form a rectangle on the color wheel.



FD8360



BFA433



00BDEC



35AAFF

Sweetspot

The Sweet Spot groups the original color and five complimentary colors.



FD8360



FFD9CF



FD60DB



806962



000000



808080

Same Dimension

The Same Dimension uses a secret algorithm to generate beautiful new colors.



FD8360



FF6C42



FDD160



807673



BF2B00



400E00

Inverse Universe

The Inverse Universe completely reimagines the original color for something new.



60DAFD



42D5FF



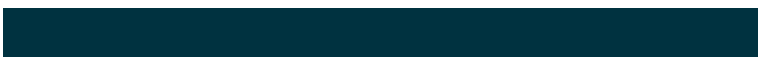
608CFD



737D80



0095BF



003240

Previews

White Background



This preview shows how the Hex color FD8360 looks on a white background.

Color Contrast Check

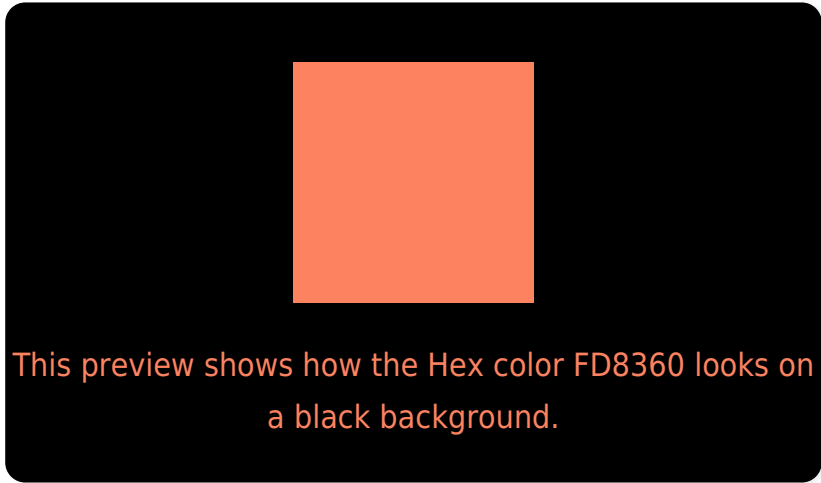
Large Text (above 18pt) WCAG AA × Fail

Any Text WCAG AA × Fail

Large Text (above 18pt) WCAG AAA × Fail

Any Text WCAG AAA × Fail

Black Background



Color Contrast Check

Large Text (above 18pt) WCAG AA ✓ Pass

Any Text WCAG AA ✓ Pass

Large Text (above 18pt) WCAG AAA ✓ Pass

Any Text WCAG AAA ✓ Pass

If you want to check with other color combinations, try the [Color Contrast Checker](#).

Hex FD8360 Background



This preview shows how black text looks on a background with the Hex color FD8360.

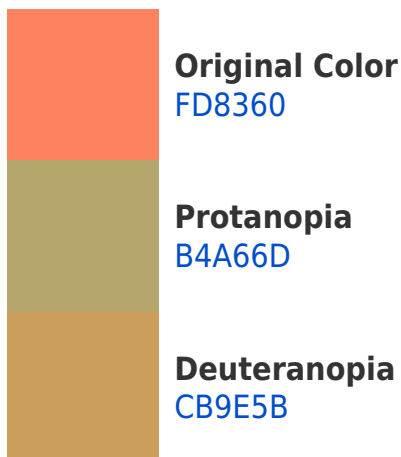


This preview shows how white text looks on a background with the Hex color FD8360.

Color Blindness Simulation

Color vision deficiency is a very complex topic, and I could not describe the different causes any better than Wikipedia does, so if you want to learn more, you should check out their [article about color blindness](#).

Dichromacy



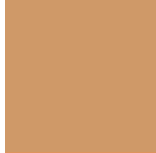


Tritanopia
FF7E87

Trichromacy



Original Color
FD8360



Protanomaly
CF9968



Deuteranomaly
DD945D



Tritanomaly
FE8079

Monochromacy



Original Color
FD8360



Achromatopsia
A3A3A3



Achromatomaly
C4978B

CSS Examples

Text

The CSS property to change the color of the text to Hex FD8360 is called "color". The color property can be set on classes, ids or directly on the HTML element.

This example shows how text in the color #FD8360 looks like.

```
.text, #text, p{  
    color:#FD8360  
}
```

If you want to add a text shadow in that color use the text-shadow property, you can generate a text shadow directly with our [CSS Text Shadow Generator](#).

Here you see how black text with a 4 pixel #FD8360 colored shadow looks like.

```
.shadow{ text-shadow: 4px 4px 2px #FD8360
}
```

Border

The CSS property to change the border of an element to Hex FD8360 is called "border". The border property can be set on classes, ids or directly on the HTML element.

This example shows the color as border, it can be applied via the CSS property "border" or "border-color".

```
.border, #border, table{ border:4px solid
#FD8360 }
```

If only the border color should be changed use the property `border-color`.

```
.border{ border-color:#FD8360 }
```

If you want to add a box shadow in that color use:

Here you see how a box with a 4 pixel #FD8360 colored shadow looks like.

```
.boxshadow{ -moz-box-shadow:4px 4px 4px  
4px #FD8360; -webkit-box-shadow:4px 4px  
4px 4px #FD8360; box-shadow:4px 4px 4px  
4px #FD8360 }
```

Background

The CSS property to change the background color of an element to Hex FD8360 is called "background". The background property can be set on classes, ids or directly on the HTML element.

```
.background, #background, body{  
background:#FD8360 }
```

If only the background color should be changed can be used:

```
.background{ background-color:#FD8360 }
```

This example shows the color as background, it is applied via the CSS property "background".

To optimize and compress your CSS code, you can use our [online CSS compressor and optimizer](#) based on csstidy. If you want to create a linear or radial gradient as background or border, check our [CSS Gradient Generator](#).

Hey! You found this booklet interesting? Support Converting Colors with the new Membership Option!

The pro membership hides all ads, plus gives you double the colors in the color bucket, and more awesome pro features!

[Learn more, Memberships starting at \\$2.50/m!](#)

**Follow me
on Twitter!**

@ConvertingColor