

Converting Colors

Hex(FD897D)

Have a look what the booklet for
Hex(FD897D) contains.

Hex(FD897D)	3
<i>Conversions</i>	4
<i>Details</i>	6
<i>Harmonies</i>	11
<i>Previews</i>	23
<i>Color Blindness Simulation</i>	26
<i>CSS Examples</i>	29

Color

Hex(FD897D)

Conversions

Conversions Part 1

Format	Color
Hex	FD897D
RGB	253, 137, 125
RGB Percent	99%, 54%, 49%
CMY	0.0078, 0.4627, 0.5098
CMYK	0.00, 0.46, 0.51, 0.01
HSL	6°, 97%, 74%
HSV	6°, 51%, 99%
XYZ	53.1553, 40.2546, 24.3704
YIQ	170.3160, 72.9880, 20.8600

Conversions

Conversions Part 2

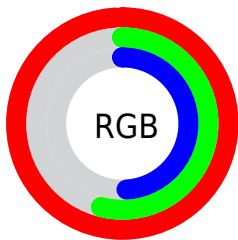
Format	Color
R_{YB}	253, 138, 125
Decimal	16615805
CIE _{Lab}	69.65, 42.76, 26.24
CIE _{LCh}	70, 50.172, 31.536
Yxy	40.2546, 0.4513, 0.3418
Android (android.graphics.Color)	4294805885 (0xFFFD897D)
YUV	170.3160, -22.3408, 72.5139
Hunter-Lab	63.4465, 38.5154, 21.6388

Details

The Hex color **FD897D** is a light color, and the websafe version is hex **FF9999**. A complement of this color would be **7DF1FD**, and the grayscale version is **AAAAAA**.

A 20% lighter version of the original color is **FFC0B2**, and **C0544C** is the 20% darker color. If you saturate the color by 10%, you get **FD7264**, and if you desaturate by 10%, it is **FDA096**.

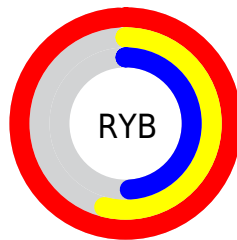
Distribution



Red (99%)

Green (54%)

Blue (49%)



Red (99%)

Yellow (54%)

Blue (49%)

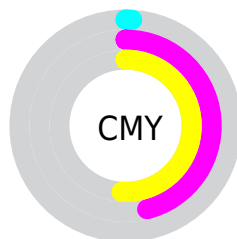


Cyan (0%)

Magenta (46%)

Yellow (51%)

Black (1%)



Cyan (1%)

Magenta (46%)

Yellow (51%)

Brightness & Saturation Gradients

These gradients show how the Hex color FD897D changes by changing the brightness by 10 percent. The first figure shows a shift by +10% for each color and the second figure -10%.

Similar to the brightness gradients but the following saturation gradients show a change of the Hex color FD897D by changing the saturation by 10% instead.

 FD897D

 FD897D

FFFFFF

 DE6E64

 FFC0B2

 C0544C

 FFDDCD

 A23A35

 FFFAE9

 851F20

 68000A

 4C0000

 330002

 000000

 FD897D

 FD897D

■ FD7264

■ FDA096

■ FD5B4A

■ FDB7B0

■ FD4431

■ FDCEC9

■ FD2D18

■ FDE5E2

■ FD1800

■ FDFCFC

FDFFFF

Harmonies

Analogous

The Analogous color harmony consists of three colors that are next to each other on the color wheel.



FD84AA



FD897D



E7985A

Triad

The Triadic color harmony groups three colors that are evenly spaced from another and form a triangle on the color wheel.



FD897D



59BE7D



5DAEFF

Complementary

The Complementary color scheme is a pair of colors which are on the opposite of each other on the color wheel.



FD897D



7DF1FD

Split Complementary

Split-complementary colors differ from the complementary color scheme. The scheme consists of three colors, the original color and two neighbors of the complement color.



00BAF9



FD897D



00C1AB

Square

The Square scheme is like the rectangle color scheme, but the four colors are evenly spaced on the color wheel.



FD897D



94B55A



00C0D8



B09DF8

Rectangle

The Rectangle color scheme consists of four colors that form a rectangle on the color wheel.



FD897D



D0A34E



00C0D8



2EB3FF

Sweetspot

The Sweet Spot groups the original color and five complimentary colors.



FD897D



FFDCD9



FD7DF2



806B69



000000



808080

Same Dimension

The Same Dimension uses a secret algorithm to generate beautiful new colors.



FD897D



FF7263



FDC87D



807473



BF1200



400600

Inverse Universe

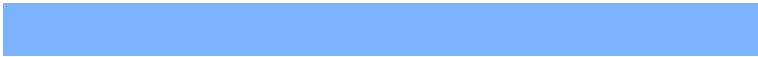
The Inverse Universe completely reimagines the original color for something new.



7DF1FD



63F0FF



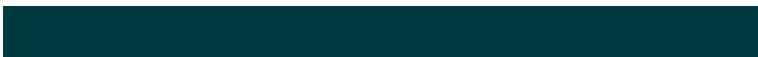
7DB2FD



737E80



00ADBF



003A40

Previews

White Background



This preview shows how the Hex color FD897D looks on a white background.

Color Contrast Check

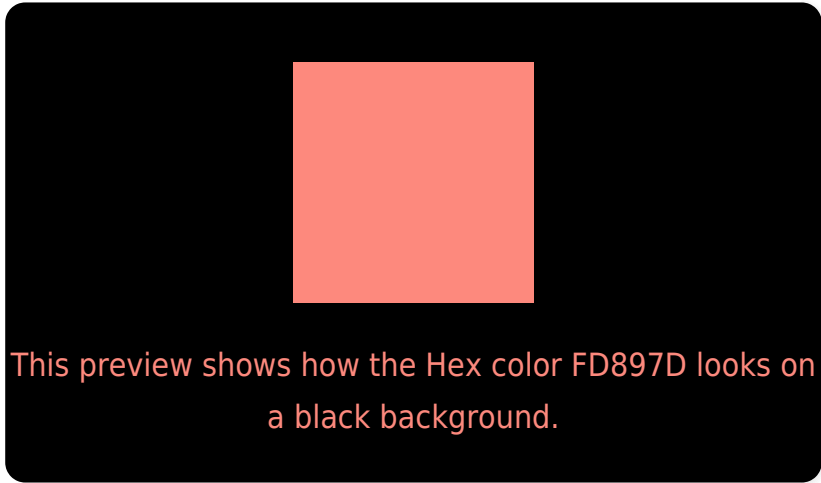
Large Text (above 18pt) WCAG AA × Fail

Any Text WCAG AA × Fail

Large Text (above 18pt) WCAG AAA × Fail

Any Text WCAG AAA × Fail

Black Background



Color Contrast Check

Large Text (above 18pt) WCAG AA ✓ Pass

Any Text WCAG AA ✓ Pass

Large Text (above 18pt) WCAG AAA ✓ Pass

Any Text WCAG AAA ✓ Pass

If you want to check with other color combinations, try the [Color Contrast Checker](#).

Hex FD897D Background



This preview shows how black text looks on a background with the Hex color FD897D.

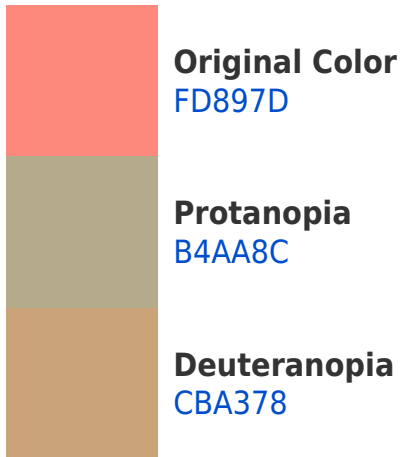


This preview shows how white text looks on a background with the Hex color FD897D.

Color Blindness Simulation

Color vision deficiency is a very complex topic, and I could not describe the different causes any better than Wikipedia does, so if you want to learn more, you should check out their [article about color blindness](#).

Dichromacy



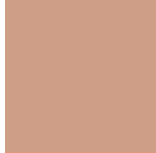


Tritanopia
FE8690

Trichromacy



Original Color
FD897D



Protanomaly
CF9E87



Deuteranomaly
DD9A7A

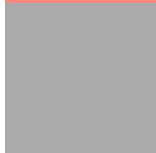


Tritanomaly
FE8789

Monochromacy



Original Color
FD897D



Achromatopsia
AAAAAA



Achromatomaly
C89E9A

CSS Examples

Text

The CSS property to change the color of the text to Hex FD897D is called "color". The color property can be set on classes, ids or directly on the HTML element.

This example shows how text in the color #FD897D looks like.

```
.text, #text, p{  
    color:#FD897D  
}
```

If you want to add a text shadow in that color use the text-shadow property, you can generate a text shadow directly with our [CSS Text Shadow Generator](#).

Here you see how black text with a 4 pixel #FD897D colored shadow looks like.

```
.shadow{ text-shadow: 4px 4px 2px #FD897D
}
```

Border

The CSS property to change the border of an element to Hex FD897D is called "border". The border property can be set on classes, ids or directly on the HTML element.

This example shows the color as border, it can be applied via the CSS property "border" or "border-color".

```
.border, #border, table{ border:4px solid
#FD897D }
```

If only the border color should be changed use the property border-color.

```
.border{ border-color:#FD897D }
```

If you want to add a box shadow in that color use:

Here you see how a box with a 4 pixel #FD897D colored shadow looks like.

```
.boxshadow{ -moz-box-shadow:4px 4px 4px  
4px #FD897D; -webkit-box-shadow:4px 4px  
4px 4px #FD897D; box-shadow:4px 4px 4px  
4px #FD897D }
```

Background

The CSS property to change the background color of an element to Hex FD897D is called "background". The background property can be set on classes, ids or directly on the HTML element.

```
.background, #background, body{  
background:#FD897D }
```

If only the background color should be changed can be used:

```
.background{ background-color:#FD897D }
```

This example shows the color as background, it is applied via the CSS property "background".

To optimize and compress your CSS code, you can use our [online CSS compressor and optimizer](#) based on csstidy. If you want to create a linear or radial gradient as background or border, check our [CSS Gradient Generator](#).

Hey! You found this booklet interesting? Support Converting Colors with the new Membership Option!

The pro membership hides all ads, plus gives you double the colors in the color bucket, and more awesome pro features!

[Learn more, Memberships starting at \\$2.50/m!](#)

**Follow me
on Twitter!**

@ConvertingColor