

Converting Colors

Hex(FD8A64)

Have a look what the booklet for
Hex(FD8A64) contains.

Hex(FD8A64)	3
<i>Conversions</i>	4
<i>Details</i>	6
<i>Harmonies</i>	11
<i>Previews</i>	23
<i>Color Blindness Simulation</i>	26
<i>CSS Examples</i>	29

Color

Hex(FD8A64)

Conversions

Conversions Part 1

Format	Color
Hex	FD8A64
RGB	253, 138, 100
RGB Percent	99%, 54%, 39%
CMY	0.0078, 0.4588, 0.6078
CMYK	0.00, 0.45, 0.60, 0.01
HSL	15°, 97%, 69%
HSV	15°, 60%, 99%
XYZ	51.8967, 39.9797, 17.0382
YIQ	168.0530, 80.7380, 12.5620

Conversions

Conversions Part 2

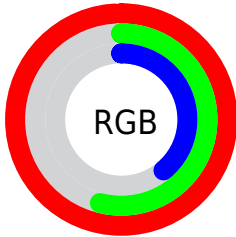
Format	Color
R _Y B	253, 151, 100
Decimal	16616036
CIE Lab	69.46, 40.33, 39.56
CIE LCh	69, 56.492, 44.451
Yxy	39.9797, 0.4765, 0.3671
Android (android.graphics.Color)	4294806116 (0xFFFD8A64)
YUV	168.0530, -33.5501, 74.4985
Hunter-Lab	63.2295, 35.8554, 28.2840

Details

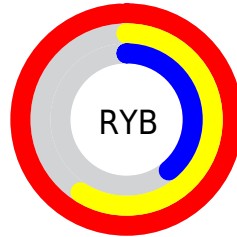
The Hex color **FD8A64** is a light color, and the websafe version is hex **FF9966**. A complement of this color would be **64D7FD**, and the grayscale version is **A8A8A8**.

A 20% lighter version of the original color is **FFC198**, and **BF5634** is the 20% darker color. If you saturate the color by 10%, you get **FD774B**, and if you desaturate by 10%, it is **FD9D7D**.

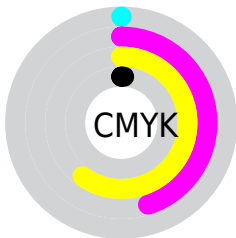
Distribution



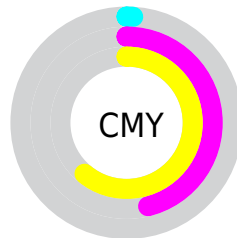
- Red (99%)
- Green (54%)
- Blue (39%)



- Red (99%)
- Yellow (59%)
- Blue (39%)



- Cyan (0%)
- Magenta (45%)
- Yellow (60%)
- Black (1%)



- Cyan (1%)
- Magenta (46%)
- Yellow (61%)

Brightness & Saturation Gradients

These gradients show how the Hex color FD8A64 changes by changing the brightness by 10 percent. The first figure shows a shift by +10% for each color and the second figure -10%.

Similar to the brightness gradients but the following saturation gradients show a change of the Hex color FD8A64 by changing the saturation by 10% instead.

 FD8A64

 FD8A64

FFFFFF

 DE704B

 FFC198

 BF5634

 FFDDDB3

 A13C1D

 FFFACE

 832205

 FFFFEB

 660200

 490000

 310002

 000000

 FD8A64

 FD8A64

 FD774B

 FD9D7D

 FD6431

 FDB097

 FD5118

 FDC3B0

 FD3F00

 FDD6C9

 FDE9E3

 FDFCFC

 FDFFFF

Harmonies

Analogous

The Analogous color harmony consists of three colors that are next to each other on the color wheel.



FF7D93



FD8A64



DD9D44

Triad

The Triadic color harmony groups three colors that are evenly spaced from another and form a triangle on the color wheel.



FD8A64



00C18C



7DA7FF

Complementary

The Complementary color scheme is a pair of colors which are on the opposite of each other on the color wheel.



FD8A64



64D7FD

Split Complementary

Split-complementary colors differ from the complementary color scheme. The scheme consists of three colors, the original color and two neighbors of the complement color.



00B7FF



FD8A64



00C3C2

Square

The Square scheme is like the rectangle color scheme, but the four colors are evenly spaced on the color wheel.



FD8A64



75BB5D



00C0F0



CD92F3

Rectangle

The Rectangle color scheme consists of four colors that form a rectangle on the color wheel.



FD8A64



BFA93D



00C0F0



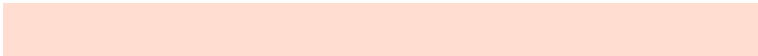
54ADFF

Sweetspot

The Sweet Spot groups the original color and five complimentary colors.



FD8A64



FFDDD1



FD64D9



806A63



000000



808080

Same Dimension

The Same Dimension uses a secret algorithm to generate beautiful new colors.



FD8A64



FF7345



FDD464



807673



BF2F00



401000

Inverse Universe

The Inverse Universe completely reimagines the original color for something new.



64D7FD



45D1FF



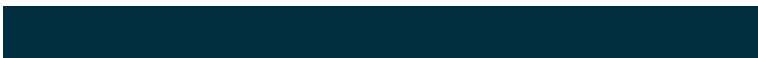
648DFD



737C80



0090BF



003040

Previews

White Background



This preview shows how the Hex color FD8A64 looks on a white background.

Color Contrast Check

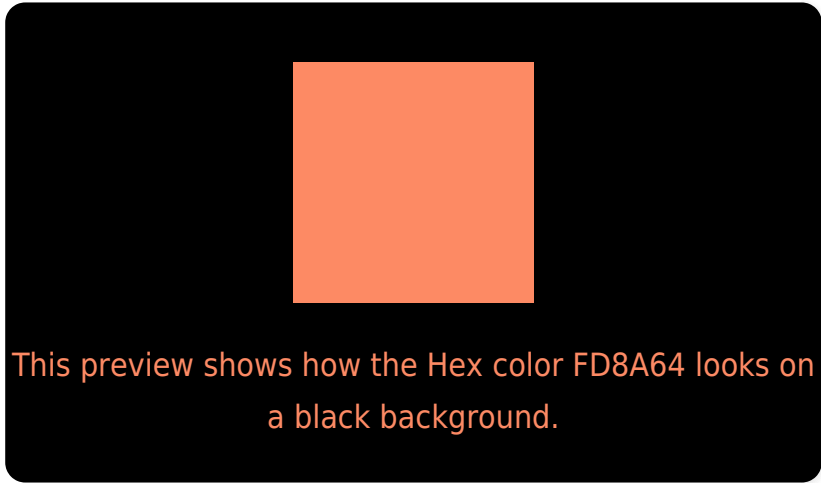
Large Text (above 18pt) WCAG AA × Fail

Any Text WCAG AA × Fail

Large Text (above 18pt) WCAG AAA × Fail

Any Text WCAG AAA × Fail

Black Background



Color Contrast Check

Large Text (above 18pt) WCAG AA ✓ Pass

Any Text WCAG AA ✓ Pass

Large Text (above 18pt) WCAG AAA ✓ Pass

Any Text WCAG AAA ✓ Pass

If you want to check with other color combinations, try the [Color Contrast Checker](#).

Hex FD8A64 Background



This preview shows how black text looks on a background with the Hex color FD8A64.

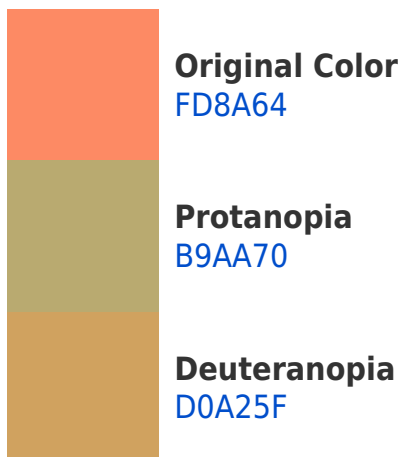


This preview shows how white text looks on a background with the Hex color FD8A64.

Color Blindness Simulation

Color vision deficiency is a very complex topic, and I could not describe the different causes any better than Wikipedia does, so if you want to learn more, you should check out their [article about color blindness](#).

Dichromacy





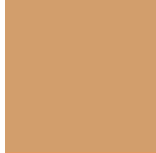
Tritanopia
FF858E

Trichromacy



Original Color

FD8A64



Protanomaly

D29E6C



Deuteranomaly

E09961



Tritanomaly

FE877F

Monochromacy



Original Color

FD8A64



Achromatopsia

A8A8A8



Achromatomaly

C79D8F

CSS Examples

Text

The CSS property to change the color of the text to Hex FD8A64 is called "color". The color property can be set on classes, ids or directly on the HTML element.

This example shows how text in the color #FD8A64 looks like.

```
.text, #text, p{  
    color:#FD8A64  
}
```

If you want to add a text shadow in that color use the text-shadow property, you can generate a text shadow directly with our [CSS Text Shadow Generator](#).

Here you see how black text with a 4 pixel #FD8A64 colored shadow looks like.

```
.shadow{ text-shadow: 4px 4px 2px #FD8A64
}
```

Border

The CSS property to change the border of an element to Hex FD8A64 is called "border". The border property can be set on classes, ids or directly on the HTML element.

This example shows the color as border, it can be applied via the CSS property "border" or "border-color".

```
.border, #border, table{ border:4px solid
#FD8A64 }
```

If only the border color should be changed use the property `border-color`.

```
.border{ border-color:#FD8A64 }
```

If you want to add a box shadow in that color use:

Here you see how a box with a 4 pixel #FD8A64 colored shadow looks like.

```
.boxshadow{ -moz-box-shadow:4px 4px 4px  
4px #FD8A64; -webkit-box-shadow:4px 4px  
4px 4px #FD8A64; box-shadow:4px 4px 4px  
4px #FD8A64 }
```

Background

The CSS property to change the background color of an element to Hex FD8A64 is called "background". The background property can be set on classes, ids or directly on the HTML element.

```
.background, #background, body{  
background:#FD8A64 }
```

If only the background color should be changed can be used:

```
.background{ background-color:#FD8A64 }
```

This example shows the color as background, it is applied via the CSS property "background".

To optimize and compress your CSS code, you can use our [online CSS compressor and optimizer](#) based on csstidy. If you want to create a linear or radial gradient as background or border, check our [CSS Gradient Generator](#).

Hey! You found this booklet interesting? Support Converting Colors with the new Membership Option!

The pro membership hides all ads, plus gives you double the colors in the color bucket, and more awesome pro features!

[Learn more, Memberships starting at \\$2.50/m!](#)

**Follow me
on Twitter!**

@ConvertingColor