

Converting Colors

Hex(FDB39C)

Have a look what the booklet for
Hex(FDB39C) contains.

Hex(FDB39C)	3
<i>Conversions</i>	4
<i>Details</i>	6
<i>Harmonies</i>	11
<i>Previews</i>	23
<i>Color Blindness Simulation</i>	26
<i>CSS Examples</i>	29

Color

Hex(FDB39C)

Conversions

Conversions Part 1

Format	Color
Hex	FDB39C
RGB	253, 179, 156
RGB Percent	99%, 70%, 61%
CMY	0.0078, 0.2980, 0.3882
CMYK	0.00, 0.29, 0.38, 0.01
HSL	14°, 96%, 80%
HSV	14°, 38%, 99%
XYZ	62.6289, 55.5231, 38.8686
YIQ	198.5040, 51.4870, 8.5350

Conversions

Conversions Part 2

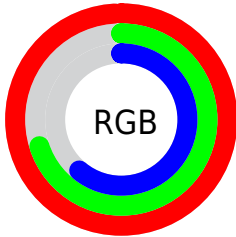
Format	Color
R _Y B	253, 186, 156
Decimal	16626588
CIE Lab	79.34, 24.14, 22.51
CIE LCh	79, 33.002, 42.997
Yxy	55.5231, 0.3989, 0.3536
Android (android.graphics.Color)	4294816668 (0xFFFD B39C)
YUV	198.5040, -20.9545, 47.7930
Hunter-Lab	74.5139, 19.6299, 21.2323

Details

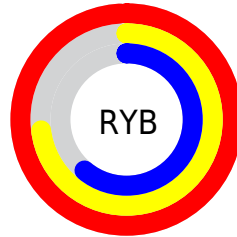
The Hex color **FDB39C** is a light color, and the websafe version is hex **FF9999**. A complement of this color would be **9CE6FD**, and the grayscale version is **C7C7C7**.

A 20% lighter version of the original color is **FFEBD3**, and **C27E69** is the 20% darker color. If you saturate the color by 10%, you get **FDA083**, and if you desaturate by 10%, it is **FDC6B5**.

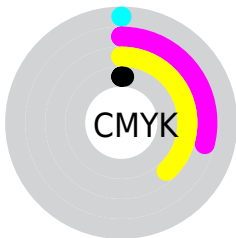
Distribution



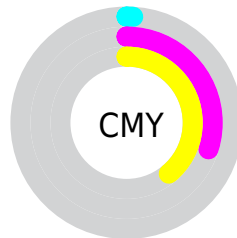
- Red (99%)
- Green (70%)
- Blue (61%)



- Red (99%)
- Yellow (73%)
- Blue (61%)



- Cyan (0%)
- Magenta (29%)
- Yellow (38%)
- Black (1%)



- Cyan (1%)
- Magenta (30%)
- Yellow (39%)

Brightness & Saturation Gradients

These gradients show how the Hex color FDB39C changes by changing the brightness by 10 percent. The first figure shows a shift by +10% for each color and the second figure -10%.

Similar to the brightness gradients but the following saturation gradients show a change of the Hex color FDB39C by changing the saturation by 10% instead.

 FDB39C

 FDB39C

FFFFFF

 DF9882

 FFEBD3

 C27E69

 FFFFEF

 A66450

 8A4C39

 6E3523

 541E0E

 3A0700

 230001

 000000

 FDB39C

 FDB39C

 FDA083

 FDC6B5

 FD8C69

 FDDACF

 FD7950

 FDEDE8

 FD6637

 FDFFFF

 FD521E

 FD3F04

 FD3C00

Harmonies

Analogous

The Analogous color harmony consists of three colors that are next to each other on the color wheel.



FFAEB8



FDB39C



EABD8A

Triad

The Triadic color harmony groups three colors that are evenly spaced from another and form a triangle on the color wheel.



FDB39C



87D4B2



B0C3FF

Complementary

The Complementary color scheme is a pair of colors which are on the opposite of each other on the color wheel.



FDB39C



9CE6FD

Split Complementary

Split-complementary colors differ from the complementary color scheme. The scheme consists of three colors, the original color and two neighbors of the complement color.



83CDFF



FDB39C



69D6D1

Square

The Square scheme is like the rectangle color scheme, but the four colors are evenly spaced on the color wheel.



FDB39C



AACF97



65D3ED



DAB8F2

Rectangle

The Rectangle color scheme consists of four colors that form a rectangle on the color wheel.



FDB39C



D7C487



65D3ED



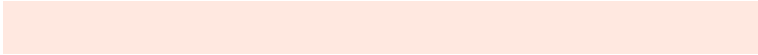
A1C6FF

Sweetspot

The Sweet Spot groups the original color and five complimentary colors.



FDB39C



FFE8E0



FD9CE6



80726E



000000



808080

Same Dimension

The Same Dimension uses a secret algorithm to generate beautiful new colors.



FDB39C



FFA68A



FDE39C



807673



BF2D00



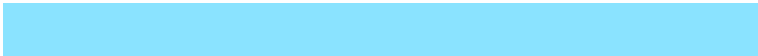
400F00

Inverse Universe

The Inverse Universe completely reimagines the original color for something new.



9CE6FD



8AE3FF



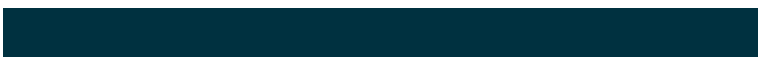
9CB6FD



737C80



0092BF



003140

Previews

White Background



This preview shows how the Hex color FDB39C looks on a white background.

Color Contrast Check

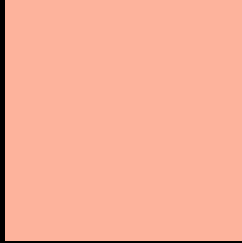
Large Text (above 18pt) WCAG AA × Fail

Any Text WCAG AA × Fail

Large Text (above 18pt) WCAG AAA × Fail

Any Text WCAG AAA × Fail

Black Background



This preview shows how the Hex color FDB39C looks on a black background.

Color Contrast Check

Large Text (above 18pt) WCAG AA ✓ Pass

Any Text WCAG AA ✓ Pass

Large Text (above 18pt) WCAG AAA ✓ Pass

Any Text WCAG AAA ✓ Pass

If you want to check with other color combinations, try the [Color Contrast Checker](#).

Hex FDB39C Background



This preview shows how black text looks on a background with the Hex color FDB39C.

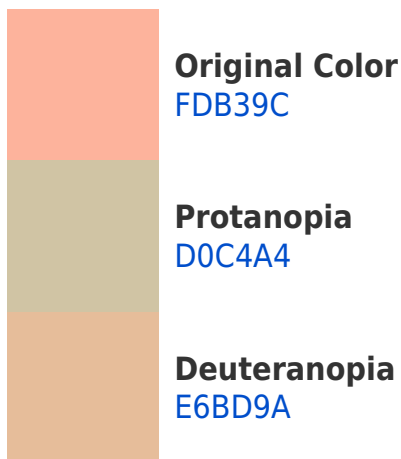


This preview shows how white text looks on a background with the Hex color FDB39C.

Color Blindness Simulation

Color vision deficiency is a very complex topic, and I could not describe the different causes any better than Wikipedia does, so if you want to learn more, you should check out their [article about color blindness](#).

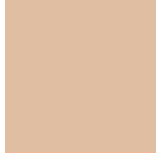
Dichromacy



Trichromacy



Original Color
FDB39C



Protanomaly
E0BEA1



Deuteranomaly
EEB99B

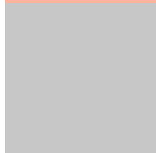


Tritanomaly
FEB0B0

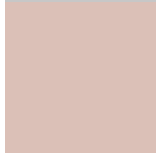
Monochromacy



Original Color
FDB39C



Achromatopsia
C7C7C7



Achromatomaly
DBC0B7

CSS Examples

Text

The CSS property to change the color of the text to Hex FDB39C is called "color". The color property can be set on classes, ids or directly on the HTML element.

This example shows how text in the color #FDB39C looks like.

```
.text, #text, p{  
    color:#FDB39C  
}
```

If you want to add a text shadow in that color use the text-shadow property, you can generate a text shadow directly with our [CSS Text Shadow Generator](#).

Here you see how black text with a 4 pixel #FDB39C colored shadow looks like.

```
.shadow{ text-shadow: 4px 4px 2px #FDB39C
}
```

Border

The CSS property to change the border of an element to Hex FDB39C is called "border". The border property can be set on classes, ids or directly on the HTML element.

This example shows the color as border, it can be applied via the CSS property "border" or "border-color".

```
.border, #border, table{ border:4px solid
#FDB39C }
```

If only the border color should be changed use the property `border-color`.

```
.border{ border-color:#FDB39C }
```

If you want to add a box shadow in that color use:

Here you see how a box with a 4 pixel #FDB39C colored shadow looks like.

```
.boxshadow{ -moz-box-shadow:4px 4px 4px  
4px #FDB39C; -webkit-box-shadow:4px 4px  
4px 4px #FDB39C; box-shadow:4px 4px 4px  
4px #FDB39C }
```

Background

The CSS property to change the background color of an element to Hex FDB39C is called "background". The background property can be set on classes, ids or directly on the HTML element.

```
.background, #background, body{  
background:#FDB39C }
```

If only the background color should be changed can be used:

```
.background{ background-color:#FDB39C }
```

This example shows the color as background, it is applied via the CSS property "background".

To optimize and compress your CSS code, you can use our [online CSS compressor and optimizer](#) based on csstidy. If you want to create a linear or radial gradient as background or border, check our [CSS Gradient Generator](#).

Hey! You found this booklet interesting? Support Converting Colors with the new Membership Option!

The pro membership hides all ads, plus gives you double the colors in the color bucket, and more awesome pro features!

[Learn more, Memberships starting at \\$2.50/m!](#)

**Follow me
on Twitter!**

@ConvertingColor