

Converting Colors

Hex(FDB9AB)

Have a look what the booklet for
Hex(FDB9AB) contains.

Hex(FDB9AB)	3
<i>Conversions</i>	4
<i>Details</i>	6
<i>Harmonies</i>	11
<i>Previews</i>	23
<i>Color Blindness Simulation</i>	26
<i>CSS Examples</i>	29

Color

Hex(FDB9AB)

Conversions

Conversions Part 1

Format	Color
Hex	FDB9AB
RGB	253, 185, 171
RGB Percent	99%, 73%, 67%
CMY	0.0078, 0.2745, 0.3294
CMYK	0.00, 0.27, 0.32, 0.01
HSL	10°, 95%, 83%
HSV	10°, 32%, 99%
XYZ	65.2077, 58.5208, 46.3869
YIQ	203.7360, 45.0220, 10.0620

Conversions

Conversions Part 2

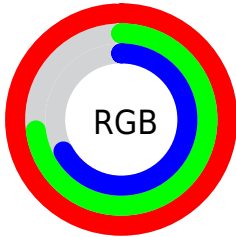
Format	Color
R _Y B	253, 188, 171
Decimal	16628139
CIE Lab	81.03, 22.76, 16.80
CIE LCh	81, 28.290, 36.427
Yxy	58.5208, 0.3833, 0.3440
Android (android.graphics.Color)	4294818219 (0xFFFD9AB)
YUV	203.7360, -16.1388, 43.2045
Hunter-Lab	76.4989, 18.2803, 17.5974

Details

The Hex color **FDB9AB** is a light color, and the websafe version is hex **FFCCCC**. A complement of this color would be **ABEFFD**, and the grayscale version is **CCCCCC**.

A 20% lighter version of the original color is **FFF1E2**, and **C38477** is the 20% darker color. If you saturate the color by 10%, you get **FDA492**, and if you desaturate by 10%, it is **FDCEC4**.

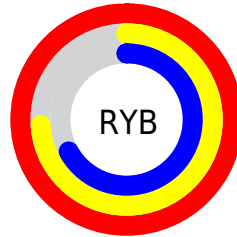
Distribution



Red (99%)

Green (73%)

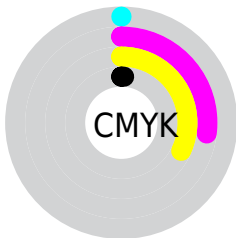
Blue (67%)



Red (99%)

Yellow (74%)

Blue (67%)

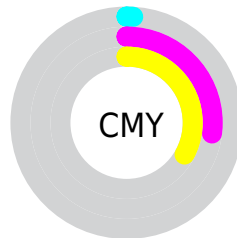


Cyan (0%)

Magenta (27%)

Yellow (32%)

Black (1%)



Cyan (1%)

Magenta (27%)

Yellow (33%)

Brightness & Saturation Gradients

These gradients show how the Hex color FDB9AB changes by changing the brightness by 10 percent. The first figure shows a shift by +10% for each color and the second figure -10%.

Similar to the brightness gradients but the following saturation gradients show a change of the Hex color FDB9AB by changing the saturation by 10% instead.

 FDB9AB

 FDB9AB

FFFFFF

 E09E90

 FFF1E2

 C38477

 A76A5E

 8B5146

 703A30

 56231B

 3D0D01

 260000

 000000

 FDB9AB

 FDB9AB

 FDA492

 FDCEC4

 FD8F78

 FDE3DE

 FD7A5F

 FDF8F7

 FD6546

FDFFFF

 FD502C

 FD3B13

 FD2B00

Harmonies

Analogous

The Analogous color harmony consists of three colors that are next to each other on the color wheel.



FEB6C4



FDB9AB



EFC099

Triad

The Triadic color harmony groups three colors that are evenly spaced from another and form a triangle on the color wheel.



FDB9AB



9CD6B3



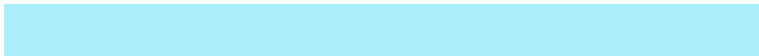
B1CAFD

Complementary

The Complementary color scheme is a pair of colors which are on the opposite of each other on the color wheel.



FDB9AB



ABEFFD

Split Complementary

Split-complementary colors differ from the complementary color scheme. The scheme consists of three colors, the original color and two neighbors of the complement color.



8ED2F9



FDB9AB



83D8CE

Square

The Square scheme is like the rectangle color scheme, but the four colors are evenly spaced on the color wheel.



FDB9AB



BAD19E



7CD7E8



D5C0F4

Rectangle

The Rectangle color scheme consists of four colors that form a rectangle on the color wheel.



FDB9AB



E0C695



7CD7E8



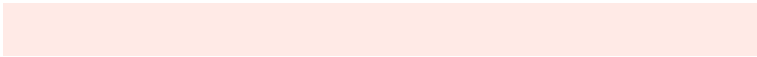
A4CDFD

Sweetspot

The Sweet Spot groups the original color and five complimentary colors.



FDB9AB



FFEAE6



FDABEF



807370



000000



808080

Same Dimension

The Same Dimension uses a secret algorithm to generate beautiful new colors.



FDB9AB



FFAD9C



FDE2AB



807573



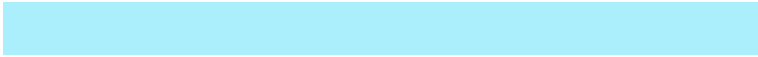
BF2100



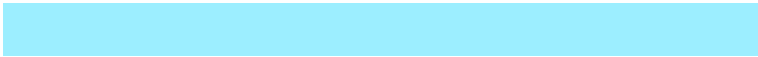
400B00

Inverse Universe

The Inverse Universe completely reimagines the original color for something new.



ABEFFD



9CEEFF



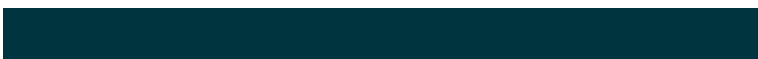
ABC6FD



737D80



009FBF



003540

Previews

White Background



This preview shows how the Hex color FDB9AB looks on a white background.

Color Contrast Check

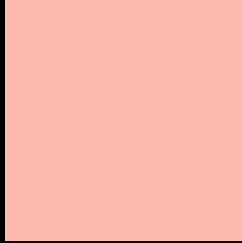
Large Text (above 18pt) WCAG AA × Fail

Any Text WCAG AA × Fail

Large Text (above 18pt) WCAG AAA × Fail

Any Text WCAG AAA × Fail

Black Background



This preview shows how the Hex color FDB9AB looks on a black background.

Color Contrast Check

Large Text (above 18pt) WCAG AA ✓ Pass

Any Text WCAG AA ✓ Pass

Large Text (above 18pt) WCAG AAA ✓ Pass

Any Text WCAG AAA ✓ Pass

If you want to check with other color combinations, try the [Color Contrast Checker](#).

Hex FDB9AB Background



This preview shows how black text looks on a background with the Hex color FDB9AB.

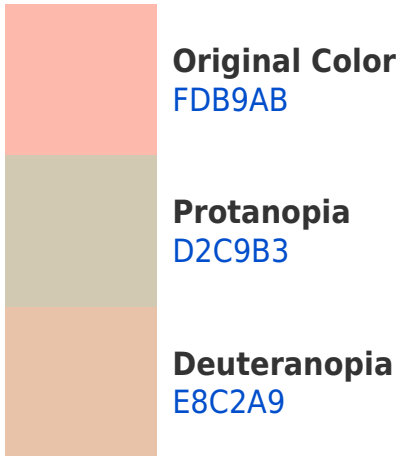


This preview shows how white text looks on a background with the Hex color FDB9AB.

Color Blindness Simulation

Color vision deficiency is a very complex topic, and I could not describe the different causes any better than Wikipedia does, so if you want to learn more, you should check out their [article about color blindness](#).

Dichromacy



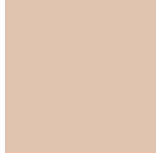


Tritanopia
FFB6C3

Trichromacy



Original Color
FDB9AB



Protanomaly
E2C3B0



Deuteranomaly
F0BFAA

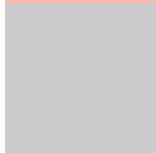


Tritanomaly
FEB7BA

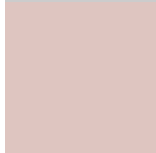
Monochromacy



Original Color
FDB9AB



Achromatopsia
CCCCCC



Achromatomaly
DEC5C0

CSS Examples

Text

The CSS property to change the color of the text to Hex FDB9AB is called "color". The color property can be set on classes, ids or directly on the HTML element.

This example shows how text in the color #FDB9AB looks like.

```
.text, #text, p{  
    color:#FDB9AB  
}
```

If you want to add a text shadow in that color use the text-shadow property, you can generate a text shadow directly with our [CSS Text Shadow Generator](#).

Here you see how black text with a 4 pixel #FDB9AB colored shadow looks like.

```
.shadow{ text-shadow: 4px 4px 2px #FDB9AB
}
```

Border

The CSS property to change the border of an element to Hex FDB9AB is called "border". The border property can be set on classes, ids or directly on the HTML element.

This example shows the color as border, it can be applied via the CSS property "border" or "border-color".

```
.border, #border, table{ border:4px solid
#FDB9AB }
```

If only the border color should be changed use the property `border-color`.

```
.border{ border-color:#FDB9AB }
```

If you want to add a box shadow in that color use:

Here you see how a box with a 4 pixel #FDB9AB colored shadow looks like.

```
.boxshadow{ -moz-box-shadow:4px 4px 4px  
4px #FDB9AB; -webkit-box-shadow:4px 4px  
4px 4px #FDB9AB; box-shadow:4px 4px 4px  
4px #FDB9AB }
```

Background

The CSS property to change the background color of an element to Hex FDB9AB is called "background". The background property can be set on classes, ids or directly on the HTML element.

```
.background, #background, body{  
background:#FDB9AB }
```

If only the background color should be changed can be used:

```
.background{ background-color:#FDB9AB }
```

This example shows the color as background, it is applied via the CSS property "background".

To optimize and compress your CSS code, you can use our [online CSS compressor and optimizer](#) based on csstidy. If you want to create a linear or radial gradient as background or border, check our [CSS Gradient Generator](#).

Hey! You found this booklet interesting? Support Converting Colors with the new Membership Option!

The pro membership hides all ads, plus gives you double the colors in the color bucket, and more awesome pro features!

[Learn more, Memberships starting at \\$2.50/m!](#)

**Follow me
on Twitter!**

@ConvertingColor