

Converting Colors

Hex(FDBDAB)

Have a look what the booklet for
Hex(FDBDAB) contains.

Hex(FDBDAB)	3
<i>Conversions</i>	4
<i>Details</i>	6
<i>Harmonies</i>	11
<i>Previews</i>	23
<i>Color Blindness Simulation</i>	26
<i>CSS Examples</i>	29

Color

Hex(FDBDAB)

Conversions

Conversions Part 1

Format	Color
Hex	FDBDAB
RGB	253, 189, 171
RGB Percent	99%, 74%, 67%
CMY	0.0078, 0.2588, 0.3294
CMYK	0.00, 0.25, 0.32, 0.01
HSL	13°, 95%, 83%
HSV	13°, 32%, 99%
XYZ	66.0563, 60.2181, 46.6698
YIQ	206.0840, 43.9220, 7.9700

Conversions

Conversions Part 2

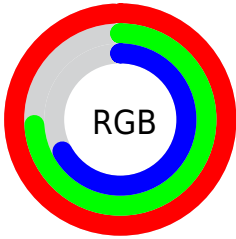
Format	Color
R _Y B	253, 194, 171
Decimal	16629163
CIE Lab	81.96, 20.66, 18.10
CIE LCh	82, 27.466, 41.210
Yxy	60.2181, 0.3820, 0.3482
Android (android.graphics.Color)	4294819243 (0xFFFDDBDAB)
YUV	206.0840, -17.2964, 41.1453
Hunter-Lab	77.6003, 16.1453, 18.6625

Details

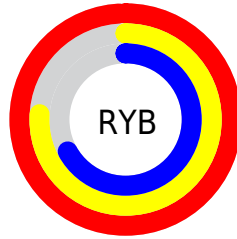
The Hex color **FDBDAB** is a light color, and the websafe version is hex **FFCCCC**. A complement of this color would be **ABEBFD**, and the grayscale version is **CECECE**.

A 20% lighter version of the original color is **FFF5E2**, and **C38777** is the 20% darker color. If you saturate the color by 10%, you get **FDA992**, and if you desaturate by 10%, it is **FDD1C4**.

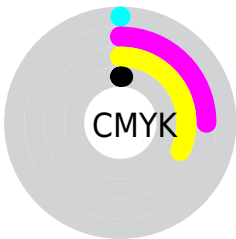
Distribution



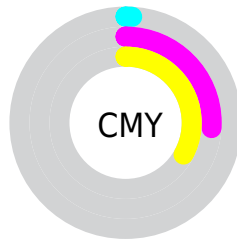
- Red (99%)
- Green (74%)
- Blue (67%)



- Red (99%)
- Yellow (76%)
- Blue (67%)



- Cyan (0%)
- Magenta (25%)
- Yellow (32%)
- Black (1%)



- Cyan (1%)
- Magenta (26%)
- Yellow (33%)

Brightness & Saturation Gradients

These gradients show how the Hex color FDBDAB changes by changing the brightness by 10 percent. The first figure shows a shift by +10% for each color and the second figure -10%.

Similar to the brightness gradients but the following saturation gradients show a change of the Hex color FDBDAB by changing the saturation by 10% instead.

 FDBDAB

FFFFFF

 FFF5E2

 FDBDAB

 E0A290

 C38777

 A76E5E

 8B5546

 703E30

 56271B

 3D1101

 260000

 000000

 FDBDAB

 FDBDAB

 FDA992

 FDD1C4

 FD9678

 FDE4DE

 FD825F

 FDF8F7

 FD6E46

FDFFFF

 FD5A2C

 FD4713

 FD3800

Harmonies

Analogous

The Analogous color harmony consists of three colors that are next to each other on the color wheel.



FFB9C3



FDBDAB



EDC59C

Triad

The Triadic color harmony groups three colors that are evenly spaced from another and form a triangle on the color wheel.



FDBDAB



9BD9BA



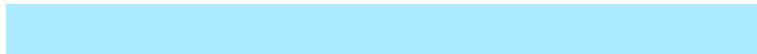
BACBFE

Complementary

The Complementary color scheme is a pair of colors which are on the opposite of each other on the color wheel.



FDBDAB



ABEBFD

Split Complementary

Split-complementary colors differ from the complementary color scheme. The scheme consists of three colors, the original color and two neighbors of the complement color.



98D3FC



FDBDAB



86DAD5

Square

The Square scheme is like the rectangle color scheme, but the four colors are evenly spaced on the color wheel.



FDBDAB



B8D4A4



83D8ED



DCC2F3

Rectangle

The Rectangle color scheme consists of four colors that form a rectangle on the color wheel.



FDBDAB



DECA98



83D8ED



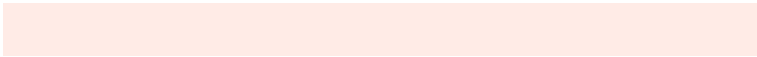
AECEFF

Sweetspot

The Sweet Spot groups the original color and five complimentary colors.



FDBDAB



FFEBE6



FDABEB



807470



000000



808080

Same Dimension

The Same Dimension uses a secret algorithm to generate beautiful new colors.



FDBDAB



FFB19C



FDE6AB



807673



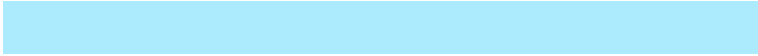
BF2A00



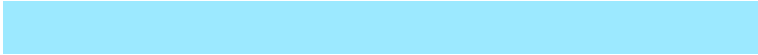
400E00

Inverse Universe

The Inverse Universe completely reimagines the original color for something new.



ABEBFD



9CE9FF



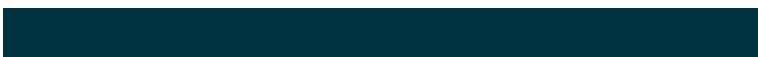
ABC2FD



737D80



0095BF



003240

Previews

White Background



This preview shows how the Hex color FBDAB looks on a white background.

Color Contrast Check

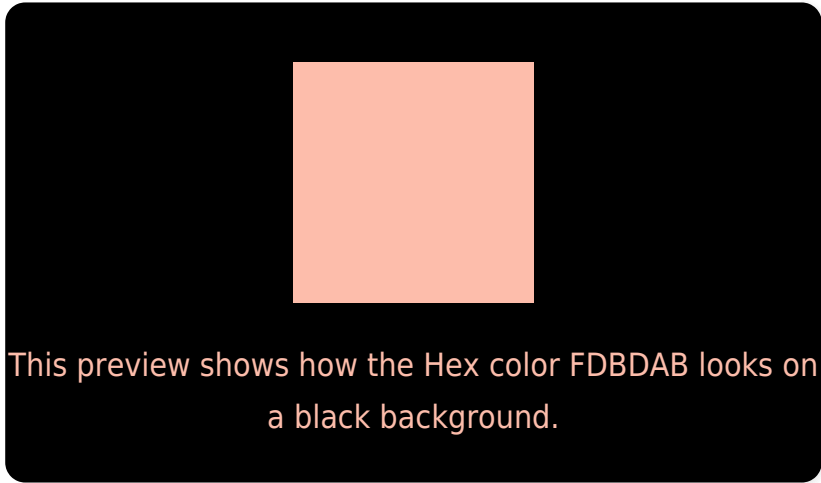
Large Text (above 18pt) WCAG AA × Fail

Any Text WCAG AA × Fail

Large Text (above 18pt) WCAG AAA × Fail

Any Text WCAG AAA × Fail

Black Background



Color Contrast Check

Large Text (above 18pt) WCAG AA ✓ Pass

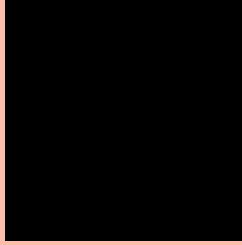
Any Text WCAG AA ✓ Pass

Large Text (above 18pt) WCAG AAA ✓ Pass

Any Text WCAG AAA ✓ Pass

If you want to check with other color combinations, try the [Color Contrast Checker](#).

Hex FDBDAB Background



This preview shows how black text looks on a background with the Hex color FDBDAB.

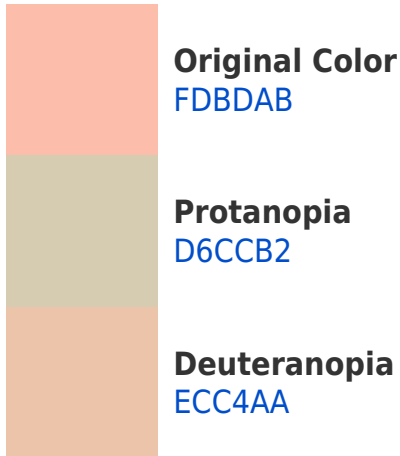


This preview shows how white text looks on a background with the Hex color FDBDAB.

Color Blindness Simulation

Color vision deficiency is a very complex topic, and I could not describe the different causes any better than Wikipedia does, so if you want to learn more, you should check out their [article about color blindness](#).

Dichromacy



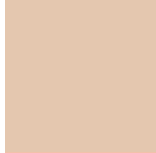


Tritanopia
FFB9C7

Trichromacy



Original Color
FDBDAB



Protanomaly
E4C7AF



Deuteranomaly
F2C1AA

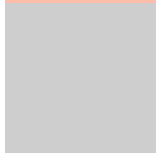


Tritanomaly
FEBABD

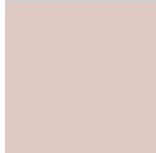
Monochromacy



Original Color
FDBDAB



Achromatopsia
CECECE



Achromatomaly
DFC8C1

CSS Examples

Text

The CSS property to change the color of the text to Hex FDBDAB is called "color". The color property can be set on classes, ids or directly on the HTML element.

This example shows how text in the color #FDBDAB looks like.

```
.text, #text, p{  
    color:#FDBDAB  
}
```

If you want to add a text shadow in that color use the text-shadow property, you can generate a text shadow directly with our [CSS Text Shadow Generator](#).

Here you see how black text with a 4 pixel #FDBDAB colored shadow looks like.

```
.shadow{ text-shadow: 4px 4px 2px #FDBDAB
}
```

Border

The CSS property to change the border of an element to Hex FDBDAB is called "border". The border property can be set on classes, ids or directly on the HTML element.

This example shows the color as border, it can be applied via the CSS property "border" or "border-color".

```
.border, #border, table{ border:4px solid
#FDBDAB }
```

If only the border color should be changed use the property `border-color`.

```
.border{ border-color:#FDBDAB }
```

If you want to add a box shadow in that color use:

Here you see how a box with a 4 pixel #FDBDAB colored shadow looks like.

```
.boxshadow{ -moz-box-shadow:4px 4px 4px  
4px #FDBDAB; -webkit-box-shadow:4px 4px  
4px 4px #FDBDAB; box-shadow:4px 4px 4px  
4px #FDBDAB }
```

Background

The CSS property to change the background color of an element to Hex FDBDAB is called "background". The background property can be set on classes, ids or directly on the HTML element.

```
.background, #background, body{  
background:#FDBDAB }
```

If only the background color should be changed can be used:

```
.background{ background-color:#FDBDAB }
```

This example shows the color as background, it is applied via the CSS property "background".

To optimize and compress your CSS code, you can use our [online CSS compressor and optimizer](#) based on csstidy. If you want to create a linear or radial gradient as background or border, check our [CSS Gradient Generator](#).

Hey! You found this booklet interesting? Support Converting Colors with the new Membership Option!

The pro membership hides all ads, plus gives you double the colors in the color bucket, and more awesome pro features!

[Learn more, Memberships starting at \\$2.50/m!](#)

**Follow me
on Twitter!**

@ConvertingColor