

Converting Colors

Hex(FDC0BF)

Have a look what the booklet for
Hex(FDC0BF) contains.

Hex(FDC0BF)	3
<i>Conversions</i>	4
<i>Details</i>	6
<i>Harmonies</i>	11
<i>Previews</i>	23
<i>Color Blindness Simulation</i>	26
<i>CSS Examples</i>	29

Color

Hex(FDC0BF)

Conversions

Conversions Part 1

Format	Color
Hex	FDC0BF
RGB	253, 192, 191
RGB Percent	99%, 75%, 75%
CMY	0.0078, 0.2471, 0.2510
CMYK	0.00, 0.24, 0.25, 0.01
HSL	1°, 94%, 87%
HSV	1°, 25%, 99%
XYZ	68.7616, 62.3435, 57.6996
YIQ	210.1250, 36.6770, 12.6210

Conversions

Conversions Part 2

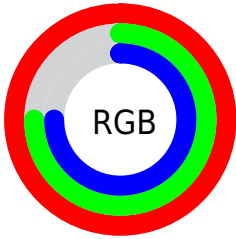
Format	Color
R _Y B	253, 192, 191
Decimal	16629951
CIE Lab	83.10, 21.72, 9.01
CIE LCh	83, 23.512, 22.530
Yxy	62.3435, 0.3642, 0.3302
Android (android.graphics.Color)	4294820031 (0xFFFD C0BF)
YUV	210.1250, -9.4286, 37.6014
Hunter-Lab	78.9579, 17.2729, 11.9435

Details

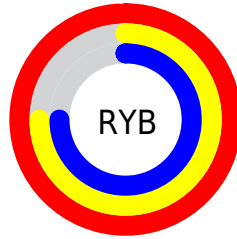
The Hex color **FDC0BF** is a light color, and the websafe version is hex **FFCCCC**. A complement of this color would be **BFFCFD**, and the grayscale version is **D2D2D2**.

A 20% lighter version of the original color is **FFF9F7**, and **C38A8A** is the 20% darker color. If you saturate the color by 10%, you get **FDA7A6**, and if you desaturate by 10%, it is **FDD9D8**.

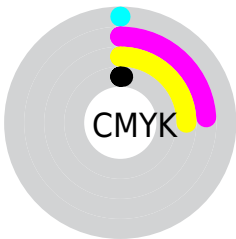
Distribution



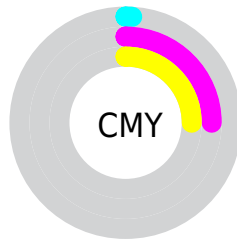
- Red (99%)
- Green (75%)
- Blue (75%)



- Red (99%)
- Yellow (75%)
- Blue (75%)



- Cyan (0%)
- Magenta (24%)
- Yellow (25%)
- Black (1%)



- Cyan (1%)
- Magenta (25%)
- Yellow (25%)

Brightness & Saturation Gradients

These gradients show how the Hex color FDC0BF changes by changing the brightness by 10 percent. The first figure shows a shift by +10% for each color and the second figure -10%.

Similar to the brightness gradients but the following saturation gradients show a change of the Hex color FDC0BF by changing the saturation by 10% instead.

 FDC0BF

 FDC0BF

FFFFFF

 E0A5A4

 FFF9F7

 C38A8A

 A77170

 8C5858

 724041

 58292B

 3F1316

 290000

 000000

 FDC0BF

 FDC0BF

 FDA7A6

 FDD9D8

 FD8E8C

 FDF2F2

 FD7573

FDFFFF

 FD5C5A

 FD4441

 FD2B27

 FD120E

 FD0400

Harmonies

Analogous

The Analogous color harmony consists of three colors that are next to each other on the color wheel.



F8C0D5



FDC0BF



F6C5AD

Triad

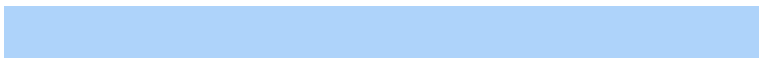
The Triadic color harmony groups three colors that are evenly spaced from another and form a triangle on the color wheel.



FDC0BF



B5D8B4



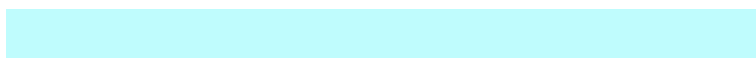
AED3FA

Complementary

The Complementary color scheme is a pair of colors which are on the opposite of each other on the color wheel.



FDC0BF



BFFCFD

Split Complementary

Split-complementary colors differ from the complementary color scheme. The scheme consists of three colors, the original color and two neighbors of the complement color.



98D8F1



FDC0BF



9EDBC8

Square

The Square scheme is like the rectangle color scheme, but the four colors are evenly spaced on the color wheel.



FDC0BF



CED3A6



92DBDF



CCCBF8

Rectangle

The Rectangle color scheme consists of four colors that form a rectangle on the color wheel.



FDC0BF



ECC9A5



92DBDF



A5D5F9

Sweetspot

The Sweet Spot groups the original color and five complimentary colors.



FDC0BF



FFEDED



FDBFFD



807575



000000



808080

Same Dimension

The Same Dimension uses a secret algorithm to generate beautiful new colors.



FDC0BF



FFB6B5



FDDEBF



807373



BF0300



400100

Inverse Universe

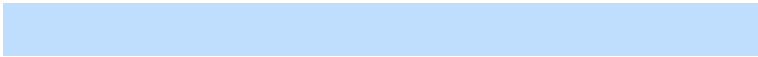
The Inverse Universe completely reimagines the original color for something new.



BFFCFD



B5FEFF



BFDEFD



737F80



00BCBF



003F40

Previews

White Background



This preview shows how the Hex color FDC0BF looks on a white background.

Color Contrast Check

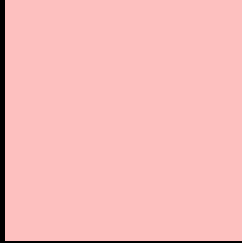
Large Text (above 18pt) WCAG AA × Fail

Any Text WCAG AA × Fail

Large Text (above 18pt) WCAG AAA × Fail

Any Text WCAG AAA × Fail

Black Background



This preview shows how the Hex color FDC0BF looks on a black background.

Color Contrast Check

Large Text (above 18pt) WCAG AA ✓ Pass

Any Text WCAG AA ✓ Pass

Large Text (above 18pt) WCAG AAA ✓ Pass

Any Text WCAG AAA ✓ Pass

If you want to check with other color combinations, try the [Color Contrast Checker](#).

Hex FDC0BF Background



This preview shows how black text looks on a background with the Hex color FDC0BF.

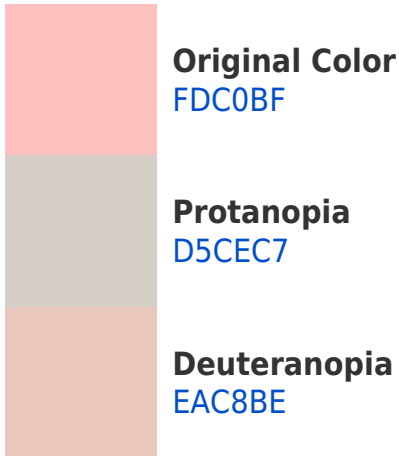


This preview shows how white text looks on a background with the Hex color FDC0BF.

Color Blindness Simulation

Color vision deficiency is a very complex topic, and I could not describe the different causes any better than Wikipedia does, so if you want to learn more, you should check out their [article about color blindness](#).

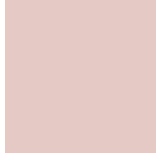
Dichromacy



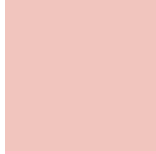
Trichromacy



Original Color
FDC0BF



Protanomaly
E4C9C4



Deuteranomaly
F1C5BE

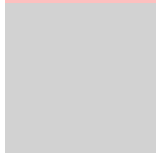


Tritanomaly
FEBFC8

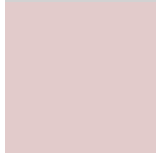
Monochromacy



Original Color
FDC0BF



Achromatopsia
D2D2D2



Achromatomaly
E2CBCB

CSS Examples

Text

The CSS property to change the color of the text to Hex FDC0BF is called "color". The color property can be set on classes, ids or directly on the HTML element.

This example shows how text in the color #FDC0BF looks like.

```
.text, #text, p{  
    color:#FDC0BF  
}
```

If you want to add a text shadow in that color use the text-shadow property, you can generate a text shadow directly with our [CSS Text Shadow Generator](#).

Here you see how black text with a 4 pixel #FDC0BF colored shadow looks like.

```
.shadow{ text-shadow: 4px 4px 2px #FDC0BF
}
```

Border

The CSS property to change the border of an element to Hex FDC0BF is called "border". The border property can be set on classes, ids or directly on the HTML element.

This example shows the color as border, it can be applied via the CSS property "border" or "border-color".

```
.border, #border, table{ border:4px solid
#FDC0BF }
```

If only the border color should be changed use the property `border-color`.

```
.border{ border-color:#FDC0BF }
```

If you want to add a box shadow in that color use:

Here you see how a box with a 4 pixel #FDC0BF colored shadow looks like.

```
.boxshadow{ -moz-box-shadow:4px 4px 4px  
4px #FDC0BF; -webkit-box-shadow:4px 4px  
4px 4px #FDC0BF; box-shadow:4px 4px 4px  
4px #FDC0BF }
```

Background

The CSS property to change the background color of an element to Hex FDC0BF is called "background". The background property can be set on classes, ids or directly on the HTML element.

```
.background, #background, body{  
background:#FDC0BF }
```

If only the background color should be changed can be used:

```
.background{ background-color:#FDC0BF }
```

This example shows the color as background, it is applied via the CSS property "background".

To optimize and compress your CSS code, you can use our [online CSS compressor and optimizer](#) based on csstidy. If you want to create a linear or radial gradient as background or border, check our [CSS Gradient Generator](#).

Hey! You found this booklet interesting? Support Converting Colors with the new Membership Option!

The pro membership hides all ads, plus gives you double the colors in the color bucket, and more awesome pro features!

[Learn more, Memberships starting at \\$2.50/m!](#)

**Follow me
on Twitter!**

@ConvertingColor