

Converting Colors

Hex(FDC3CD)

Have a look what the booklet for
Hex(FDC3CD) contains.

| | |
|--|----|
| Hex(FDC3CD) | 3 |
| <i>Conversions</i> | 4 |
| <i>Details</i> | 6 |
| <i>Harmonies</i> | 11 |
| <i>Previews</i> | 23 |
| <i>Color Blindness Simulation</i> | 26 |
| <i>CSS Examples</i> | 29 |

Color

Hex(FDC3CD)

Conversions

Conversions Part 1

| Format | Color |
|-------------|----------------------------|
| Hex | FDC3CD |
| RGB | 253, 195, 205 |
| RGB Percent | 99%, 76%, 80% |
| CMY | 0.0078, 0.2353, 0.1961 |
| CMYK | 0.00, 0.23, 0.19, 0.01 |
| HSL | 350°, 94%, 88% |
| HSV | 350°, 23%, 99% |
| XYZ | 71.0426, 64.3206, 66.4284 |
| YIQ | 213.4820, 31.3580, 15.4060 |

Conversions

Conversions Part 2

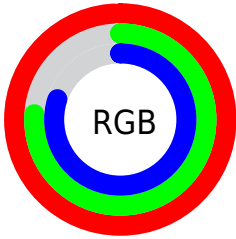
| Format | Color |
|-------------------------------------|-------------------------------|
| R _Y B | 253, 195, 205 |
| Decimal | 16630733 |
| CIE Lab | 84.13, 22.16, 3.02 |
| CIE LCh | 84, 22.363, 7.749 |
| Yxy | 64.3206, 0.3521, 0.3187 |
| Android (android.graphics.Color) | 4294820813 (0xFFFD3CD) |
| YUV | 213.4820, -4.1816, 34.6573 |
| Hunter-Lab | 80.2001, 17.7679, 7.0312 |

Details

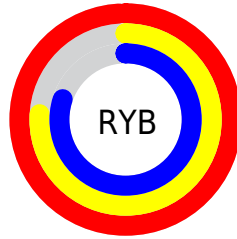
The Hex color **FDC3CD** is a light color, and the websafe version is hex **FFCCCC**. A complement of this color would be **C3FDF3**, and the grayscale version is **D6D6D6**.

A 20% lighter version of the original color is **FFFCFF**, and **C48D97** is the 20% darker color. If you saturate the color by 10%, you get **FDAAB8**, and if you desaturate by 10%, it is **FDDCE2**.

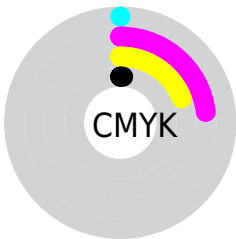
Distribution



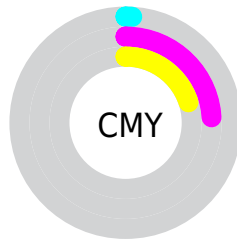
- Red (99%)
- Green (76%)
- Blue (80%)



- Red (99%)
- Yellow (76%)
- Blue (80%)



- Cyan (0%)
- Magenta (23%)
- Yellow (19%)
- Black (1%)



- Cyan (1%)
- Magenta (24%)
- Yellow (20%)

Brightness & Saturation Gradients

These gradients show how the Hex color FDC3CD changes by changing the brightness by 10 percent. The first figure shows a shift by +10% for each color and the second figure -10%.

Similar to the brightness gradients but the following saturation gradients show a change of the Hex color FDC3CD by changing the saturation by 10% instead.

 FDC3CD

FFFFFF

 FFFCFF

 FDC3CD

 E0A8B2

 C48D97

 A8737D

 8D5A64

 72424C

 592B36

 401520

 2A0009

 000000

 FDC3CD

 FDC3CD

 FDAAB8

 FDDCE2

 FD90A3

 FDF6F7

 FD778E

 FDFFFF

 FD5E79

 FD4564

 FD2B4F

 FD123A

 FD002C

Harmonies

Analogous

The Analogous color harmony consists of three colors that are next to each other on the color wheel.



F2C5E2



FDC3CD



FCC5B9

Triad

The Triadic color harmony groups three colors that are evenly spaced from another and form a triangle on the color wheel.



FDC3CD



C5D8B0



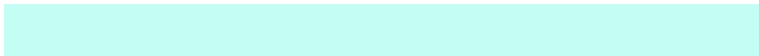
A7D8F8

Complementary

The Complementary color scheme is a pair of colors which are on the opposite of each other on the color wheel.



FDC3CD



C3FDF3

Split Complementary

Split-complementary colors differ from the complementary color scheme. The scheme consists of three colors, the original color and two neighbors of the complement color.



99DDEB



FDC3CD



ADDDC1

Square

The Square scheme is like the rectangle color scheme, but the four colors are evenly spaced on the color wheel.



FDC3CD



DDD2A8



9DDED7



C1D2FB

Rectangle

The Rectangle color scheme consists of four colors that form a rectangle on the color wheel.



FDC3CD



F5C9AF



9DDED7



A1DAF5

Sweetspot

The Sweet Spot groups the original color and five complimentary colors.



FDC3CD



FFEDF0



F2C3FD



807577



000000



808080

Same Dimension

The Same Dimension uses a secret algorithm to generate beautiful new colors.



FDC3CD



FFB8C4



FDD5C3



807375



BF0021



40000B

Inverse Universe

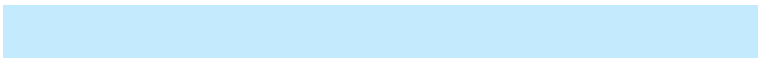
The Inverse Universe completely reimagines the original color for something new.



FDC3CD



FFB8C4



C3EBFD



807375



BF0021



40000B

Previews

White Background



This preview shows how the Hex color FDC3CD looks on a white background.

Color Contrast Check

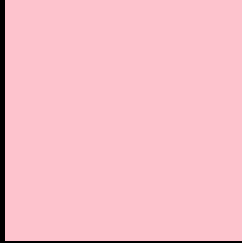
Large Text (above 18pt) WCAG AA × Fail

Any Text WCAG AA × Fail

Large Text (above 18pt) WCAG AAA × Fail

Any Text WCAG AAA × Fail

Black Background



This preview shows how the Hex color FDC3CD looks on a black background.

Color Contrast Check

Large Text (above 18pt) WCAG AA ✓ Pass

Any Text WCAG AA ✓ Pass

Large Text (above 18pt) WCAG AAA ✓ Pass

Any Text WCAG AAA ✓ Pass

If you want to check with other color combinations, try the [Color Contrast Checker](#).

Hex FDC3CD Background



This preview shows how black text looks on a background with the Hex color FDC3CD.

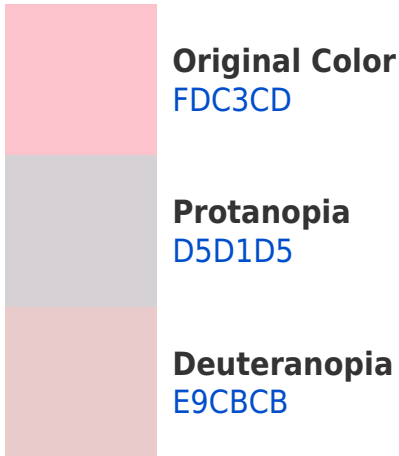


This preview shows how white text looks on a background with the Hex color FDC3CD.

Color Blindness Simulation

Color vision deficiency is a very complex topic, and I could not describe the different causes any better than Wikipedia does, so if you want to learn more, you should check out their [article about color blindness](#).

Dichromacy



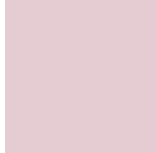


Tritanopia
FEC2D1

Trichromacy



Original Color
FDC3CD



Protanomaly
E4CCD2



Deuteranomaly
F0C8CC

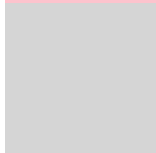


Tritanomaly
FEC2D0

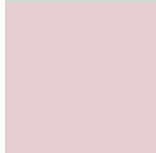
Monochromacy



Original Color
FDC3CD



Achromatopsia
D5D5D5



Achromatomaly
E4CED2

CSS Examples

Text

The CSS property to change the color of the text to Hex FDC3CD is called "color". The color property can be set on classes, ids or directly on the HTML element.

This example shows how text in the color #FDC3CD looks like.

```
.text, #text, p{  
    color:#FDC3CD  
}
```

If you want to add a text shadow in that color use the text-shadow property, you can generate a text shadow directly with our [CSS Text Shadow Generator](#).

Here you see how black text with a 4 pixel #FDC3CD colored shadow looks like.

```
.shadow{ text-shadow: 4px 4px 2px #FDC3CD
}
```

Border

The CSS property to change the border of an element to Hex FDC3CD is called "border". The border property can be set on classes, ids or directly on the HTML element.

This example shows the color as border, it can be applied via the CSS property "border" or "border-color".

```
.border, #border, table{ border:4px solid
#FDC3CD }
```

If only the border color should be changed use the property `border-color`.

```
.border{ border-color:#FDC3CD }
```

If you want to add a box shadow in that color use:

Here you see how a box with a 4 pixel #FDC3CD colored shadow looks like.

```
.boxshadow{ -moz-box-shadow:4px 4px 4px  
4px #FDC3CD; -webkit-box-shadow:4px 4px  
4px 4px #FDC3CD; box-shadow:4px 4px 4px  
4px #FDC3CD }
```

Background

The CSS property to change the background color of an element to Hex FDC3CD is called "background". The background property can be set on classes, ids or directly on the HTML element.

```
.background, #background, body{  
background:#FDC3CD }
```

If only the background color should be changed can be used:

```
.background{ background-color:#FDC3CD }
```

This example shows the color as background, it is applied via the CSS property "background".

To optimize and compress your CSS code, you can use our [online CSS compressor and optimizer](#) based on csstidy. If you want to create a linear or radial gradient as background or border, check our [CSS Gradient Generator](#).

Hey! You found this booklet interesting? Support Converting Colors with the new Membership Option!

The pro membership hides all ads, plus gives you double the colors in the color bucket, and more awesome pro features!

[Learn more, Memberships starting at \\$2.50/m!](#)

**Follow me
on Twitter!**

@ConvertingColor