

Converting Colors

Hex(FDC3D3)

Have a look what the booklet for
Hex(FDC3D3) contains.

| | |
|--|----|
| Hex(FDC3D3) | 3 |
| <i>Conversions</i> | 4 |
| <i>Details</i> | 6 |
| <i>Harmonies</i> | 11 |
| <i>Previews</i> | 23 |
| <i>Color Blindness Simulation</i> | 26 |
| <i>CSS Examples</i> | 29 |

Color

Hex(FDC3D3)

Conversions

Conversions Part 1

| Format | Color |
|-------------|----------------------------|
| Hex | FDC3D3 |
| RGB | 253, 195, 211 |
| RGB Percent | 99%, 76%, 83% |
| CMY | 0.0078, 0.2353, 0.1725 |
| CMYK | 0.00, 0.23, 0.17, 0.01 |
| HSL | 343°, 94%, 88% |
| HSV | 343°, 23%, 99% |
| XYZ | 71.7810, 64.6160, 70.3169 |
| YIQ | 214.1660, 29.4320, 17.2720 |

Conversions

Conversions Part 2

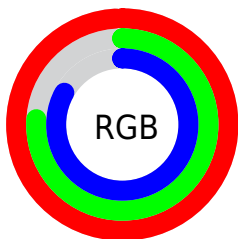
| Format | Color |
|-------------------------------------|-------------------------------|
| R _Y B | 253, 195, 211 |
| Decimal | 16630739 |
| CIE Lab | 84.29, 23.07, 0.03 |
| CIE LCh | 84, 23.066, 0.079 |
| Yxy | 64.6160, 0.3472, 0.3126 |
| Android (android.graphics.Color) | 4294820819 (0xFFFDC3D3) |
| YUV | 214.1660, -1.5608, 34.0574 |
| Hunter-Lab | 80.3841, 18.7239, 4.4043 |

Details

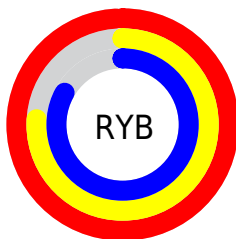
The Hex color **FDC3D3** is a light color, and the websafe version is hex **FFCCCC**. A complement of this color would be **C3FDED**, and the grayscale version is **D6D6D6**.

A 20% lighter version of the original color is **FFFCFF**, and **C48D9D** is the 20% darker color. If you saturate the color by 10%, you get **FDAAC1**, and if you desaturate by 10%, it is **FDDCE5**.

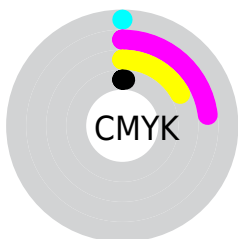
Distribution



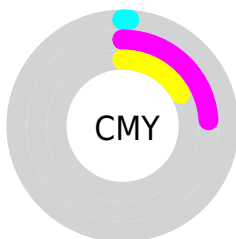
- Red (99%)
- Green (76%)
- Blue (83%)



- Red (99%)
- Yellow (76%)
- Blue (83%)



- Cyan (0%)
- Magenta (23%)
- Yellow (17%)
- Black (1%)



- Cyan (1%)
- Magenta (24%)
- Yellow (17%)

Brightness & Saturation Gradients

These gradients show how the Hex color FDC3D3 changes by changing the brightness by 10 percent. The first figure shows a shift by +10% for each color and the second figure -10%.

Similar to the brightness gradients but the following saturation gradients show a change of the Hex color FDC3D3 by changing the saturation by 10% instead.

 FDC3D3

 FDC3D3

FFFFFF

 E0A8B7

 FFFCFF

 C48D9D

 A87383

 8D5A69

 734251

 592B3A

 411525

 2A0010

 000000

 FDC3D3

 FDC3D3

 FDAAC1

 FDDCE5

 FD90AE

 FDF6F8

 FD779C

FDFFFF

 FD5E8A

 FD4577

 FD2B65

 FD1253

 FD0046

Harmonies

Analogous

The Analogous color harmony consists of three colors that are next to each other on the color wheel.



EFC6E8



FDC3D3



FFC4BD

Triad

The Triadic color harmony groups three colors that are evenly spaced from another and form a triangle on the color wheel.



FDC3D3



CBD8AC



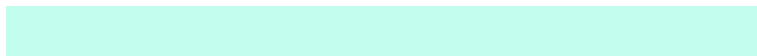
A1DAF7

Complementary

The Complementary color scheme is a pair of colors which are on the opposite of each other on the color wheel.



FDC3D3



C3FDED

Split Complementary

Split-complementary colors differ from the complementary color scheme. The scheme consists of three colors, the original color and two neighbors of the complement color.



97DEE7



FDC3D3



B3DDBC

Square

The Square scheme is like the rectangle color scheme, but the four colors are evenly spaced on the color wheel.



FDC3D3



E3D1A7



9EDFD2



B9D4FD

Rectangle

The Rectangle color scheme consists of four colors that form a rectangle on the color wheel.



FDC3D3



FAC8B2



9EDFD2



9BDCF3

Sweetspot

The Sweet Spot groups the original color and five complimentary colors.



FDC3D3



FFEDF2



EDC3FD



807578



000000



808080

Same Dimension

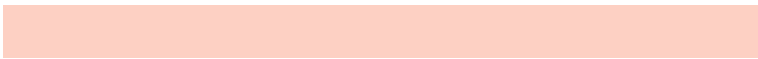
The Same Dimension uses a secret algorithm to generate beautiful new colors.



FDC3D3



FFB8CB



FDD0C3



807376



BF0035



400012

Inverse Universe

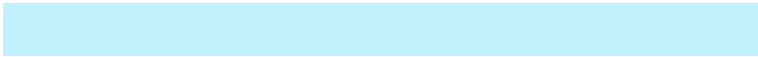
The Inverse Universe completely reimagines the original color for something new.



FDC3D3



FFB8CB



C3F0FD



807376



BF0035



400012

Previews

White Background



This preview shows how the Hex color FDC3D3 looks on a white background.

Color Contrast Check

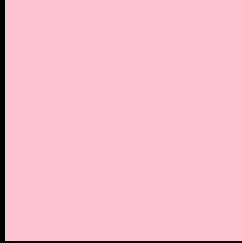
Large Text (above 18pt) WCAG AA × Fail

Any Text WCAG AA × Fail

Large Text (above 18pt) WCAG AAA × Fail

Any Text WCAG AAA × Fail

Black Background



This preview shows how the Hex color FDC3D3 looks on a black background.

Color Contrast Check

Large Text (above 18pt) WCAG AA ✓ Pass

Any Text WCAG AA ✓ Pass

Large Text (above 18pt) WCAG AAA ✓ Pass

Any Text WCAG AAA ✓ Pass

If you want to check with other color combinations, try the [Color Contrast Checker](#).

Hex FDC3D3 Background



This preview shows how black text looks on a background with the Hex color FDC3D3.

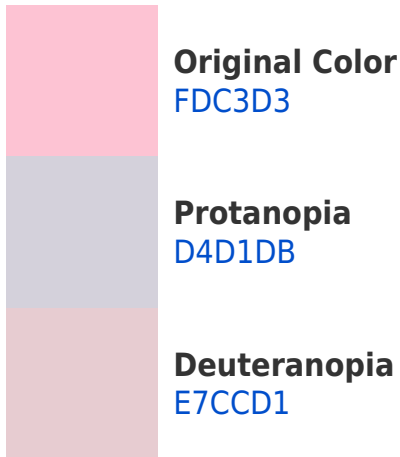


This preview shows how white text looks on a background with the Hex color FDC3D3.

Color Blindness Simulation

Color vision deficiency is a very complex topic, and I could not describe the different causes any better than Wikipedia does, so if you want to learn more, you should check out their [article about color blindness](#).

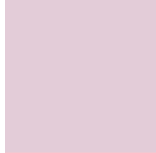
Dichromacy



Trichromacy



Original Color
FDC3D3



Protanomaly
E3CCD8



Deuteranomaly
EFC9D2

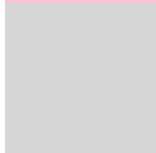


Tritanomaly
FDC3D2

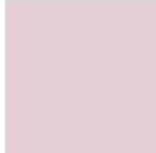
Monochromacy



Original Color
FDC3D3



Achromatopsia
D6D6D6



Achromatomaly
E4CFD5

CSS Examples

Text

The CSS property to change the color of the text to Hex FDC3D3 is called "color". The color property can be set on classes, ids or directly on the HTML element.

This example shows how text in the color #FDC3D3 looks like.

```
.text, #text, p{  
    color:#FDC3D3  
}
```

If you want to add a text shadow in that color use the text-shadow property, you can generate a text shadow directly with our [CSS Text Shadow Generator](#).

Here you see how black text with a 4 pixel #FDC3D3 colored shadow looks like.

```
.shadow{ text-shadow: 4px 4px 2px #FDC3D3  
}
```

Border

The CSS property to change the border of an element to Hex FDC3D3 is called "border". The border property can be set on classes, ids or directly on the HTML element.

This example shows the color as border, it can be applied via the CSS property "border" or "border-color".

```
.border, #border, table{ border:4px solid  
#FDC3D3 }
```

If only the border color should be changed use the property `border-color`.

```
.border{ border-color:#FDC3D3 }
```

If you want to add a box shadow in that color use:

Here you see how a box with a 4 pixel #FDC3D3 colored shadow looks like.

```
.boxshadow{ -moz-box-shadow:4px 4px 4px  
4px #FDC3D3; -webkit-box-shadow:4px 4px  
4px 4px #FDC3D3; box-shadow:4px 4px 4px  
4px #FDC3D3 }
```

Background

The CSS property to change the background color of an element to Hex FDC3D3 is called "background". The background property can be set on classes, ids or directly on the HTML element.

```
.background, #background, body{  
background:#FDC3D3 }
```

If only the background color should be changed can be used:

```
.background{ background-color:#FDC3D3 }
```

This example shows the color as background, it is applied via the CSS property "background".

To optimize and compress your CSS code, you can use our [online CSS compressor and optimizer](#) based on csstidy. If you want to create a linear or radial gradient as background or border, check our [CSS Gradient Generator](#).

Hey! You found this booklet interesting? Support Converting Colors with the new Membership Option!

The pro membership hides all ads, plus gives you double the colors in the color bucket, and more awesome pro features!

[Learn more, Memberships starting at \\$2.50/m!](#)

**Follow me
on Twitter!**

@ConvertingColor