

Converting Colors

Hex(FDC4CA)

Have a look what the booklet for
Hex(FDC4CA) contains.

Hex(FDC4CA)	3
<i>Conversions</i>	4
<i>Details</i>	6
<i>Harmonies</i>	11
<i>Previews</i>	23
<i>Color Blindness Simulation</i>	26
<i>CSS Examples</i>	29

Color

Hex(FDC4CA)

Conversions

Conversions Part 1

Format	Color
Hex	FDC4CA
RGB	253, 196, 202
RGB Percent	99%, 77%, 79%
CMY	0.0078, 0.2314, 0.2078
CMYK	0.00, 0.23, 0.20, 0.01
HSL	354°, 93%, 88%
HSV	354°, 23%, 99%
XYZ	70.9086, 64.6268, 64.6140
YIQ	213.7270, 32.0460, 13.9500

Conversions

Conversions Part 2

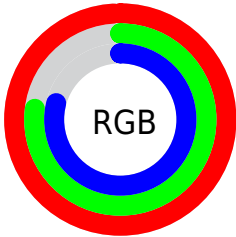
Format	Color
R _{YB}	253, 196, 202
Decimal	16630986
CIE _{Lab}	84.29, 21.19, 4.85
CIE _{LCh}	84, 21.737, 12.885
Yxy	64.6268, 0.3543, 0.3229
Android (android.graphics.Color)	4294821066 (0xFFFDCA)
YUV	213.7270, -5.7814, 34.4424
Hunter-Lab	80.3908, 16.7619, 8.6192

Details

The Hex color **FDC4CA** is a light color, and the websafe version is hex **FFCCCC**. A complement of this color would be **C4FDF7**, and the grayscale version is **D6D6D6**.

A 20% lighter version of the original color is **FFFDFD**, and **C48E94** is the 20% darker color. If you saturate the color by 10%, you get **FDABB3**, and if you desaturate by 10%, it is **FDDDE1**.

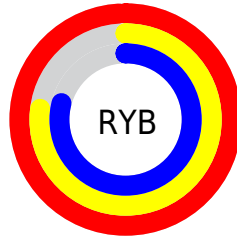
Distribution



Red (99%)

Green (77%)

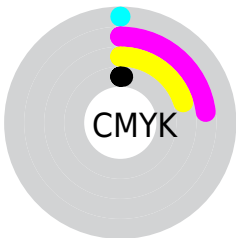
Blue (79%)



Red (99%)

Yellow (77%)

Blue (79%)

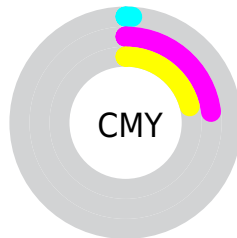


Cyan (0%)

Magenta (23%)

Yellow (20%)

Black (1%)



Cyan (1%)

Magenta (23%)

Yellow (21%)

Brightness & Saturation Gradients

These gradients show how the Hex color FDC4CA changes by changing the brightness by 10 percent. The first figure shows a shift by +10% for each color and the second figure -10%.

Similar to the brightness gradients but the following saturation gradients show a change of the Hex color FDC4CA by changing the saturation by 10% instead.

 FDC4CA

 FDC4CA

FFFFFF

 E0A9AF

 FFFDFD

 C48E94

 A8747A

 8D5B61

 72434A

 592C33

 40161E

 2A0005

 000000

 FDC4CA

 FDC4CA

 FDABB3

 FDDDE1

 FD919D

 FDF7F7

 FD7886

 FDFFFF

 FD5F6F

 FD4659

 FD2C42

 FD132C

 FD001B

Harmonies

Analogous

The Analogous color harmony consists of three colors that are next to each other on the color wheel.



F4C5DF



FDC4CA



FAC7B7

Triad

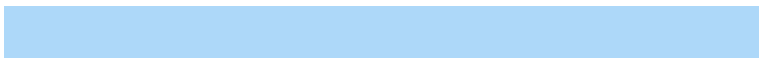
The Triadic color harmony groups three colors that are evenly spaced from another and form a triangle on the color wheel.



FDC4CA



C2DAB4



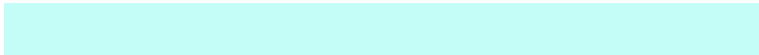
ADD8F9

Complementary

The Complementary color scheme is a pair of colors which are on the opposite of each other on the color wheel.



FDC4CA



C4FDF7

Split Complementary

Split-complementary colors differ from the complementary color scheme. The scheme consists of three colors, the original color and two neighbors of the complement color.



9DDCED



FDC4CA



ACDDC6

Square

The Square scheme is like the rectangle color scheme, but the four colors are evenly spaced on the color wheel.



FDC4CA



D9D4AA



9DDEDB



C7D1FA

Rectangle

The Rectangle color scheme consists of four colors that form a rectangle on the color wheel.



FDC4CA



F2CBAE



9DDED8



A6D9F6

Sweetspot

The Sweet Spot groups the original color and five complimentary colors.



FDC4CA



FFEDEF



F6C4FD



807576



000000



808080

Same Dimension

The Same Dimension uses a secret algorithm to generate beautiful new colors.



FDC4CA



FFBAC1



FDDAC4



807374



BF0014



400007

Inverse Universe

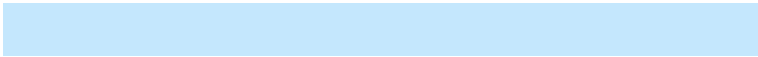
The Inverse Universe completely reimagines the original color for something new.



FDC4CA



FFBAC1



C4E7FD



807374



BF0014



400007

Previews

White Background



This preview shows how the Hex color FDC4CA looks on a white background.

Color Contrast Check

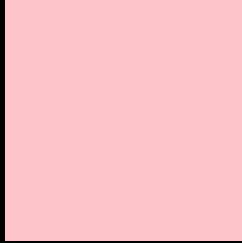
Large Text (above 18pt) WCAG AA × Fail

Any Text WCAG AA × Fail

Large Text (above 18pt) WCAG AAA × Fail

Any Text WCAG AAA × Fail

Black Background



This preview shows how the Hex color FDC4CA looks on a black background.

Color Contrast Check

Large Text (above 18pt) WCAG AA ✓ Pass

Any Text WCAG AA ✓ Pass

Large Text (above 18pt) WCAG AAA ✓ Pass

Any Text WCAG AAA ✓ Pass

If you want to check with other color combinations, try the [Color Contrast Checker](#).

Hex FDC4CA Background



This preview shows how black text looks on a background with the Hex color FDC4CA.

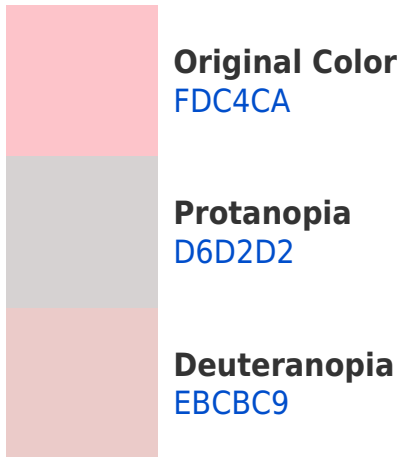


This preview shows how white text looks on a background with the Hex color FDC4CA.

Color Blindness Simulation

Color vision deficiency is a very complex topic, and I could not describe the different causes any better than Wikipedia does, so if you want to learn more, you should check out their [article about color blindness](#).

Dichromacy



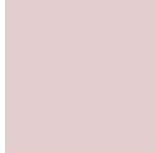


Tritanopia
FEC3D2

Trichromacy



Original Color
FDC4CA



Protanomaly
E4CDCF



Deuteranomaly
F2C8C9

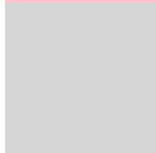


Tritanomaly
FEC3CF

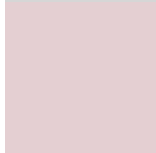
Monochromacy



Original Color
FDC4CA



Achromatopsia
D6D6D6



Achromatomaly
E4CFD2

CSS Examples

Text

The CSS property to change the color of the text to Hex FDC4CA is called "color". The color property can be set on classes, ids or directly on the HTML element.

This example shows how text in the color #FDC4CA looks like.

```
.text, #text, p{  
    color:#FDC4CA  
}
```

If you want to add a text shadow in that color use the text-shadow property, you can generate a text shadow directly with our [CSS Text Shadow Generator](#).

Here you see how black text with a 4 pixel #FDC4CA colored shadow looks like.

```
.shadow{ text-shadow: 4px 4px 2px #FDC4CA }  
}
```

Border

The CSS property to change the border of an element to Hex FDC4CA is called "border". The border property can be set on classes, ids or directly on the HTML element.

This example shows the color as border, it can be applied via the CSS property "border" or "border-color".

```
.border, #border, table{ border:4px solid #FDC4CA }  
}
```

If only the border color should be changed use the property `border-color`.

```
.border{ border-color:#FDC4CA }
```

If you want to add a box shadow in that color use:

Here you see how a box with a 4 pixel #FDC4CA colored shadow looks like.

```
.boxshadow{ -moz-box-shadow:4px 4px 4px  
4px #FDC4CA; -webkit-box-shadow:4px 4px  
4px 4px #FDC4CA; box-shadow:4px 4px 4px  
4px #FDC4CA }
```

Background

The CSS property to change the background color of an element to Hex FDC4CA is called "background". The background property can be set on classes, ids or directly on the HTML element.

```
.background, #background, body{  
background:#FDC4CA }
```

If only the background color should be changed can be used:

```
.background{ background-color:#FDC4CA }
```

This example shows the color as background, it is applied via the CSS property "background".

To optimize and compress your CSS code, you can use our [online CSS compressor and optimizer](#) based on csstidy. If you want to create a linear or radial gradient as background or border, check our [CSS Gradient Generator](#).

Hey! You found this booklet interesting? Support Converting Colors with the new Membership Option!

The pro membership hides all ads, plus gives you double the colors in the color bucket, and more awesome pro features!

[Learn more, Memberships starting at \\$2.50/m!](#)

**Follow me
on Twitter!**

@ConvertingColor