

Converting Colors

Hex(FDC5BC)

Have a look what the booklet for
Hex(FDC5BC) contains.

Hex(FDC5BC)	3
<i>Conversions</i>	4
<i>Details</i>	6
<i>Harmonies</i>	11
<i>Previews</i>	23
<i>Color Blindness Simulation</i>	26
<i>CSS Examples</i>	29

Color

Hex(FDC5BC)

Conversions

Conversions Part 1

Format	Color
Hex	FDC5BC
RGB	253, 197, 188
RGB Percent	99%, 77%, 74%
CMY	0.0078, 0.2275, 0.2627
CMYK	0.00, 0.22, 0.26, 0.01
HSL	8°, 94%, 86%
HSV	8°, 26%, 99%
XYZ	69.5514, 64.4460, 56.3505
YIQ	212.7180, 36.2650, 9.0730

Conversions

Conversions Part 2

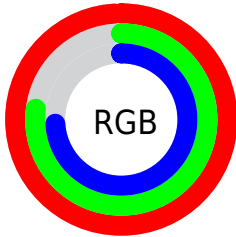
Format	Color
R _Y B	253, 198, 188
Decimal	16631228
CIE Lab	84.20, 18.68, 12.18
CIE LCh	84, 22.301, 33.104
Yxy	64.4460, 0.3654, 0.3386
Android (android.graphics.Color)	4294821308 (0xFFFD C5BC)
YUV	212.7180, -12.1860, 35.3273
Hunter-Lab	80.2783, 14.1616, 14.5768

Details

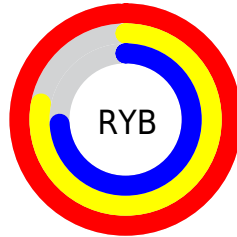
The Hex color **FDC5BC** is a light color, and the websafe version is hex **FFCCCC**. A complement of this color would be **BCF4FD**, and the grayscale version is **D5D5D5**.

A 20% lighter version of the original color is **FFFEF4**, and **C38F87** is the 20% darker color. If you saturate the color by 10%, you get **FDAFA3**, and if you desaturate by 10%, it is **FDDBD5**.

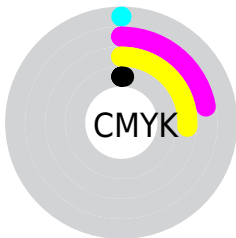
Distribution



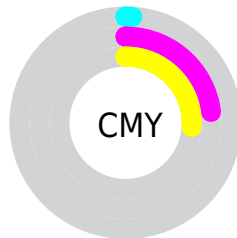
- Red (99%)
- Green (77%)
- Blue (74%)



- Red (99%)
- Yellow (78%)
- Blue (74%)



- Cyan (0%)
- Magenta (22%)
- Yellow (26%)
- Black (1%)



- Cyan (1%)
- Magenta (23%)
- Yellow (26%)

Brightness & Saturation Gradients

These gradients show how the Hex color FDC5BC changes by changing the brightness by 10 percent. The first figure shows a shift by +10% for each color and the second figure -10%.

Similar to the brightness gradients but the following saturation gradients show a change of the Hex color FDC5BC by changing the saturation by 10% instead.

 FDC5BC

FFFFFF

 FFFEF4

 FDC5BC

 E0AAA1

 C38F87

 A7756D

 8C5C55

 72453E

 582E28

 3F1814

 290000

 000000

 FDC5BC

 FDC5BC

 FDAFA3

 FDDBD5

 FD9989

 FDF1EF

 FD8470

FDFFFF

 FD6E57

 FD583E

 FD4224

 FD2C0B

 FD2300

Harmonies

Analogous

The Analogous color harmony consists of three colors that are next to each other on the color wheel.



FCC3D1



FDC5BC



F3CAAD

Triad

The Triadic color harmony groups three colors that are evenly spaced from another and form a triangle on the color wheel.



FDC5BC



B1DCBE



BDD3FC

Complementary

The Complementary color scheme is a pair of colors which are on the opposite of each other on the color wheel.



FDC5BC



BCF4FD

Split Complementary

Split-complementary colors differ from the complementary color scheme. The scheme consists of three colors, the original color and two neighbors of the complement color.



A4D9F7



FDC5BC



9FDED4

Square

The Square scheme is like the rectangle color scheme, but the four colors are evenly spaced on the color wheel.



FDC5BC



C9D8AF



99DDE8



D9CCF5

Rectangle

The Rectangle color scheme consists of four colors that form a rectangle on the color wheel.



FDC5BC



E7CFA9



99DDE8



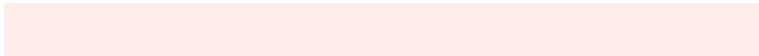
B4D5FB

Sweetspot

The Sweet Spot groups the original color and five complimentary colors.



FDC5BC



FFEDEB



FDBC F4



807573



000000



808080

Same Dimension

The Same Dimension uses a secret algorithm to generate beautiful new colors.



FDC5BC



FFBBB0



FDE5BC



807573



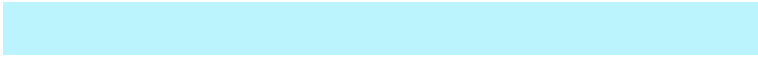
BF1A00



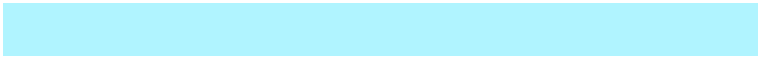
400900

Inverse Universe

The Inverse Universe completely reimagines the original color for something new.



BCF4FD



B0F4FF



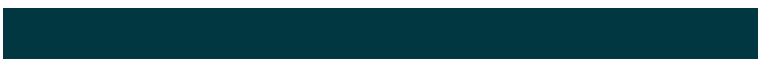
BCD4FD



737E80



00A5BF



003740

Previews

White Background



This preview shows how the Hex color FDC5BC looks on a white background.

Color Contrast Check

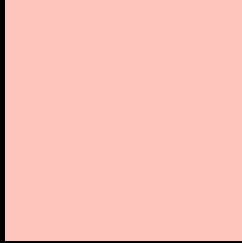
Large Text (above 18pt) WCAG AA × Fail

Any Text WCAG AA × Fail

Large Text (above 18pt) WCAG AAA × Fail

Any Text WCAG AAA × Fail

Black Background



This preview shows how the Hex color FDC5BC looks on a black background.

Color Contrast Check

Large Text (above 18pt) WCAG AA ✓ Pass

Any Text WCAG AA ✓ Pass

Large Text (above 18pt) WCAG AAA ✓ Pass

Any Text WCAG AAA ✓ Pass

If you want to check with other color combinations, try the [Color Contrast Checker](#).

Hex FDC5BC Background



This preview shows how black text looks on a background with the Hex color FDC5BC.

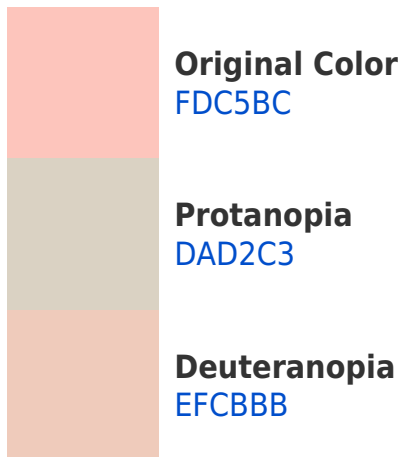


This preview shows how white text looks on a background with the Hex color FDC5BC.

Color Blindness Simulation

Color vision deficiency is a very complex topic, and I could not describe the different causes any better than Wikipedia does, so if you want to learn more, you should check out their [article about color blindness](#).

Dichromacy



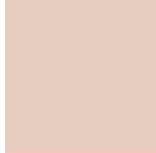


Tritanopia
FFC2D1

Trichromacy



Original Color
FDC5BC



Protanomaly
E7CDC0



Deuteranomaly
F4C9BB

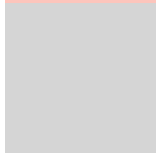


Tritanomaly
FEC3C9

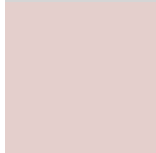
Monochromacy



Original Color
FDC5BC



Achromatopsia
D5D5D5



Achromatomaly
E4CFCC

CSS Examples

Text

The CSS property to change the color of the text to Hex FDC5BC is called "color". The color property can be set on classes, ids or directly on the HTML element.

This example shows how text in the color #FDC5BC looks like.

```
.text, #text, p{  
    color:#FDC5BC  
}
```

If you want to add a text shadow in that color use the text-shadow property, you can generate a text shadow directly with our [CSS Text Shadow Generator](#).

Here you see how black text with a 4 pixel #FDC5BC colored shadow looks like.

```
.shadow{ text-shadow: 4px 4px 2px #FDC5BC  
}
```

Border

The CSS property to change the border of an element to Hex FDC5BC is called "border". The border property can be set on classes, ids or directly on the HTML element.

This example shows the color as border, it can be applied via the CSS property "border" or "border-color".

```
.border, #border, table{ border:4px solid  
#FDC5BC }
```

If only the border color should be changed use the property `border-color`.

```
.border{ border-color:#FDC5BC }
```

If you want to add a box shadow in that color use:

Here you see how a box with a 4 pixel #FDC5BC colored shadow looks like.

```
.boxshadow{ -moz-box-shadow:4px 4px 4px  
4px #FDC5BC; -webkit-box-shadow:4px 4px  
4px 4px #FDC5BC; box-shadow:4px 4px 4px  
4px #FDC5BC }
```

Background

The CSS property to change the background color of an element to Hex FDC5BC is called "background". The background property can be set on classes, ids or directly on the HTML element.

```
.background, #background, body{  
background:#FDC5BC }
```

If only the background color should be changed can be used:

```
.background{ background-color:#FDC5BC }
```

This example shows the color as background, it is applied via the CSS property "background".

To optimize and compress your CSS code, you can use our [online CSS compressor and optimizer](#) based on csstidy. If you want to create a linear or radial gradient as background or border, check our [CSS Gradient Generator](#).

Hey! You found this booklet interesting? Support Converting Colors with the new Membership Option!

The pro membership hides all ads, plus gives you double the colors in the color bucket, and more awesome pro features!

[Learn more, Memberships starting at \\$2.50/m!](#)

**Follow me
on Twitter!**

@ConvertingColor