

Converting Colors

Hex(FE326C)

Have a look what the booklet for
Hex(FE326C) contains.

Hex(FE326C)	3
<i>Conversions</i>	4
<i>Details</i>	6
<i>Harmonies</i>	11
<i>Previews</i>	23
<i>Color Blindness Simulation</i>	26
<i>CSS Examples</i>	29

Color

Hex(FE326C)

Conversions

Conversions Part 1

Format	Color
Hex	FE326C
RGB	254, 50, 108
RGB Percent	100%, 20%, 42%
CMY	0.0039, 0.8039, 0.5765
CMYK	0.00, 0.80, 0.57, 0.00
HSL	343°, 99%, 60%
HSV	343°, 80%, 100%
XYZ	44.7204, 24.4347, 16.5467
YIQ	117.6080, 102.9660, 61.2860

Conversions

Conversions Part 2

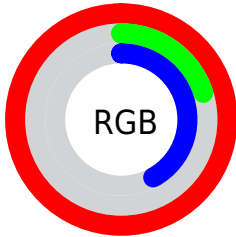
Format	Color
R_{YB}	254, 50, 108
Decimal	16659052
CIE _{Lab}	56.52, 76.30, 18.31
CIE _{LCh}	57, 78.466, 13.492
Yxy	24.4347, 0.5218, 0.2851
Android (android.graphics.Color)	4294849132 (0xFFFE326C)
YUV	117.6080, -4.7367, 119.6158
Hunter-Lab	49.4315, 74.9829, 14.7553

Details

The Hex color **FE326C** is a dark color, and the websafe version is hex **FF3366**. The color can be described as middle washed rose. A complement of this color would be **32FEC4**, and the grayscale version is **767676**.

A 20% lighter version of the original color is **FF759F**, and **BE003D** is the 20% darker color. If you saturate the color by 10%, you get **FE195A**, and if you desaturate by 10%, it is **FE4B7E**.

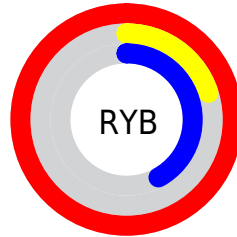
Distribution



Red (100%)

Green (20%)

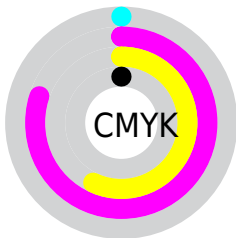
Blue (42%)



Red (100%)

Yellow (20%)

Blue (42%)

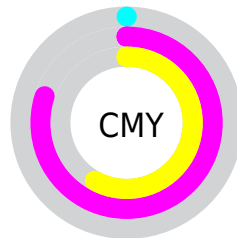


Cyan (0%)

Magenta (80%)

Yellow (57%)

Black (0%)



Cyan (0%)

Magenta (80%)

Yellow (58%)

Brightness & Saturation Gradients

These gradients show how the Hex color FE326C changes by changing the brightness by 10 percent. The first figure shows a shift by +10% for each color and the second figure -10%.

Similar to the brightness gradients but the following saturation gradients show a change of the Hex color FE326C by changing the saturation by 10% instead.

 FE326C

 FE326C

FFFFFF

 DE0054

 FF759F

 BE003D

 FF93BA

 9E0028

 FFB1D6

 7F0015

 FFCFF2

 600002

 FFEDFF

 420003

 200001

 000000

 FE326C

 FE326C

 FE195A

 FE4B7E

 FE0048

 FE6590

 FE7EA3

 FE98B5

 FEB1C7

 FECAD9

 FEE4EB

 FEFDFD

FEFFFF

Harmonies

Analogous

The Analogous color harmony consists of three colors that are next to each other on the color wheel.



ED3DB0



FE326C



ED542A

Triad

The Triadic color harmony groups three colors that are evenly spaced from another and form a triangle on the color wheel.



FE326C



309C0A



009AFF

Complementary

The Complementary color scheme is a pair of colors which are on the opposite of each other on the color wheel.



FE326C



32FEC4

Split Complementary

Split-complementary colors differ from the complementary color scheme. The scheme consists of three colors, the original color and two neighbors of the complement color.



00A3E5



FE326C



00A35E

Square

The Square scheme is like the rectangle color scheme, but the four colors are evenly spaced on the color wheel.



FE326C



888E00



00A5A6



0086FF

Rectangle

The Rectangle color scheme consists of four colors that form a rectangle on the color wheel.



FE326C



D36C00



00A5A6



009EFF

Sweetspot

The Sweet Spot groups the original color and five complimentary colors.



FE326C



FFC2D3



C132FE



805B65



000000



808080

Same Dimension

The Same Dimension uses a secret algorithm to generate beautiful new colors.



FE326C



FF0A50



FE5B32



807376



BF0036



400012

Inverse Universe

The Inverse Universe completely reimagines the original color for something new.



FE326C



FF0A50



32D5FE



807376



BF0036



400012

Previews

White Background



This preview shows how the Hex color FE326C looks on a white background.

Color Contrast Check

Large Text (above 18pt) WCAG AA ✓ Pass

Any Text WCAG AA × Fail

Large Text (above 18pt) WCAG AAA × Fail

Any Text WCAG AAA × Fail

Black Background



Color Contrast Check

Large Text (above 18pt) WCAG AA ✓ Pass

Any Text WCAG AA ✓ Pass

Large Text (above 18pt) WCAG AAA ✓ Pass

Any Text WCAG AAA × Fail

If you want to check with other color combinations, try the [Color Contrast Checker](#).

Hex FE326C Background



This preview shows how black text looks on a background with the Hex color FE326C.

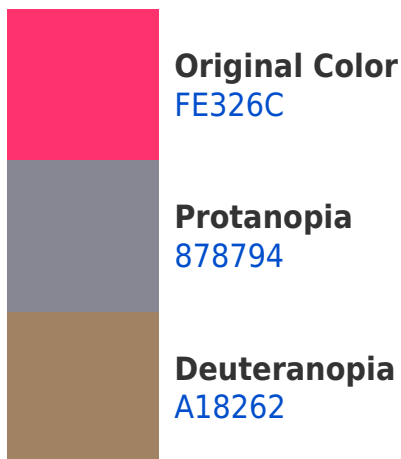


This preview shows how white text looks on a background with the Hex color FE326C.

Color Blindness Simulation

Color vision deficiency is a very complex topic, and I could not describe the different causes any better than Wikipedia does, so if you want to learn more, you should check out their [article about color blindness](#).

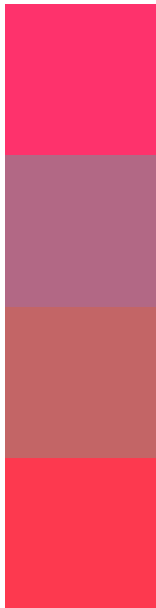
Dichromacy





Tritanopia
FC3D3F

Trichromacy



Original Color
FE326C

Protanomaly
B26885

Deuteranomaly
C36566

Tritanomaly
FD394F

Monochromacy



Original Color
FE326C

Achromatopsia
767676

Achromatomaly
A75D72

CSS Examples

Text

The CSS property to change the color of the text to Hex FE326C is called "color". The color property can be set on classes, ids or directly on the HTML element.

This example shows how text in the color #FE326C looks like.

```
.text, #text, p{  
    color:#FE326C  
}
```

If you want to add a text shadow in that color use the text-shadow property, you can generate a text shadow directly with our [CSS Text Shadow Generator](#).

Here you see how black text with a 4 pixel #FE326C colored shadow looks like.

```
.shadow{ text-shadow: 4px 4px 2px #FE326C
}
```

Border

The CSS property to change the border of an element to Hex FE326C is called "border". The border property can be set on classes, ids or directly on the HTML element.

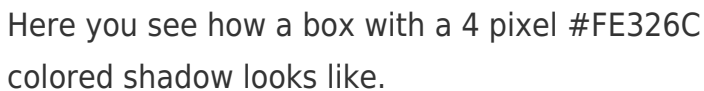
This example shows the color as border, it can be applied via the CSS property "border" or "border-color".

```
.border, #border, table{ border:4px solid
#FE326C }
```

If only the border color should be changed use the property `border-color`.

```
.border{ border-color:#FE326C }
```

If you want to add a box shadow in that color use:



Here you see how a box with a 4 pixel `#FE326C` colored shadow looks like.

```
.boxshadow{ -moz-box-shadow:4px 4px 4px  
4px #FE326C; -webkit-box-shadow:4px 4px  
4px 4px #FE326C; box-shadow:4px 4px 4px  
4px #FE326C }
```

Background

The CSS property to change the background color of an element to Hex FE326C is called "background". The background property can be set on classes, ids or directly on the HTML element.

```
.background, #background, body{  
background:#FE326C }
```

If only the background color should be changed can be used:

```
.background{ background-color:#FE326C }
```

This example shows the color as background, it is applied via the CSS property "background".

To optimize and compress your CSS code, you can use our [online CSS compressor and optimizer](#) based on csstidy. If you want to create a linear or radial gradient as background or border, check our [CSS Gradient Generator](#).

Hey! You found this booklet interesting? Support Converting Colors with the new Membership Option!

The pro membership hides all ads, plus gives you double the colors in the color bucket, and more awesome pro features!

[Learn more, Memberships starting at \\$2.50/m!](#)

**Follow me
on Twitter!**

@ConvertingColor