

Converting Colors

Hex(FE4578)

Have a look what the booklet for
Hex(FE4578) contains.

Hex(FE4578)	3
<i>Conversions</i>	4
<i>Details</i>	6
<i>Harmonies</i>	11
<i>Previews</i>	23
<i>Color Blindness Simulation</i>	26
<i>CSS Examples</i>	29

Color

Hex(FE4578)

Conversions

Conversions Part 1

Format	Color
Hex	FE4578
RGB	254, 69, 120
RGB Percent	100%, 27%, 47%
CMY	0.0039, 0.7294, 0.5294
CMYK	0.00, 0.73, 0.53, 0.00
HSL	343°, 99%, 63%
HSV	343°, 73%, 100%
XYZ	46.3913, 26.6831, 20.4746
YIQ	130.1290, 93.8890, 55.0810

Conversions

Conversions Part 2

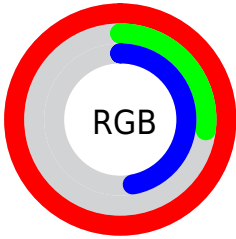
Format	Color
R_{YB}	254, 69, 120
Decimal	16663928
CIE _{Lab}	58.68, 71.78, 14.18
CIE _{LCh}	59, 73.164, 11.173
Yxy	26.6831, 0.4959, 0.2852
Android (android.graphics.Color)	4294854008 (0xFFFE4578)
YUV	130.1290, -4.9936, 108.6349
Hunter-Lab	51.6557, 69.9110, 12.6585

Details

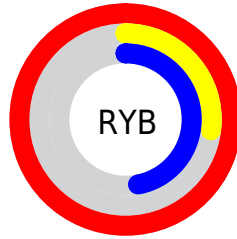
The Hex color **FE4578** is a dark color, and the websafe version is hex **FF3366**. The color can be described as middle washed rose. A complement of this color would be **45FECB**, and the grayscale version is **828282**.

A 20% lighter version of the original color is **FF82AC**, and **BF0048** is the 20% darker color. If you saturate the color by 10%, you get **FE2C66**, and if you desaturate by 10%, it is **FE5E8A**.

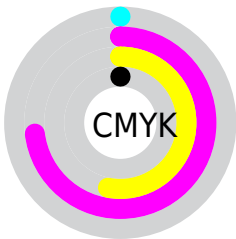
Distribution



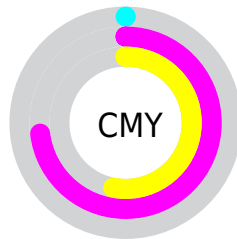
- Red (100%)
- Green (27%)
- Blue (47%)



- Red (100%)
- Yellow (27%)
- Blue (47%)



- Cyan (0%)
- Magenta (73%)
- Yellow (53%)
- Black (0%)



- Cyan (0%)
- Magenta (73%)
- Yellow (53%)

Brightness & Saturation Gradients

These gradients show how the Hex color FE4578 changes by changing the brightness by 10 percent. The first figure shows a shift by +10% for each color and the second figure -10%.

Similar to the brightness gradients but the following saturation gradients show a change of the Hex color FE4578 by changing the saturation by 10% instead.

 FE4578

 FE4578

FFFFFF

 DE1E5F

 FF82AC

 BF0048

 FFA0C7

 A00032

 FFBDE3

 81001E

 FFDBFF

 630003

 FFF9FF

 460003

 250001

 000000

 FE4578

 FE4578

 FE2C66

 FE5E8A

 FE1253

 FE789D

 FE0046

 FE91AF

 FEABC2

 FEC4D4

 FEDDE6

 FEF7F9

FEFFFF

Harmonies

Analogous

The Analogous color harmony consists of three colors that are next to each other on the color wheel.



EA50B8



FE4578



F05D3B

Triad

The Triadic color harmony groups three colors that are evenly spaced from another and form a triangle on the color wheel.



FE4578



4AA01C



009FFF

Complementary

The Complementary color scheme is a pair of colors which are on the opposite of each other on the color wheel.



FE4578



45FECB

Split Complementary

Split-complementary colors differ from the complementary color scheme. The scheme consists of three colors, the original color and two neighbors of the complement color.



00A8E1



FE4578



00A761

Square

The Square scheme is like the rectangle color scheme, but the four colors are evenly spaced on the color wheel.



FE4578



949200



00AAA4



008DFF

Rectangle

The Rectangle color scheme consists of four colors that form a rectangle on the color wheel.



FE4578



D9710C



00AAA4



00A3FE

Sweetspot

The Sweet Spot groups the original color and five complimentary colors.



FE4578



FFC7D6



CA45FE



805E67



000000



808080

Same Dimension

The Same Dimension uses a secret algorithm to generate beautiful new colors.



FE4578



FF215E



FE6D45



807376



BF0035



400012

Inverse Universe

The Inverse Universe completely reimagines the original color for something new.



FE4578



FF215E



45D6FE



807376



BF0035



400012

Previews

White Background



This preview shows how the Hex color FE4578 looks on a white background.

Color Contrast Check

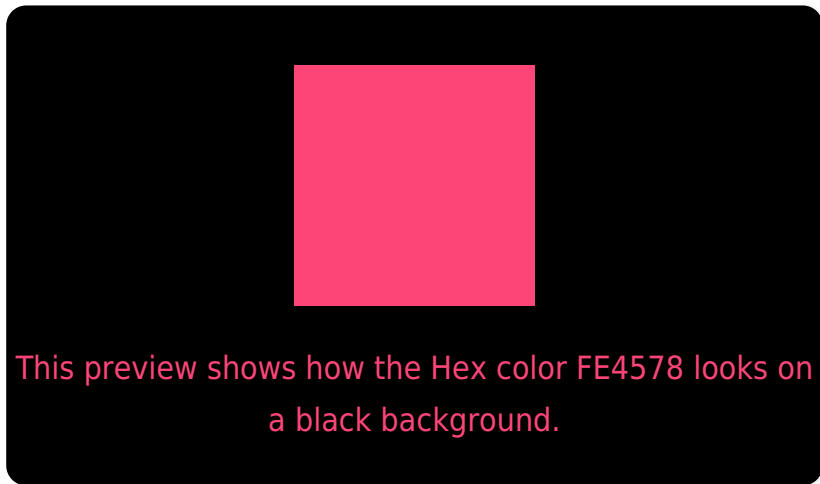
Large Text (above 18pt) WCAG AA ✓ Pass

Any Text WCAG AA ✗ Fail

Large Text (above 18pt) WCAG AAA ✗ Fail

Any Text WCAG AAA ✗ Fail

Black Background



Color Contrast Check

Large Text (above 18pt) WCAG AA ✓ Pass

Any Text WCAG AA ✓ Pass

Large Text (above 18pt) WCAG AAA ✓ Pass

Any Text WCAG AAA × Fail

If you want to check with other color combinations, try the [Color Contrast Checker](#).

Hex FE4578 Background



This preview shows how black text looks on a background with the Hex color FE4578.

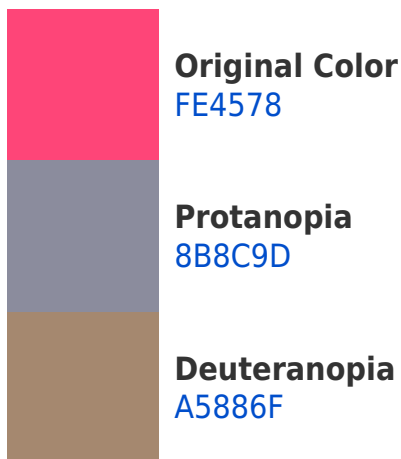


This preview shows how white text looks on a background with the Hex color FE4578.

Color Blindness Simulation

Color vision deficiency is a very complex topic, and I could not describe the different causes any better than Wikipedia does, so if you want to learn more, you should check out their [article about color blindness](#).

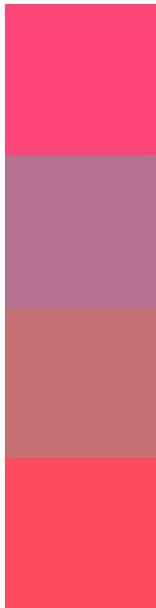
Dichromacy





Tritanopia
FC4E51

Trichromacy



Original Color
FE4578

Protanomaly
B57290

Deuteranomaly
C57072

Tritanomaly
FD4B5F

Monochromacy



Original Color
FE4578

Achromatopsia
828282

Achromatomaly
AF6C7E

CSS Examples

Text

The CSS property to change the color of the text to Hex FE4578 is called "color". The color property can be set on classes, ids or directly on the HTML element.

This example shows how text in the color #FE4578 looks like.

```
.text, #text, p{  
    color:#FE4578  
}
```

If you want to add a text shadow in that color use the text-shadow property, you can generate a text shadow directly with our [CSS Text Shadow Generator](#).

Here you see how black text with a 4 pixel #FE4578 colored shadow looks like.

```
.shadow{ text-shadow: 4px 4px 2px #FE4578
}
```

Border

The CSS property to change the border of an element to Hex FE4578 is called "border". The border property can be set on classes, ids or directly on the HTML element.

This example shows the color as border, it can be applied via the CSS property "border" or "border-color".

```
.border, #border, table{ border:4px solid
#FE4578 }
```

If only the border color should be changed use the property `border-color`.

```
.border{ border-color:#FE4578 }
```

If you want to add a box shadow in that color use:

Here you see how a box with a 4 pixel #FE4578 colored shadow looks like.

```
.boxshadow{ -moz-box-shadow:4px 4px 4px  
4px #FE4578; -webkit-box-shadow:4px 4px  
4px 4px #FE4578; box-shadow:4px 4px 4px  
4px #FE4578 }
```

Background

The CSS property to change the background color of an element to Hex FE4578 is called "background". The background property can be set on classes, ids or directly on the HTML element.

```
.background, #background, body{  
background:#FE4578 }
```

If only the background color should be changed can be used:

```
.background{ background-color:#FE4578 }
```

This example shows the color as background, it is applied via the CSS property "background".

To optimize and compress your CSS code, you can use our [online CSS compressor and optimizer](#) based on csstidy. If you want to create a linear or radial gradient as background or border, check our [CSS Gradient Generator](#).

Hey! You found this booklet interesting? Support Converting Colors with the new Membership Option!

The pro membership hides all ads, plus gives you double the colors in the color bucket, and more awesome pro features!

[Learn more, Memberships starting at \\$2.50/m!](#)

**Follow me
on Twitter!**

@ConvertingColor