

# Converting Colors

Hex(FE4C80)

Have a look what the booklet for  
Hex(FE4C80) contains.

|  |    |
|--|----|
| <b>Hex(FE4C80)</b> .....                       | 3  |
| <i><b>Conversions</b></i> .....                | 4  |
| <i><b>Details</b></i> .....                    | 6  |
| <i><b>Harmonies</b></i> .....                  | 11 |
| <i><b>Previews</b></i> .....                   | 23 |
| <i><b>Color Blindness Simulation</b></i> ..... | 26 |
| <i><b>CSS Examples</b></i> .....               | 29 |

# Color

**Hex(FE4C80)**

# Conversions

## Conversions Part 1

| Format      | Color                      |
|-------------|----------------------------|
| Hex         | FE4C80                     |
| RGB         | 254, 76, 128               |
| RGB Percent | 100%, 30%, 50%             |
| CMY         | 0.0039, 0.7020, 0.4980     |
| CMYK        | 0.00, 0.70, 0.50, 0.00     |
| HSL         | 342°, 99%, 65%             |
| HSV         | 342°, 70%, 100%            |
| XYZ         | 47.3538, 27.7982, 23.2918  |
| YIQ         | 135.1500, 89.3960, 53.9080 |

# Conversions

## Conversions Part 2

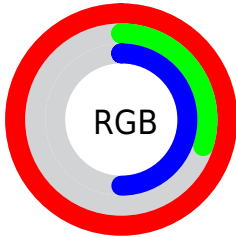
| <b>Format</b>                       | <b>Color</b>                   |
|-------------------------------------|--------------------------------|
| <b>R<sub>YB</sub></b>               | 254, 76, 128                   |
| Decimal                             | 16665728                       |
| CIE <sub>Lab</sub>                  | 59.71, 70.06, 10.91            |
| CIE <sub>LCh</sub>                  | 60, 70.903, 8.855              |
| Yxy                                 | 27.7982, 0.4810,<br>0.2824     |
| Android<br>(android.graphics.Color) | 4294855808<br>(0xFFFE4C80)     |
| YUV                                 | 135.1500, -3.5250,<br>104.2314 |
| Hunter-Lab                          | 52.7240, 68.0517,<br>10.7143   |

# Details

The Hex color **FE4C80** is a light color, and the websafe version is hex **FF6699**. The color can be described as light washed rose. A complement of this color would be **4CFECA**, and the grayscale version is **878787**.

A 20% lighter version of the original color is **FF88B5**, and **BF004F** is the 20% darker color. If you saturate the color by 10%, you get **FE336E**, and if you desaturate by 10%, it is **FE6592**.

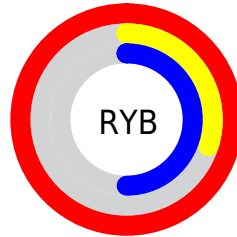
# Distribution



Red (100%)

Green (30%)

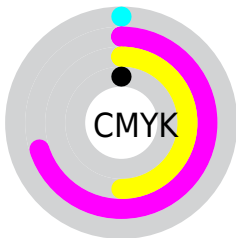
Blue (50%)



Red (100%)

Yellow (30%)

Blue (50%)

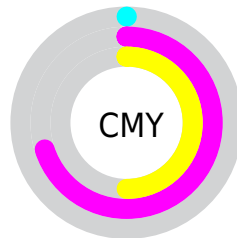


Cyan (0%)

Magenta (70%)

Yellow (50%)

Black (0%)



Cyan (0%)

Magenta (70%)

Yellow (50%)

# Brightness & Saturation Gradients

These gradients show how the Hex color FE4C80 changes by changing the brightness by 10 percent. The first figure shows a shift by +10% for each color and the second figure -10%.

Similar to the brightness gradients but the following saturation gradients show a change of the Hex color FE4C80 by changing the saturation by 10% instead.



 FE4C80

 FE4C80

FFFFFF

 DF2967

 FF88B5

 BF004F

 FFA5D0

 A10039

 FFC3EC

 820024

 FFE0FF

 64000F

 480004

 270001

 000000

 FE4C80

 FE4C80

 FE336E

 FE6592

 FE195C

 FE7FA4

 FE004A

 FE98B6

 FEB2C8

 FECBDA

 FEE4EC

FEFEFE

FEFFFF

# Harmonies

## Analogous

The Analogous color harmony consists of three colors that are next to each other on the color wheel.



E858BE



FE4C80



F36044

# Triad

The Triadic color harmony groups three colors that are evenly spaced from another and form a triangle on the color wheel.



FE4C80



57A220



00A3FF

# Complementary

The Complementary color scheme is a pair of colors which are on the opposite of each other on the color wheel.



FE4C80



4CFECA

# Split Complementary

Split-complementary colors differ from the complementary color scheme. The scheme consists of three colors, the original color and two neighbors of the complement color.



00ABDD



FE4C80



00A960

# Square

The Square scheme is like the rectangle color scheme, but the four colors are evenly spaced on the color wheel.



FE4C80



9C9300



00ACA1



0091FF

# Rectangle

The Rectangle color scheme consists of four colors that form a rectangle on the color wheel.



FE4C80



DE731D



00ACA1



00A6FA



# Sweetspot

The Sweet Spot groups the original color and five complimentary colors.



FE4C80



FFC9D9



C94CFE



806069



000000



808080



# Same Dimension

The Same Dimension uses a secret algorithm to generate beautiful new colors.



FE4C80



FF2967



FE704C



807376



BF0038



400013



# Inverse Universe

The Inverse Universe completely reimagines the original color for something new.



FE4C80



FF2967



4CDAFE



807376



BF0038



400013



# Previews

## White Background



This preview shows how the Hex color FE4C80 looks on a white background.

## Color Contrast Check

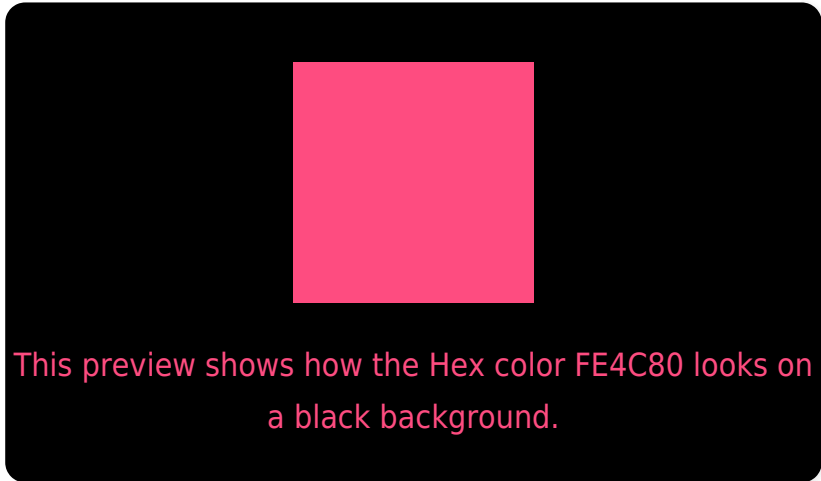
Large Text (above 18pt) WCAG AA ✓ Pass

Any Text WCAG AA × Fail

Large Text (above 18pt) WCAG AAA × Fail

Any Text WCAG AAA × Fail

# Black Background



## Color Contrast Check

Large Text (above 18pt) WCAG AA ✓ Pass

Any Text WCAG AA ✓ Pass

Large Text (above 18pt) WCAG AAA ✓ Pass

Any Text WCAG AAA × Fail

If you want to check with other color combinations, try the [Color Contrast Checker](#).



## Hex FE4C80 Background



This preview shows how black text looks on a background with the Hex color FE4C80.



This preview shows how white text looks on a background with the Hex color FE4C80.

# Color Blindness Simulation

Color vision deficiency is a very complex topic, and I could not describe the different causes any better than Wikipedia does, so if you want to learn more, you should check out their [article about color blindness](#).

## Dichromacy



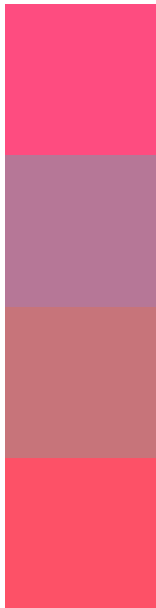
**Original Color**  
FE4C80

**Protanopia**  
8D8FA4

**Deuteranopia**  
A78B77



# Trichromacy



**Original Color**  
FE4C80

**Protanomaly**  
B67797

**Deuteranomaly**  
C7747A

**Tritanomaly**  
FD5167

# Monochromacy



**Original Color**  
FE4C80

**Achromatopsia**  
878787

**Achromatomaly**  
B27284

# CSS Examples

## Text

The CSS property to change the color of the text to Hex FE4C80 is called "color". The color property can be set on classes, ids or directly on the HTML element.

This example shows how text in the color #FE4C80 looks like.

```
.text, #text, p{  
    color:#FE4C80  
}
```

If you want to add a text shadow in that color use the text-shadow property, you can generate a text shadow directly with our [CSS Text Shadow Generator](#).

Here you see how black text with a 4 pixel #FE4C80 colored shadow looks like.

```
.shadow{ text-shadow: 4px 4px 2px #FE4C80
}
```

## Border

The CSS property to change the border of an element to Hex FE4C80 is called "border". The border property can be set on classes, ids or directly on the HTML element.

This example shows the color as border, it can be applied via the CSS property "border" or "border-color".

```
.border, #border, table{ border:4px solid
#FE4C80 }
```

If only the border color should be changed use the property `border-color`.

```
.border{ border-color:#FE4C80 }
```

If you want to add a box shadow in that color use:

Here you see how a box with a 4 pixel #FE4C80 colored shadow looks like.

```
.boxshadow{ -moz-box-shadow:4px 4px 4px  
4px #FE4C80; -webkit-box-shadow:4px 4px  
4px 4px #FE4C80; box-shadow:4px 4px 4px  
4px #FE4C80 }
```

# Background

The CSS property to change the background color of an element to Hex FE4C80 is called "background". The background property can be set on classes, ids or directly on the HTML element.

```
.background, #background, body{  
background:#FE4C80 }
```

If only the background color should be changed can be used:

```
.background{ background-color:#FE4C80 }
```

This example shows the color as background, it is applied via the CSS property "background".

To optimize and compress your CSS code, you can use our [online CSS compressor and optimizer](#) based on csstidy. If you want to create a linear or radial gradient as background or border, check our [CSS Gradient Generator](#).



Hey! You found this booklet interesting? Support Converting Colors with the new Membership Option!

The pro membership hides all ads, plus gives you double the colors in the color bucket, and more awesome pro features!

**[Learn more, Memberships starting at \\$2.50/m!](#)**

**Follow me  
on Twitter!**

@ConvertingColor