

Converting Colors

Hex(FE5A81)

Have a look what the booklet for
Hex(FE5A81) contains.

Hex(FE5A81)	3
<i>Conversions</i>	4
<i>Details</i>	6
<i>Harmonies</i>	11
<i>Previews</i>	23
<i>Color Blindness Simulation</i>	26
<i>CSS Examples</i>	29

Color

Hex(FE5A81)

Conversions

Conversions Part 1

Format	Color
Hex	FE5A81
RGB	254, 90, 129
RGB Percent	100%, 35%, 51%
CMY	0.0039, 0.6471, 0.4941
CMYK	0.00, 0.65, 0.49, 0.00
HSL	346°, 99%, 67%
HSV	346°, 65%, 100%
XYZ	48.4917, 29.9681, 23.9975
YIQ	143.4820, 85.2250, 46.8970

Conversions

Conversions Part 2

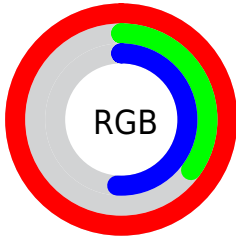
Format	Color
R_{YB}	254, 90, 129
Decimal	16669313
CIE _{Lab}	61.63, 64.93, 13.03
CIE _{LCh}	62, 66.224, 11.348
Yxy	29.9681, 0.4733, 0.2925
Android (android.graphics.Color)	4294859393 (0xFFFE5A81)
YUV	143.4820, -7.1396, 96.9243
Hunter-Lab	54.7432, 62.3153, 12.3295

Details

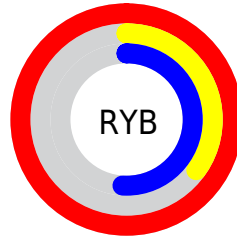
The Hex color **FE5A81** is a light color, and the websafe version is hex **FF6699**. The color can be described as light muted rose. A complement of this color would be **5AFED7**, and the grayscale version is **8F8F8F**.

A 20% lighter version of the original color is **FF94B6**, and **C01450** is the 20% darker color. If you saturate the color by 10%, you get **FE416E**, and if you desaturate by 10%, it is **FE7394**.

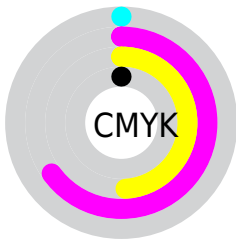
Distribution



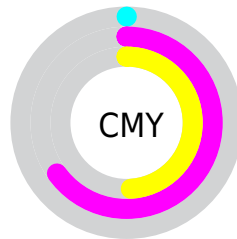
- Red (100%)
- Green (35%)
- Blue (51%)



- Red (100%)
- Yellow (35%)
- Blue (51%)



- Cyan (0%)
- Magenta (65%)
- Yellow (49%)
- Black (0%)



- Cyan (0%)
- Magenta (65%)
- Yellow (49%)

Brightness & Saturation Gradients

These gradients show how the Hex color FE5A81 changes by changing the brightness by 10 percent. The first figure shows a shift by +10% for each color and the second figure -10%.

Similar to the brightness gradients but the following saturation gradients show a change of the Hex color FE5A81 by changing the saturation by 10% instead.

 FE5A81

 FE5A81

FFFFFF

 DF3B68

 FF94B6

 C01450

 FFB1D1

 A1003A

 FFCEED

 830024

 FFE8FF

 650010

 490003

 2A0001

 000000

 FE5A81

 FE5A81

 FE416E

 FE7394

 FE275A

 FE8DA8

 FE0E47

 FEA6BB

 FE003C

 FEC0CE

 FED9E2

 FEF2F5

FEFFFF

Harmonies

Analogous

The Analogous color harmony consists of three colors that are next to each other on the color wheel.



EB62BC



FE5A81



F26B4A

Triad

The Triadic color harmony groups three colors that are evenly spaced from another and form a triangle on the color wheel.



FE5A81



5BA734



00A5FF

Complementary

The Complementary color scheme is a pair of colors which are on the opposite of each other on the color wheel.



FE5A81



5AFED7

Split Complementary

Split-complementary colors differ from the complementary color scheme. The scheme consists of three colors, the original color and two neighbors of the complement color.



00AEE1



FE5A81



00AE6D

Square

The Square scheme is like the rectangle color scheme, but the four colors are evenly spaced on the color wheel.



FE5A81



9D9900



00B0AA



3994FF

Rectangle

The Rectangle color scheme consists of four colors that form a rectangle on the color wheel.



FE5A81



DD7C29



00B0AA



00A9FB

Sweetspot

The Sweet Spot groups the original color and five complimentary colors.



FE5A81



FFCFDA



D55AFE



806269



000000



808080

Same Dimension

The Same Dimension uses a secret algorithm to generate beautiful new colors.



FE5A81



FF3B69



FE835A



807376



BF002D



40000F

Inverse Universe

The Inverse Universe completely reimagines the original color for something new.



FE5A81



FF3B69



5AD5FE



807376



BF002D



40000F

Previews

White Background



This preview shows how the Hex color FE5A81 looks on a white background.

Color Contrast Check

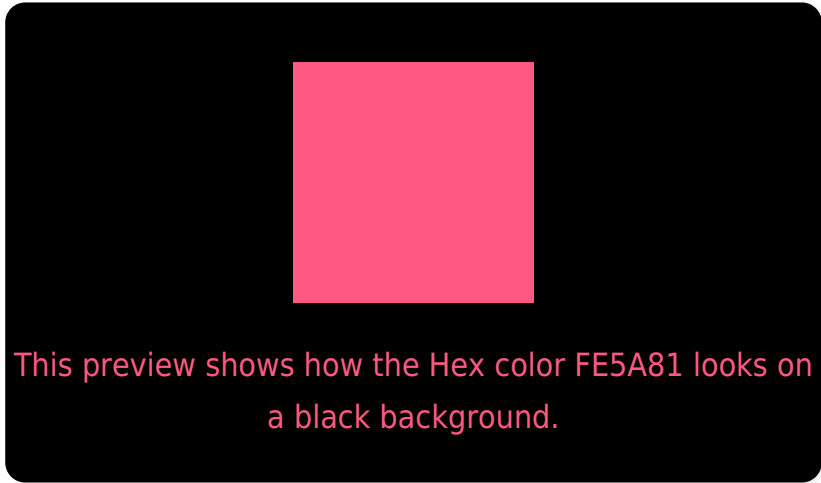
Large Text (above 18pt) WCAG AA ✓ Pass

Any Text WCAG AA × Fail

Large Text (above 18pt) WCAG AAA × Fail

Any Text WCAG AAA × Fail

Black Background



Color Contrast Check

Large Text (above 18pt) WCAG AA ✓ Pass

Any Text WCAG AA ✓ Pass

Large Text (above 18pt) WCAG AAA ✓ Pass

Any Text WCAG AAA × Fail

If you want to check with other color combinations, try the [Color Contrast Checker](#).

Hex FE5A81 Background



This preview shows how black text looks on a background with the Hex color FE5A81.



This preview shows how white text looks on a background with the Hex color FE5A81.

Color Blindness Simulation

Color vision deficiency is a very complex topic, and I could not describe the different causes any better than Wikipedia does, so if you want to learn more, you should check out their [article about color blindness](#).

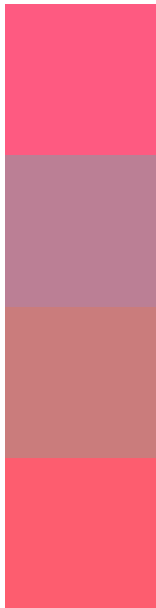
Dichromacy





Tritanopia
FC5F65

Trichromacy



Original Color
FE5A81

Protanomaly
BB7F95

Deuteranomaly
CA7C7C

Tritanomaly
FD5D6F

Monochromacy



Original Color
FE5A81

Achromatopsia
8F8F8F

Achromatomaly
B77C8A

CSS Examples

Text

The CSS property to change the color of the text to Hex FE5A81 is called "color". The color property can be set on classes, ids or directly on the HTML element.

This example shows how text in the color #FE5A81 looks like.

```
.text, #text, p{  
    color:#FE5A81  
}
```

If you want to add a text shadow in that color use the text-shadow property, you can generate a text shadow directly with our [CSS Text Shadow Generator](#).

Here you see how black text with a 4 pixel #FE5A81 colored shadow looks like.

```
.shadow{ text-shadow: 4px 4px 2px #FE5A81
}
```

Border

The CSS property to change the border of an element to Hex FE5A81 is called "border". The border property can be set on classes, ids or directly on the HTML element.

This example shows the color as border, it can be applied via the CSS property "border" or "border-color".

```
.border, #border, table{ border:4px solid
#FE5A81 }
```

If only the border color should be changed use the property `border-color`.

```
.border{ border-color:#FE5A81 }
```

If you want to add a box shadow in that color use:

Here you see how a box with a 4 pixel #FE5A81 colored shadow looks like.

```
.boxshadow{ -moz-box-shadow:4px 4px 4px  
4px #FE5A81; -webkit-box-shadow:4px 4px  
4px 4px #FE5A81; box-shadow:4px 4px 4px  
4px #FE5A81 }
```

Background

The CSS property to change the background color of an element to Hex FE5A81 is called "background". The background property can be set on classes, ids or directly on the HTML element.

```
.background, #background, body{  
background:#FE5A81 }
```

If only the background color should be changed can be used:

```
.background{ background-color:#FE5A81 }
```

This example shows the color as background, it is applied via the CSS property "background".

To optimize and compress your CSS code, you can use our [online CSS compressor and optimizer](#) based on csstidy. If you want to create a linear or radial gradient as background or border, check our [CSS Gradient Generator](#).

Hey! You found this booklet interesting? Support Converting Colors with the new Membership Option!

The pro membership hides all ads, plus gives you double the colors in the color bucket, and more awesome pro features!

[Learn more, Memberships starting at \\$2.50/m!](#)

**Follow me
on Twitter!**

@ConvertingColor