

Converting Colors

Hex(FE726F)

Have a look what the booklet for
Hex(FE726F) contains.

Hex(FE726F)	3
<i>Conversions</i>	4
<i>Details</i>	6
<i>Harmonies</i>	11
<i>Previews</i>	23
<i>Color Blindness Simulation</i>	26
<i>CSS Examples</i>	29

Color

Hex(FE726F)

Conversions

Conversions Part 1

Format	Color
Hex	FE726F
RGB	254, 114, 111
RGB Percent	100%, 45%, 44%
CMY	0.0039, 0.5529, 0.5647
CMYK	0.00, 0.55, 0.56, 0.00
HSL	1°, 99%, 72%
HSV	1°, 56%, 100%
XYZ	49.7596, 34.2532, 19.0278
YIQ	155.5180, 84.4030, 28.7470

Conversions

Conversions Part 2

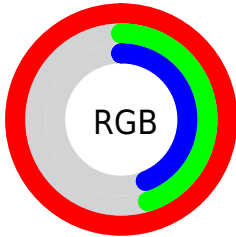
Format	Color
R_{YB}	254, 114, 111
Decimal	16675439
CIE Lab	65.16, 53.14, 28.12
CIE LCh	65, 60.120, 27.887
Yxy	34.2532, 0.4829, 0.3324
Android (android.graphics.Color)	4294865519 (0xFFFE726F)
YUV	155.5180, -21.9474, 86.3687
Hunter-Lab	58.5262, 49.3418, 21.6922

Details

The Hex color **FE726F** is a light color, and the websafe version is hex **FF6666**. A complement of this color would be **6FFBFE**, and the grayscale version is **9C9C9C**.

A 20% lighter version of the original color is **FFAAA3**, and **C03B3F** is the 20% darker color. If you saturate the color by 10%, you get **FE5956**, and if you desaturate by 10%, it is **FE8B88**.

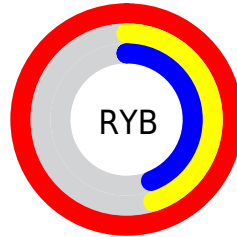
Distribution



Red (100%)

Green (45%)

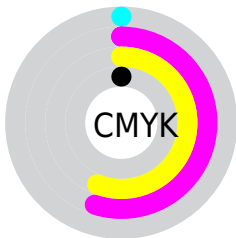
Blue (44%)



Red (100%)

Yellow (45%)

Blue (44%)

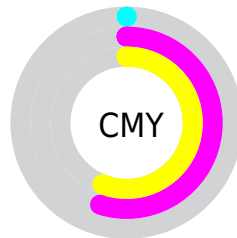


Cyan (0%)

Magenta (55%)

Yellow (56%)

Black (0%)



Cyan (0%)

Magenta (55%)

Yellow (56%)

Brightness & Saturation Gradients

These gradients show how the Hex color FE726F changes by changing the brightness by 10 percent. The first figure shows a shift by +10% for each color and the second figure -10%.

Similar to the brightness gradients but the following saturation gradients show a change of the Hex color FE726F by changing the saturation by 10% instead.

 FE726F

 FE726F

FFFFFF

 DF5757

 FFAAA3

 C03B3F

 FFC6BE

 A11B29

 FFE3DA

 830015

 FFFFF6

 660000

 480000

 2C0001

 000000

 FE726F

 FE726F

 FE5956

 FE8B88

 FE403C

 FEA4A2

 FE2723

 FEBDBB

 FE0F09

 FED5D5

 FE0500

 FEEEEEE

FEFFFF

Harmonies

Analogous

The Analogous color harmony consists of three colors that are next to each other on the color wheel.



FC6CA4



FE726F



E78642

Triad

The Triadic color harmony groups three colors that are evenly spaced from another and form a triangle on the color wheel.



FE726F



3DB362



00A5FF

Complementary

The Complementary color scheme is a pair of colors which are on the opposite of each other on the color wheel.



FE726F



6FFBFE

Split Complementary

Split-complementary colors differ from the complementary color scheme. The scheme consists of three colors, the original color and two neighbors of the complement color.



00B2F9



FE726F



00B898

Square

The Square scheme is like the rectangle color scheme, but the four colors are evenly spaced on the color wheel.



FE726F



89AA37



00B8CF



9892FE

Rectangle

The Rectangle color scheme consists of four colors that form a rectangle on the color wheel.



FE726F



CD942E



00B8CF



00AAFF

Sweetspot

The Sweet Spot groups the original color and five complimentary colors.



FE726F



FFD5D4



FE6FFC



806766



000000



808080

Same Dimension

The Same Dimension uses a secret algorithm to generate beautiful new colors.



FE726F



FF5552



FEB96F



807373



BF0400



400100

Inverse Universe

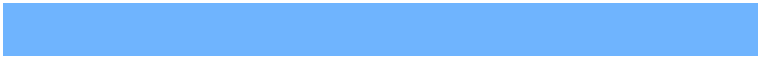
The Inverse Universe completely reimagines the original color for something new.



6FFBFE



52FBFF



6FB4FE



737F80



00BBBF



003E40

Previews

White Background



This preview shows how the Hex color FE726F looks on a white background.

Color Contrast Check

Large Text (above 18pt) WCAG AA × Fail

Any Text WCAG AA × Fail

Large Text (above 18pt) WCAG AAA × Fail

Any Text WCAG AAA × Fail

Black Background



Color Contrast Check

Large Text (above 18pt) WCAG AA ✓ Pass

Any Text WCAG AA ✓ Pass

Large Text (above 18pt) WCAG AAA ✓ Pass

Any Text WCAG AAA ✓ Pass

If you want to check with other color combinations, try the [Color Contrast Checker](#).

Hex FE726F Background



This preview shows how black text looks on a background with the Hex color FE726F.



This preview shows how white text looks on a background with the Hex color FE726F.

Color Blindness Simulation

Color vision deficiency is a very complex topic, and I could not describe the different causes any better than Wikipedia does, so if you want to learn more, you should check out their [article about color blindness](#).

Dichromacy



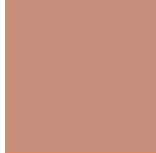


Tritanopia
FF7178

Trichromacy



Original Color
FE726F



Protanomaly
C78E7C



Deuteranomaly
D58A6B

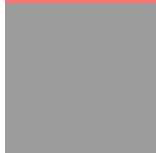


Tritanomaly
FF7175

Monochromacy



Original Color
FE726F



Achromatopsia
9C9C9C



Achromatomaly
C08D8C

CSS Examples

Text

The CSS property to change the color of the text to Hex FE726F is called "color". The color property can be set on classes, ids or directly on the HTML element.

This example shows how text in the color #FE726F looks like.

```
.text, #text, p{  
    color:#FE726F  
}
```

If you want to add a text shadow in that color use the text-shadow property, you can generate a text shadow directly with our [CSS Text Shadow Generator](#).

Here you see how black text with a 4 pixel #FE726F colored shadow looks like.

```
.shadow{ text-shadow: 4px 4px 2px #FE726F
}
```

Border

The CSS property to change the border of an element to Hex FE726F is called "border". The border property can be set on classes, ids or directly on the HTML element.

This example shows the color as border, it can be applied via the CSS property "border" or "border-color".

```
.border, #border, table{ border:4px solid
#FE726F }
```

If only the border color should be changed use the property `border-color`.

```
.border{ border-color:#FE726F }
```

If you want to add a box shadow in that color use:

Here you see how a box with a 4 pixel #FE726F colored shadow looks like.

```
.boxshadow{ -moz-box-shadow:4px 4px 4px  
4px #FE726F; -webkit-box-shadow:4px 4px  
4px 4px #FE726F; box-shadow:4px 4px 4px  
4px #FE726F }
```

Background

The CSS property to change the background color of an element to Hex FE726F is called "background". The background property can be set on classes, ids or directly on the HTML element.

```
.background, #background, body{  
background:#FE726F }
```

If only the background color should be changed can be used:

```
.background{ background-color:#FE726F }
```

This example shows the color as background, it is applied via the CSS property "background".

To optimize and compress your CSS code, you can use our [online CSS compressor and optimizer](#) based on csstidy. If you want to create a linear or radial gradient as background or border, check our [CSS Gradient Generator](#).

Hey! You found this booklet interesting? Support Converting Colors with the new Membership Option!

The pro membership hides all ads, plus gives you double the colors in the color bucket, and more awesome pro features!

[Learn more, Memberships starting at \\$2.50/m!](#)

**Follow me
on Twitter!**

@ConvertingColor