

Converting Colors

Hex(FE8F72)

Have a look what the booklet for
Hex(FE8F72) contains.

Hex(FE8F72)	3
<i>Conversions</i>	4
<i>Details</i>	6
<i>Harmonies</i>	11
<i>Previews</i>	23
<i>Color Blindness Simulation</i>	26
<i>CSS Examples</i>	29

Color

Hex(FE8F72)

Conversions

Conversions Part 1

Format	Color
Hex	FE8F72
RGB	254, 143, 114
RGB Percent	100%, 56%, 45%
CMY	0.0039, 0.4392, 0.5529
CMYK	0.00, 0.44, 0.55, 0.00
HSL	12°, 99%, 72%
HSV	12°, 55%, 100%
XYZ	53.7328, 41.9307, 21.1810
YIQ	172.8830, 75.4650, 14.5130

Conversions

Conversions Part 2

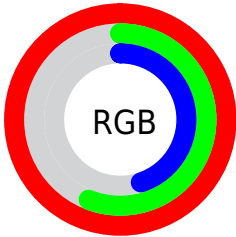
Format	Color
RYB	254, 151, 114
Decimal	16682866
CIELab	70.82, 39.19, 33.81
CIELCh	71, 51.762, 40.782
Yxy	41.9307, 0.4599, 0.3589
Android (android.graphics.Color)	4294872946 (0xFFFE8F72)
YUV	172.8830, -29.0293, 71.1396
Hunter-Lab	64.7539, 34.8000, 25.9340

Details

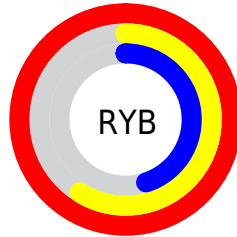
The Hex color **FE8F72** is a light color, and the websafe version is hex **FF9966**. A complement of this color would be **72E1FE**, and the grayscale version is **ADADAD**.

A 20% lighter version of the original color is **FFC6A6**, and **C15B41** is the 20% darker color. If you saturate the color by 10%, you get **FE7B59**, and if you desaturate by 10%, it is **FEA38B**.

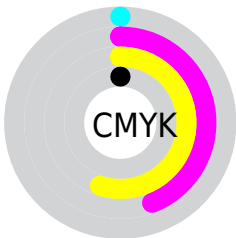
Distribution



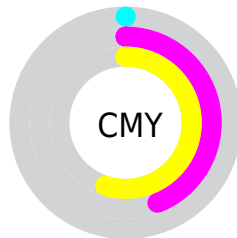
- Red (100%)
- Green (56%)
- Blue (45%)



- Red (100%)
- Yellow (59%)
- Blue (45%)



- Cyan (0%)
- Magenta (44%)
- Yellow (55%)
- Black (0%)



- Cyan (0%)
- Magenta (44%)
- Yellow (55%)

Brightness & Saturation Gradients

These gradients show how the Hex color FE8F72 changes by changing the brightness by 10 percent. The first figure shows a shift by +10% for each color and the second figure -10%.

Similar to the brightness gradients but the following saturation gradients show a change of the Hex color FE8F72 by changing the saturation by 10% instead.

 FE8F72

 FE8F72

FFFFFF

 DF7459

 FFC6A6

 C15B41

 FFE3C2

 A3412B

 FFFFDE

 862815

 FFFFFA

 690A00

 4C0000

 330001

 000000

 FE8F72

 FE8F72

 FE7B59

 FEA38B

 FE673F

 FEB7A5

 FE5326

 FECBBE

 FE3E0C

 FEE0D8

 FE3500

 FEF4F1

FEFFFF

Harmonies

Analogous

The Analogous color harmony consists of three colors that are next to each other on the color wheel.



FF859E



FE8F72



E2A053

Triad

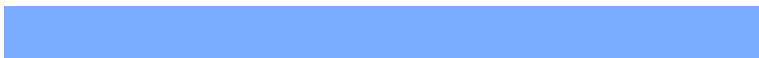
The Triadic color harmony groups three colors that are evenly spaced from another and form a triangle on the color wheel.



FE8F72



3CC38D



7CACFF

Complementary

The Complementary color scheme is a pair of colors which are on the opposite of each other on the color wheel.



FE8F72



72E1FE

Split Complementary

Split-complementary colors differ from the complementary color scheme. The scheme consists of three colors, the original color and two neighbors of the complement color.



00BBFF



FE8F72



00C5BD

Square

The Square scheme is like the rectangle color scheme, but the four colors are evenly spaced on the color wheel.



FE8F72



85BC63



00C3EA



C79AF5

Rectangle

The Rectangle color scheme consists of four colors that form a rectangle on the color wheel.



FE8F72



C8AB4C



00C3EA



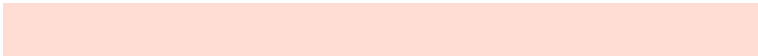
59B2FF

Sweetspot

The Sweet Spot groups the original color and five complimentary colors.



FE8F72



FFDDD4



FE72E2



806B66



000000



808080

Same Dimension

The Same Dimension uses a secret algorithm to generate beautiful new colors.



FE8F72



FF7A57



FED472



807573



BF2800



400D00

Inverse Universe

The Inverse Universe completely reimagines the original color for something new.



72E1FE



57DCFF



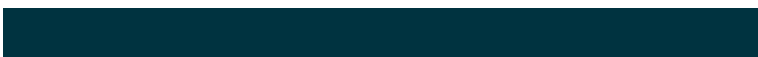
729CFE



737D80



0098BF



003340

Previews

White Background



This preview shows how the Hex color FE8F72 looks on a white background.

Color Contrast Check

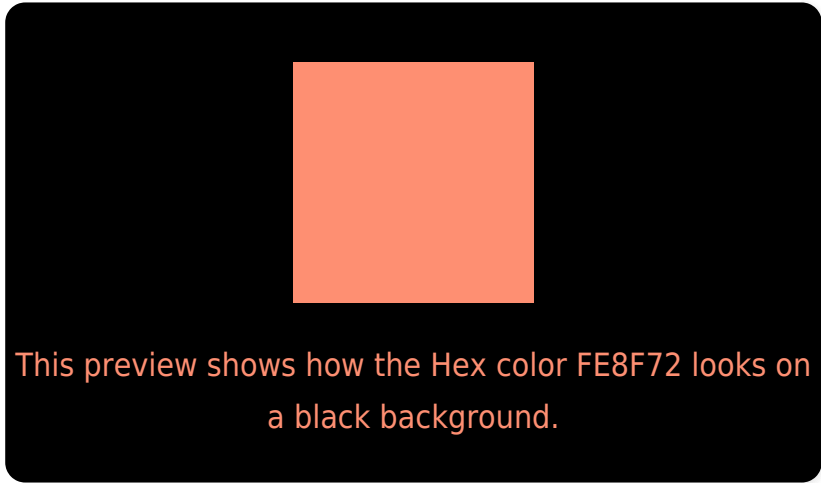
Large Text (above 18pt) WCAG AA × Fail

Any Text WCAG AA × Fail

Large Text (above 18pt) WCAG AAA × Fail

Any Text WCAG AAA × Fail

Black Background



Color Contrast Check

Large Text (above 18pt) WCAG AA ✓ Pass

Any Text WCAG AA ✓ Pass

Large Text (above 18pt) WCAG AAA ✓ Pass

Any Text WCAG AAA ✓ Pass

If you want to check with other color combinations, try the [Color Contrast Checker](#).

Hex FE8F72 Background



This preview shows how black text looks on a background with the Hex color FE8F72.

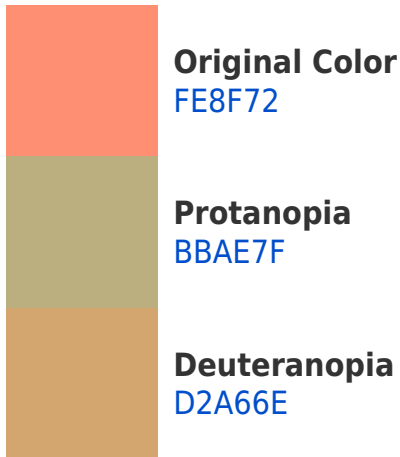


This preview shows how white text looks on a background with the Hex color FE8F72.

Color Blindness Simulation

Color vision deficiency is a very complex topic, and I could not describe the different causes any better than Wikipedia does, so if you want to learn more, you should check out their [article about color blindness](#).

Dichromacy





Tritanopia
FF8B95

Trichromacy



Original Color
FE8F72



Protanomaly
D3A37A



Deuteranomaly
E29E6F



Tritanomaly
FF8C88

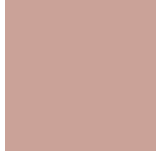
Monochromacy



Original Color
FE8F72



Achromatopsia
ADADAD



Achromatomaly
CAA298

CSS Examples

Text

The CSS property to change the color of the text to Hex FE8F72 is called "color". The color property can be set on classes, ids or directly on the HTML element.

This example shows how text in the color #FE8F72 looks like.

```
.text, #text, p{  
    color:#FE8F72  
}
```

If you want to add a text shadow in that color use the text-shadow property, you can generate a text shadow directly with our [CSS Text Shadow Generator](#).

Here you see how black text with a 4 pixel #FE8F72 colored shadow looks like.

```
.shadow{ text-shadow: 4px 4px 2px #FE8F72
}
```

Border

The CSS property to change the border of an element to Hex FE8F72 is called "border". The border property can be set on classes, ids or directly on the HTML element.

This example shows the color as border, it can be applied via the CSS property "border" or "border-color".

```
.border, #border, table{ border:4px solid
#FE8F72 }
```

If only the border color should be changed use the property `border-color`.

```
.border{ border-color:#FE8F72 }
```

If you want to add a box shadow in that color use:

Here you see how a box with a 4 pixel #FE8F72 colored shadow looks like.

```
.boxshadow{ -moz-box-shadow:4px 4px 4px  
4px #FE8F72; -webkit-box-shadow:4px 4px  
4px 4px #FE8F72; box-shadow:4px 4px 4px  
4px #FE8F72 }
```

Background

The CSS property to change the background color of an element to Hex FE8F72 is called "background". The background property can be set on classes, ids or directly on the HTML element.

```
.background, #background, body{  
background:#FE8F72 }
```

If only the background color should be changed can be used:

```
.background{ background-color:#FE8F72 }
```

This example shows the color as background, it is applied via the CSS property "background".

To optimize and compress your CSS code, you can use our [online CSS compressor and optimizer](#) based on csstidy. If you want to create a linear or radial gradient as background or border, check our [CSS Gradient Generator](#).

Hey! You found this booklet interesting? Support Converting Colors with the new Membership Option!

The pro membership hides all ads, plus gives you double the colors in the color bucket, and more awesome pro features!

[Learn more, Memberships starting at \\$2.50/m!](#)

**Follow me
on Twitter!**

@ConvertingColor