

Converting Colors

Hex(FE9276)

Have a look what the booklet for
Hex(FE9276) contains.

Hex(FE9276)	3
<i>Conversions</i>	4
<i>Details</i>	6
<i>Harmonies</i>	11
<i>Previews</i>	23
<i>Color Blindness Simulation</i>	26
<i>CSS Examples</i>	29

Color

Hex(FE9276)

Conversions

Conversions Part 1

Format	Color
Hex	FE9276
RGB	254, 146, 118
RGB Percent	100%, 57%, 46%
CMY	0.0039, 0.4275, 0.5373
CMYK	0.00, 0.43, 0.54, 0.00
HSL	12°, 99%, 73%
HSV	12°, 54%, 100%
XYZ	54.4219, 42.9366, 22.5588
YIQ	175.1000, 73.3560, 14.1880

Conversions

Conversions Part 2

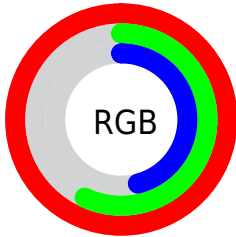
Format	Color
R_{YB}	254, 153, 118
Decimal	16683638
CIE _{Lab}	71.51, 37.99, 32.54
CIE _{LCh}	72, 50.016, 40.583
Yxy	42.9366, 0.4538, 0.3581
Android (android.graphics.Color)	4294873718 (0xFFFE9276)
YUV	175.1000, -28.1503, 69.1953
Hunter-Lab	65.5260, 33.5807, 25.4563

Details

The Hex color **FE9276** is a light color, and the websafe version is hex **FF9966**. A complement of this color would be **76E2FE**, and the grayscale version is **AFAFAF**.

A 20% lighter version of the original color is **FFC9AA**, and **C15E45** is the 20% darker color. If you saturate the color by 10%, you get **FE7E5D**, and if you desaturate by 10%, it is **FEA68F**.

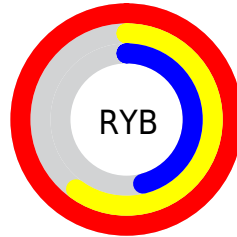
Distribution



Red (100%)

Green (57%)

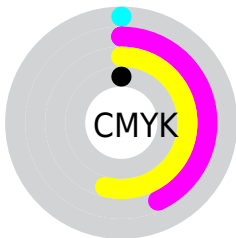
Blue (46%)



Red (100%)

Yellow (60%)

Blue (46%)

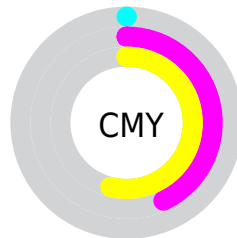


Cyan (0%)

Magenta (43%)

Yellow (54%)

Black (0%)



Cyan (0%)

Magenta (43%)

Yellow (54%)

Brightness & Saturation Gradients

These gradients show how the Hex color FE9276 changes by changing the brightness by 10 percent. The first figure shows a shift by +10% for each color and the second figure -10%.

Similar to the brightness gradients but the following saturation gradients show a change of the Hex color FE9276 by changing the saturation by 10% instead.

 FE9276

 FE9276

FFFFFF

 DF775D

 FFC9AA

 C15E45

 FFE6C6

 A3442E

 FFFFE2

 862B18

 690F00

 4D0000

 330001

 040000

 000000

 FE9276

 FE9276

 FE7E5D

 FEA68F

 FE6A43

 FEBAA9

 FE552A

 FECFC2

 FE4110

 FEE3DC

 FE3400

 FEF7F5

FEFFFF

Harmonies

Analogous

The Analogous color harmony consists of three colors that are next to each other on the color wheel.



FF89A1



FE9276



E3A259

Triad

The Triadic color harmony groups three colors that are evenly spaced from another and form a triangle on the color wheel.



FE9276



46C48F



81AEFF

Complementary

The Complementary color scheme is a pair of colors which are on the opposite of each other on the color wheel.



FE9276



76E2FE

Split Complementary

Split-complementary colors differ from the complementary color scheme. The scheme consists of three colors, the original color and two neighbors of the complement color.



00BCFF



FE9276



00C7BE

Square

The Square scheme is like the rectangle color scheme, but the four colors are evenly spaced on the color wheel.



FE9276



89BD67



00C4E9



C89DF5

Rectangle

The Rectangle color scheme consists of four colors that form a rectangle on the color wheel.



FE9276



CAAD51



00C4E9



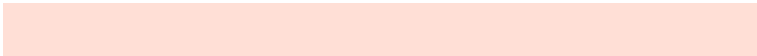
60B4FF

Sweetspot

The Sweet Spot groups the original color and five complimentary colors.



FE9276



FFDFD6



FE76E3



806C67



000000



808080

Same Dimension

The Same Dimension uses a secret algorithm to generate beautiful new colors.



FE9276



FF7D5C



FED576



807573



BF2700



400D00

Inverse Universe

The Inverse Universe completely reimagines the original color for something new.



76E2FE



5CDDFF



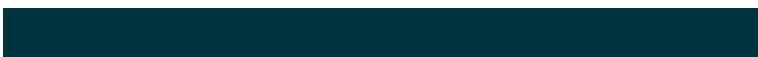
769FFE



737D80



0098BF



003340

Previews

White Background



This preview shows how the Hex color FE9276 looks on a white background.

Color Contrast Check

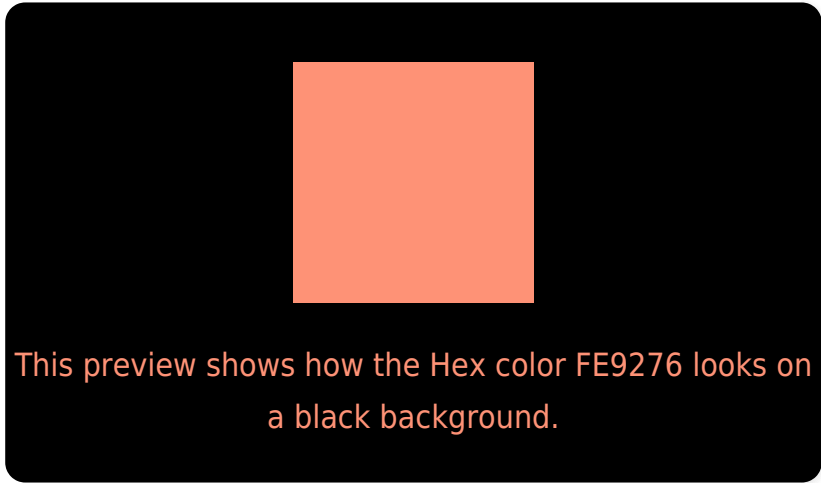
Large Text (above 18pt) WCAG AA × Fail

Any Text WCAG AA × Fail

Large Text (above 18pt) WCAG AAA × Fail

Any Text WCAG AAA × Fail

Black Background



Color Contrast Check

Large Text (above 18pt) WCAG AA ✓ Pass

Any Text WCAG AA ✓ Pass

Large Text (above 18pt) WCAG AAA ✓ Pass

Any Text WCAG AAA ✓ Pass

If you want to check with other color combinations, try the [Color Contrast Checker](#).

Hex FE9276 Background



This preview shows how black text looks on a background with the Hex color FE9276.

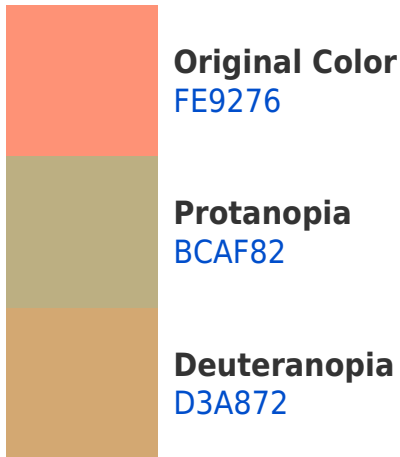


This preview shows how white text looks on a background with the Hex color FE9276.

Color Blindness Simulation

Color vision deficiency is a very complex topic, and I could not describe the different causes any better than Wikipedia does, so if you want to learn more, you should check out their [article about color blindness](#).

Dichromacy



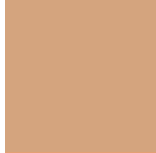


Tritanopia
FF8E98

Trichromacy



Original Color
FE9276



Protanomaly
D4A47E



Deuteranomaly
E3A073

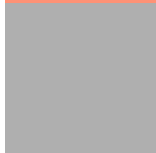


Tritanomaly
FF8F8C

Monochromacy



Original Color
FE9276



Achromatopsia
AFAFAF



Achromatomaly
CCA49A

CSS Examples

Text

The CSS property to change the color of the text to Hex FE9276 is called "color". The color property can be set on classes, ids or directly on the HTML element.

This example shows how text in the color #FE9276 looks like.

```
.text, #text, p{  
    color:#FE9276  
}
```

If you want to add a text shadow in that color use the text-shadow property, you can generate a text shadow directly with our [CSS Text Shadow Generator](#).

Here you see how black text with a 4 pixel #FE9276 colored shadow looks like.

```
.shadow{ text-shadow: 4px 4px 2px #FE9276
}
```

Border

The CSS property to change the border of an element to Hex FE9276 is called "border". The border property can be set on classes, ids or directly on the HTML element.

This example shows the color as border, it can be applied via the CSS property "border" or "border-color".

```
.border, #border, table{ border:4px solid
#FE9276 }
```

If only the border color should be changed use the property `border-color`.

```
.border{ border-color:#FE9276 }
```

If you want to add a box shadow in that color use:

Here you see how a box with a 4 pixel #FE9276 colored shadow looks like.

```
.boxshadow{ -moz-box-shadow:4px 4px 4px  
4px #FE9276; -webkit-box-shadow:4px 4px  
4px 4px #FE9276; box-shadow:4px 4px 4px  
4px #FE9276 }
```

Background

The CSS property to change the background color of an element to Hex FE9276 is called "background". The background property can be set on classes, ids or directly on the HTML element.

```
.background, #background, body{  
background:#FE9276 }
```

If only the background color should be changed can be used:

```
.background{ background-color:#FE9276 }
```

This example shows the color as background, it is applied via the CSS property "background".

To optimize and compress your CSS code, you can use our [online CSS compressor and optimizer](#) based on csstidy. If you want to create a linear or radial gradient as background or border, check our [CSS Gradient Generator](#).

Hey! You found this booklet interesting? Support Converting Colors with the new Membership Option!

The pro membership hides all ads, plus gives you double the colors in the color bucket, and more awesome pro features!

[Learn more, Memberships starting at \\$2.50/m!](#)

**Follow me
on Twitter!**

@ConvertingColor