

Converting Colors

Hex(FE9997)

Have a look what the booklet for
Hex(FE9997) contains.

Hex(FE9997)	3
<i>Conversions</i>	4
<i>Details</i>	6
<i>Harmonies</i>	11
<i>Previews</i>	23
<i>Color Blindness Simulation</i>	26
<i>CSS Examples</i>	29

Color

Hex(FE9997)

Conversions

Conversions Part 1

Format	Color
Hex	FE9997
RGB	254, 153, 151
RGB Percent	100%, 60%, 59%
CMY	0.0039, 0.4000, 0.4078
CMYK	0.00, 0.40, 0.41, 0.00
HSL	1°, 98%, 79%
HSV	1°, 41%, 100%
XYZ	57.8502, 46.0877, 35.1249
YIQ	182.9710, 60.8380, 20.7900

Conversions

Conversions Part 2

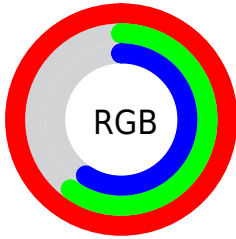
Format	Color
R_{YB}	254, 153, 151
Decimal	16685463
CIE _{Lab}	73.60, 37.52, 17.32
CIE _{LCh}	74, 41.321, 24.782
Yxy	46.0877, 0.4160, 0.3314
Android (android.graphics.Color)	4294875543 (0xFFFE9997)
YUV	182.9710, -15.7617, 62.2924
Hunter-Lab	67.8879, 33.3037, 16.8451

Details

The Hex color **FE9997** is a light color, and the websafe version is hex **FF9999**. A complement of this color would be **97FCFE**, and the grayscale version is **B7B7B7**.

A 20% lighter version of the original color is **FFD0CD**, and **C26464** is the 20% darker color. If you saturate the color by 10%, you get **FE807E**, and if you desaturate by 10%, it is **FEB2B0**.

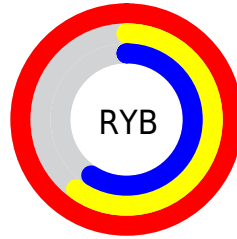
Distribution



Red (100%)

Green (60%)

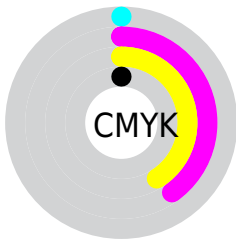
Blue (59%)



Red (100%)

Yellow (60%)

Blue (59%)

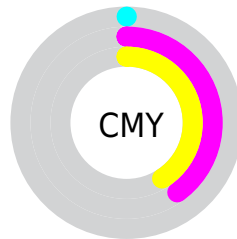


Cyan (0%)

Magenta (40%)

Yellow (41%)

Black (0%)



Cyan (0%)

Magenta (40%)

Yellow (41%)

Brightness & Saturation Gradients

These gradients show how the Hex color FE9997 changes by changing the brightness by 10 percent. The first figure shows a shift by +10% for each color and the second figure -10%.

Similar to the brightness gradients but the following saturation gradients show a change of the Hex color FE9997 by changing the saturation by 10% instead.

 FE9997

 FE9997

FFFFFF

 E07E7D

 FFD0CD

 C26464

 FFEDE9

 A54B4C

 893236

 6D1820

 51000A

 370000

 160000

 000000

 FE9997

 FE9997

 FE807E

 FEB2B0

 FE6764

 FECBCA

 FE4E4B

 FEE4E3

 FE3531

 FEFDFD

 FE1C18

 FEFFFF

 FE0500

Harmonies

Analogous

The Analogous color harmony consists of three colors that are next to each other on the color wheel.



F998BD



FE9997



F0A378

Triad

The Triadic color harmony groups three colors that are evenly spaced from another and form a triangle on the color wheel.



FE9997



81C488



70BBFF

Complementary

The Complementary color scheme is a pair of colors which are on the opposite of each other on the color wheel.



FE9997



97FCFE

Split Complementary

Split-complementary colors differ from the complementary color scheme. The scheme consists of three colors, the original color and two neighbors of the complement color.



1CC4F2



FE9997



4CC9AD

Square

The Square scheme is like the rectangle color scheme, but the four colors are evenly spaced on the color wheel.



FE9997



ADBC6F



00C8D3



AFADFA

Rectangle

The Rectangle color scheme consists of four colors that form a rectangle on the color wheel.



FE9997



DEAC6C



00C8D3



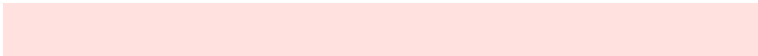
58BEFD

Sweetspot

The Sweet Spot groups the original color and five complimentary colors.



FE9997



FFE1E0



FE97FC



806E6E



000000



808080

Same Dimension

The Same Dimension uses a secret algorithm to generate beautiful new colors.



FE9997



FF8482



FECC97



807373



BF0400



400100

Inverse Universe

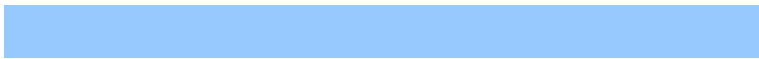
The Inverse Universe completely reimagines the original color for something new.



97FCFE



82FDFF



97C9FE



737F80



00BCBF



003F40

Previews

White Background



This preview shows how the Hex color FE9997 looks on a white background.

Color Contrast Check

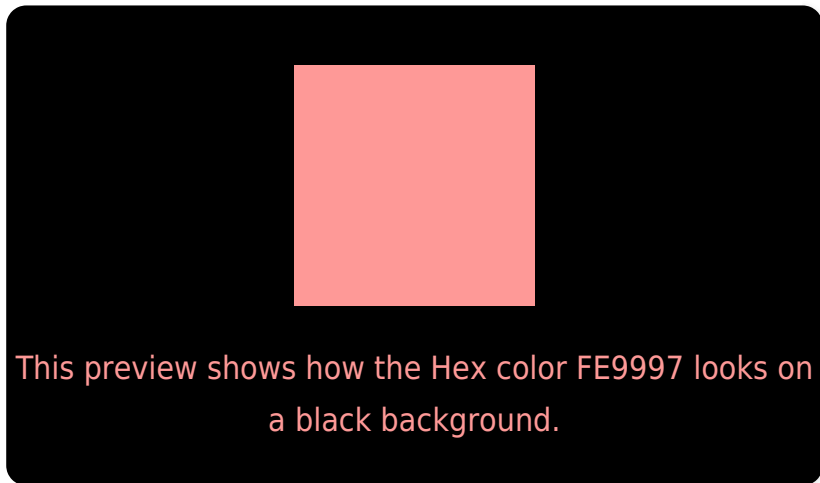
Large Text (above 18pt) WCAG AA × Fail

Any Text WCAG AA × Fail

Large Text (above 18pt) WCAG AAA × Fail

Any Text WCAG AAA × Fail

Black Background



Color Contrast Check

Large Text (above 18pt) WCAG AA ✓ Pass

Any Text WCAG AA ✓ Pass

Large Text (above 18pt) WCAG AAA ✓ Pass

Any Text WCAG AAA ✓ Pass

If you want to check with other color combinations, try the [Color Contrast Checker](#).

Hex FE9997 Background



This preview shows how black text looks on a background with the Hex color FE9997.

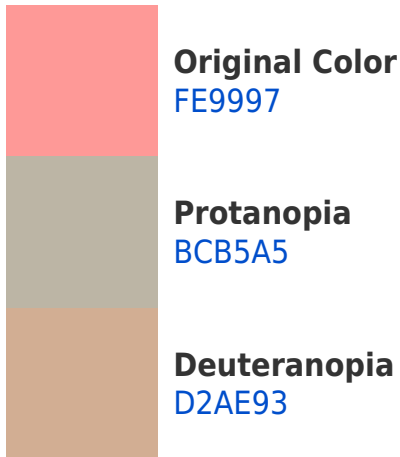


This preview shows how white text looks on a background with the Hex color FE9997.

Color Blindness Simulation

Color vision deficiency is a very complex topic, and I could not describe the different causes any better than Wikipedia does, so if you want to learn more, you should check out their [article about color blindness](#).

Dichromacy



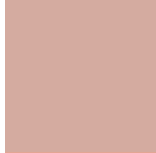


Tritanopia
FF97A2

Trichromacy



Original Color
FE9997



Protanomaly
D4ABA0



Deuteranomaly
E2A694



Tritanomaly
FF989E

Monochromacy



Original Color
FE9997



Achromatopsia
B7B7B7



Achromatomaly
D1ACAB

CSS Examples

Text

The CSS property to change the color of the text to Hex FE9997 is called "color". The color property can be set on classes, ids or directly on the HTML element.

This example shows how text in the color #FE9997 looks like.

```
.text, #text, p{  
  color:#FE9997  
}
```

If you want to add a text shadow in that color use the text-shadow property, you can generate a text shadow directly with our [CSS Text Shadow Generator](#).

Here you see how black text with a 4 pixel #FE9997 colored shadow looks like.

```
.shadow{ text-shadow: 4px 4px 2px #FE9997
}
```

Border

The CSS property to change the border of an element to Hex FE9997 is called "border". The border property can be set on classes, ids or directly on the HTML element.

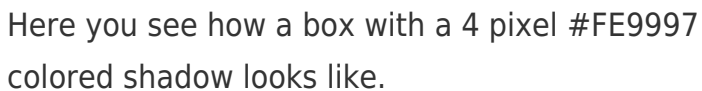
This example shows the color as border, it can be applied via the CSS property "border" or "border-color".

```
.border, #border, table{ border:4px solid
#FE9997 }
```

If only the border color should be changed use the property `border-color`.

```
.border{ border-color:#FE9997 }
```

If you want to add a box shadow in that color use:



Here you see how a box with a 4 pixel `#FE9997` colored shadow looks like.

```
.boxshadow{ -moz-box-shadow:4px 4px 4px  
4px #FE9997; -webkit-box-shadow:4px 4px  
4px 4px #FE9997; box-shadow:4px 4px 4px  
4px #FE9997 }
```

Background

The CSS property to change the background color of an element to Hex FE9997 is called "background". The background property can be set on classes, ids or directly on the HTML element.

```
.background, #background, body{  
background:#FE9997 }
```

If only the background color should be changed can be used:

```
.background{ background-color:#FE9997 }
```

This example shows the color as background, it is applied via the CSS property "background".

To optimize and compress your CSS code, you can use our [online CSS compressor and optimizer](#) based on csstidy. If you want to create a linear or radial gradient as background or border, check our [CSS Gradient Generator](#).

Hey! You found this booklet interesting? Support Converting Colors with the new Membership Option!

The pro membership hides all ads, plus gives you double the colors in the color bucket, and more awesome pro features!

[Learn more, Memberships starting at \\$2.50/m!](#)

**Follow me
on Twitter!**

@ConvertingColor