

Converting Colors

Hex(FEAFAA)

Have a look what the booklet for
Hex(FEAFAA) contains.

Hex(FEAFAA)	3
<i>Conversions</i>	4
<i>Details</i>	6
<i>Harmonies</i>	11
<i>Previews</i>	23
<i>Color Blindness Simulation</i>	26
<i>CSS Examples</i>	29

Color

Hex(FEAFAA)

Conversions

Conversions Part 1

Format	Color
Hex	FEAFAA
RGB	254, 175, 170
RGB Percent	100%, 69%, 67%
CMY	0.0039, 0.3137, 0.3333
CMYK	0.00, 0.31, 0.33, 0.00
HSL	4°, 98%, 83%
HSV	4°, 33%, 100%
XYZ	63.4587, 54.6331, 45.2308
YIQ	198.0510, 48.6890, 15.1930

Conversions

Conversions Part 2

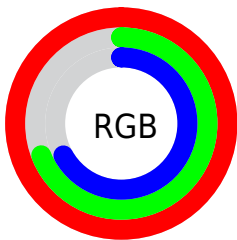
Format	Color
R _Y B	254, 175, 170
Decimal	16691114
CIE Lab	78.83, 28.26, 14.27
CIE LCh	79, 31.657, 26.792
Yxy	54.6331, 0.3885, 0.3345
Android (android.graphics.Color)	4294881194 (0xFFFEAFAA)
YUV	198.0510, -13.8291, 49.0673
Hunter-Lab	73.9142, 23.9007, 15.4582

Details

The Hex color **FEAFAA** is a light color, and the websafe version is hex **FF9999**. A complement of this color would be **AAF9FE**, and the grayscale version is **C6C6C6**.

A 20% lighter version of the original color is **FFE7E1**, and **C37A76** is the 20% darker color. If you saturate the color by 10%, you get **FE9791**, and if you desaturate by 10%, it is **FEC7C3**.

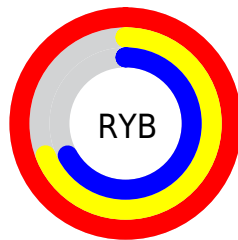
Distribution



Red (100%)

Green (69%)

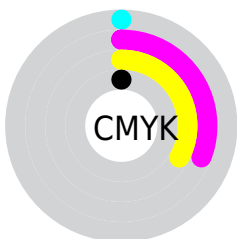
Blue (67%)



Red (100%)

Yellow (69%)

Blue (67%)

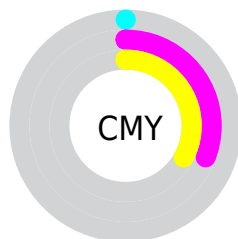


Cyan (0%)

Magenta (31%)

Yellow (33%)

Black (0%)



Cyan (0%)

Magenta (31%)

Yellow (33%)

Brightness & Saturation Gradients

These gradients show how the Hex color FEAFAA changes by changing the brightness by 10 percent. The first figure shows a shift by +10% for each color and the second figure -10%.

Similar to the brightness gradients but the following saturation gradients show a change of the Hex color FEAFAA by changing the saturation by 10% instead.

 FEAFAA

 FEAFAA

FFFFFF

 E09490

 FFE7E1

 C37A76

FFFFFFE

 A7605D

 8B4846

 70302F

 55191B

 3C0100

 250001

 000000

 FEAF4A

 FEAF4A

 FE9791

 FEC7C3

 FE7F77

 FEDFDD

 FE675E

 FEF7F6

 FE4F44

FEFFFF

 FE382B

 FE2012

 FE0F00

Harmonies

Analogous

The Analogous color harmony consists of three colors that are next to each other on the color wheel.



FAAEC7



FEAFAA



F2B693

Triad

The Triadic color harmony groups three colors that are evenly spaced from another and form a triangle on the color wheel.



FEAFAA



9AD0A2



99C7FD

Complementary

The Complementary color scheme is a pair of colors which are on the opposite of each other on the color wheel.



FEAFAA



AAF9FE

Split Complementary

Split-complementary colors differ from the complementary color scheme. The scheme consists of three colors, the original color and two neighbors of the complement color.



73CFF4



FEAFAA



7AD3BF

Square

The Square scheme is like the rectangle color scheme, but the four colors are evenly spaced on the color wheel.



FEAFAA



BCC98E



67D3DD



C3BDF8

Rectangle

The Rectangle color scheme consists of four colors that form a rectangle on the color wheel.



FEAFAA



E4BD8A



67D3DD



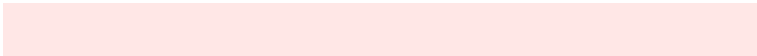
8BCAFC

Sweetspot

The Sweet Spot groups the original color and five complimentary colors.



FEAFAA



FFE7E6



FEAAFA



807170



000000



808080

Same Dimension

The Same Dimension uses a secret algorithm to generate beautiful new colors.



FEAFAA



FF9F99



FED8AA



807473



BF0B00



400400

Inverse Universe

The Inverse Universe completely reimagines the original color for something new.



AAF9FE



99F9FF



AAD0FE



737F80



00B4BF



003C40

Previews

White Background



This preview shows how the Hex color #FEAFAA looks on a white background.

Color Contrast Check

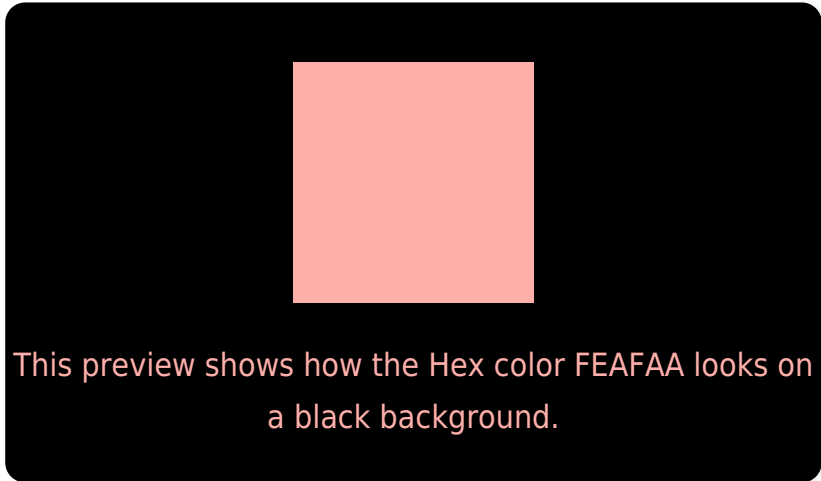
Large Text (above 18pt) WCAG AA × Fail

Any Text WCAG AA × Fail

Large Text (above 18pt) WCAG AAA × Fail

Any Text WCAG AAA × Fail

Black Background



Color Contrast Check

Large Text (above 18pt) WCAG AA ✓ Pass

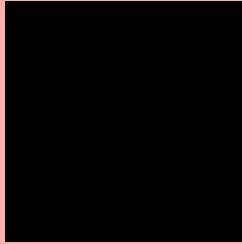
Any Text WCAG AA ✓ Pass

Large Text (above 18pt) WCAG AAA ✓ Pass

Any Text WCAG AAA ✓ Pass

If you want to check with other color combinations, try the [Color Contrast Checker](#).

Hex FEAFAA Background



This preview shows how black text looks on a background with the Hex color FEAFAA.

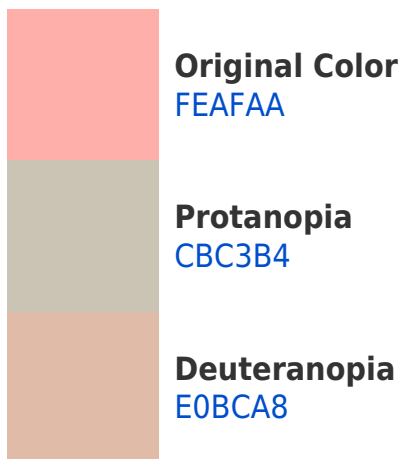


This preview shows how white text looks on a background with the Hex color FEAFAA.

Color Blindness Simulation

Color vision deficiency is a very complex topic, and I could not describe the different causes any better than Wikipedia does, so if you want to learn more, you should check out their [article about color blindness](#).

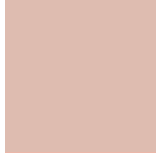
Dichromacy



Trichromacy



Original Color
FEAFAA



Protanomaly
DEBCB0



Deuteranomaly
EBB7A9



Tritanomaly
FFAEB4

Monochromacy



Original Color
FEAFAA



Achromatopsia
C6C6C6



Achromatomaly
DABEBC

CSS Examples

Text

The CSS property to change the color of the text to Hex FEAFAA is called "color". The color property can be set on classes, ids or directly on the HTML element.

This example shows how text in the color #FEAFAA looks like.

```
.text, #text, p{  
  color:#FEAFAA  
}
```

If you want to add a text shadow in that color use the text-shadow property, you can generate a text shadow directly with our [CSS Text Shadow Generator](#).

Here you see how black text with a 4 pixel #FEAFAA colored shadow looks like.

```
.shadow{ text-shadow: 4px 4px 2px #FEAFAA
}
```

Border

The CSS property to change the border of an element to Hex FEAFAA is called "border". The border property can be set on classes, ids or directly on the HTML element.

This example shows the color as border, it can be applied via the CSS property "border" or "border-color".

```
.border, #border, table{ border:4px solid
#FEAFAA }
```

If only the border color should be changed use the property `border-color`.

```
.border{ border-color:#FEAFAA }
```

If you want to add a box shadow in that color use:

Here you see how a box with a 4 pixel #FEAFAA colored shadow looks like.

```
.boxshadow{ -moz-box-shadow:4px 4px 4px  
4px #FEAFAA; -webkit-box-shadow:4px 4px  
4px 4px #FEAFAA; box-shadow:4px 4px 4px  
4px #FEAFAA }
```

Background

The CSS property to change the background color of an element to Hex FEAFAA is called "background". The background property can be set on classes, ids or directly on the HTML element.

```
.background, #background, body{  
background:#FEAFAA }
```

If only the background color should be changed can be used:

```
.background{ background-color:#FEAFAA }
```

This example shows the color as background, it is applied via the CSS property "background".

To optimize and compress your CSS code, you can use our [online CSS compressor and optimizer](#) based on csstidy. If you want to create a linear or radial gradient as background or border, check our [CSS Gradient Generator](#).

Hey! You found this booklet interesting? Support Converting Colors with the new Membership Option!

The pro membership hides all ads, plus gives you double the colors in the color bucket, and more awesome pro features!

[Learn more, Memberships starting at \\$2.50/m!](#)

**Follow me
on Twitter!**

@ConvertingColor