

# Converting Colors

Hex(FEB395)

Have a look what the booklet for  
Hex(FEB395) contains.

<b>Hex(FEB395)</b> .....	3
<i><b>Conversions</b></i> .....	4
<i><b>Details</b></i> .....	6
<i><b>Harmonies</b></i> .....	11
<i><b>Previews</b></i> .....	23
<i><b>Color Blindness Simulation</b></i> .....	26
<i><b>CSS Examples</b></i> .....	29

# **Color**

**Hex(FEB395)**

# Conversions

## Conversions Part 1

<b>Format</b>	<b>Color</b>
Hex	FEB395
RGB	254, 179, 149
RGB Percent	100%, 70%, 58%
CMY	0.0039, 0.2980, 0.4157
CMYK	0.00, 0.30, 0.41, 0.00
HSL	17°, 98%, 79%
HSV	17°, 41%, 100%
XYZ	62.4180, 55.4810, 35.8529
YIQ	198.0050, 54.3300, 6.5700

# Conversions

## Conversions Part 2

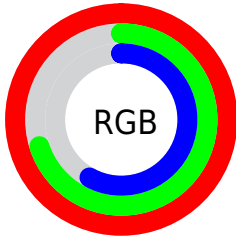
Format	Color
<a href="#">RYB</a>	<a href="#">254, 191, 149</a>
Decimal	<a href="#">16692117</a>
CIELab	<a href="#">79.32, 23.75, 26.23</a>
CIELCh	<a href="#">79, 35.389, 47.840</a>
Yxy	<a href="#">55.4810, 0.4060, 0.3608</a>
Android (android.graphics.Color)	<a href="#">4294882197 (0xFFFE395)</a>
YUV	<a href="#">198.0050, -24.1595, 49.1076</a>
Hunter-Lab	<a href="#">74.4855, 19.2311, 23.6012</a>

# Details

The Hex color **FEB395** is a light color, and the websafe version is hex **FFCC99**. A complement of this color would be **95E0FE**, and the grayscale version is **C6C6C6**.

A 20% lighter version of the original color is **FFEBCB**, and **C37E62** is the 20% darker color. If you saturate the color by 10%, you get **FEA17C**, and if you desaturate by 10%, it is **FEC5AE**.

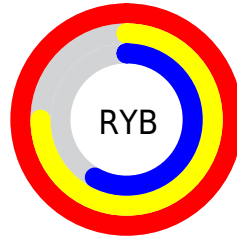
# Distribution



Red (100%)

Green (70%)

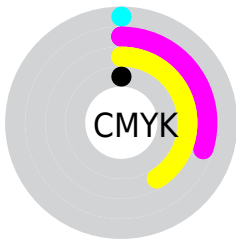
Blue (58%)



Red (100%)

Yellow (75%)

Blue (58%)

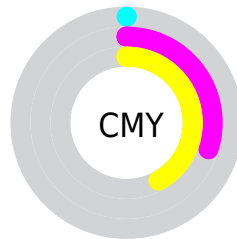


Cyan (0%)

Magenta (30%)

Yellow (41%)

Black (0%)



Cyan (0%)

Magenta (30%)

Yellow (42%)

# Brightness & Saturation Gradients

These gradients show how the Hex color FEB395 changes by changing the brightness by 10 percent. The first figure shows a shift by +10% for each color and the second figure -10%.

Similar to the brightness gradients but the following saturation gradients show a change of the Hex color FEB395 by changing the saturation by 10% instead.



 FEB395

FFFFFF

 FFEBCB

 FFFFE7

 FEB395

 E0987B

 C37E62

 A6654A

 8A4C33

 6F351D

 541E06

 3A0700

 230001

 000000

 FEB395

 FEB395

 FEA17C

 FEC5AE

 FE8F62

 FED7C8

 FE7D49

 FEE9E1

 FE6A2F

 FEFCFB

 FE5816

 FEFFFF

 FE4900

# Harmonies

## Analogous

The Analogous color harmony consists of three colors that are next to each other on the color wheel.



FFACB2



FEB395



E7BE84

# Triad

The Triadic color harmony groups three colors that are evenly spaced from another and form a triangle on the color wheel.



FEB395



7BD6B5



B6C1FF

# Complementary

The Complementary color scheme is a pair of colors which are on the opposite of each other on the color wheel.



FEB395



95E0FE

# Split Complementary

Split-complementary colors differ from the complementary color scheme. The scheme consists of three colors, the original color and two neighbors of the complement color.



84CCFF



FEB395



5BD6D7

# Square

The Square scheme is like the rectangle color scheme, but the four colors are evenly spaced on the color wheel.



FEB395



A2D197



5CD3F4



E1B5F1

# Rectangle

The Rectangle color scheme consists of four colors that form a rectangle on the color wheel.



FEB395



D3C583



5CD3F4



A6C5FF

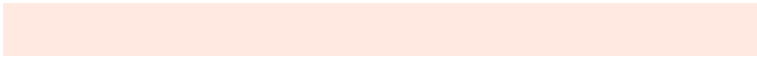


# Sweetspot

The Sweet Spot groups the original color and five complimentary colors.



FEB395



FFE9E0



FE95E0



80736E



000000



808080



# Same Dimension

The Same Dimension uses a secret algorithm to generate beautiful new colors.



FEB395



FFA480



FEE795



807673



BF3700

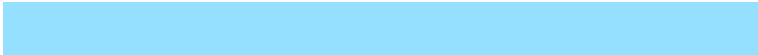


401200

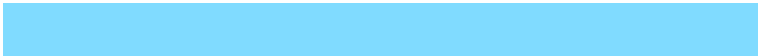


# Inverse Universe

The Inverse Universe completely reimagines the original color for something new.



95E0FE



80DBFF



95ACFE



737C80



0089BF



002E40



# Previews

## White Background



This preview shows how the Hex color FEB395 looks on a white background.

## Color Contrast Check

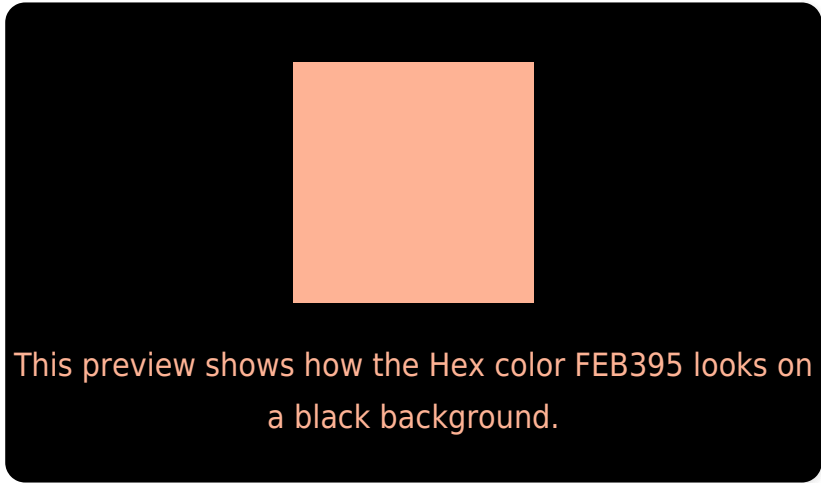
Large Text (above 18pt) WCAG AA × Fail

Any Text WCAG AA × Fail

Large Text (above 18pt) WCAG AAA × Fail

Any Text WCAG AAA × Fail

# Black Background



## Color Contrast Check

Large Text (above 18pt) WCAG AA ✓ Pass

Any Text WCAG AA ✓ Pass

Large Text (above 18pt) WCAG AAA ✓ Pass

Any Text WCAG AAA ✓ Pass

If you want to check with other color combinations, try the [Color Contrast Checker](#).



## Hex FEB395 Background



This preview shows how black text looks on a background with the Hex color FEB395.

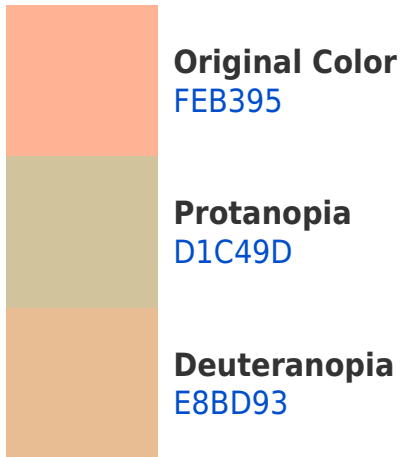


This preview shows how white text looks on a background with the Hex color FEB395.

# Color Blindness Simulation

Color vision deficiency is a very complex topic, and I could not describe the different causes any better than Wikipedia does, so if you want to learn more, you should check out their [article about color blindness](#).

## Dichromacy



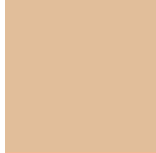


**Tritanopia**  
FFAFBB

# Trichromacy



**Original Color**  
FEB395



**Protanomaly**  
E1BE9A



**Deuteranomaly**  
F0B994

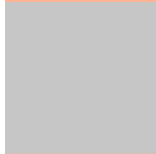


**Tritanomaly**  
FFB0AD

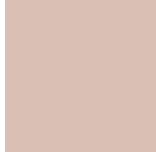
# Monochromacy



**Original Color**  
FEB395



**Achromatopsia**  
C6C6C6



**Achromatomaly**  
DABFB4

# CSS Examples

## Text

The CSS property to change the color of the text to Hex FEB395 is called "color". The color property can be set on classes, ids or directly on the HTML element.

This example shows how text in the color #FEB395 looks like.

```
.text, #text, p{  
    color:#FEB395  
}
```

If you want to add a text shadow in that color use the text-shadow property, you can generate a text shadow directly with our [CSS Text Shadow Generator](#).

Here you see how black text with a 4 pixel #FEB395 colored shadow looks like.

```
.shadow{ text-shadow: 4px 4px 2px #FEB395
}
```

## Border

The CSS property to change the border of an element to Hex FEB395 is called "border". The border property can be set on classes, ids or directly on the HTML element.

This example shows the color as border, it can be applied via the CSS property "border" or "border-color".

```
.border, #border, table{ border:4px solid
#FEB395 }
```

If only the border color should be changed use the property `border-color`.

```
.border{ border-color:#FEB395 }
```

If you want to add a box shadow in that color use:

Here you see how a box with a 4 pixel #FEB395 colored shadow looks like.

```
.boxshadow{ -moz-box-shadow:4px 4px 4px  
4px #FEB395; -webkit-box-shadow:4px 4px  
4px 4px #FEB395; box-shadow:4px 4px 4px  
4px #FEB395 }
```

# Background

The CSS property to change the background color of an element to Hex FEB395 is called "background". The background property can be set on classes, ids or directly on the HTML element.

```
.background, #background, body{  
background:#FEB395 }
```

If only the background color should be changed can be used:

```
.background{ background-color:#FEB395 }
```

This example shows the color as background, it is applied via the CSS property "background".

To optimize and compress your CSS code, you can use our [online CSS compressor and optimizer](#) based on csstidy. If you want to create a linear or radial gradient as background or border, check our [CSS Gradient Generator](#).



Hey! You found this booklet interesting? Support Converting Colors with the new Membership Option!

The pro membership hides all ads, plus gives you double the colors in the color bucket, and more awesome pro features!

**[Learn more, Memberships starting at \\$2.50/m!](#)**

**Follow me  
on Twitter!**

@ConvertingColor