

Converting Colors

Hex(FEB7A0)

Have a look what the booklet for
Hex(FEB7A0) contains.

Hex(FEB7A0)	3
<i>Conversions</i>	4
<i>Details</i>	6
<i>Harmonies</i>	11
<i>Previews</i>	23
<i>Color Blindness Simulation</i>	26
<i>CSS Examples</i>	29

Color

Hex(FEB7A0)

Conversions

Conversions Part 1

Format	Color
Hex	FEB7A0
RGB	254, 183, 160
RGB Percent	100%, 72%, 63%
CMY	0.0039, 0.2824, 0.3725
CMYK	0.00, 0.28, 0.37, 0.00
HSL	15°, 98%, 81%
HSV	15°, 37%, 100%
XYZ	64.1517, 57.4759, 40.9705
YIQ	201.6070, 49.6990, 7.8990

Conversions

Conversions Part 2

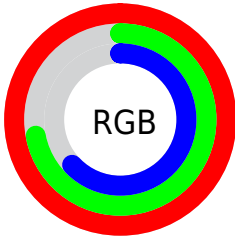
Format	Color
RYB	254, 190, 160
Decimal	16693152
CIELab	80.45, 22.87, 21.90
CIElCh	80, 31.666, 43.752
Yxy	57.4759, 0.3945, 0.3535
Android (android.graphics.Color)	4294883232 (0xFFFE7A0)
YUV	201.6070, -20.5123, 45.9487
Hunter-Lab	75.8128, 18.3716, 21.0277

Details

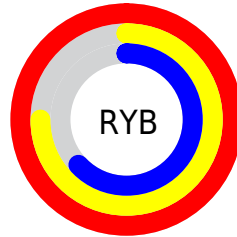
The Hex color **FEB7A0** is a light color, and the websafe version is hex **FFCC99**. A complement of this color would be **A0E7FE**, and the grayscale version is **CACACA**.

A 20% lighter version of the original color is **FFEFD7**, and **C3826C** is the 20% darker color. If you saturate the color by 10%, you get **FEA487**, and if you desaturate by 10%, it is **FECAB9**.

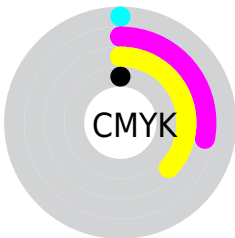
Distribution



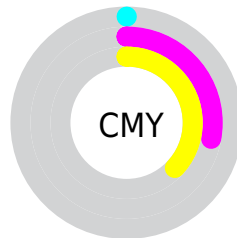
- Red (100%)
- Green (72%)
- Blue (63%)



- Red (100%)
- Yellow (75%)
- Blue (63%)



- Cyan (0%)
- Magenta (28%)
- Yellow (37%)
- Black (0%)



- Cyan (0%)
- Magenta (28%)
- Yellow (37%)

Brightness & Saturation Gradients

These gradients show how the Hex color FEB7A0 changes by changing the brightness by 10 percent. The first figure shows a shift by +10% for each color and the second figure -10%.

Similar to the brightness gradients but the following saturation gradients show a change of the Hex color FEB7A0 by changing the saturation by 10% instead.

 FEB7A0

 FEB7A0

FFFFFF

 E09C86

 FFEFD7

 C3826C

 FFFFF3

 A76854


 8B503D

 703827

 552212

 3C0B00

 250001

 000000

 FEB7A0

 FEB7A0

 FEA487

 FECAB9

 FE916D

 FEDDD3

 FE7D54

 FEF1EC

 FE6A3A

FEFFFF

 FE5721

 FE4408

 FE3E00

Harmonies

Analogous

The Analogous color harmony consists of three colors that are next to each other on the color wheel.



FFB2BB



FEB7A0



EBC08F

Triad

The Triadic color harmony groups three colors that are evenly spaced from another and form a triangle on the color wheel.



FEB7A0



8CD7B6



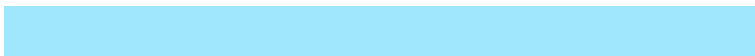
B6C6FF

Complementary

The Complementary color scheme is a pair of colors which are on the opposite of each other on the color wheel.



FEB7A0



A0E7FE

Split Complementary

Split-complementary colors differ from the complementary color scheme. The scheme consists of three colors, the original color and two neighbors of the complement color.



8BCFFF



FEB7A0



71D8D5

Square

The Square scheme is like the rectangle color scheme, but the four colors are evenly spaced on the color wheel.



FEB7A0



AED29C



6FD6EF



DDBBF2

Rectangle

The Rectangle color scheme consists of four colors that form a rectangle on the color wheel.



FEB7A0



D9C78C



6FD6EF



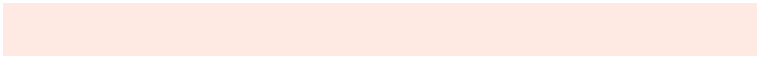
A7C9FF

Sweetspot

The Sweet Spot groups the original color and five complimentary colors.



FEB7A0



FFEAE3



FEA0E8



80736F



000000



808080

Same Dimension

The Same Dimension uses a secret algorithm to generate beautiful new colors.



FEB7A0



FFAA8F



FEE5A0



807673



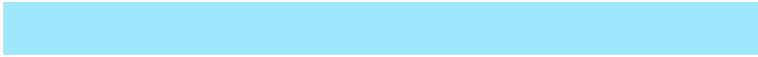
BF2F00



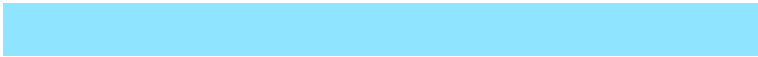
401000

Inverse Universe

The Inverse Universe completely reimagines the original color for something new.



A0E7FE



8FE4FF



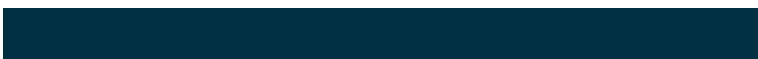
A0B9FE



737C80



0090BF



003040

Previews

White Background



This preview shows how the Hex color FEB7A0 looks on a white background.

Color Contrast Check

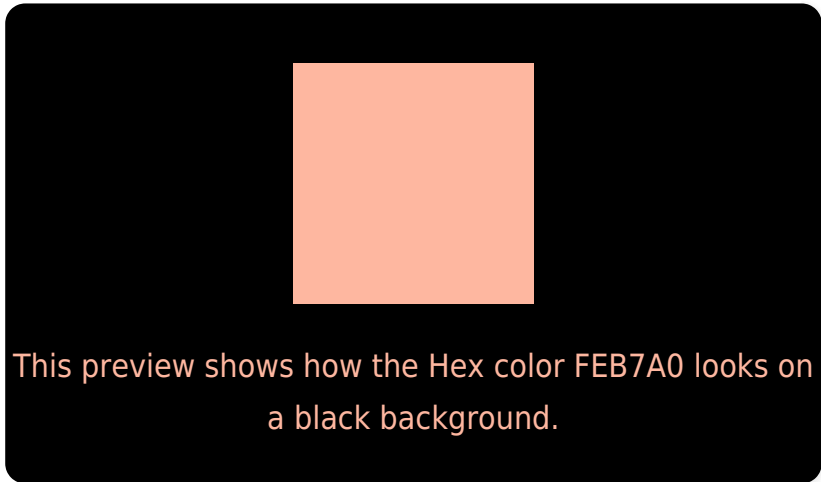
Large Text (above 18pt) WCAG AA × Fail

Any Text WCAG AA × Fail

Large Text (above 18pt) WCAG AAA × Fail

Any Text WCAG AAA × Fail

Black Background



Color Contrast Check

Large Text (above 18pt) WCAG AA ✓ Pass

Any Text WCAG AA ✓ Pass

Large Text (above 18pt) WCAG AAA ✓ Pass

Any Text WCAG AAA ✓ Pass

If you want to check with other color combinations, try the [Color Contrast Checker](#).

Hex FEB7A0 Background



This preview shows how black text looks on a background with the Hex color FEB7A0.

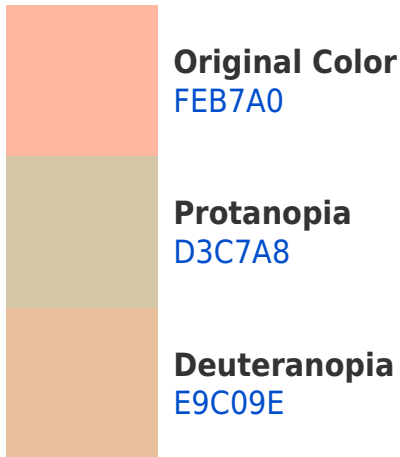


This preview shows how white text looks on a background with the Hex color FEB7A0.

Color Blindness Simulation

Color vision deficiency is a very complex topic, and I could not describe the different causes any better than Wikipedia does, so if you want to learn more, you should check out their [article about color blindness](#).

Dichromacy



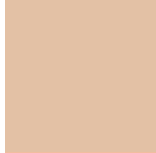


Tritanopia
FFB3C0

Trichromacy



Original Color
FEB7A0



Protanomaly
E3C1A5



Deuteranomaly
F1BD9F

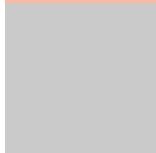


Tritanomaly
FFB4B4

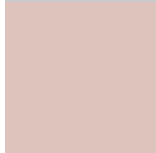
Monochromacy



Original Color
FEB7A0



Achromatopsia
CACACA



Achromatomaly
DDC3BB

CSS Examples

Text

The CSS property to change the color of the text to Hex FEB7A0 is called "color". The color property can be set on classes, ids or directly on the HTML element.

This example shows how text in the color #FEB7A0 looks like.

```
.text, #text, p{  
    color:#FEB7A0  
}
```

If you want to add a text shadow in that color use the text-shadow property, you can generate a text shadow directly with our [CSS Text Shadow Generator](#).

Here you see how black text with a 4 pixel #FEB7A0 colored shadow looks like.

```
.shadow{ text-shadow: 4px 4px 2px #FEB7A0
}
```

Border

The CSS property to change the border of an element to Hex FEB7A0 is called "border". The border property can be set on classes, ids or directly on the HTML element.

This example shows the color as border, it can be applied via the CSS property "border" or "border-color".

```
.border, #border, table{ border:4px solid
#FEB7A0 }
```

If only the border color should be changed use the property `border-color`.

```
.border{ border-color:#FEB7A0 }
```

If you want to add a box shadow in that color use:

Here you see how a box with a 4 pixel #FEB7A0 colored shadow looks like.

```
.boxshadow{ -moz-box-shadow:4px 4px 4px  
4px #FEB7A0; -webkit-box-shadow:4px 4px  
4px 4px #FEB7A0; box-shadow:4px 4px 4px  
4px #FEB7A0 }
```

Background

The CSS property to change the background color of an element to Hex FEB7A0 is called "background". The background property can be set on classes, ids or directly on the HTML element.

```
.background, #background, body{  
background:#FEB7A0 }
```

If only the background color should be changed can be used:

```
.background{ background-color:#FEB7A0 }
```

This example shows the color as background, it is applied via the CSS property "background".

To optimize and compress your CSS code, you can use our [online CSS compressor and optimizer](#) based on csstidy. If you want to create a linear or radial gradient as background or border, check our [CSS Gradient Generator](#).

Hey! You found this booklet interesting? Support Converting Colors with the new Membership Option!

The pro membership hides all ads, plus gives you double the colors in the color bucket, and more awesome pro features!

[Learn more, Memberships starting at \\$2.50/m!](#)

**Follow me
on Twitter!**

@ConvertingColor