

Converting Colors

Hex(FEB8A8)

Have a look what the booklet for
Hex(FEB8A8) contains.

Hex(FEB8A8)	3
<i>Conversions</i>	4
<i>Details</i>	6
<i>Harmonies</i>	11
<i>Previews</i>	23
<i>Color Blindness Simulation</i>	26
<i>CSS Examples</i>	29

Color

Hex(FEB8A8)

Conversions

Conversions Part 1

Format	Color
Hex	FEB8A8
RGB	254, 184, 168
RGB Percent	100%, 72%, 66%
CMY	0.0039, 0.2784, 0.3412
CMYK	0.00, 0.28, 0.34, 0.00
HSL	11°, 98%, 83%
HSV	11°, 34%, 100%
XYZ	65.0814, 58.1790, 44.8453
YIQ	203.1060, 46.8560, 9.8640

Conversions

Conversions Part 2

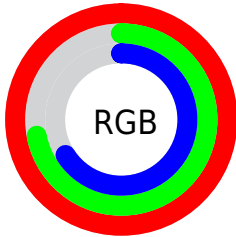
Format	Color
R _Y B	254, 188, 168
Decimal	16693416
CIE Lab	80.84, 23.29, 18.16
CIE LCh	81, 29.535, 37.937
Yxy	58.1790, 0.3871, 0.3461
Android (android.graphics.Color)	4294883496 (0xFFFE8A8)
YUV	203.1060, -17.3073, 44.6340
Hunter-Lab	76.2751, 18.8229, 18.5336

Details

The Hex color **FEB8A8** is a light color, and the websafe version is hex **FFCCCC**. A complement of this color would be **A8EEFE**, and the grayscale version is **CBCBCB**.

A 20% lighter version of the original color is **FFF0DF**, and **C48374** is the 20% darker color. If you saturate the color by 10%, you get **FEA38F**, and if you desaturate by 10%, it is **FECDC1**.

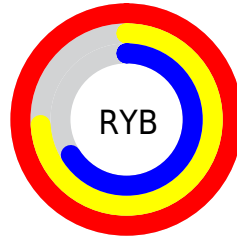
Distribution



Red (100%)

Green (72%)

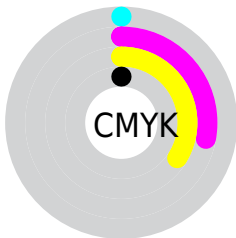
Blue (66%)



Red (100%)

Yellow (74%)

Blue (66%)

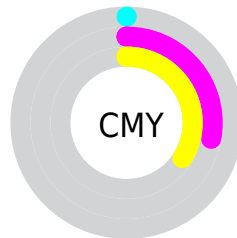


Cyan (0%)

Magenta (28%)

Yellow (34%)

Black (0%)



Cyan (0%)

Magenta (28%)

Yellow (34%)

Brightness & Saturation Gradients

These gradients show how the Hex color FEB8A8 changes by changing the brightness by 10 percent. The first figure shows a shift by +10% for each color and the second figure -10%.

Similar to the brightness gradients but the following saturation gradients show a change of the Hex color FEB8A8 by changing the saturation by 10% instead.

 FEB8A8

FFFFFF

 FFF0DF

FFFFFFC

 FEB8A8

 E19D8E

 C48374

 A7695B

 8C5144

 70392D

 562219

 3D0B00

 270001

 000000

 FEB8A8

 FEB8A8

 FEA38F

 FECDC1

 FE8F75

 FEE1DB

 FE7A5C

 FEF6F4

 FE6542

FEFFFF

 FE5129

 FE3C10

 FE2F00

Harmonies

Analogous

The Analogous color harmony consists of three colors that are next to each other on the color wheel.



FFB4C2



FEB8A8



EFC096

Triad

The Triadic color harmony groups three colors that are evenly spaced from another and form a triangle on the color wheel.



FEB8A8



97D6B3



B1C9FF

Complementary

The Complementary color scheme is a pair of colors which are on the opposite of each other on the color wheel.



FEB8A8



A8EEFE

Split Complementary

Split-complementary colors differ from the complementary color scheme. The scheme consists of three colors, the original color and two neighbors of the complement color.



8CD1FB



FEB8A8



7ED8CF

Square

The Square scheme is like the rectangle color scheme, but the four colors are evenly spaced on the color wheel.



FEB8A8



B7D19D



77D7EA



D6BFF4

Rectangle

The Rectangle color scheme consists of four colors that form a rectangle on the color wheel.



FEB8A8



DFC692



77D7EA



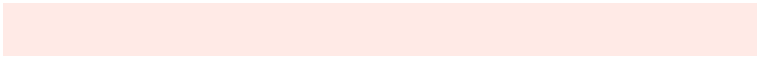
A4CCFF

Sweetspot

The Sweet Spot groups the original color and five complimentary colors.



FEB8A8



FFEAE6



FEA8EE



807370



000000



808080

Same Dimension

The Same Dimension uses a secret algorithm to generate beautiful new colors.



FEB8A8



FFAA96



FEE3A8



807573



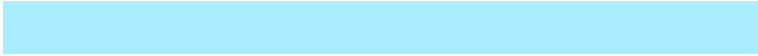
BF2400



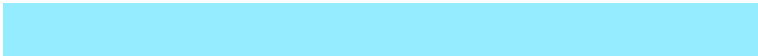
400C00

Inverse Universe

The Inverse Universe completely reimagines the original color for something new.



A8EEFE



96ECFF



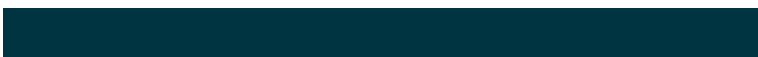
A8C3FE



737D80



009CBF



003440

Previews

White Background



This preview shows how the Hex color FEB8A8 looks on a white background.

Color Contrast Check

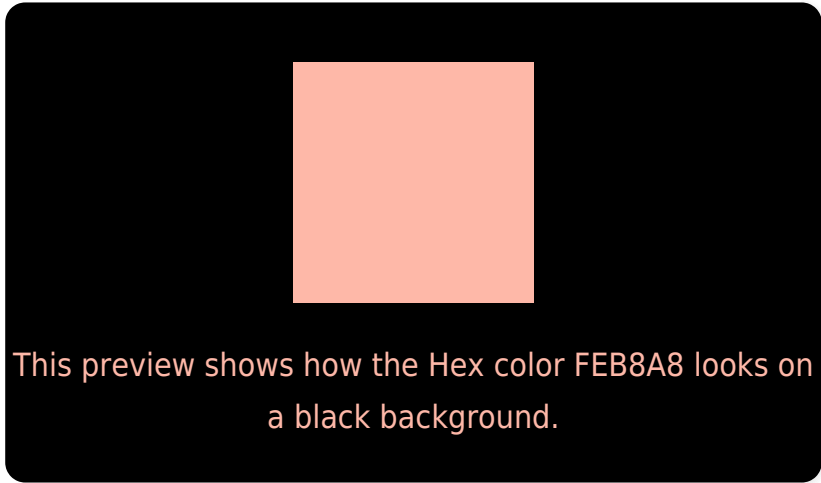
Large Text (above 18pt) WCAG AA × Fail

Any Text WCAG AA × Fail

Large Text (above 18pt) WCAG AAA × Fail

Any Text WCAG AAA × Fail

Black Background



Color Contrast Check

Large Text (above 18pt) WCAG AA ✓ Pass

Any Text WCAG AA ✓ Pass

Large Text (above 18pt) WCAG AAA ✓ Pass

Any Text WCAG AAA ✓ Pass

If you want to check with other color combinations, try the [Color Contrast Checker](#).

Hex FEB8A8 Background



This preview shows how black text looks on a background with the Hex color FEB8A8.

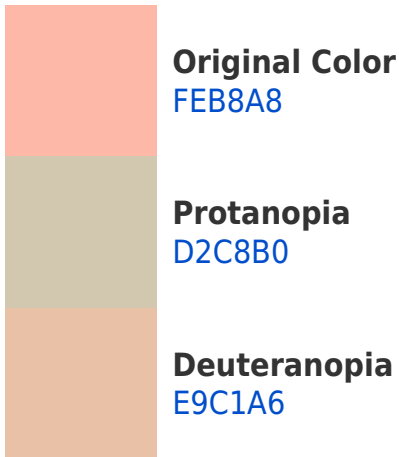


This preview shows how white text looks on a background with the Hex color FEB8A8.

Color Blindness Simulation

Color vision deficiency is a very complex topic, and I could not describe the different causes any better than Wikipedia does, so if you want to learn more, you should check out their [article about color blindness](#).

Dichromacy



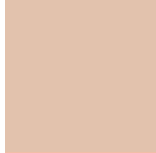


Tritanopia
FFB5C2

Trichromacy



Original Color
FEB8A8



Protanomaly
E2C2AD



Deuteranomaly
F1BEA7

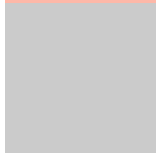


Tritanomaly
FFB6B9

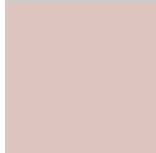
Monochromacy



Original Color
FEB8A8



Achromatopsia
CBCBCB



Achromatomaly
DEC4BE

CSS Examples

Text

The CSS property to change the color of the text to Hex FEB8A8 is called "color". The color property can be set on classes, ids or directly on the HTML element.

This example shows how text in the color #FEB8A8 looks like.

```
.text, #text, p{  
    color:#FEB8A8  
}
```

If you want to add a text shadow in that color use the text-shadow property, you can generate a text shadow directly with our [CSS Text Shadow Generator](#).

Here you see how black text with a 4 pixel #FEB8A8 colored shadow looks like.

```
.shadow{ text-shadow: 4px 4px 2px #FEB8A8
}
```

Border

The CSS property to change the border of an element to Hex FEB8A8 is called "border". The border property can be set on classes, ids or directly on the HTML element.

This example shows the color as border, it can be applied via the CSS property "border" or "border-color".

```
.border, #border, table{ border:4px solid
#FEB8A8 }
```

If only the border color should be changed use the property `border-color`.

```
.border{ border-color:#FEB8A8 }
```

If you want to add a box shadow in that color use:

Here you see how a box with a 4 pixel #FEB8A8 colored shadow looks like.

```
.boxshadow{ -moz-box-shadow:4px 4px 4px  
4px #FEB8A8; -webkit-box-shadow:4px 4px  
4px 4px #FEB8A8; box-shadow:4px 4px 4px  
4px #FEB8A8 }
```

Background

The CSS property to change the background color of an element to Hex FEB8A8 is called "background". The background property can be set on classes, ids or directly on the HTML element.

```
.background, #background, body{  
background:#FEB8A8 }
```

If only the background color should be changed can be used:

```
.background{ background-color:#FEB8A8 }
```

This example shows the color as background, it is applied via the CSS property "background".

To optimize and compress your CSS code, you can use our [online CSS compressor and optimizer](#) based on csstidy. If you want to create a linear or radial gradient as background or border, check our [CSS Gradient Generator](#).

Hey! You found this booklet interesting? Support Converting Colors with the new Membership Option!

The pro membership hides all ads, plus gives you double the colors in the color bucket, and more awesome pro features!

[Learn more, Memberships starting at \\$2.50/m!](#)

**Follow me
on Twitter!**

@ConvertingColor