

Converting Colors

Hex(FEB8B5)

Have a look what the booklet for
Hex(FEB8B5) contains.

Hex(FEB8B5)	3
<i>Conversions</i>	4
<i>Details</i>	6
<i>Harmonies</i>	11
<i>Previews</i>	23
<i>Color Blindness Simulation</i>	26
<i>CSS Examples</i>	29

Color

Hex(FEB8B5)

Conversions

Conversions Part 1

Format	Color
Hex	FEB8B5
RGB	254, 184, 181
RGB Percent	100%, 72%, 71%
CMY	0.0039, 0.2784, 0.2902
CMYK	0.00, 0.28, 0.29, 0.00
HSL	2°, 97%, 85%
HSV	2°, 29%, 100%
XYZ	66.3540, 58.6880, 51.5467
YIQ	204.5880, 42.6830, 13.9070

Conversions

Conversions Part 2

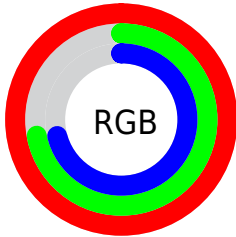
Format	Color
RYB	254, 184, 181
Decimal	16693429
CIELab	81.12, 24.93, 11.57
CIElCh	81, 27.489, 24.898
Yxy	58.6880, 0.3758, 0.3323
Android (android.graphics.Color)	4294883509 (0xFFFE8B5)
YUV	204.5880, -11.6289, 43.3343
Hunter-Lab	76.6081, 20.5434, 13.7316

Details

The Hex color **FEB8B5** is a light color, and the websafe version is hex **FFCCCC**. A complement of this color would be **B5FBFE**, and the grayscale version is **CDCDCD**.

A 20% lighter version of the original color is **FFF0ED**, and **C48380** is the 20% darker color. If you saturate the color by 10%, you get **FEA09C**, and if you desaturate by 10%, it is **FED0CE**.

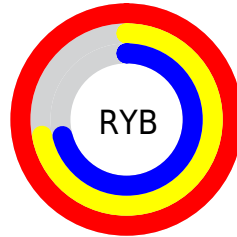
Distribution



Red (100%)

Green (72%)

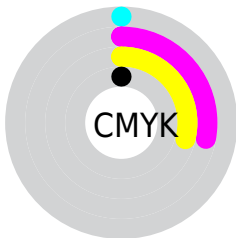
Blue (71%)



Red (100%)

Yellow (72%)

Blue (71%)

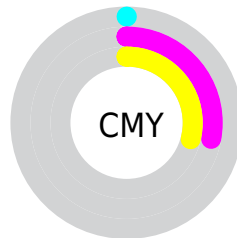


Cyan (0%)

Magenta (28%)

Yellow (29%)

Black (0%)



Cyan (0%)

Magenta (28%)

Yellow (29%)

Brightness & Saturation Gradients

These gradients show how the Hex color FEB8B5 changes by changing the brightness by 10 percent. The first figure shows a shift by +10% for each color and the second figure -10%.

Similar to the brightness gradients but the following saturation gradients show a change of the Hex color FEB8B5 by changing the saturation by 10% instead.

 FEB8B5

 FEB8B5

FFFFFF


 E19D9A

 FFF0ED

 C48380

 A86967

 8C504F

 713938

 572223

 3E0A0E

 280001

 000000

 FEB8B5

 FEB8B5

 FEA09C

 FED0CE

 FE8782

 FEE9E8

 FE6F69

FEFFFF

 FE574F

 FE3E36

 FE261D

 FE0E03

 FE0A00

Harmonies

Analogous

The Analogous color harmony consists of three colors that are next to each other on the color wheel.



F9B7CF



FEB8B5



F5BEA0

Triad

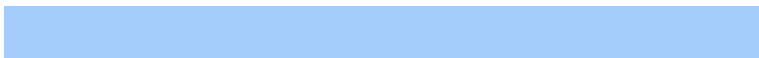
The Triadic color harmony groups three colors that are evenly spaced from another and form a triangle on the color wheel.



FEB8B5



A8D5AB



A4CDFC

Complementary

The Complementary color scheme is a pair of colors which are on the opposite of each other on the color wheel.



FEB8B5



B5FBFE

Split Complementary

Split-complementary colors differ from the complementary color scheme. The scheme consists of three colors, the original color and two neighbors of the complement color.



87D4F3



FEB8B5



8ED8C4

Square

The Square scheme is like the rectangle color scheme, but the four colors are evenly spaced on the color wheel.



FEB8B5



C6CE9A



7FD8DE



C8C4F8

Rectangle

The Rectangle color scheme consists of four colors that form a rectangle on the color wheel.



FEB8B5



E8C398



7FD8DE



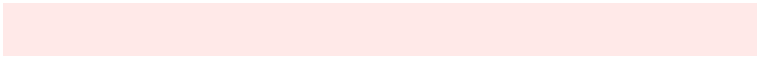
99D0FA

Sweetspot

The Sweet Spot groups the original color and five complimentary colors.



FEB8B5



FFE9E8



FEB5FC



807271



000000



808080

Same Dimension

The Same Dimension uses a secret algorithm to generate beautiful new colors.



FEB8B5



FFACA8



FEDCB5



807373



BF0800



400300

Inverse Universe

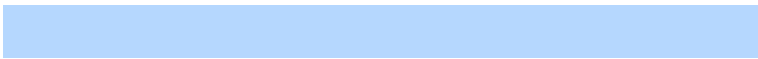
The Inverse Universe completely reimagines the original color for something new.



B5FBFE



A8FBFF



B5D7FE



737F80



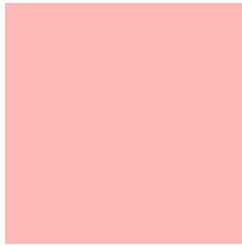
00B7BF



003D40

Previews

White Background



This preview shows how the Hex color FEB8B5 looks on a white background.

Color Contrast Check

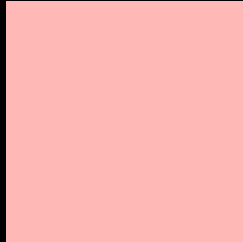
Large Text (above 18pt) WCAG AA × Fail

Any Text WCAG AA × Fail

Large Text (above 18pt) WCAG AAA × Fail

Any Text WCAG AAA × Fail

Black Background



This preview shows how the Hex color FEB8B5 looks on a black background.

Color Contrast Check

Large Text (above 18pt) WCAG AA ✓ Pass

Any Text WCAG AA ✓ Pass

Large Text (above 18pt) WCAG AAA ✓ Pass

Any Text WCAG AAA ✓ Pass

If you want to check with other color combinations, try the [Color Contrast Checker](#).

Hex FEB8B5 Background



This preview shows how black text looks on a background with the Hex color FEB8B5.

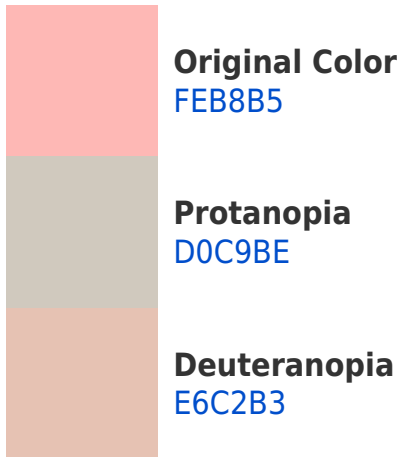


This preview shows how white text looks on a background with the Hex color FEB8B5.

Color Blindness Simulation

Color vision deficiency is a very complex topic, and I could not describe the different causes any better than Wikipedia does, so if you want to learn more, you should check out their [article about color blindness](#).

Dichromacy



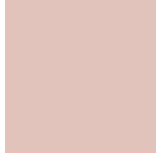


Tritanopia
FFB6C4

Trichromacy



Original Color
FEB8B5



Protanomaly
E1C3BB



Deuteranomaly
EFBEB4

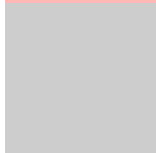


Tritanomaly
FFB7BF

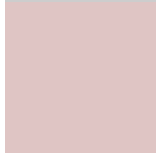
Monochromacy



Original Color
FEB8B5



Achromatopsia
CDCDCD



Achromatomaly
DFC5C4

CSS Examples

Text

The CSS property to change the color of the text to Hex FEB8B5 is called "color". The color property can be set on classes, ids or directly on the HTML element.

This example shows how text in the color #FEB8B5 looks like.

```
.text, #text, p{  
    color:#FEB8B5  
}
```

If you want to add a text shadow in that color use the text-shadow property, you can generate a text shadow directly with our [CSS Text Shadow Generator](#).

Here you see how black text with a 4 pixel #FEB8B5 colored shadow looks like.

```
.shadow{ text-shadow: 4px 4px 2px #FEB8B5
}
```

Border

The CSS property to change the border of an element to Hex FEB8B5 is called "border". The border property can be set on classes, ids or directly on the HTML element.

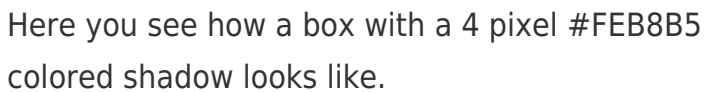
This example shows the color as border, it can be applied via the CSS property "border" or "border-color".

```
.border, #border, table{ border:4px solid
#FEB8B5 }
```

If only the border color should be changed use the property `border-color`.

```
.border{ border-color:#FEB8B5 }
```

If you want to add a box shadow in that color use:



Here you see how a box with a 4 pixel `#FEB8B5` colored shadow looks like.

```
.boxshadow{ -moz-box-shadow:4px 4px 4px  
4px #FEB8B5; -webkit-box-shadow:4px 4px  
4px 4px #FEB8B5; box-shadow:4px 4px 4px  
4px #FEB8B5 }
```

Background

The CSS property to change the background color of an element to Hex FEB8B5 is called "background". The background property can be set on classes, ids or directly on the HTML element.

```
.background, #background, body{  
background:#FEB8B5 }
```

If only the background color should be changed can be used:

```
.background{ background-color:#FEB8B5 }
```

This example shows the color as background, it is applied via the CSS property "background".

To optimize and compress your CSS code, you can use our [online CSS compressor and optimizer](#) based on csstidy. If you want to create a linear or radial gradient as background or border, check our [CSS Gradient Generator](#).

Hey! You found this booklet interesting? Support Converting Colors with the new Membership Option!

The pro membership hides all ads, plus gives you double the colors in the color bucket, and more awesome pro features!

[Learn more, Memberships starting at \\$2.50/m!](#)

**Follow me
on Twitter!**

@ConvertingColor