

Converting Colors

Hex(FEBACB)

Have a look what the booklet for
Hex(FEBACB) contains.

Hex(FEBACB)	3
<i>Conversions</i>	4
<i>Details</i>	6
<i>Harmonies</i>	11
<i>Previews</i>	23
<i>Color Blindness Simulation</i>	26
<i>CSS Examples</i>	29

Color

Hex(FEBACB)

Conversions

Conversions Part 1

Format	Color
Hex	FEBACB
RGB	254, 186, 203
RGB Percent	100%, 73%, 80%
CMY	0.0039, 0.2706, 0.2039
CMYK	0.00, 0.27, 0.20, 0.00
HSL	345°, 97%, 86%
HSV	345°, 27%, 100%
XYZ	69.2114, 60.5004, 64.5298
YIQ	208.2700, 35.0710, 19.7030

Conversions

Conversions Part 2

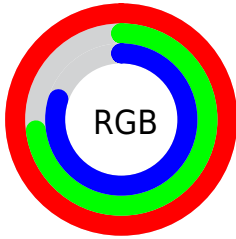
Format	Color
R _Y B	254, 186, 203
Decimal	16693963
CIE _{Lab}	82.11, 26.95, 1.16
CIE _{LCh}	82, 26.971, 2.463
Y _{xy}	60.5004, 0.3563, 0.3115
Android (android.graphics.Color)	4294884043 (0xFFFE _{BACB})
Y _{UV}	208.2700, -2.5981, 40.1052
Hunter-Lab	77.7820, 22.7130, 5.2590

Details

The Hex color **FEBACB** is a light color, and the websafe version is hex **FFCCCC**. A complement of this color would be **BAFEED**, and the grayscale version is **D0D0D0**.

A 20% lighter version of the original color is **FFF3FF**, and **C48495** is the 20% darker color. If you saturate the color by 10%, you get **FEA1B8**, and if you desaturate by 10%, it is **FED3DE**.

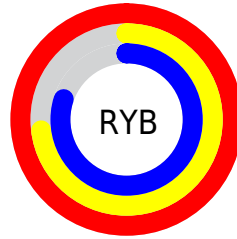
Distribution



Red (100%)

Green (73%)

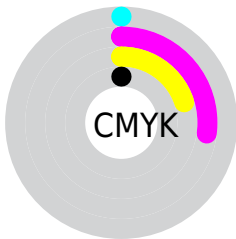
Blue (80%)



Red (100%)

Yellow (73%)

Blue (80%)

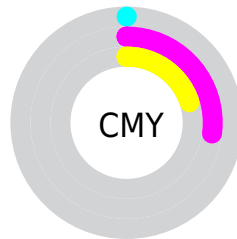


Cyan (0%)

Magenta (27%)

Yellow (20%)

Black (0%)



Cyan (0%)

Magenta (27%)

Yellow (20%)

Brightness & Saturation Gradients

These gradients show how the Hex color FEBACB changes by changing the brightness by 10 percent. The first figure shows a shift by +10% for each color and the second figure -10%.

Similar to the brightness gradients but the following saturation gradients show a change of the Hex color FEBACB by changing the saturation by 10% instead.

 FEBACB

FFFFFF

 FFF3FF

 FEBACB

 E19FB0

 C48495

 A86B7B

 8D5262

 733A4B

 592334

 400B1F

 2B0006

 000000

 FEBACB

 FEBACB

 FEA1B8

 FED3DE

 FE87A5

 FEEDF1

 FE6E92

FEFFFF

 FE547F

 FE3B6C

 FE2259

 FE0846

 FE0040

Harmonies

Analogous

The Analogous color harmony consists of three colors that are next to each other on the color wheel.



EFBDE4



FEBACB



FFBCB2

Triad

The Triadic color harmony groups three colors that are evenly spaced from another and form a triangle on the color wheel.



FEBACB



C1D3A1



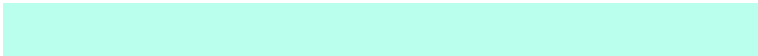
91D5F8

Complementary

The Complementary color scheme is a pair of colors which are on the opposite of each other on the color wheel.



FEBACB



BAFEED

Split Complementary

Split-complementary colors differ from the complementary color scheme. The scheme consists of three colors, the original color and two neighbors of the complement color.



83DAE6



FEBACB



A5D8B4

Square

The Square scheme is like the rectangle color scheme, but the four colors are evenly spaced on the color wheel.



FEBACB



DDCB9A



8CDBCD



B1CEFE

Rectangle

The Rectangle color scheme consists of four colors that form a rectangle on the color wheel.



FEBACB



F8C0A5



8CDBCD



8AD7F3

Sweetspot

The Sweet Spot groups the original color and five complimentary colors.



FEBACB



FFEBF0



EDBAFE



807376



000000



808080

Same Dimension

The Same Dimension uses a secret algorithm to generate beautiful new colors.



FEBACB



FFADC2



FECBBA



807376



BF0030



400010

Inverse Universe

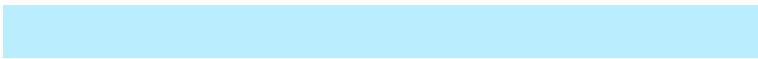
The Inverse Universe completely reimagines the original color for something new.



FEBACB



FFADC2



BAEDFE



807376



BF0030



400010

Previews

White Background



This preview shows how the Hex color FEBACB looks on a white background.

Color Contrast Check

Large Text (above 18pt) WCAG AA × Fail

Any Text WCAG AA × Fail

Large Text (above 18pt) WCAG AAA × Fail

Any Text WCAG AAA × Fail

Black Background



This preview shows how the Hex color FEBACB looks on a black background.

Color Contrast Check

Large Text (above 18pt) WCAG AA ✓ Pass

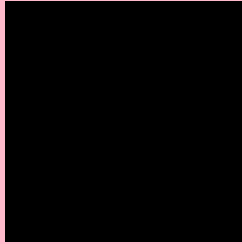
Any Text WCAG AA ✓ Pass

Large Text (above 18pt) WCAG AAA ✓ Pass

Any Text WCAG AAA ✓ Pass

If you want to check with other color combinations, try the [Color Contrast Checker](#).

Hex FEBACB Background



This preview shows how black text looks on a background with the Hex color FEBACB.



This preview shows how white text looks on a background with the Hex color FEBACB.

Color Blindness Simulation

Color vision deficiency is a very complex topic, and I could not describe the different causes any better than Wikipedia does, so if you want to learn more, you should check out their [article about color blindness](#).

Dichromacy



Original Color
FEBACB

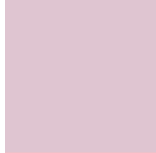
Protanopia
CECBD5

Deuteranopia
E2C6C9

Trichromacy



Original Color
FEBACB



Protanomaly
DFC5D1



Deuteranomaly
ECC2CA

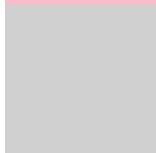


Tritanomaly
FEBACA

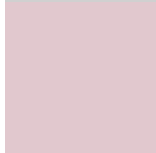
Monochromacy



Original Color
FEBACB



Achromatopsia
D0D0D0



Achromatomaly
E1C8CE

CSS Examples

Text

The CSS property to change the color of the text to Hex FEBACB is called "color". The color property can be set on classes, ids or directly on the HTML element.

This example shows how text in the color #FEBACB looks like.

```
.text, #text, p{  
    color:#FEBACB  
}
```

If you want to add a text shadow in that color use the text-shadow property, you can generate a text shadow directly with our [CSS Text Shadow Generator](#).

Here you see how black text with a 4 pixel #FEBACB colored shadow looks like.

```
.shadow{ text-shadow: 4px 4px 2px #FEBACB
}
```

Border

The CSS property to change the border of an element to Hex FEBACB is called "border". The border property can be set on classes, ids or directly on the HTML element.

This example shows the color as border, it can be applied via the CSS property "border" or "border-color".

```
.border, #border, table{ border:4px solid
#FEBACB }
```

If only the border color should be changed use the property `border-color`.

```
.border{ border-color:#FEBACB }
```

If you want to add a box shadow in that color use:

Here you see how a box with a 4 pixel #FEBACB colored shadow looks like.

```
.boxshadow{ -moz-box-shadow:4px 4px 4px  
4px #FEBACB; -webkit-box-shadow:4px 4px  
4px 4px #FEBACB; box-shadow:4px 4px 4px  
4px #FEBACB }
```

Background

The CSS property to change the background color of an element to Hex FEBACB is called "background". The background property can be set on classes, ids or directly on the HTML element.

```
.background, #background, body{  
background:#FEBACB }
```

If only the background color should be changed can be used:

```
.background{ background-color:#FEBACB }
```

This example shows the color as background, it is applied via the CSS property "background".

To optimize and compress your CSS code, you can use our [online CSS compressor and optimizer](#) based on csstidy. If you want to create a linear or radial gradient as background or border, check our [CSS Gradient Generator](#).

Hey! You found this booklet interesting? Support Converting Colors with the new Membership Option!

The pro membership hides all ads, plus gives you double the colors in the color bucket, and more awesome pro features!

[Learn more, Memberships starting at \\$2.50/m!](#)

**Follow me
on Twitter!**

@ConvertingColor