

Converting Colors

Hex(FEBEEE)

Have a look what the booklet for
Hex(FEBEEE) contains.

Hex(FEBEEE)	3
<i>Conversions</i>	4
<i>Details</i>	6
<i>Harmonies</i>	11
<i>Previews</i>	23
<i>Color Blindness Simulation</i>	26
<i>CSS Examples</i>	29

Color

Hex(FEBEEE)

Conversions

Conversions Part 1

Format	Color
Hex	FEBEEE
RGB	254, 190, 238
RGB Percent	100%, 75%, 93%
CMY	0.0039, 0.2549, 0.0667
CMYK	0.00, 0.25, 0.06, 0.00
HSL	315°, 97%, 87%
HSV	315°, 25%, 100%
XYZ	74.7191, 64.0708, 89.3177
YIQ	214.6080, 22.7360, 28.4960

Conversions

Conversions Part 2

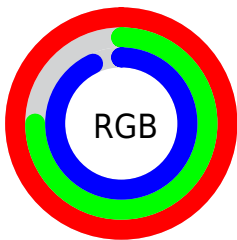
Format	Color
RYB	254, 190, 238
Decimal	16695022
CIELab	84.00, 30.41, -14.80
CIELCh	84, 33.826, 334.047
Yxy	64.0708, 0.3276, 0.2809
Android (android.graphics.Color)	4294885102 (0xFFFEBEEE)
YUV	214.6080, 11.5323, 34.5468
Hunter-Lab	80.0442, 26.5475, -10.1280

Details

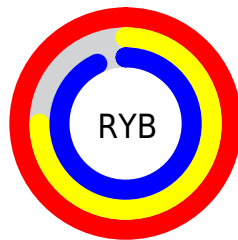
The Hex color **FEBEEE** is a light color, and the websafe version is hex **FFCCFF**. A complement of this color would be **BEFECE**, and the grayscale version is **D6D6D6**.

A 20% lighter version of the original color is **FFF7FF**, and **C588B6** is the 20% darker color. If you saturate the color by 10%, you get **FEA5E8**, and if you desaturate by 10%, it is **FED7F4**.

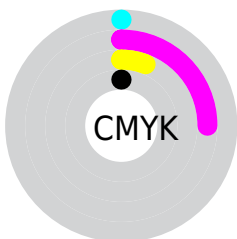
Distribution



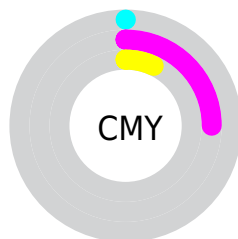
- Red (100%)
- Green (75%)
- Blue (93%)



- Red (100%)
- Yellow (75%)
- Blue (93%)



- Cyan (0%)
- Magenta (25%)
- Yellow (6%)
- Black (0%)



- Cyan (0%)
- Magenta (25%)
- Yellow (7%)

Brightness & Saturation Gradients

These gradients show how the Hex color FEBEEE changes by changing the brightness by 10 percent. The first figure shows a shift by +10% for each color and the second figure -10%.

Similar to the brightness gradients but the following saturation gradients show a change of the Hex color FEBEEE by changing the saturation by 10% instead.

 FEBEEE

FFFFFF

 FFF7FF

 FEBEEE

 E1A3D2

 C588B6

 A96E9B

 8E5581

 743D68

 5A2550

 420D39

 2B0023

 07000B

 #FEBEEE

 #FEBEEE

 #FEA5E8

 #FED7F4

 #FE8BE1

 #FEF1FB

 #FE72DB

#FEFFFF

 #FE58D5

 #FE3FCE

 #FE26C8

 #FE0CC2

 #FE00BF

Harmonies

Analogous

The Analogous color harmony consists of three colors that are next to each other on the color wheel.



DCC8FF



FEBEEE



FFBACE

Triad

The Triadic color harmony groups three colors that are evenly spaced from another and form a triangle on the color wheel.



FEBEEE



E4D192



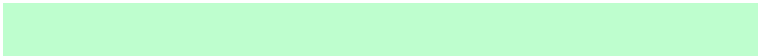
6DE2F4

Complementary

The Complementary color scheme is a pair of colors which are on the opposite of each other on the color wheel.



FEBEEE



BEFECE

Split Complementary

Split-complementary colors differ from the complementary color scheme. The scheme consists of three colors, the original color and two neighbors of the complement color.



7BE3D5



FEBEEE



C1DA9C

Square

The Square scheme is like the rectangle color scheme, but the four colors are evenly spaced on the color wheel.



FEBEEE



FFC699



9CE1B5



83DCFF

Rectangle

The Rectangle color scheme consists of four colors that form a rectangle on the color wheel.



FEBEEE



FFBBB9



9CE1B5



6EE3EA

Sweetspot

The Sweet Spot groups the original color and five complimentary colors.



FEBEEE



FFEBFA



CEBEFE



80737C



000000



808080

Same Dimension

The Same Dimension uses a secret algorithm to generate beautiful new colors.



FEBEEE



FFB3EC



FEBECE



80737C



BF008F



400030

Inverse Universe

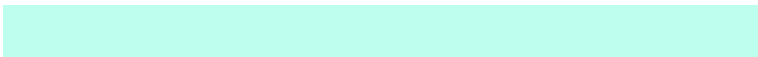
The Inverse Universe completely reimagines the original color for something new.



FEBEEE



FFB3EC



BEFEEE



80737C



BF008F



400030

Previews

White Background



This preview shows how the Hex color FEBEEE looks on a white background.

Color Contrast Check

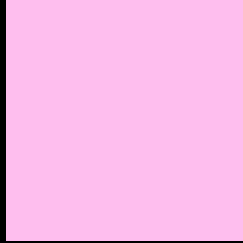
Large Text (above 18pt) WCAG AA × Fail

Any Text WCAG AA × Fail

Large Text (above 18pt) WCAG AAA × Fail

Any Text WCAG AAA × Fail

Black Background



This preview shows how the Hex color FEBEEE looks on a black background.

Color Contrast Check

Large Text (above 18pt) WCAG AA ✓ Pass

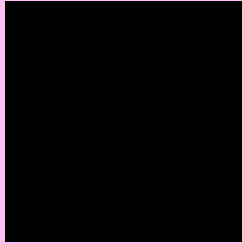
Any Text WCAG AA ✓ Pass

Large Text (above 18pt) WCAG AAA ✓ Pass

Any Text WCAG AAA ✓ Pass

If you want to check with other color combinations, try the [Color Contrast Checker](#).

Hex FEBEEE Background



This preview shows how black text looks on a background with the Hex color FEBEEE.



This preview shows how white text looks on a background with the Hex color FEBEEE.

Color Blindness Simulation

Color vision deficiency is a very complex topic, and I could not describe the different causes any better than Wikipedia does, so if you want to learn more, you should check out their [article about color blindness](#).

Dichromacy



Trichromacy



Original Color
FEBEEE



Protanomaly
DCC9F6



Deuteranomaly
E7C7EC

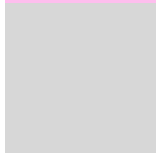


Tritanomaly
FBC1DC

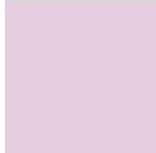
Monochromacy



Original Color
FEBEEE



Achromatopsia
D7D7D7



Achromatomaly
E5CEDF

CSS Examples

Text

The CSS property to change the color of the text to Hex FEBEEE is called "color". The color property can be set on classes, ids or directly on the HTML element.

This example shows how text in the color #FEBEEE looks like.

```
.text, #text, p{  
    color:#FEBEEE  
}
```

If you want to add a text shadow in that color use the text-shadow property, you can generate a text shadow directly with our [CSS Text Shadow Generator](#).

Here you see how black text with a 4 pixel #FEBEEE colored shadow looks like.

```
.shadow{ text-shadow: 4px 4px 2px #FEBEEE
}
```

Border

The CSS property to change the border of an element to Hex FEBEEE is called "border". The border property can be set on classes, ids or directly on the HTML element.

This example shows the color as border, it can be applied via the CSS property "border" or "border-color".

```
.border, #border, table{ border:4px solid
#FEBEEE }
```

If only the border color should be changed use the property `border-color`.

```
.border{ border-color:#FEBEEE }
```

If you want to add a box shadow in that color use:

Here you see how a box with a 4 pixel #FEBEEE colored shadow looks like.

```
.boxshadow{ -moz-box-shadow:4px 4px 4px  
4px #FEBEEE; -webkit-box-shadow:4px 4px  
4px 4px #FEBEEE; box-shadow:4px 4px 4px  
4px #FEBEEE }
```

Background

The CSS property to change the background color of an element to Hex FEBEEE is called "background". The background property can be set on classes, ids or directly on the HTML element.

```
.background, #background, body{  
background:#FEBEEE }
```

If only the background color should be changed can be used:

```
.background{ background-color:#FEBEEE }
```

This example shows the color as background, it is applied via the CSS property "background".

To optimize and compress your CSS code, you can use our [online CSS compressor and optimizer](#) based on csstidy. If you want to create a linear or radial gradient as background or border, check our [CSS Gradient Generator](#).

Hey! You found this booklet interesting? Support Converting Colors with the new Membership Option!

The pro membership hides all ads, plus gives you double the colors in the color bucket, and more awesome pro features!

[Learn more, Memberships starting at \\$2.50/m!](#)

**Follow me
on Twitter!**

@ConvertingColor