

# Converting Colors

Hex(FEC3C9)

Have a look what the booklet for  
Hex(FEC3C9) contains.

<b>Hex(FEC3C9)</b> .....	3
<i><b>Conversions</b></i> .....	4
<i><b>Details</b></i> .....	6
<i><b>Harmonies</b></i> .....	11
<i><b>Previews</b></i> .....	23
<i><b>Color Blindness Simulation</b></i> .....	26
<i><b>CSS Examples</b></i> .....	29

# **Color**

**Hex(FEC3C9)**

# Conversions

## Conversions Part 1

Format	Color
Hex	FEC3C9
RGB	254, 195, 201
RGB Percent	100%, 76%, 79%
CMY	0.0039, 0.2353, 0.2118
CMYK	0.00, 0.23, 0.21, 0.00
HSL	354°, 97%, 88%
HSV	354°, 23%, 100%
XYZ	70.9308, 64.3181, 63.9345
YIQ	213.3250, 33.2380, 14.3740

# Conversions

## Conversions Part 2

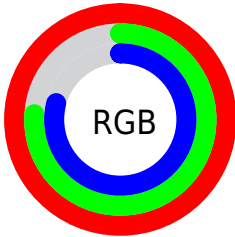
<b>Format</b>	<b>Color</b>
R <sub>Y</sub> B	254, 195, 201
Decimal	16696265
CIE Lab	84.13, 21.93, 5.16
CIE LCh	84, 22.526, 13.250
Yxy	64.3181, 0.3561, 0.3229
Android (android.graphics.Color)	4294886345 (0xFFFE3C9)
YUV	213.3250, -6.0762, 35.6720
Hunter-Lab	80.1986, 17.5250, 8.8728

# Details

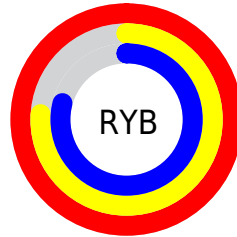
The Hex color **FEC3C9** is a light color, and the websafe version is hex **FFCCCC**. A complement of this color would be **C3FEF8**, and the grayscale version is **D5D5D5**.

A 20% lighter version of the original color is **FFFCFF**, and **C48D93** is the 20% darker color. If you saturate the color by 10%, you get **FEAAB2**, and if you desaturate by 10%, it is **FEDCE0**.

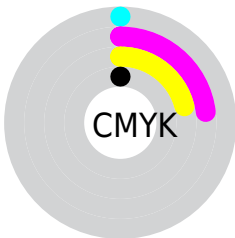
# Distribution



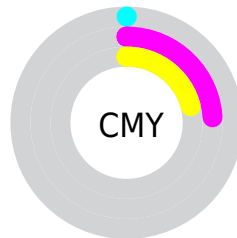
- Red (100%)
- Green (76%)
- Blue (79%)



- Red (100%)
- Yellow (76%)
- Blue (79%)



- Cyan (0%)
- Magenta (23%)
- Yellow (21%)
- Black (0%)



- Cyan (0%)
- Magenta (24%)
- Yellow (21%)

# Brightness & Saturation Gradients

These gradients show how the Hex color FEC3C9 changes by changing the brightness by 10 percent. The first figure shows a shift by +10% for each color and the second figure -10%.

Similar to the brightness gradients but the following saturation gradients show a change of the Hex color FEC3C9 by changing the saturation by 10% instead.



 FEC3C9

 FEC3C9

FFFFFF

 E1A8AE

 FFFCFF

 C48D93

 A97379

 8D5A61

 734249

 592B32

 41151E

 2B0003

 000000

 FEC3C9

 FEC3C9

 FEAAB2

 FEDCE0

 FE909B

 FEF6F7

 FE7785

FEFFFF

 FE5D6E

 FE4457

 FE2B40

 FE1129

 FE001A

# Harmonies

## Analogous

The Analogous color harmony consists of three colors that are next to each other on the color wheel.



F5C4DF



FEC3C9



FBC6B6

# Triad

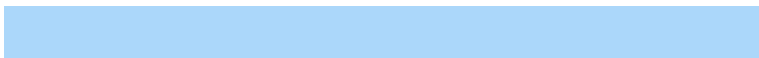
The Triadic color harmony groups three colors that are evenly spaced from another and form a triangle on the color wheel.



FEC3C9



C0D9B2



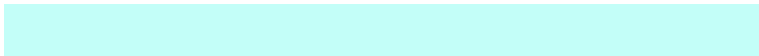
ABD7FA

# Complementary

The Complementary color scheme is a pair of colors which are on the opposite of each other on the color wheel.



FEC3C9



C3FEF8

# Split Complementary

Split-complementary colors differ from the complementary color scheme. The scheme consists of three colors, the original color and two neighbors of the complement color.



9ADCEE



FEC3C9



A9DDC5

# Square

The Square scheme is like the rectangle color scheme, but the four colors are evenly spaced on the color wheel.



FEC3C9



D8D3A8



9AEDDB



C6D1FB

# Rectangle

The Rectangle color scheme consists of four colors that form a rectangle on the color wheel.



FEC3C9



F3CAAD



9AEDDB



A4D9F7

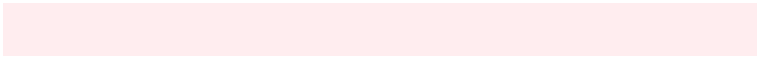


# Sweetspot

The Sweet Spot groups the original color and five complimentary colors.



FEC3C9



FFEDEF



F7C3FE



807576



000000



808080



# Same Dimension

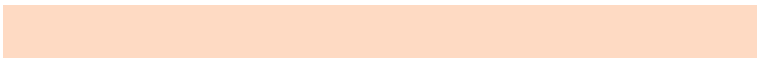
The Same Dimension uses a secret algorithm to generate beautiful new colors.



FEC3C9



FFB8BF



FEDAC3



807374



BF0013



400006



# Inverse Universe

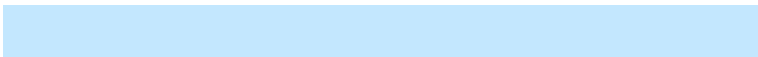
The Inverse Universe completely reimagines the original color for something new.



FEC3C9



FFB8BF



C3E7FE



807374



BF0013



400006



# Previews

## White Background



This preview shows how the Hex color FEC3C9 looks on a white background.

## Color Contrast Check

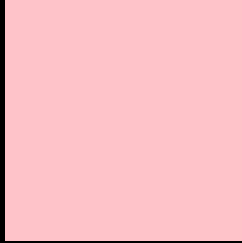
Large Text (above 18pt) WCAG AA × Fail

Any Text WCAG AA × Fail

Large Text (above 18pt) WCAG AAA × Fail

Any Text WCAG AAA × Fail

# Black Background



This preview shows how the Hex color FEC3C9 looks on a black background.

## Color Contrast Check

Large Text (above 18pt) WCAG AA ✓ Pass

Any Text WCAG AA ✓ Pass

Large Text (above 18pt) WCAG AAA ✓ Pass

Any Text WCAG AAA ✓ Pass

If you want to check with other color combinations, try the [Color Contrast Checker](#).



## Hex FEC3C9 Background



This preview shows how black text looks on a background with the Hex color FEC3C9.

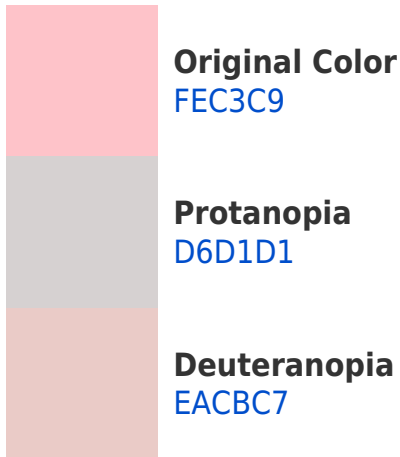


This preview shows how white text looks on a background with the Hex color FEC3C9.

# Color Blindness Simulation

Color vision deficiency is a very complex topic, and I could not describe the different causes any better than Wikipedia does, so if you want to learn more, you should check out their [article about color blindness](#).

## Dichromacy



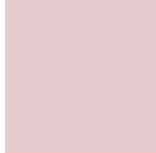


**Tritanopia**  
FFC2D1

# Trichromacy



**Original Color**  
FEC3C9



**Protanomaly**  
E5CCCE



**Deuteranomaly**  
F1C8C8

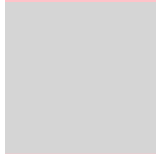


**Tritanomaly**  
FFC2CE

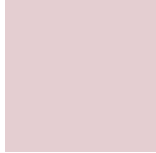
# Monochromacy



**Original Color**  
FEC3C9



**Achromatopsia**  
D5D5D5



**Achromatomaly**  
E4CED1

# CSS Examples

## Text

The CSS property to change the color of the text to Hex FEC3C9 is called "color". The color property can be set on classes, ids or directly on the HTML element.

This example shows how text in the color #FEC3C9 looks like.

```
.text, #text, p{  
    color:#FEC3C9  
}
```

If you want to add a text shadow in that color use the text-shadow property, you can generate a text shadow directly with our [CSS Text Shadow Generator](#).

Here you see how black text with a 4 pixel #FEC3C9 colored shadow looks like.

```
.shadow{ text-shadow: 4px 4px 2px #FEC3C9
}
```

## Border

The CSS property to change the border of an element to Hex FEC3C9 is called "border". The border property can be set on classes, ids or directly on the HTML element.

This example shows the color as border, it can be applied via the CSS property "border" or "border-color".

```
.border, #border, table{ border:4px solid
#FEC3C9 }
```

If only the border color should be changed use the property `border-color`.

```
.border{ border-color:#FEC3C9 }
```

If you want to add a box shadow in that color use:

Here you see how a box with a 4 pixel #FEC3C9 colored shadow looks like.

```
.boxshadow{ -moz-box-shadow:4px 4px 4px  
4px #FEC3C9; -webkit-box-shadow:4px 4px  
4px 4px #FEC3C9; box-shadow:4px 4px 4px  
4px #FEC3C9 }
```

# Background

The CSS property to change the background color of an element to Hex FEC3C9 is called "background". The background property can be set on classes, ids or directly on the HTML element.

```
.background, #background, body{  
background:#FEC3C9 }
```

If only the background color should be changed can be used:

```
.background{ background-color:#FEC3C9 }
```

This example shows the color as background, it is applied via the CSS property "background".

To optimize and compress your CSS code, you can use our [online CSS compressor and optimizer](#) based on csstidy. If you want to create a linear or radial gradient as background or border, check our [CSS Gradient Generator](#).



Hey! You found this booklet interesting? Support Converting Colors with the new Membership Option!

The pro membership hides all ads, plus gives you double the colors in the color bucket, and more awesome pro features!

**[Learn more, Memberships starting at \\$2.50/m!](#)**

**Follow me  
on Twitter!**

@ConvertingColor