

# Converting Colors

Hex(FEC3D4)

Have a look what the booklet for  
Hex(FEC3D4) contains.

<b>Hex(FEC3D4)</b> .....	3
<i><b>Conversions</b></i> .....	4
<i><b>Details</b></i> .....	6
<i><b>Harmonies</b></i> .....	11
<i><b>Previews</b></i> .....	23
<i><b>Color Blindness Simulation</b></i> .....	26
<i><b>CSS Examples</b></i> .....	29

# **Color**

**Hex(FEC3D4)**

# Conversions

## Conversions Part 1

Format	Color
Hex	FEC3D4
RGB	254, 195, 212
RGB Percent	100%, 76%, 83%
CMY	0.0039, 0.2353, 0.1686
CMYK	0.00, 0.23, 0.17, 0.00
HSL	343°, 97%, 88%
HSV	343°, 23%, 100%
XYZ	72.2718, 64.8545, 70.9964
YIQ	214.5790, 29.7070, 17.7950

# Conversions

## Conversions Part 2

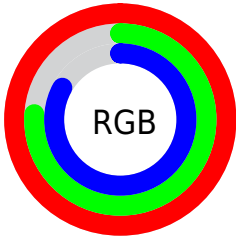
Format	Color
<a href="#">RYB</a>	<a href="#">254, 195, 212</a>
Decimal	<a href="#">16696276</a>
CIELab	<a href="#">84.41, 23.57, -0.31</a>
CIELCh	<a href="#">84, 23.572, 359.245</a>
Yxy	<a href="#">64.8545, 0.3473, 0.3116</a>
Android (android.graphics.Color)	<a href="#">4294886356</a> ( <a href="#">0xFFFE3D4</a> )
YUV	<a href="#">214.5790, -1.2714, 34.5722</a>
Hunter-Lab	<a href="#">80.5323, 19.2591, 4.1032</a>

# Details

The Hex color **FEC3D4** is a light color, and the websafe version is hex **FFCCCC**. A complement of this color would be **C3FEED**, and the grayscale version is **D7D7D7**.

A 20% lighter version of the original color is **FFFCFF**, and **C58D9D** is the 20% darker color. If you saturate the color by 10%, you get **FEAAC2**, and if you desaturate by 10%, it is **FEDCE6**.

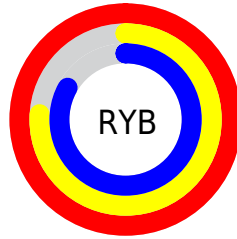
# Distribution



Red (100%)

Green (76%)

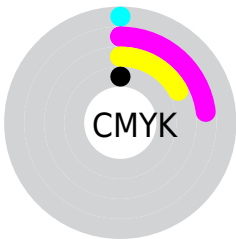
Blue (83%)



Red (100%)

Yellow (76%)

Blue (83%)

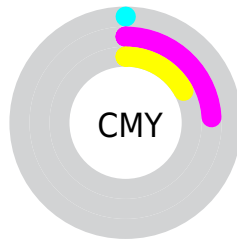


Cyan (0%)

Magenta (23%)

Yellow (17%)

Black (0%)



Cyan (0%)

Magenta (24%)

Yellow (17%)

# Brightness & Saturation Gradients

These gradients show how the Hex color FEC3D4 changes by changing the brightness by 10 percent. The first figure shows a shift by +10% for each color and the second figure -10%.

Similar to the brightness gradients but the following saturation gradients show a change of the Hex color FEC3D4 by changing the saturation by 10% instead.



 FEC3D4

 FEC3D4

FFFFFF

 E1A8B8

 FFFCFF


 C58D9D

 A97383

 8E5A6A

 744252

 5A2B3B

 411526

 2B0011

 000000

 FEC3D4

 FEC3D4

 FEAAC2

 FEDCE6

 FE90B0

 FEF6F8

 FE779E

FEFFFF

 FE5D8C

 FE447A

 FE2B68

 FE1155

 FE0049

# Harmonies

## Analogous

The Analogous color harmony consists of three colors that are next to each other on the color wheel.



EFC6EA



FEC3D4



FFC4BE

# Triad

The Triadic color harmony groups three colors that are evenly spaced from another and form a triangle on the color wheel.



FEC3D4



CCD8AC



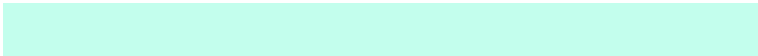
9FDBF8

# Complementary

The Complementary color scheme is a pair of colors which are on the opposite of each other on the color wheel.



FEC3D4



C3FEED

# Split Complementary

Split-complementary colors differ from the complementary color scheme. The scheme consists of three colors, the original color and two neighbors of the complement color.



95DFE7



FEC3D4



B3DDBB

# Square

The Square scheme is like the rectangle color scheme, but the four colors are evenly spaced on the color wheel.



FEC3D4



E4D1A6



9EDFD1



B8D5FF

# Rectangle

The Rectangle color scheme consists of four colors that form a rectangle on the color wheel.



FEC3D4



FBC8B2



9EDFD1



9ADDF4



# Sweetspot

The Sweet Spot groups the original color and five complimentary colors.



FEC3D4



FFEDF2



ECC3FE



807578



000000



808080



# Same Dimension

The Same Dimension uses a secret algorithm to generate beautiful new colors.



FEC3D4



FFB8CC



FECFC3



807376



BF0037



400012



# Inverse Universe

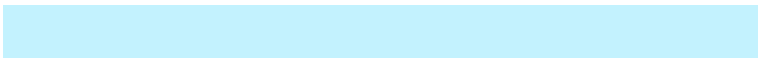
The Inverse Universe completely reimagines the original color for something new.



FEC3D4



FFB8CC



C3F2FE



807376



BF0037



400012



# Previews

## White Background



This preview shows how the Hex color FEC3D4 looks on a white background.

## Color Contrast Check

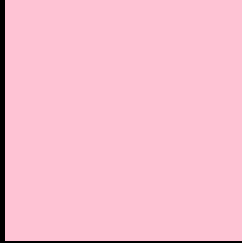
Large Text (above 18pt) WCAG AA × Fail

Any Text WCAG AA × Fail

Large Text (above 18pt) WCAG AAA × Fail

Any Text WCAG AAA × Fail

# Black Background



This preview shows how the Hex color FEC3D4 looks on a black background.

## Color Contrast Check

Large Text (above 18pt) WCAG AA ✓ Pass

Any Text WCAG AA ✓ Pass

Large Text (above 18pt) WCAG AAA ✓ Pass

Any Text WCAG AAA ✓ Pass

If you want to check with other color combinations, try the [Color Contrast Checker](#).



## Hex FEC3D4 Background



This preview shows how black text looks on a background with the Hex color FEC3D4.

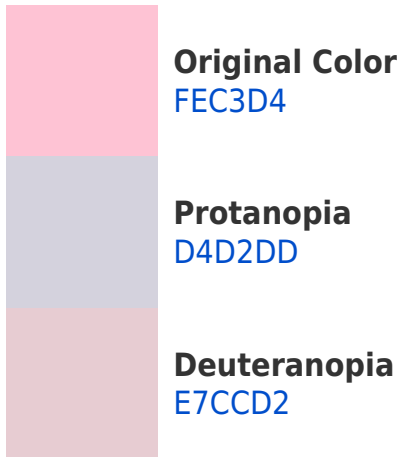


This preview shows how white text looks on a background with the Hex color FEC3D4.

# Color Blindness Simulation

Color vision deficiency is a very complex topic, and I could not describe the different causes any better than Wikipedia does, so if you want to learn more, you should check out their [article about color blindness](#).

## Dichromacy



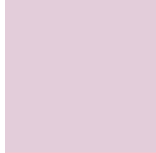


**Tritanopia**  
FEC3D2

# Trichromacy



**Original Color**  
FEC3D4



**Protanomaly**  
E3CDDA



**Deuteranomaly**  
EFC9D3

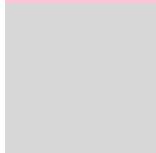


**Tritanomaly**  
FEC3D3

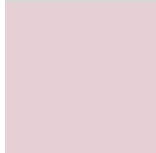
# Monochromacy



**Original Color**  
FEC3D4



**Achromatopsia**  
D7D7D7



**Achromatomaly**  
E5D0D6

# CSS Examples

## Text

The CSS property to change the color of the text to Hex FEC3D4 is called "color". The color property can be set on classes, ids or directly on the HTML element.

This example shows how text in the color #FEC3D4 looks like.

```
.text, #text, p{  
    color:#FEC3D4  
}
```

If you want to add a text shadow in that color use the text-shadow property, you can generate a text shadow directly with our [CSS Text Shadow Generator](#).

Here you see how black text with a 4 pixel #FEC3D4 colored shadow looks like.

```
.shadow{ text-shadow: 4px 4px 2px #FEC3D4
}
```

## Border

The CSS property to change the border of an element to Hex FEC3D4 is called "border". The border property can be set on classes, ids or directly on the HTML element.

This example shows the color as border, it can be applied via the CSS property "border" or "border-color".

```
.border, #border, table{ border:4px solid
#FEC3D4 }
```

If only the border color should be changed use the property `border-color`.

```
.border{ border-color:#FEC3D4 }
```

If you want to add a box shadow in that color use:

Here you see how a box with a 4 pixel #FEC3D4 colored shadow looks like.

```
.boxshadow{ -moz-box-shadow:4px 4px 4px  
4px #FEC3D4; -webkit-box-shadow:4px 4px  
4px 4px #FEC3D4; box-shadow:4px 4px 4px  
4px #FEC3D4 }
```

# Background

The CSS property to change the background color of an element to Hex FEC3D4 is called "background". The background property can be set on classes, ids or directly on the HTML element.

```
.background, #background, body{  
background:#FEC3D4 }
```

If only the background color should be changed can be used:

```
.background{ background-color:#FEC3D4 }
```

This example shows the color as background, it is applied via the CSS property "background".

To optimize and compress your CSS code, you can use our [online CSS compressor and optimizer](#) based on csstidy. If you want to create a linear or radial gradient as background or border, check our [CSS Gradient Generator](#).



Hey! You found this booklet interesting? Support Converting Colors with the new Membership Option!

The pro membership hides all ads, plus gives you double the colors in the color bucket, and more awesome pro features!

**[Learn more, Memberships starting at \\$2.50/m!](#)**

**Follow me  
on Twitter!**

@ConvertingColor