

Converting Colors

Hex(FED0DA)

Have a look what the booklet for
Hex(FED0DA) contains.

| | |
|--|----|
| Hex(FED0DA) | 3 |
| <i>Conversions</i> | 4 |
| <i>Details</i> | 6 |
| <i>Harmonies</i> | 11 |
| <i>Previews</i> | 23 |
| <i>Color Blindness Simulation</i> | 26 |
| <i>CSS Examples</i> | 29 |

Color

Hex(FED0DA)

Conversions

Conversions Part 1

| Format | Color |
|-------------|----------------------------|
| Hex | FED0DA |
| RGB | 254, 208, 218 |
| RGB Percent | 100%, 82%, 85% |
| CMY | 0.0039, 0.1843, 0.1451 |
| CMYK | 0.00, 0.18, 0.14, 0.00 |
| HSL | 347°, 96%, 91% |
| HSV | 347°, 18%, 100% |
| XYZ | 76.0838, 71.2445, 76.0712 |
| YIQ | 222.8940, 24.2060, 12.8620 |

Conversions

Conversions Part 2

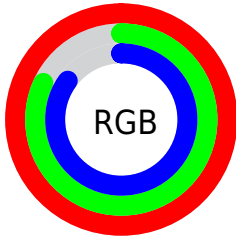
| Format | Color |
|-------------------------------------|-------------------------------|
| R_{YB} | 254, 208, 218 |
| Decimal | 16699610 |
| CIE _{Lab} | 87.60, 17.69, 1.16 |
| CIE _{LCh} | 88, 17.723, 3.754 |
| Yxy | 71.2445, 0.3406, 0.3189 |
| Android (android.graphics.Color) | 4294889690 (0xFFFE00DA) |
| YUV | 222.8940, -2.4127, 27.2800 |
| Hunter-Lab | 84.4065, 13.1882, 5.6495 |

Details

The Hex color **FED0DA** is a light color, and the websafe version is hex **FFCCCC**. A complement of this color would be **D0FEF4**, and the grayscale version is **DFDFDF**.

A 20% lighter version of the original color is **FFFFFF**, and **C599A3** is the 20% darker color. If you saturate the color by 10%, you get **FEB7C6**, and if you desaturate by 10%, it is **FEE9EE**.

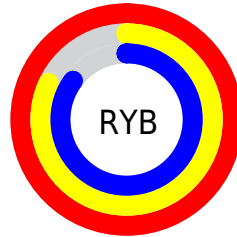
Distribution



Red (100%)

Green (82%)

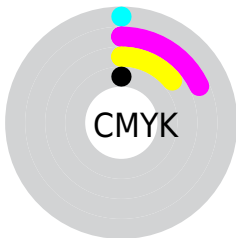
Blue (85%)



Red (100%)

Yellow (82%)

Blue (85%)

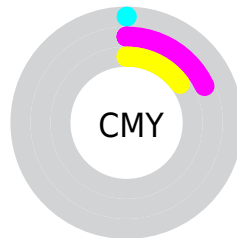


Cyan (0%)

Magenta (18%)

Yellow (14%)

Black (0%)



Cyan (0%)

Magenta (18%)

Yellow (15%)

Brightness & Saturation Gradients

These gradients show how the Hex color FED0DA changes by changing the brightness by 10 percent. The first figure shows a shift by +10% for each color and the second figure -10%.

Similar to the brightness gradients but the following saturation gradients show a change of the Hex color FED0DA by changing the saturation by 10% instead.

 FED0DA

FFFFFF

 FED0DA

 E1B4BE

 C599A3

 A97F89

 8E6670

 744E57

 5B3740

 43212A

 2C0C16

 110000

 FED0DA

 FED0DA

 FEB7C6

 FEE9EE

 FE9DB2

FEFFFF

 FE849E

 FE6A8A

 FE5177

 FE3863

 FE1E4F

 FE053B

 FE0037

Harmonies

Analogous

The Analogous color harmony consists of three colors that are next to each other on the color wheel.



F4D2EB



FED0DA



FFD1CA

Triad

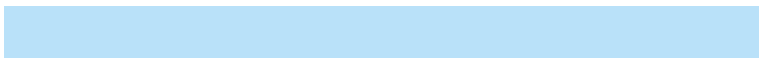
The Triadic color harmony groups three colors that are evenly spaced from another and form a triangle on the color wheel.



FED0DA



D4E0BF



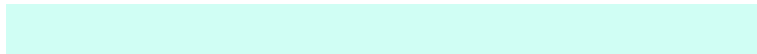
B9E1F9

Complementary

The Complementary color scheme is a pair of colors which are on the opposite of each other on the color wheel.



FED0DA



D0FEF4

Split Complementary

Split-complementary colors differ from the complementary color scheme. The scheme consists of three colors, the original color and two neighbors of the complement color.



B0E5EE



FED0DA



C1E4CC

Square

The Square scheme is like the rectangle color scheme, but the four colors are evenly spaced on the color wheel.



FED0DA



E7DBBA



B4E6DD



CCDCFD

Rectangle

The Rectangle color scheme consists of four colors that form a rectangle on the color wheel.



FED0DA



FAD4C1



B4E6DD



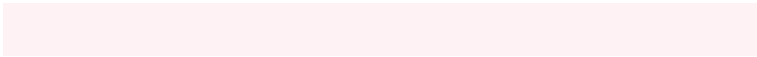
B5E3F6

Sweetspot

The Sweet Spot groups the original color and five complimentary colors.



FED0DA



FFF2F5



F3D0FE



80787A



000000



808080

Same Dimension

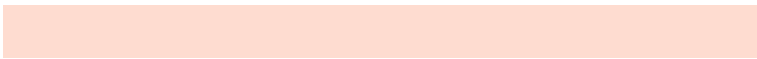
The Same Dimension uses a secret algorithm to generate beautiful new colors.



FED0DA



FFC7D3



FEDCD0



807376



BF002A



40000E

Inverse Universe

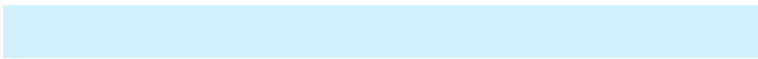
The Inverse Universe completely reimagines the original color for something new.



FED0DA



FFC7D3



D0F2FE



807376



BF002A



40000E

Previews

White Background



This preview shows how the Hex color FED0DA looks on a white background.

Color Contrast Check

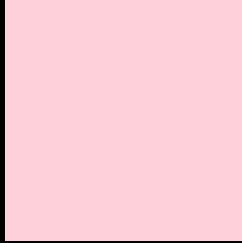
Large Text (above 18pt) WCAG AA × Fail

Any Text WCAG AA × Fail

Large Text (above 18pt) WCAG AAA × Fail

Any Text WCAG AAA × Fail

Black Background



This preview shows how the Hex color FED0DA looks on a black background.

Color Contrast Check

Large Text (above 18pt) WCAG AA ✓ Pass

Any Text WCAG AA ✓ Pass

Large Text (above 18pt) WCAG AAA ✓ Pass

Any Text WCAG AAA ✓ Pass

If you want to check with other color combinations, try the [Color Contrast Checker](#).

Hex FED0DA Background



This preview shows how black text looks on a background with the Hex color FED0DA.

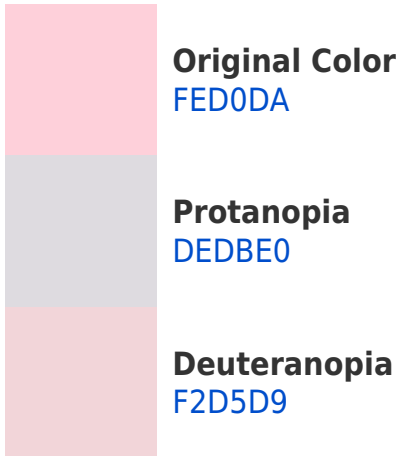


This preview shows how white text looks on a background with the Hex color FED0DA.

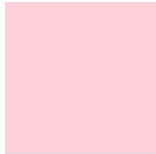
Color Blindness Simulation

Color vision deficiency is a very complex topic, and I could not describe the different causes any better than Wikipedia does, so if you want to learn more, you should check out their [article about color blindness](#).

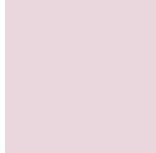
Dichromacy



Trichromacy



Original Color
FED0DA



Protanomaly
EAD7DE



Deuteranomaly
F6D3D9

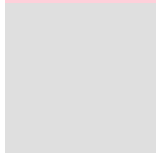


Tritanomaly
FFCFDD

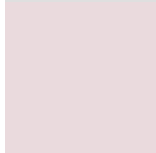
Monochromacy



Original Color
FED0DA



Achromatopsia
DFDFDF



Achromatomaly
EADADD

CSS Examples

Text

The CSS property to change the color of the text to Hex FED0DA is called "color". The color property can be set on classes, ids or directly on the HTML element.

This example shows how text in the color #FED0DA looks like.

```
.text, #text, p{  
  color:#FED0DA  
}
```

If you want to add a text shadow in that color use the text-shadow property, you can generate a text shadow directly with our [CSS Text Shadow Generator](#).

Here you see how black text with a 4 pixel #FED0DA colored shadow looks like.

```
.shadow{ text-shadow: 4px 4px 2px #FED0DA
}
```

Border

The CSS property to change the border of an element to Hex FED0DA is called "border". The border property can be set on classes, ids or directly on the HTML element.

This example shows the color as border, it can be applied via the CSS property "border" or "border-color".

```
.border, #border, table{ border:4px solid
#FED0DA }
```

If only the border color should be changed use the property `border-color`.

```
.border{ border-color:#FED0DA }
```

If you want to add a box shadow in that color use:

Here you see how a box with a 4 pixel #FED0DA colored shadow looks like.

```
.boxshadow{ -moz-box-shadow:4px 4px 4px  
4px #FED0DA; -webkit-box-shadow:4px 4px  
4px 4px #FED0DA; box-shadow:4px 4px 4px  
4px #FED0DA }
```

Background

The CSS property to change the background color of an element to Hex FED0DA is called "background". The background property can be set on classes, ids or directly on the HTML element.

```
.background, #background, body{  
background:#FED0DA }
```

If only the background color should be changed can be used:

```
.background{ background-color:#FED0DA }
```

This example shows the color as background, it is applied via the CSS property "background".

To optimize and compress your CSS code, you can use our [online CSS compressor and optimizer](#) based on csstidy. If you want to create a linear or radial gradient as background or border, check our [CSS Gradient Generator](#).

Hey! You found this booklet interesting? Support Converting Colors with the new Membership Option!

The pro membership hides all ads, plus gives you double the colors in the color bucket, and more awesome pro features!

[Learn more, Memberships starting at \\$2.50/m!](#)

**Follow me
on Twitter!**

@ConvertingColor