

Converting Colors

Hex(FF2D64)

Have a look what the booklet for
Hex(FF2D64) contains.

Hex(FF2D64)	3
<i>Conversions</i>	4
<i>Details</i>	6
<i>Harmonies</i>	11
<i>Previews</i>	23
<i>Color Blindness Simulation</i>	26
<i>CSS Examples</i>	29

Color

Hex(F F 2 D 6 4)

Conversions

Conversions Part 1

Format	Color
Hex	FF2D64
RGB	255, 45, 100
RGB Percent	100%, 18%, 39%
CMY	0.0000, 0.8235, 0.6078
CMYK	0.00, 0.82, 0.61, 0.00
HSL	344°, 100%, 59%
HSV	344°, 82%, 100%
XYZ	44.4786, 24.0569, 14.3557
YIQ	114.0600, 107.5050, 61.6250

Conversions

Conversions Part 2

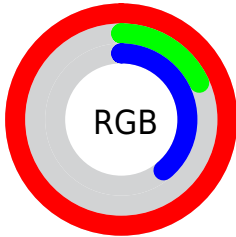
Format	Color
R_{YB}	255, 45, 100
Decimal	16723300
CIE _{Lab}	56.14, 77.22, 22.59
CIE _{LCh}	56, 80.456, 16.310
Yxy	24.0569, 0.5366, 0.2902
Android (android.graphics.Color)	4294913380 (0xFFFF2D64)
YUV	114.0600, -6.9316, 123.6044
Hunter-Lab	49.0478, 76.0377, 16.9799

Details

The Hex color **FF2D64** is a dark color, and the websafe version is hex **FF3366**. The color can be described as dark washed rose. A complement of this color would be **2DFFC8**, and the grayscale version is **727272**.

A 20% lighter version of the original color is **FF7296**, and **BF0036** is the 20% darker color. If you saturate the color by 10%, you get **FF1451**, and if you desaturate by 10%, it is **FF4777**.

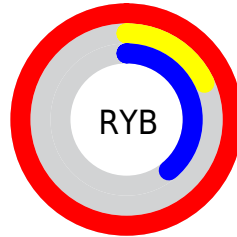
Distribution



Red (100%)

Green (18%)

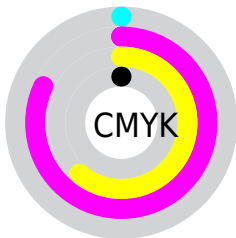
Blue (39%)



Red (100%)

Yellow (18%)

Blue (39%)

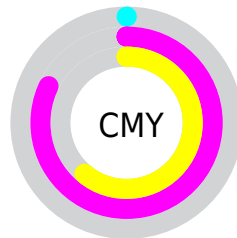


Cyan (0%)

Magenta (82%)

Yellow (61%)

Black (0%)



Cyan (0%)

Magenta (82%)

Yellow (61%)

Brightness & Saturation Gradients

These gradients show how the Hex color FF2D64 changes by changing the brightness by 10 percent. The first figure shows a shift by +10% for each color and the second figure -10%.

Similar to the brightness gradients but the following saturation gradients show a change of the Hex color FF2D64 by changing the saturation by 10% instead.

 FF2D64

 FF2D64

FFFFFF

 DF004C

 FF7296

 BF0036

 FF90B1

 9F0022

 FFAECC

 7F000C

 FFCCE9

 600003

 FFE8FF

 410003

 1F0001

 000000

 FF2D64

 FF2D64

 FF1451

 FF4777

 FF0043

 FF608A

 FF7A9C

 FF93AF

 FFADC2

 FFC6D5

 FFE0E8

 FFF9FB

FFFFFF

Harmonies

Analogous

The Analogous color harmony consists of three colors that are next to each other on the color wheel.



F134AA



FF2D64



EA551F

Triad

The Triadic color harmony groups three colors that are evenly spaced from another and form a triangle on the color wheel.



FF2D64



129C0F



0098FF

Complementary

The Complementary color scheme is a pair of colors which are on the opposite of each other on the color wheel.



FF2D64



2DFFC8

Split Complementary

Split-complementary colors differ from the complementary color scheme. The scheme consists of three colors, the original color and two neighbors of the complement color.



00A2EB



FF2D64



00A363

Square

The Square scheme is like the rectangle color scheme, but the four colors are evenly spaced on the color wheel.



FF2D64



7F8F00



00A5AC



0082FF

Rectangle

The Rectangle color scheme consists of four colors that form a rectangle on the color wheel.



FF2D64



CE6D00



00A5AC



009DFF

Sweetspot

The Sweet Spot groups the original color and five complimentary colors.



FF2D64



FFBFD0



C72DFF



805963



000000



808080

Same Dimension

The Same Dimension uses a secret algorithm to generate beautiful new colors.



FF2D64



FF0345



FF5E2D



807376



BF0032



400011

Inverse Universe

The Inverse Universe completely reimagines the original color for something new.



FF2D64



FF0345



2DCEFF



807376



BF0032



400011

Previews

White Background



This preview shows how the Hex color FF2D64 looks on a white background.

Color Contrast Check

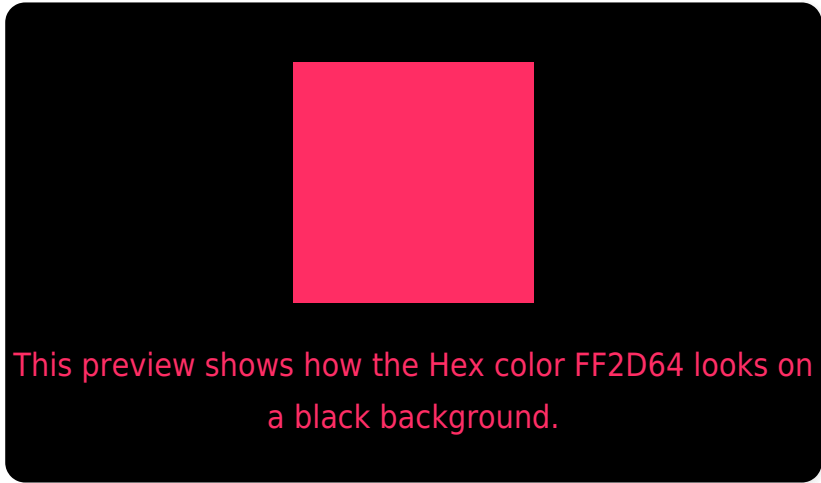
Large Text (above 18pt) WCAG AA ✓ Pass

Any Text WCAG AA × Fail

Large Text (above 18pt) WCAG AAA × Fail

Any Text WCAG AAA × Fail

Black Background



Color Contrast Check

Large Text (above 18pt) WCAG AA ✓ Pass

Any Text WCAG AA ✓ Pass

Large Text (above 18pt) WCAG AAA ✓ Pass

Any Text WCAG AAA × Fail

If you want to check with other color combinations, try the [Color Contrast Checker](#).

Hex FF2D64 Background



This preview shows how black text looks on a background with the Hex color FF2D64.



This preview shows how white text looks on a background with the Hex color FF2D64.

Color Blindness Simulation

Color vision deficiency is a very complex topic, and I could not describe the different causes any better than Wikipedia does, so if you want to learn more, you should check out their [article about color blindness](#).

Dichromacy



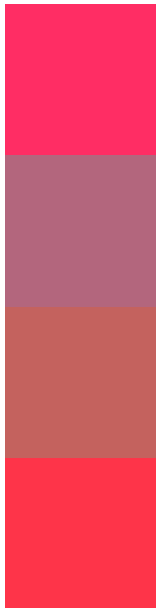
Original Color
FF2D64

Protanopia
88868B

Deuteranopia
A2815A



Trichromacy



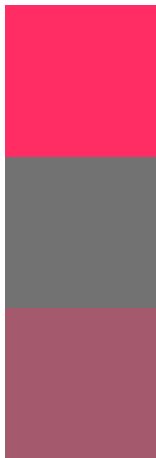
Original Color
FF2D64

Protanomaly
B3667D

Deuteranomaly
C4625E

Tritanomaly
FE3449

Monochromacy



Original Color
FF2D64

Achromatopsia
727272

Achromatomaly
A5596D

CSS Examples

Text

The CSS property to change the color of the text to Hex FF2D64 is called "color". The color property can be set on classes, ids or directly on the HTML element.

This example shows how text in the color #FF2D64 looks like.

```
.text, #text, p{  
    color:#FF2D64  
}
```

If you want to add a text shadow in that color use the text-shadow property, you can generate a text shadow directly with our [CSS Text Shadow Generator](#).

Here you see how black text with a 4 pixel #FF2D64 colored shadow looks like.

```
.shadow{ text-shadow: 4px 4px 2px #FF2D64
}
```

Border

The CSS property to change the border of an element to Hex FF2D64 is called "border". The border property can be set on classes, ids or directly on the HTML element.

This example shows the color as border, it can be applied via the CSS property "border" or "border-color".

```
.border, #border, table{ border:4px solid
#FF2D64 }
```

If only the border color should be changed use the property `border-color`.

```
.border{ border-color:#FF2D64 }
```

If you want to add a box shadow in that color use:

Here you see how a box with a 4 pixel #FF2D64 colored shadow looks like.

```
.boxshadow{ -moz-box-shadow:4px 4px 4px  
4px #FF2D64; -webkit-box-shadow:4px 4px  
4px 4px #FF2D64; box-shadow:4px 4px 4px  
4px #FF2D64 }
```

Background

The CSS property to change the background color of an element to Hex FF2D64 is called "background". The background property can be set on classes, ids or directly on the HTML element.

```
.background, #background, body{  
background:#FF2D64 }
```

If only the background color should be changed can be used:

```
.background{ background-color:#FF2D64 }
```

This example shows the color as background, it is applied via the CSS property "background".

To optimize and compress your CSS code, you can use our [online CSS compressor and optimizer](#) based on csstidy. If you want to create a linear or radial gradient as background or border, check our [CSS Gradient Generator](#).

Hey! You found this booklet interesting? Support Converting Colors with the new Membership Option!

The pro membership hides all ads, plus gives you double the colors in the color bucket, and more awesome pro features!

[Learn more, Memberships starting at \\$2.50/m!](#)

**Follow me
on Twitter!**

@ConvertingColor