

# Converting Colors

Hex(FF3B68)

Have a look what the booklet for  
Hex(FF3B68) contains.

<b>Hex(FF3B68)</b> .....	3
<b><i>Conversions</i></b> .....	4
<b><i>Details</i></b> .....	6
<b><i>Harmonies</i></b> .....	11
<b><i>Previews</i></b> .....	23
<b><i>Color Blindness Simulation</i></b> .....	26
<b><i>CSS Examples</i></b> .....	29

# Color

Hex(**FF3B68**)

# Conversions

## Conversions Part 1

Format	Color
Hex	FF3B68
RGB	255, 59, 104
RGB Percent	100%, 23%, 41%
CMY	0.0000, 0.7686, 0.5922
CMYK	0.00, 0.77, 0.59, 0.00
HSL	346°, 100%, 62%
HSV	346°, 77%, 100%
XYZ	45.3027, 25.3874, 15.6092
YIQ	122.7340, 102.3710, 55.5470

# Conversions

## Conversions Part 2

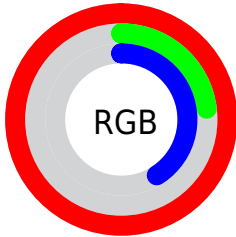
<b>Format</b>	<b>Color</b>
<a href="#">RYB</a>	<a href="#">255, 59, 104</a>
Decimal	<a href="#">16726888</a>
CIELab	<a href="#">57.45, 73.97, 21.97</a>
CIElCh	<a href="#">57, 77.163, 16.539</a>
Yxy	<a href="#">25.3874, 0.5249, 0.2942</a>
Android (android.graphics.Color)	<a href="#">4294916968 (0xFFFF3B68)</a>
YUV	<a href="#">122.7340, -9.2359, 115.9973</a>
Hunter-Lab	<a href="#">50.3859, 72.3164, 16.9025</a>

# Details

The Hex color **FF3B68** is a dark color, and the websafe version is hex **FF3366**. The color can be described as middle washed rose. A complement of this color would be **3BFFD2**, and the grayscale version is **7B7B7B**.

A 20% lighter version of the original color is **FF7B9B**, and **BF003A** is the 20% darker color. If you saturate the color by 10%, you get **FF2154**, and if you desaturate by 10%, it is **FF557C**.

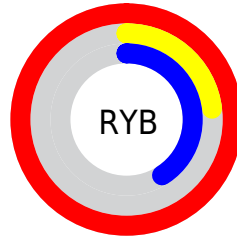
# Distribution



Red (100%)

Green (23%)

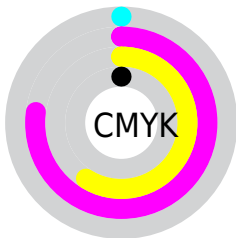
Blue (41%)



Red (100%)

Yellow (23%)

Blue (41%)

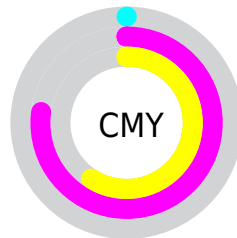


Cyan (0%)

Magenta (77%)

Yellow (59%)

Black (0%)



Cyan (0%)

Magenta (77%)

Yellow (59%)

# Brightness & Saturation Gradients

These gradients show how the Hex color FF3B68 changes by changing the brightness by 10 percent. The first figure shows a shift by +10% for each color and the second figure -10%.

Similar to the brightness gradients but the following saturation gradients show a change of the Hex color FF3B68 by changing the saturation by 10% instead.



 FF3B68

 FF3B68

FFFFFF

 DF0650

 FF7B9B

 BF003A

 FF99B6

 9F0025

 FFB6D1

 800011

 FFD4ED

 610002

 FFF2FF

 430003

 220001

 000000

 FF3B68

 FF3B68

 FF2154

 FF557C

 FF0841

 FF6E8F

 FF003B

 FF88A3

 FFA1B7

 FFBBCA

 FFD4DE

 FFEEF2

FFFFFF

# Harmonies

## Analogous

The Analogous color harmony consists of three colors that are next to each other on the color wheel.



F240AB



FF3B68



EB5C27

# Triad

The Triadic color harmony groups three colors that are evenly spaced from another and form a triangle on the color wheel.



FF3B68



259F1E



009BFF

# Complementary

The Complementary color scheme is a pair of colors which are on the opposite of each other on the color wheel.



FF3B68



3BFFD2

# Split Complementary

Split-complementary colors differ from the complementary color scheme. The scheme consists of three colors, the original color and two neighbors of the complement color.



00A5EB



FF3B68



00A668

# Square

The Square scheme is like the rectangle color scheme, but the four colors are evenly spaced on the color wheel.



FF3B68



849200



00A8AF



2585FF

# Rectangle

The Rectangle color scheme consists of four colors that form a rectangle on the color wheel.



FF3B68



D07200



00A8AF



009FFF



# Sweetspot

The Sweet Spot groups the original color and five complimentary colors.



FF3B68



FFC4D2



D13BFF



805C64



000000



808080



# Same Dimension

The Same Dimension uses a secret algorithm to generate beautiful new colors.



FF3B68



FF144A



FF6F3B



807376



BF002C



40000F



# Inverse Universe

The Inverse Universe completely reimagines the original color for something new.



FF3B68



FF144A



3BCBFF



807376



BF002C



40000F



# Previews

## White Background



This preview shows how the Hex color FF3B68 looks on a white background.

## Color Contrast Check

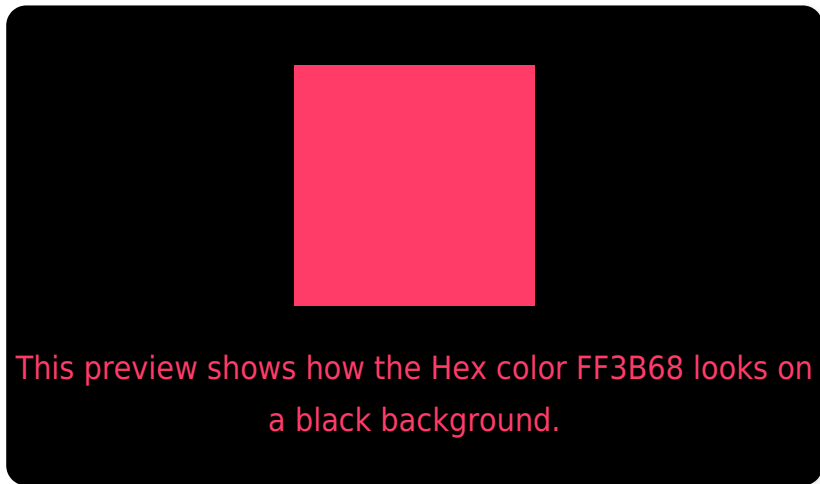
Large Text (above 18pt) WCAG AA ✓ Pass

Any Text WCAG AA × Fail

Large Text (above 18pt) WCAG AAA × Fail

Any Text WCAG AAA × Fail

# Black Background



## Color Contrast Check

Large Text (above 18pt) WCAG AA ✓ Pass

Any Text WCAG AA ✓ Pass

Large Text (above 18pt) WCAG AAA ✓ Pass

Any Text WCAG AAA × Fail

If you want to check with other color combinations, try the [Color Contrast Checker](#).



## Hex FF3B68 Background



This preview shows how black text looks on a background with the Hex color FF3B68.



This preview shows how white text looks on a background with the Hex color FF3B68.

# Color Blindness Simulation

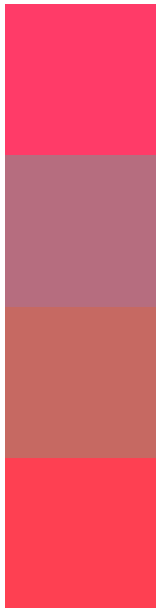
Color vision deficiency is a very complex topic, and I could not describe the different causes any better than Wikipedia does, so if you want to learn more, you should check out their [article about color blindness](#).

## Dichromacy





# Trichromacy



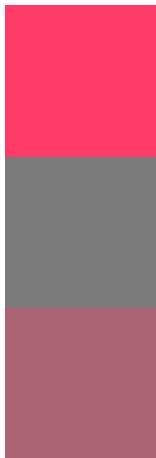
**Original Color**  
FF3B68

**Protanomaly**  
B66D7F

**Deuteranomaly**  
C66962

**Tritanomaly**  
FE4052

# Monochromacy



**Original Color**  
FF3B68

**Achromatopsia**  
7B7B7B

**Achromatomaly**  
AB6474

# CSS Examples

## Text

The CSS property to change the color of the text to Hex FF3B68 is called "color". The color property can be set on classes, ids or directly on the HTML element.

This example shows how text in the color #FF3B68 looks like.

```
.text, #text, p{  
    color:#FF3B68  
}
```

If you want to add a text shadow in that color use the text-shadow property, you can generate a text shadow directly with our [CSS Text Shadow Generator](#).

Here you see how black text with a 4 pixel #FF3B68 colored shadow looks like.

```
.shadow{ text-shadow: 4px 4px 2px #FF3B68
}
```

## Border

The CSS property to change the border of an element to Hex FF3B68 is called "border". The border property can be set on classes, ids or directly on the HTML element.

This example shows the color as border, it can be applied via the CSS property "border" or "border-color".

```
.border, #border, table{ border:4px solid
#FF3B68 }
```

If only the border color should be changed use the property `border-color`.

```
.border{ border-color:#FF3B68 }
```

If you want to add a box shadow in that color use:

Here you see how a box with a 4 pixel #FF3B68 colored shadow looks like.

```
.boxshadow{ -moz-box-shadow:4px 4px 4px  
4px #FF3B68; -webkit-box-shadow:4px 4px  
4px 4px #FF3B68; box-shadow:4px 4px 4px  
4px #FF3B68 }
```

# Background

The CSS property to change the background color of an element to Hex FF3B68 is called "background". The background property can be set on classes, ids or directly on the HTML element.

```
.background, #background, body{  
background:#FF3B68 }
```

If only the background color should be changed can be used:

```
.background{ background-color:#FF3B68 }
```

This example shows the color as background, it is applied via the CSS property "background".

To optimize and compress your CSS code, you can use our [online CSS compressor and optimizer](#) based on csstidy. If you want to create a linear or radial gradient as background or border, check our [CSS Gradient Generator](#).



Hey! You found this booklet interesting? Support Converting Colors with the new Membership Option!

The pro membership hides all ads, plus gives you double the colors in the color bucket, and more awesome pro features!

**[Learn more, Memberships starting at \\$2.50/m!](#)**

**Follow me  
on Twitter!**

**@ConvertingColor**