

# Converting Colors

Hex(FF4167)

Have a look what the booklet for  
Hex(FF4167) contains.

|  |    |
|--|----|
| <b>Hex(FF4167)</b> .....                       | 3  |
| <b><i>Conversions</i></b> .....                | 4  |
| <b><i>Details</i></b> .....                    | 6  |
| <b><i>Harmonies</i></b> .....                  | 11 |
| <b><i>Previews</i></b> .....                   | 23 |
| <b><i>Color Blindness Simulation</i></b> ..... | 26 |
| <b><i>CSS Examples</i></b> .....               | 29 |

**Color**

**Hex(F4167)**

# Conversions

## Conversions Part 1

| Format      | Color                       |
|-------------|-----------------------------|
| Hex         | FF4167                      |
| RGB         | 255, 65, 103                |
| RGB Percent | 100%, 25%, 40%              |
| CMY         | 0.0000, 0.7451, 0.5961      |
| CMYK        | 0.00, 0.75, 0.60, 0.00      |
| HSL         | 348°, 100%, 63%             |
| HSV         | 348°, 75%, 100%             |
| XYZ         | 45.5785, 26.0199, 15.4520   |
| YIQ         | 126.1420, 101.0420, 52.0980 |

# Conversions

## Conversions Part 2

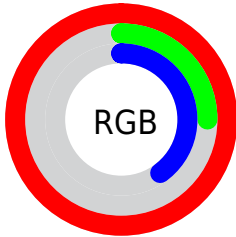
| <b>Format</b>                       | <b>Color</b>                    |
|-------------------------------------|---------------------------------|
| <b>R<sub>YB</sub></b>               | 255, 65, 103                    |
| Decimal                             | 16728423                        |
| CIE Lab                             | 58.06, 72.15, 23.36             |
| CIE LCh                             | 58, 75.842, 17.941              |
| Yxy                                 | 26.0199, 0.5236,<br>0.2989      |
| Android<br>(android.graphics.Color) | 4294918503<br>(0xFFFF4167)      |
| YUV                                 | 126.1420, -11.4090,<br>113.0085 |
| Hunter-Lab                          | 51.0097, 70.2275,<br>17.7464    |

# Details

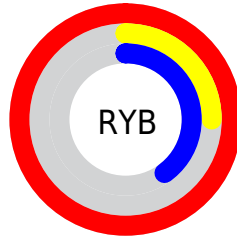
The Hex color **FF4167** is a dark color, and the websafe version is hex **FF3366**. The color can be described as middle washed rose. A complement of this color would be **41FFD9**, and the grayscale version is **7E7E7E**.

A 20% lighter version of the original color is **FF7F9A**, and **BF0039** is the 20% darker color. If you saturate the color by 10%, you get **FF2753**, and if you desaturate by 10%, it is **FF5A7B**.

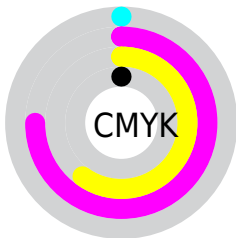
# Distribution



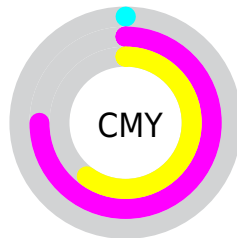
- Red (100%)
- Green (25%)
- Blue (40%)



- Red (100%)
- Yellow (25%)
- Blue (40%)



- Cyan (0%)
- Magenta (75%)
- Yellow (60%)
- Black (0%)



- Cyan (0%)
- Magenta (75%)
- Yellow (60%)

# Brightness & Saturation Gradients

These gradients show how the Hex color FF4167 changes by changing the brightness by 10 percent. The first figure shows a shift by +10% for each color and the second figure -10%.

Similar to the brightness gradients but the following saturation gradients show a change of the Hex color FF4167 by changing the saturation by 10% instead.



 FF4167

 FF4167

FFFFFF

 DF174F

 FF7F9A

 BF0039

 FF9DB4

 A00024

 FFBAD0

 800010

 FFD8EC

 610002

 FFF6FF

 440003

 220001

 000000

 FF4167

 FF4167

 FF2753

 FF5A7B

 FF0E3E

 FF7490

 FF0033

 FF8EA4

 FFA7B9

 FFC1CD

 FFDAE1

 FFF3F6

FFFFFF

# Harmonies

## Analogous

The Analogous color harmony consists of three colors that are next to each other on the color wheel.



F343A9



FF4167



EA6027

# Triad

The Triadic color harmony groups three colors that are evenly spaced from another and form a triangle on the color wheel.



FF4167



23A127



009BFF

# Complementary

The Complementary color scheme is a pair of colors which are on the opposite of each other on the color wheel.



FF4167



41FFD9

# Split Complementary

Split-complementary colors differ from the complementary color scheme. The scheme consists of three colors, the original color and two neighbors of the complement color.



00A6EE



FF4167



00A76D

# Square

The Square scheme is like the rectangle color scheme, but the four colors are evenly spaced on the color wheel.



FF4167



839400



00A9B3



3F86FF

# Rectangle

The Rectangle color scheme consists of four colors that form a rectangle on the color wheel.



FF4167



CF7500



00A9B3



00A0FF



# Sweetspot

The Sweet Spot groups the original color and five complimentary colors.



FF4167



FFC7D2



D941FF



805E65



000000



808080



# Same Dimension

The Same Dimension uses a secret algorithm to generate beautiful new colors.



FF4167



FF1C49



FF7A41



807375



BF0026



40000D



# Inverse Universe

The Inverse Universe completely reimagines the original color for something new.



FF4167



FF1C49



41C6FF



807375



BF0026



40000D



# Previews

## White Background



This preview shows how the Hex color FF4167 looks on a white background.

## Color Contrast Check

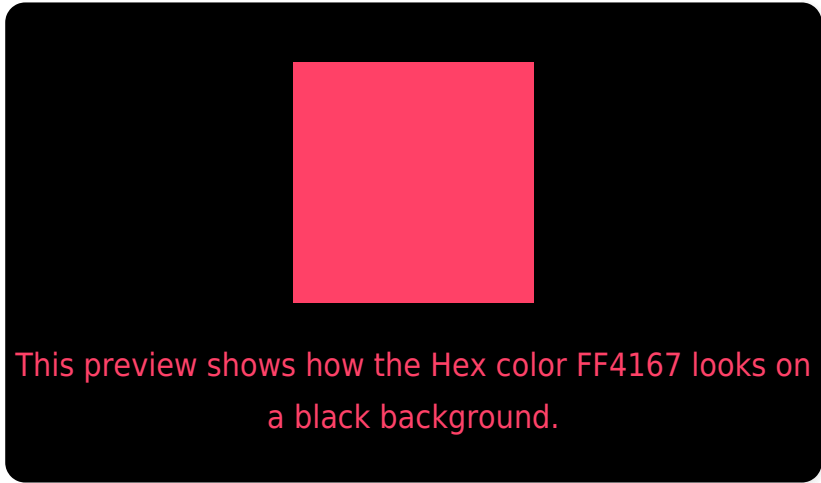
Large Text (above 18pt) WCAG AA ✓ Pass

Any Text WCAG AA × Fail

Large Text (above 18pt) WCAG AAA × Fail

Any Text WCAG AAA × Fail

# Black Background



## Color Contrast Check

Large Text (above 18pt) WCAG AA ✓ Pass

Any Text WCAG AA ✓ Pass

Large Text (above 18pt) WCAG AAA ✓ Pass

Any Text WCAG AAA × Fail

If you want to check with other color combinations, try the [Color Contrast Checker](#).



## Hex FF4167 Background



This preview shows how black text looks on a background with the Hex color FF4167.



This preview shows how white text looks on a background with the Hex color FF4167.

# Color Blindness Simulation

Color vision deficiency is a very complex topic, and I could not describe the different causes any better than Wikipedia does, so if you want to learn more, you should check out their [article about color blindness](#).

## Dichromacy



**Original Color**  
FF4167

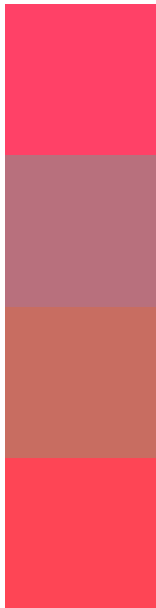
**Protanopia**  
8F8B89

**Deuteranopia**  
A8865E



**Tritanopia**  
FE474A

# Trichromacy



**Original Color**  
FF4167

**Protanomaly**  
B8707D

**Deuteranomaly**  
C86D61

**Tritanomaly**  
FE4555

# Monochromacy



**Original Color**  
FF4167

**Achromatopsia**  
7E7E7E

**Achromatomaly**  
AD6876

# CSS Examples

## Text

The CSS property to change the color of the text to Hex FF4167 is called "color". The color property can be set on classes, ids or directly on the HTML element.

This example shows how text in the color #FF4167 looks like.

```
.text, #text, p{  
    color:#FF4167  
}
```

If you want to add a text shadow in that color use the text-shadow property, you can generate a text shadow directly with our [CSS Text Shadow Generator](#).

Here you see how black text with a 4 pixel #FF4167 colored shadow looks like.

```
.shadow{ text-shadow: 4px 4px 2px #FF4167
}
```

## Border

The CSS property to change the border of an element to Hex FF4167 is called "border". The border property can be set on classes, ids or directly on the HTML element.

This example shows the color as border, it can be applied via the CSS property "border" or "border-color".

```
.border, #border, table{ border:4px solid
#FF4167 }
```

If only the border color should be changed use the property `border-color`.

```
.border{ border-color:#FF4167 }
```

If you want to add a box shadow in that color use:

Here you see how a box with a 4 pixel #FF4167 colored shadow looks like.

```
.boxshadow{ -moz-box-shadow:4px 4px 4px  
4px #FF4167; -webkit-box-shadow:4px 4px  
4px 4px #FF4167; box-shadow:4px 4px 4px  
4px #FF4167 }
```

# Background

The CSS property to change the background color of an element to Hex FF4167 is called "background". The background property can be set on classes, ids or directly on the HTML element.

```
.background, #background, body{  
background:#FF4167 }
```

If only the background color should be changed can be used:

```
.background{ background-color:#FF4167 }
```

This example shows the color as background, it is applied via the CSS property "background".

To optimize and compress your CSS code, you can use our [online CSS compressor and optimizer](#) based on csstidy. If you want to create a linear or radial gradient as background or border, check our [CSS Gradient Generator](#).



Hey! You found this booklet interesting? Support Converting Colors with the new Membership Option!

The pro membership hides all ads, plus gives you double the colors in the color bucket, and more awesome pro features!

**[Learn more, Memberships starting at \\$2.50/m!](#)**

**Follow me  
on Twitter!**

@ConvertingColor