

Converting Colors

Hex(FF4183)

Have a look what the booklet for
Hex(FF4183) contains.

Hex(FF4183)	3
<i>Conversions</i>	4
<i>Details</i>	6
<i>Harmonies</i>	11
<i>Previews</i>	23
<i>Color Blindness Simulation</i>	26
<i>CSS Examples</i>	29

Color

Hex(F4183)

Conversions

Conversions Part 1

Format	Color
Hex	FF4183
RGB	255, 65, 131
RGB Percent	100%, 25%, 51%
CMY	0.0000, 0.7451, 0.4863
CMYK	0.00, 0.75, 0.49, 0.00
HSL	339°, 100%, 63%
HSV	339°, 75%, 100%
XYZ	47.2270, 26.6793, 24.1332
YIQ	129.3340, 92.0540, 60.8060

Conversions

Conversions Part 2

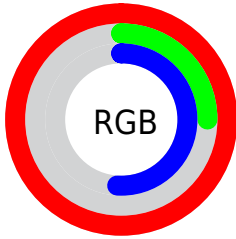
Format	Color
R_{YB}	255, 65, 131
Decimal	16728451
CIE _{Lab}	58.68, 74.14, 7.72
CIE _{LCh}	59, 74.543, 5.941
Yxy	26.6793, 0.4817, 0.2721
Android (android.graphics.Color)	4294918531 (0xFFFF4183)
YUV	129.3340, 0.8213, 110.2091
Hunter-Lab	51.6520, 72.8171, 8.4545

Details

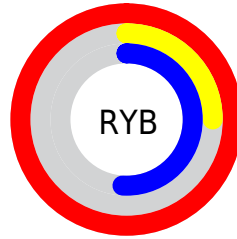
The Hex color **FF4183** is a light color, and the websafe version is hex **FF6699**. The color can be described as light washed rose. A complement of this color would be **41FFBD**, and the grayscale version is **818181**.

A 20% lighter version of the original color is **FF80B8**, and **C00052** is the 20% darker color. If you saturate the color by 10%, you get **FF2772**, and if you desaturate by 10%, it is **FF5A94**.

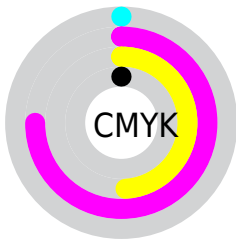
Distribution



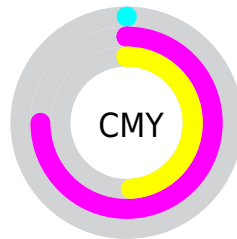
- Red (100%)
- Green (25%)
- Blue (51%)



- Red (100%)
- Yellow (25%)
- Blue (51%)



- Cyan (0%)
- Magenta (75%)
- Yellow (49%)
- Black (0%)



- Cyan (0%)
- Magenta (75%)
- Yellow (49%)

Brightness & Saturation Gradients

These gradients show how the Hex color FF4183 changes by changing the brightness by 10 percent. The first figure shows a shift by +10% for each color and the second figure -10%.

Similar to the brightness gradients but the following saturation gradients show a change of the Hex color FF4183 by changing the saturation by 10% instead.

 FF4183

 FF4183

FFFFFF

 DF156A

 FF80B8

 C00052

 FF9DD3

 A1003B

 FFBBF0

 820026

 FFD9FF

 640012

 FFF7FF

 480004

 270001

 000000

 FF4183

 FF4183

 FF2772

 FF5A94

 FF0E62

 FF74A4

 FF0059

 FF8EB5

 FFA7C6

 FFC1D6

 FFDAE7

 FFF3F7

FFFFFF

Harmonies

Analogous

The Analogous color harmony consists of three colors that are next to each other on the color wheel.



E453C4



FF4183



F65644

Triad

The Triadic color harmony groups three colors that are evenly spaced from another and form a triangle on the color wheel.



FF4183



589E02



00A2FF

Complementary

The Complementary color scheme is a pair of colors which are on the opposite of each other on the color wheel.



FF4183



41FFBD

Split Complementary

Split-complementary colors differ from the complementary color scheme. The scheme consists of three colors, the original color and two neighbors of the complement color.



00A9D9



FF4183



00A754

Square

The Square scheme is like the rectangle color scheme, but the four colors are evenly spaced on the color wheel.



FF4183



9E8F00



00AA99



0091FF

Rectangle

The Rectangle color scheme consists of four colors that form a rectangle on the color wheel.



FF4183



E16B18



00AA99



00A5F9

Sweetspot

The Sweet Spot groups the original color and five complimentary colors.



FF4183



FFC7DA



BD41FF



805E6A



000000



808080

Same Dimension

The Same Dimension uses a secret algorithm to generate beautiful new colors.



FF4183



FF1C6B



FF5E41



807377



BF0042



400016

Inverse Universe

The Inverse Universe completely reimagines the original color for something new.



FF4183



FF1C6B



41E2FF



807377



BF0042



400016

Previews

White Background



This preview shows how the Hex color FF4183 looks on a white background.

Color Contrast Check

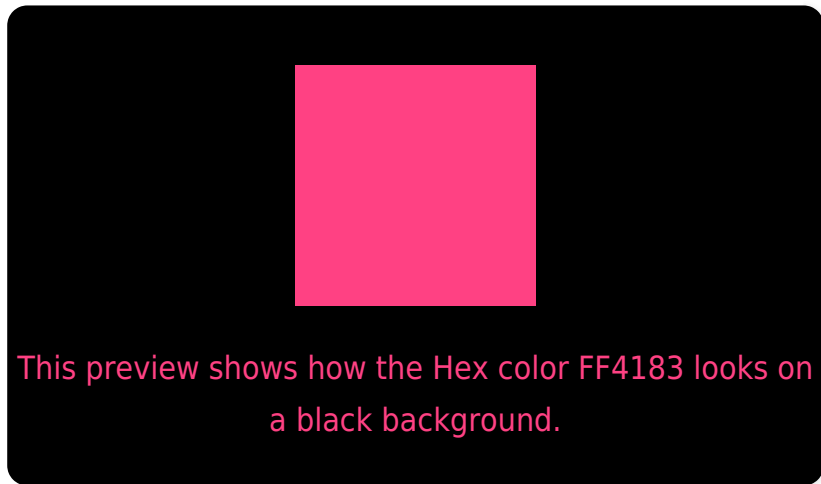
Large Text (above 18pt) WCAG AA ✓ Pass

Any Text WCAG AA × Fail

Large Text (above 18pt) WCAG AAA × Fail

Any Text WCAG AAA × Fail

Black Background



Color Contrast Check

Large Text (above 18pt) WCAG AA ✓ Pass

Any Text WCAG AA ✓ Pass

Large Text (above 18pt) WCAG AAA ✓ Pass

Any Text WCAG AAA × Fail

If you want to check with other color combinations, try the [Color Contrast Checker](#).

Hex FF4183 Background



This preview shows how black text looks on a background with the Hex color FF4183.

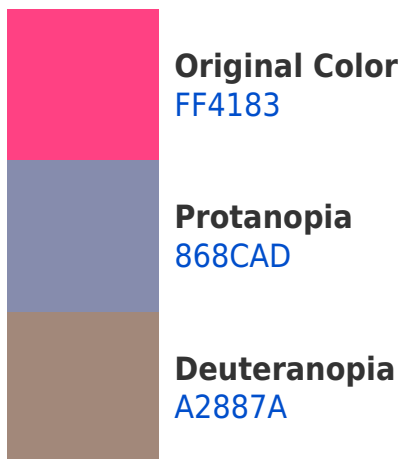


This preview shows how white text looks on a background with the Hex color FF4183.

Color Blindness Simulation

Color vision deficiency is a very complex topic, and I could not describe the different causes any better than Wikipedia does, so if you want to learn more, you should check out their [article about color blindness](#).

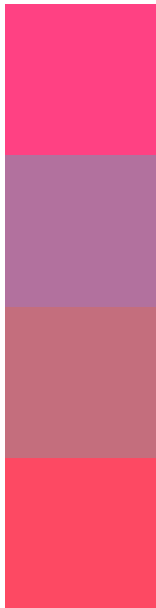
Dichromacy





Tritanopia
FC4D51

Trichromacy



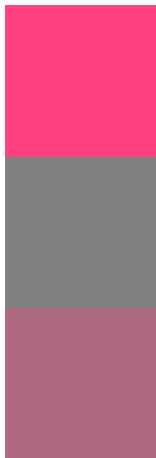
Original Color
FF4183

Protanomaly
B2719E

Deuteranomaly
C46E7D

Tritanomaly
FD4963

Monochromacy



Original Color
FF4183

Achromatopsia
818181

Achromatomaly
AF6A82

CSS Examples

Text

The CSS property to change the color of the text to Hex FF4183 is called "color". The color property can be set on classes, ids or directly on the HTML element.

This example shows how text in the color #FF4183 looks like.

```
.text, #text, p{  
    color:#FF4183  
}
```

If you want to add a text shadow in that color use the text-shadow property, you can generate a text shadow directly with our [CSS Text Shadow Generator](#).

Here you see how black text with a 4 pixel #FF4183 colored shadow looks like.

```
.shadow{ text-shadow: 4px 4px 2px #FF4183
}
```

Border

The CSS property to change the border of an element to Hex FF4183 is called "border". The border property can be set on classes, ids or directly on the HTML element.

This example shows the color as border, it can be applied via the CSS property "border" or "border-color".

```
.border, #border, table{ border:4px solid
#FF4183 }
```

If only the border color should be changed use the property `border-color`.

```
.border{ border-color:#FF4183 }
```

If you want to add a box shadow in that color use:

Here you see how a box with a 4 pixel #FF4183 colored shadow looks like.

```
.boxshadow{ -moz-box-shadow:4px 4px 4px  
4px #FF4183; -webkit-box-shadow:4px 4px  
4px 4px #FF4183; box-shadow:4px 4px 4px  
4px #FF4183 }
```

Background

The CSS property to change the background color of an element to Hex FF4183 is called "background". The background property can be set on classes, ids or directly on the HTML element.

```
.background, #background, body{  
background:#FF4183 }
```

If only the background color should be changed can be used:

```
.background{ background-color:#FF4183 }
```

This example shows the color as background, it is applied via the CSS property "background".

To optimize and compress your CSS code, you can use our [online CSS compressor and optimizer](#) based on csstidy. If you want to create a linear or radial gradient as background or border, check our [CSS Gradient Generator](#).

Hey! You found this booklet interesting? Support Converting Colors with the new Membership Option!

The pro membership hides all ads, plus gives you double the colors in the color bucket, and more awesome pro features!

[Learn more, Memberships starting at \\$2.50/m!](#)

**Follow me
on Twitter!**

@ConvertingColor