

Converting Colors

Hex(FF4371)

Have a look what the booklet for
Hex(FF4371) contains.

Hex(FF4371)	3
<i>Conversions</i>	4
<i>Details</i>	6
<i>Harmonies</i>	11
<i>Previews</i>	23
<i>Color Blindness Simulation</i>	26
<i>CSS Examples</i>	29

Color

Hex(F4371)

Conversions

Conversions Part 1

Format	Color
Hex	FF4371
RGB	255, 67, 113
RGB Percent	100%, 26%, 44%
CMY	0.0000, 0.7373, 0.5569
CMYK	0.00, 0.74, 0.56, 0.00
HSL	345°, 100%, 63%
HSV	345°, 74%, 100%
XYZ	46.2278, 26.4666, 18.2949
YIQ	128.4560, 97.2820, 54.1620

Conversions

Conversions Part 2

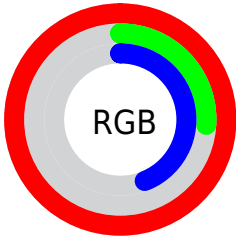
Format	Color
R_{YB}	255, 67, 113
Decimal	16728945
CIE _{Lab}	58.48, 72.19, 18.05
CIE _{LCh}	58, 74.409, 14.036
Yxy	26.4666, 0.5081, 0.2909
Android (android.graphics.Color)	4294919025 (0xFFFF4371)
YUV	128.4560, -7.6198, 110.9791
Hunter-Lab	51.4457, 70.3657, 14.9275

Details

The Hex color **FF4371** is a dark color, and the websafe version is hex **FF3366**. The color can be described as middle washed rose. A complement of this color would be **43FFD1**, and the grayscale version is **808080**.

A 20% lighter version of the original color is **FF81A4**, and **C00042** is the 20% darker color. If you saturate the color by 10%, you get **FF295E**, and if you desaturate by 10%, it is **FF5C84**.

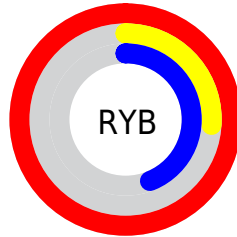
Distribution



Red (100%)

Green (26%)

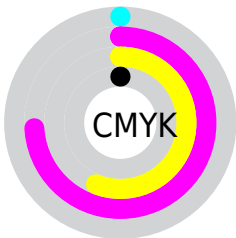
Blue (44%)



Red (100%)

Yellow (26%)

Blue (44%)

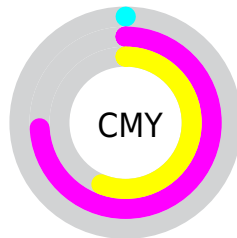


Cyan (0%)

Magenta (74%)

Yellow (56%)

Black (0%)



Cyan (0%)

Magenta (74%)

Yellow (56%)

Brightness & Saturation Gradients

These gradients show how the Hex color FF4371 changes by changing the brightness by 10 percent. The first figure shows a shift by +10% for each color and the second figure -10%.

Similar to the brightness gradients but the following saturation gradients show a change of the Hex color FF4371 by changing the saturation by 10% instead.

 FF4371

 FF4371

FFFFFF

 DF1A59

 FF81A4

 C00042

 FF9EBF

 A0002C

 FFBCDB

 810018

 FFDAF8

 630002

 FFF8FF

 450003

 240001

 000000

 FF4371

 FF4371

 FF295E

 FF5C84

 FF104A

 FF7698

 FF003E

 FF90AB

 FFA9BE

 FFC3D1

 FFDCE5

 FFF5F8

FFFFFF

Harmonies

Analogous

The Analogous color harmony consists of three colors that are next to each other on the color wheel.



EF4AB2



FF4371



EE5E33

Triad

The Triadic color harmony groups three colors that are evenly spaced from another and form a triangle on the color wheel.



FF4371



3CA120



009EFF

Complementary

The Complementary color scheme is a pair of colors which are on the opposite of each other on the color wheel.



FF4371



43FFD1

Split Complementary

Split-complementary colors differ from the complementary color scheme. The scheme consists of three colors, the original color and two neighbors of the complement color.



00A7E6



FF4371



00A866

Square

The Square scheme is like the rectangle color scheme, but the four colors are evenly spaced on the color wheel.



FF4371



8D9300



00AAAA



128AFF

Rectangle

The Rectangle color scheme consists of four colors that form a rectangle on the color wheel.



FF4371



D57300



00AAAA



00A2FF

Sweetspot

The Sweet Spot groups the original color and five complimentary colors.



FF4371



FFC7D5



D043FF



805E66



000000



808080

Same Dimension

The Same Dimension uses a secret algorithm to generate beautiful new colors.



FF4371



FF1F56



FF7243



807376



BF002F



400010

Inverse Universe

The Inverse Universe completely reimagines the original color for something new.



FF4371



FF1F56



43D0FF



807376



BF002F



400010

Previews

White Background



This preview shows how the Hex color FF4371 looks on a white background.

Color Contrast Check

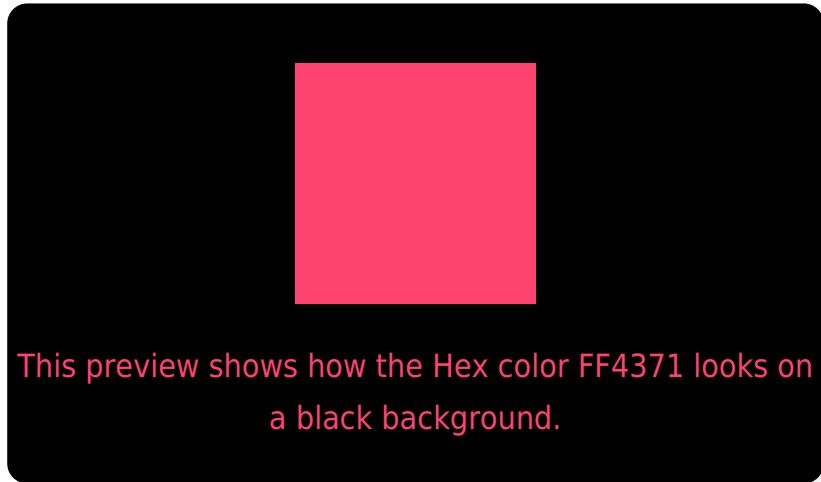
Large Text (above 18pt) WCAG AA ✓ Pass

Any Text WCAG AA × Fail

Large Text (above 18pt) WCAG AAA × Fail

Any Text WCAG AAA × Fail

Black Background



Color Contrast Check

Large Text (above 18pt) WCAG AA ✓ Pass

Any Text WCAG AA ✓ Pass

Large Text (above 18pt) WCAG AAA ✓ Pass

Any Text WCAG AAA × Fail

If you want to check with other color combinations, try the [Color Contrast Checker](#).

Hex FF4371 Background



This preview shows how black text looks on a background with the Hex color FF4371.



This preview shows how white text looks on a background with the Hex color FF4371.

Color Blindness Simulation

Color vision deficiency is a very complex topic, and I could not describe the different causes any better than Wikipedia does, so if you want to learn more, you should check out their [article about color blindness](#).

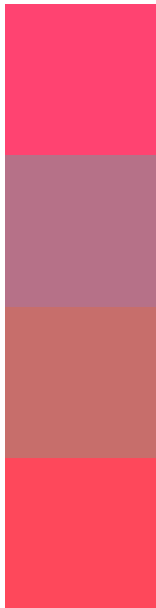
Dichromacy





Tritanopia
FD4B4E

Trichromacy



Original Color
FF4371

Protanomaly
B67188

Deuteranomaly
C76E6B

Tritanomaly
FE485B

Monochromacy



Original Color
FF4371

Achromatopsia
808080

Achromatomaly
AE6A7B

CSS Examples

Text

The CSS property to change the color of the text to Hex FF4371 is called "color". The color property can be set on classes, ids or directly on the HTML element.

This example shows how text in the color #FF4371 looks like.

```
.text, #text, p{  
    color:#FF4371  
}
```

If you want to add a text shadow in that color use the text-shadow property, you can generate a text shadow directly with our [CSS Text Shadow Generator](#).

Here you see how black text with a 4 pixel #FF4371 colored shadow looks like.

```
.shadow{ text-shadow: 4px 4px 2px #FF4371
}
```

Border

The CSS property to change the border of an element to Hex FF4371 is called "border". The border property can be set on classes, ids or directly on the HTML element.

This example shows the color as border, it can be applied via the CSS property "border" or "border-color".

```
.border, #border, table{ border:4px solid
#FF4371 }
```

If only the border color should be changed use the property `border-color`.

```
.border{ border-color:#FF4371 }
```

If you want to add a box shadow in that color use:

Here you see how a box with a 4 pixel #FF4371 colored shadow looks like.

```
.boxshadow{ -moz-box-shadow:4px 4px 4px  
4px #FF4371; -webkit-box-shadow:4px 4px  
4px 4px #FF4371; box-shadow:4px 4px 4px  
4px #FF4371 }
```

Background

The CSS property to change the background color of an element to Hex FF4371 is called "background". The background property can be set on classes, ids or directly on the HTML element.

```
.background, #background, body{  
background:#FF4371 }
```

If only the background color should be changed can be used:

```
.background{ background-color:#FF4371 }
```

This example shows the color as background, it is applied via the CSS property "background".

To optimize and compress your CSS code, you can use our [online CSS compressor and optimizer](#) based on csstidy. If you want to create a linear or radial gradient as background or border, check our [CSS Gradient Generator](#).

Hey! You found this booklet interesting? Support Converting Colors with the new Membership Option!

The pro membership hides all ads, plus gives you double the colors in the color bucket, and more awesome pro features!

[Learn more, Memberships starting at \\$2.50/m!](#)

**Follow me
on Twitter!**

@ConvertingColor