

Converting Colors

Hex(FF4377)

Have a look what the booklet for
Hex(FF4377) contains.

Hex(FF4377)	3
<i>Conversions</i>	4
<i>Details</i>	6
<i>Harmonies</i>	11
<i>Previews</i>	23
<i>Color Blindness Simulation</i>	26
<i>CSS Examples</i>	29

Color

Hex(F4377)

Conversions

Conversions Part 1

Format	Color
Hex	FF4377
RGB	255, 67, 119
RGB Percent	100%, 26%, 47%
CMY	0.0000, 0.7373, 0.5333
CMYK	0.00, 0.74, 0.53, 0.00
HSL	343°, 100%, 63%
HSV	343°, 74%, 100%
XYZ	46.5769, 26.6062, 20.1334
YIQ	129.1400, 95.3560, 56.0280

Conversions

Conversions Part 2

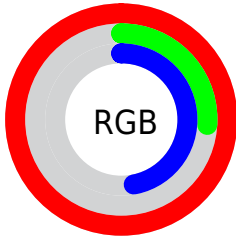
Format	Color
R_{YB}	255, 67, 119
Decimal	16728951
CIE _{Lab}	58.61, 72.61, 14.69
CIE _{LCh}	59, 74.083, 11.439
Yxy	26.6062, 0.4991, 0.2851
Android (android.graphics.Color)	4294919031 (0xFFFF4377)
YUV	129.1400, -4.9990, 110.3792
Hunter-Lab	51.5812, 70.9152, 12.9645

Details

The Hex color **FF4377** is a dark color, and the websafe version is hex **FF3366**. The color can be described as middle washed rose. A complement of this color would be **43FFCB**, and the grayscale version is **818181**.

A 20% lighter version of the original color is **FF81AB**, and **C00047** is the 20% darker color. If you saturate the color by 10%, you get **FF2965**, and if you desaturate by 10%, it is **FF5C89**.

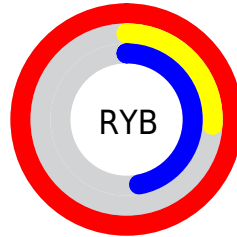
Distribution



Red (100%)

Green (26%)

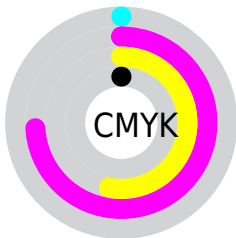
Blue (47%)



Red (100%)

Yellow (26%)

Blue (47%)

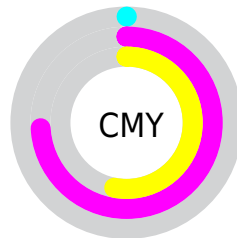


Cyan (0%)

Magenta (74%)

Yellow (53%)

Black (0%)



Cyan (0%)

Magenta (74%)

Yellow (53%)

Brightness & Saturation Gradients

These gradients show how the Hex color FF4377 changes by changing the brightness by 10 percent. The first figure shows a shift by +10% for each color and the second figure -10%.

Similar to the brightness gradients but the following saturation gradients show a change of the Hex color FF4377 by changing the saturation by 10% instead.

 FF4377

 FF4377

FFFFFF

 DF1A5E

 FF81AB

 C00047

 FF9FC6

 A10031

 FFBCE2

 82001D

 FFDAFF

 630002

 FFF8FF

 460003

 250001

 000000

 FF4377

 FF4377

■ FF2965

■ FF5C89

■ FF1052

■ FF769C

■ FF0047

■ FF90AE

■ FFA9C1

■ FFC3D3

■ FFDCE6

■ FFF5F8

FFFFFF

Harmonies

Analogous

The Analogous color harmony consists of three colors that are next to each other on the color wheel.



EB4EB8



FF4377



F15C39

Triad

The Triadic color harmony groups three colors that are evenly spaced from another and form a triangle on the color wheel.



FF4377



47A01A



009FFF

Complementary

The Complementary color scheme is a pair of colors which are on the opposite of each other on the color wheel.



FF4377



43FFCB

Split Complementary

Split-complementary colors differ from the complementary color scheme. The scheme consists of three colors, the original color and two neighbors of the complement color.



00A8E2



FF4377



00A761

Square

The Square scheme is like the rectangle color scheme, but the four colors are evenly spaced on the color wheel.



FF4377



939200



00AAA5



008DFF

Rectangle

The Rectangle color scheme consists of four colors that form a rectangle on the color wheel.



FF4377



D97106



00AAA5



00A3FF

Sweetspot

The Sweet Spot groups the original color and five complimentary colors.



FF4377



FFC7D6



CA43FF



805E68



000000



808080

Same Dimension

The Same Dimension uses a secret algorithm to generate beautiful new colors.



FF4377



FF1F5D



FF6C43



807376



BF0035



400012

Inverse Universe

The Inverse Universe completely reimagines the original color for something new.



FF4377



FF1F5D



43D6FF



807376



BF0035



400012

Previews

White Background



This preview shows how the Hex color FF4377 looks on a white background.

Color Contrast Check

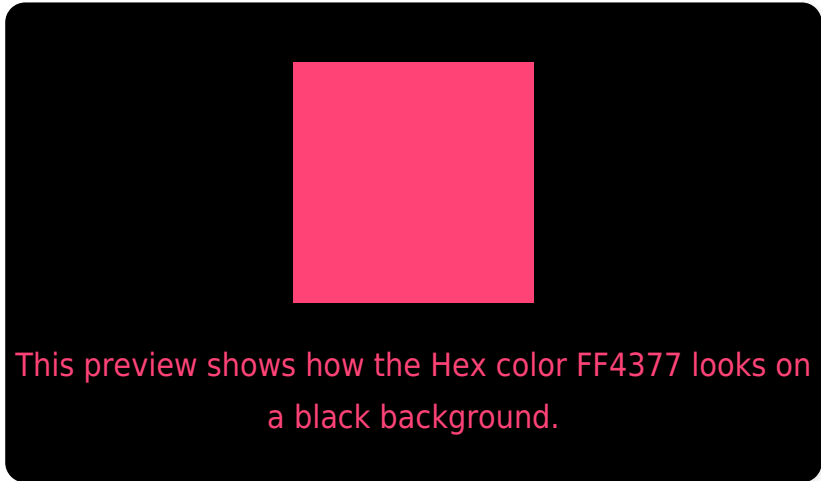
Large Text (above 18pt) WCAG AA ✓ Pass

Any Text WCAG AA × Fail

Large Text (above 18pt) WCAG AAA × Fail

Any Text WCAG AAA × Fail

Black Background



Color Contrast Check

Large Text (above 18pt) WCAG AA ✓ Pass

Any Text WCAG AA ✓ Pass

Large Text (above 18pt) WCAG AAA ✓ Pass

Any Text WCAG AAA × Fail

If you want to check with other color combinations, try the [Color Contrast Checker](#).

Hex FF4377 Background



This preview shows how black text looks on a background with the Hex color FF4377.



This preview shows how white text looks on a background with the Hex color FF4377.

Color Blindness Simulation

Color vision deficiency is a very complex topic, and I could not describe the different causes any better than Wikipedia does, so if you want to learn more, you should check out their [article about color blindness](#).

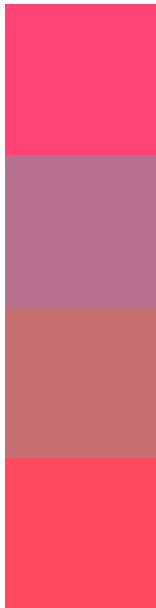
Dichromacy





Tritanopia
FD4C4F

Trichromacy



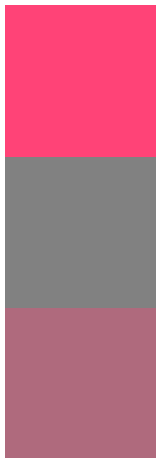
Original Color
FF4377

Protanomaly
B5718F

Deuteranomaly
C66F71

Tritanomaly
FE495E

Monochromacy



Original Color
FF4377

Achromatopsia
818181

Achromatomaly
AF6A7D

CSS Examples

Text

The CSS property to change the color of the text to Hex FF4377 is called "color". The color property can be set on classes, ids or directly on the HTML element.

This example shows how text in the color #FF4377 looks like.

```
.text, #text, p{  
    color:#FF4377  
}
```

If you want to add a text shadow in that color use the text-shadow property, you can generate a text shadow directly with our [CSS Text Shadow Generator](#).

Here you see how black text with a 4 pixel #FF4377 colored shadow looks like.

```
.shadow{ text-shadow: 4px 4px 2px #FF4377
}
```

Border

The CSS property to change the border of an element to Hex FF4377 is called "border". The border property can be set on classes, ids or directly on the HTML element.

This example shows the color as border, it can be applied via the CSS property "border" or "border-color".

```
.border, #border, table{ border:4px solid
#FF4377 }
```

If only the border color should be changed use the property border-color.

```
.border{ border-color:#FF4377 }
```

If you want to add a box shadow in that color use:

Here you see how a box with a 4 pixel #FF4377 colored shadow looks like.

```
.boxshadow{ -moz-box-shadow:4px 4px 4px  
4px #FF4377; -webkit-box-shadow:4px 4px  
4px 4px #FF4377; box-shadow:4px 4px 4px  
4px #FF4377 }
```

Background

The CSS property to change the background color of an element to Hex FF4377 is called "background". The background property can be set on classes, ids or directly on the HTML element.

```
.background, #background, body{  
background:#FF4377 }
```

If only the background color should be changed can be used:

```
.background{ background-color:#FF4377 }
```

This example shows the color as background, it is applied via the CSS property "background".

To optimize and compress your CSS code, you can use our [online CSS compressor and optimizer](#) based on csstidy. If you want to create a linear or radial gradient as background or border, check our [CSS Gradient Generator](#).

Hey! You found this booklet interesting? Support Converting Colors with the new Membership Option!

The pro membership hides all ads, plus gives you double the colors in the color bucket, and more awesome pro features!

[Learn more, Memberships starting at \\$2.50/m!](#)

**Follow me
on Twitter!**

@ConvertingColor