

# Converting Colors

Hex(FF4480)

Have a look what the booklet for  
Hex(FF4480) contains.

<b>Hex(FF4480)</b> .....	3
<b><i>Conversions</i></b> .....	4
<b><i>Details</i></b> .....	6
<b><i>Harmonies</i></b> .....	11
<b><i>Previews</i></b> .....	23
<b><i>Color Blindness Simulation</i></b> .....	26
<b><i>CSS Examples</i></b> .....	29

# **Color**

**Hex(F4480)**

# Conversions

## Conversions Part 1

Format	Color
Hex	FF4480
RGB	255, 68, 128
RGB Percent	100%, 27%, 50%
CMY	0.0000, 0.7333, 0.4980
CMYK	0.00, 0.73, 0.50, 0.00
HSL	341°, 100%, 63%
HSV	341°, 73%, 100%
XYZ	47.2034, 26.9528, 23.1366
YIQ	130.7530, 92.1920, 58.3040

# Conversions

## Conversions Part 2

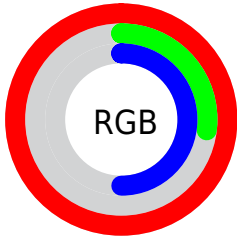
<b>Format</b>	<b>Color</b>
R <sub>Y</sub> B	255, 68, 128
Decimal	16729216
CIE Lab	58.93, 72.98, 9.84
CIE LCh	59, 73.642, 7.682
Yxy	26.9528, 0.4852, 0.2770
Android (android.graphics.Color)	4294919296 (0xFFFF4480)
YUV	130.7530, -1.3572, 108.9646
Hunter-Lab	51.9160, 71.4437, 9.9184

# Details

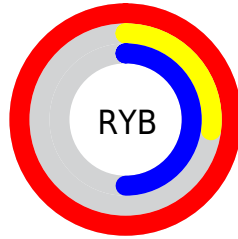
The Hex color **FF4480** is a light color, and the websafe version is hex **FF3366**. The color can be described as light washed rose. A complement of this color would be **44FFC3**, and the grayscale version is **838383**.

A 20% lighter version of the original color is **FF82B5**, and **C0004F** is the 20% darker color. If you saturate the color by 10%, you get **FF2A6F**, and if you desaturate by 10%, it is **FF5D91**.

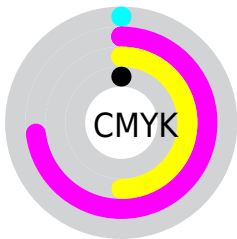
# Distribution



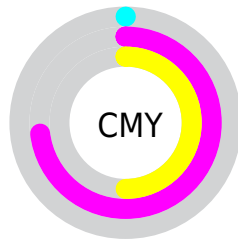
- Red (100%)
- Green (27%)
- Blue (50%)



- Red (100%)
- Yellow (27%)
- Blue (50%)



- Cyan (0%)
- Magenta (73%)
- Yellow (50%)
- Black (0%)



- Cyan (0%)
- Magenta (73%)
- Yellow (50%)

# Brightness & Saturation Gradients

These gradients show how the Hex color FF4480 changes by changing the brightness by 10 percent. The first figure shows a shift by +10% for each color and the second figure -10%.

Similar to the brightness gradients but the following saturation gradients show a change of the Hex color FF4480 by changing the saturation by 10% instead.



 FF4480

 FF4480

FFFFFF

 DF1C67

 FF82B5

 C0004F

 FF9FD0

 A10039

 FFBDEC

 820024

 FFDBFF

 64000E

 FFF9FF

 470004

 270001

 000000

 FF4480

 FF4480

 FF2A6F

 FF5D91

 FF115D

 FF77A3

 FF0052

 FF91B4

 FFAAC5

 FFC3D7

 FFDDE8

 FFF6F9

FFFFFF

# Harmonies

## Analogous

The Analogous color harmony consists of three colors that are next to each other on the color wheel.



E753C0



FF4480



F55942

# Triad

The Triadic color harmony groups three colors that are evenly spaced from another and form a triangle on the color wheel.



FF4480



55A011



00A2FF

# Complementary

The Complementary color scheme is a pair of colors which are on the opposite of each other on the color wheel.



FF4480



44FFC3

# Split Complementary

Split-complementary colors differ from the complementary color scheme. The scheme consists of three colors, the original color and two neighbors of the complement color.



00A9DC



FF4480



00A85A

# Square

The Square scheme is like the rectangle color scheme, but the four colors are evenly spaced on the color wheel.



FF4480



9C9000



00AB9D



0090FF

# Rectangle

The Rectangle color scheme consists of four colors that form a rectangle on the color wheel.



FF4480



DF6E17



00AB9D



00A5FB



# Sweetspot

The Sweet Spot groups the original color and five complimentary colors.



FF4480



FFC7D9



C144FF



805E69



000000



808080



# Same Dimension

The Same Dimension uses a secret algorithm to generate beautiful new colors.



FF4480



FF1F67



FF6344



807377



BF003D



400014



# Inverse Universe

The Inverse Universe completely reimagines the original color for something new.



FF4480



FF1F67



44E0FF



807377



BF003D



400014



# Previews

## White Background



This preview shows how the Hex color FF4480 looks on a white background.

## Color Contrast Check

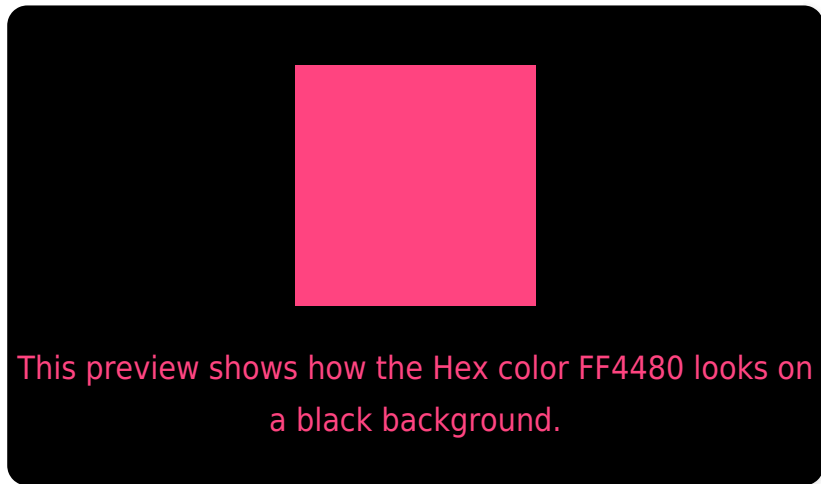
Large Text (above 18pt) WCAG AA ✓ Pass

Any Text WCAG AA × Fail

Large Text (above 18pt) WCAG AAA × Fail

Any Text WCAG AAA × Fail

# Black Background



## Color Contrast Check

Large Text (above 18pt) WCAG AA ✓ Pass

Any Text WCAG AA ✓ Pass

Large Text (above 18pt) WCAG AAA ✓ Pass

Any Text WCAG AAA × Fail

If you want to check with other color combinations, try the [Color Contrast Checker](#).



## Hex FF4480 Background



This preview shows how black text looks on a background with the Hex color FF4480.

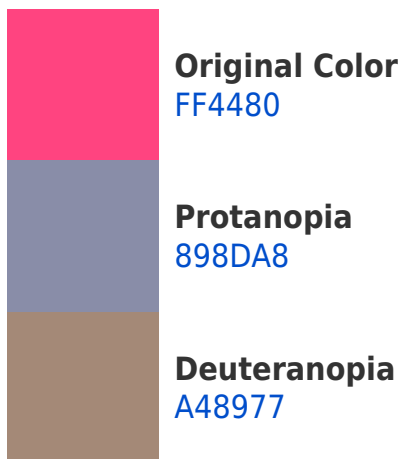


This preview shows how white text looks on a background with the Hex color FF4480.

# Color Blindness Simulation

Color vision deficiency is a very complex topic, and I could not describe the different causes any better than Wikipedia does, so if you want to learn more, you should check out their [article about color blindness](#).

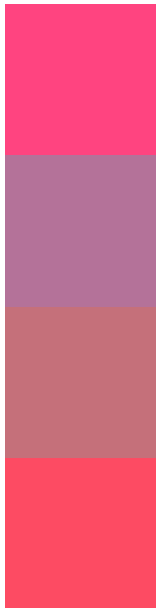
## Dichromacy





**Tritanopia**  
FC4F53

# Trichromacy



**Original Color**  
FF4480

**Protanomaly**  
B47299

**Deuteranomaly**  
C5707A

**Tritanomaly**  
FD4B63

# Monochromacy



**Original Color**  
FF4480

**Achromatopsia**  
838383

**Achromatomaly**  
B06C82

# CSS Examples

## Text

The CSS property to change the color of the text to Hex FF4480 is called "color". The color property can be set on classes, ids or directly on the HTML element.

This example shows how text in the color #FF4480 looks like.

```
.text, #text, p{  
    color:#FF4480  
}
```

If you want to add a text shadow in that color use the text-shadow property, you can generate a text shadow directly with our [CSS Text Shadow Generator](#).

Here you see how black text with a 4 pixel #FF4480 colored shadow looks like.

```
.shadow{ text-shadow: 4px 4px 2px #FF4480
}
```

## Border

The CSS property to change the border of an element to Hex FF4480 is called "border". The border property can be set on classes, ids or directly on the HTML element.

This example shows the color as border, it can be applied via the CSS property "border" or "border-color".

```
.border, #border, table{ border:4px solid
#FF4480 }
```

If only the border color should be changed use the property `border-color`.

```
.border{ border-color:#FF4480 }
```

If you want to add a box shadow in that color use:

Here you see how a box with a 4 pixel #FF4480 colored shadow looks like.

```
.boxshadow{ -moz-box-shadow:4px 4px 4px  
4px #FF4480; -webkit-box-shadow:4px 4px  
4px 4px #FF4480; box-shadow:4px 4px 4px  
4px #FF4480 }
```

# Background

The CSS property to change the background color of an element to Hex FF4480 is called "background". The background property can be set on classes, ids or directly on the HTML element.

```
.background, #background, body{  
background:#FF4480 }
```

If only the background color should be changed can be used:

```
.background{ background-color:#FF4480 }
```

This example shows the color as background, it is applied via the CSS property "background".

To optimize and compress your CSS code, you can use our [online CSS compressor and optimizer](#) based on csstidy. If you want to create a linear or radial gradient as background or border, check our [CSS Gradient Generator](#).



Hey! You found this booklet interesting? Support Converting Colors with the new Membership Option!

The pro membership hides all ads, plus gives you double the colors in the color bucket, and more awesome pro features!

**[Learn more, Memberships starting at \\$2.50/m!](#)**

**Follow me  
on Twitter!**

@ConvertingColor