

Converting Colors

Hex(FF4676)

Have a look what the booklet for
Hex(FF4676) contains.

Hex(FF4676)	3
<i>Conversions</i>	4
<i>Details</i>	6
<i>Harmonies</i>	11
<i>Previews</i>	23
<i>Color Blindness Simulation</i>	26
<i>CSS Examples</i>	29

Color

Hex(F4676)

Conversions

Conversions Part 1

Format	Color
Hex	FF4676
RGB	255, 70, 118
RGB Percent	100%, 27%, 46%
CMY	0.0000, 0.7255, 0.5373
CMYK	0.00, 0.73, 0.54, 0.00
HSL	344°, 100%, 64%
HSV	344°, 73%, 100%
XYZ	46.7002, 26.9483, 19.8797
YIQ	130.7870, 94.8520, 54.1480

Conversions

Conversions Part 2

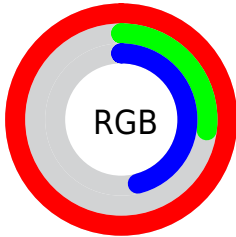
Format	Color
R_{YB}	255, 70, 118
Decimal	16729718
CIE _{Lab}	58.93, 71.59, 15.72
CIE _{LCh}	59, 73.292, 12.387
Yxy	26.9483, 0.4993, 0.2881
Android (android.graphics.Color)	4294919798 (0xFFFF4676)
YUV	130.7870, -6.3040, 108.9348
Hunter-Lab	51.9118, 69.7342, 13.6330

Details

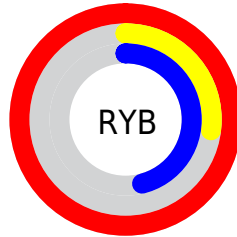
The Hex color **FF4676** is a dark color, and the websafe version is hex **FF3366**. The color can be described as middle washed rose. A complement of this color would be **46FFCF**, and the grayscale version is **838383**.

A 20% lighter version of the original color is **FF83AA**, and **C00046** is the 20% darker color. If you saturate the color by 10%, you get **FF2D63**, and if you desaturate by 10%, it is **FF6089**.

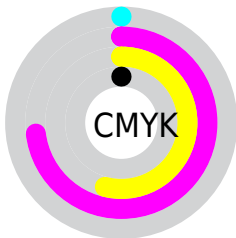
Distribution



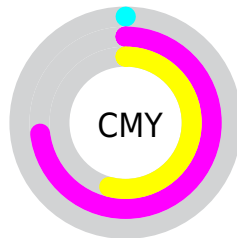
- Red (100%)
- Green (27%)
- Blue (46%)



- Red (100%)
- Yellow (27%)
- Blue (46%)



- Cyan (0%)
- Magenta (73%)
- Yellow (54%)
- Black (0%)



- Cyan (0%)
- Magenta (73%)
- Yellow (54%)

Brightness & Saturation Gradients

These gradients show how the Hex color FF4676 changes by changing the brightness by 10 percent. The first figure shows a shift by +10% for each color and the second figure -10%.

Similar to the brightness gradients but the following saturation gradients show a change of the Hex color FF4676 by changing the saturation by 10% instead.

 FF4676

 FF4676

FFFFFF

 DF205E

 FF83AA

 C00046

 FFA1C5

 A10030

 FFBEE1

 82001C

 FFDCFD

 640001

 FFFAFF

 460004

 250001

 000000

 FF4676

 FF4676

■ FF2D63

■ FF6089

■ FF1350

■ FF799C

■ FF0042

■ FF93AF

■ FFACC2

■ FFC6D4

■ FFDFE7

■ FFF9FA

FFFFFF

Harmonies

Analogous

The Analogous color harmony consists of three colors that are next to each other on the color wheel.



ED4FB6



FF4676



F05F39

Triad

The Triadic color harmony groups three colors that are evenly spaced from another and form a triangle on the color wheel.



FF4676



46A120



00A0FF

Complementary

The Complementary color scheme is a pair of colors which are on the opposite of each other on the color wheel.



FF4676



46FFCF

Split Complementary

Split-complementary colors differ from the complementary color scheme. The scheme consists of three colors, the original color and two neighbors of the complement color.



00A9E4



FF4676



00A864

Square

The Square scheme is like the rectangle color scheme, but the four colors are evenly spaced on the color wheel.



FF4676



929300



00ABA8



008DFF

Rectangle

The Rectangle color scheme consists of four colors that form a rectangle on the color wheel.



FF4676



D87308



00ABA8



00A4FF

Sweetspot

The Sweet Spot groups the original color and five complimentary colors.



FF4676



FFC7D5



CE46FF



805E67



000000



808080

Same Dimension

The Same Dimension uses a secret algorithm to generate beautiful new colors.



FF4676



FF215B



FF7146



807376



BF0032



400011

Inverse Universe

The Inverse Universe completely reimagines the original color for something new.



FF4676



FF215B



46D4FF



807376



BF0032



400011

Previews

White Background



This preview shows how the Hex color FF4676 looks on a white background.

Color Contrast Check

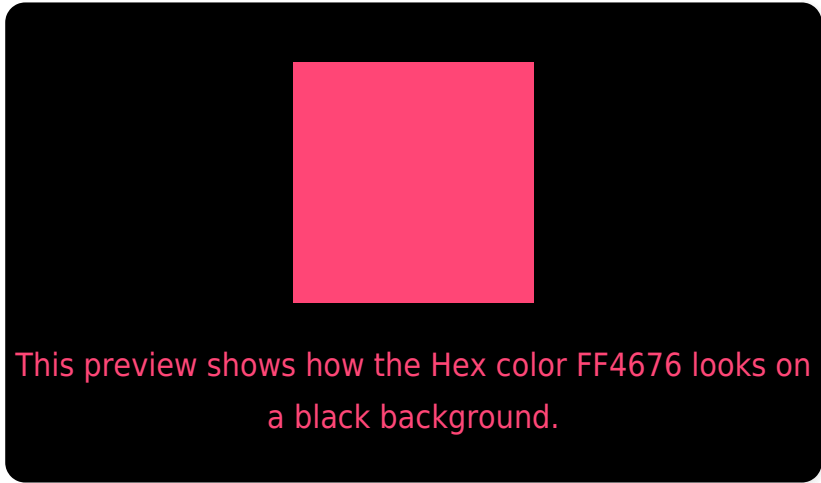
Large Text (above 18pt) WCAG AA ✓ Pass

Any Text WCAG AA × Fail

Large Text (above 18pt) WCAG AAA × Fail

Any Text WCAG AAA × Fail

Black Background



Color Contrast Check

Large Text (above 18pt) WCAG AA ✓ Pass

Any Text WCAG AA ✓ Pass

Large Text (above 18pt) WCAG AAA ✓ Pass

Any Text WCAG AAA × Fail

If you want to check with other color combinations, try the [Color Contrast Checker](#).

Hex FF4676 Background



This preview shows how black text looks on a background with the Hex color FF4676.



This preview shows how white text looks on a background with the Hex color FF4676.

Color Blindness Simulation

Color vision deficiency is a very complex topic, and I could not describe the different causes any better than Wikipedia does, so if you want to learn more, you should check out their [article about color blindness](#).

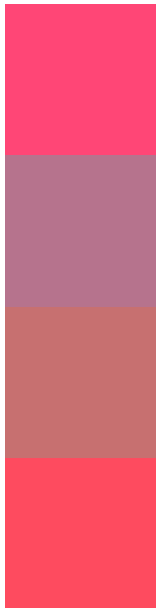
Dichromacy





Tritanopia
FD4E52

Trichromacy



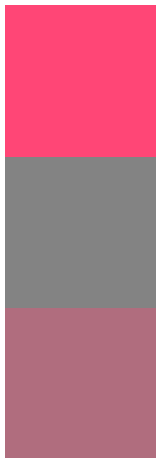
Original Color
FF4676

Protanomaly
B6738D

Deuteranomaly
C77070

Tritanomaly
FE4B5F

Monochromacy



Original Color
FF4676

Achromatopsia
838383

Achromatomaly
B06D7E

CSS Examples

Text

The CSS property to change the color of the text to Hex FF4676 is called "color". The color property can be set on classes, ids or directly on the HTML element.

This example shows how text in the color #FF4676 looks like.

```
.text, #text, p{  
    color:#FF4676  
}
```

If you want to add a text shadow in that color use the text-shadow property, you can generate a text shadow directly with our [CSS Text Shadow Generator](#).

Here you see how black text with a 4 pixel #FF4676 colored shadow looks like.

```
.shadow{ text-shadow: 4px 4px 2px #FF4676
}
```

Border

The CSS property to change the border of an element to Hex FF4676 is called "border". The border property can be set on classes, ids or directly on the HTML element.

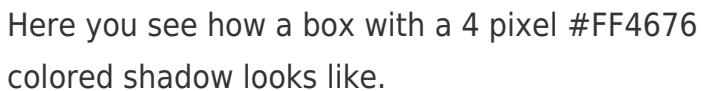
This example shows the color as border, it can be applied via the CSS property "border" or "border-color".

```
.border, #border, table{ border:4px solid
#FF4676 }
```

If only the border color should be changed use the property `border-color`.

```
.border{ border-color:#FF4676 }
```

If you want to add a box shadow in that color use:



Here you see how a box with a 4 pixel #FF4676 colored shadow looks like.

```
.boxshadow{ -moz-box-shadow:4px 4px 4px  
4px #FF4676; -webkit-box-shadow:4px 4px  
4px 4px #FF4676; box-shadow:4px 4px 4px  
4px #FF4676 }
```

Background

The CSS property to change the background color of an element to Hex FF4676 is called "background". The background property can be set on classes, ids or directly on the HTML element.

```
.background, #background, body{  
background:#FF4676 }
```

If only the background color should be changed can be used:

```
.background{ background-color:#FF4676 }
```

This example shows the color as background, it is applied via the CSS property "background".

To optimize and compress your CSS code, you can use our [online CSS compressor and optimizer](#) based on csstidy. If you want to create a linear or radial gradient as background or border, check our [CSS Gradient Generator](#).

Hey! You found this booklet interesting? Support Converting Colors with the new Membership Option!

The pro membership hides all ads, plus gives you double the colors in the color bucket, and more awesome pro features!

[Learn more, Memberships starting at \\$2.50/m!](#)

**Follow me
on Twitter!**

@ConvertingColor