

# Converting Colors

Hex(FF467B)

Have a look what the booklet for  
Hex(FF467B) contains.

|  |    |
|--|----|
| <b>Hex(FF467B)</b> .....                       | 3  |
| <b><i>Conversions</i></b> .....                | 4  |
| <b><i>Details</i></b> .....                    | 6  |
| <b><i>Harmonies</i></b> .....                  | 11 |
| <b><i>Previews</i></b> .....                   | 23 |
| <b><i>Color Blindness Simulation</i></b> ..... | 26 |
| <b><i>CSS Examples</i></b> .....               | 29 |

**Color**

**Hex(F467B)**

# Conversions

## Conversions Part 1

| Format      | Color                      |
|-------------|----------------------------|
| Hex         | FF467B                     |
| RGB         | 255, 70, 123               |
| RGB Percent | 100%, 27%, 48%             |
| CMY         | 0.0000, 0.7255, 0.5176     |
| CMYK        | 0.00, 0.73, 0.52, 0.00     |
| HSL         | 343°, 100%, 64%            |
| HSV         | 343°, 73%, 100%            |
| XYZ         | 47.0053, 27.0704, 21.4865  |
| YIQ         | 131.3570, 93.2470, 55.7030 |

# Conversions

## Conversions Part 2

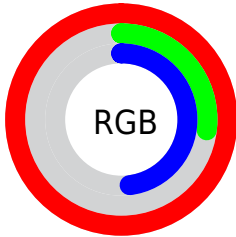
| <b>Format</b>                       | <b>Color</b>                                |
|-------------------------------------|---|
| <a href="#">RYB</a>                 | <a href="#">255, 70, 123</a>                |
| Decimal                             | <a href="#">16729723</a>                    |
| CIELab                              | <a href="#">59.04, 71.96, 12.94</a>         |
| CIElCh                              | <a href="#">59, 73.111, 10.194</a>          |
| Yxy                                 | <a href="#">27.0704, 0.4919, 0.2833</a>     |
| Android<br>(android.graphics.Color) | <a href="#">4294919803<br/>(0xFFFF467B)</a> |
| YUV                                 | <a href="#">131.3570, -4.1200, 108.4349</a> |
| Hunter-Lab                          | <a href="#">52.0292, 70.2131, 11.9354</a>   |

# Details

The Hex color **FF467B** is a dark color, and the websafe version is hex **FF3366**. The color can be described as middle washed rose. A complement of this color would be **46FFCA**, and the grayscale version is **838383**.

A 20% lighter version of the original color is **FF83AF**, and **C0004B** is the 20% darker color. If you saturate the color by 10%, you get **FF2D69**, and if you desaturate by 10%, it is **FF608D**.

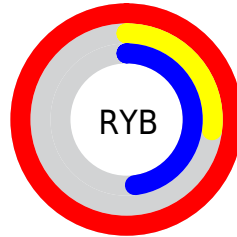
# Distribution



Red (100%)

Green (27%)

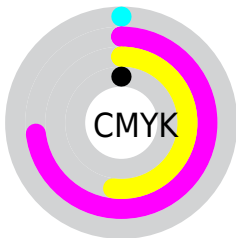
Blue (48%)



Red (100%)

Yellow (27%)

Blue (48%)

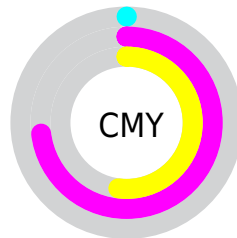


Cyan (0%)

Magenta (73%)

Yellow (52%)

Black (0%)



Cyan (0%)

Magenta (73%)

Yellow (52%)

# Brightness & Saturation Gradients

These gradients show how the Hex color FF467B changes by changing the brightness by 10 percent. The first figure shows a shift by +10% for each color and the second figure -10%.

Similar to the brightness gradients but the following saturation gradients show a change of the Hex color FF467B by changing the saturation by 10% instead.



 FF467B

 FF467B

FFFFFF

 DF1F62

 FF83AF

 C0004B

 FFA1CA

 A10035

 FFBEE7

 820020

 FFDCCF

 640008

 FFFAFF

 470004

 260001

 000000

 FF467B

 FF467B

 FF2D69

 FF608D

 FF1357

 FF799F

 FF0049

 FF93B2

 FFACC4

 FFC6D6

 FFDFE8

 FFF9FA

FFFFFF

# Harmonies

## Analogous

The Analogous color harmony consists of three colors that are next to each other on the color wheel.



EA52BB



FF467B



F25D3E

# Triad

The Triadic color harmony groups three colors that are evenly spaced from another and form a triangle on the color wheel.



FF467B



4EA11B



00A1FF

# Complementary

The Complementary color scheme is a pair of colors which are on the opposite of each other on the color wheel.



FF467B



46FFCA

# Split Complementary

Split-complementary colors differ from the complementary color scheme. The scheme consists of three colors, the original color and two neighbors of the complement color.



00A9E0



FF467B



00A860

# Square

The Square scheme is like the rectangle color scheme, but the four colors are evenly spaced on the color wheel.



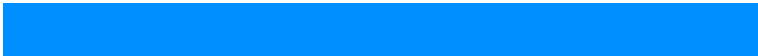
FF467B



979200



00ABA3



008FFF

# Rectangle

The Rectangle color scheme consists of four colors that form a rectangle on the color wheel.



FF467B



DB7111



00ABA3



00A5FD



# Sweetspot

The Sweet Spot groups the original color and five complimentary colors.



FF467B



FFC7D7



C846FF



805E68



000000



808080



# Same Dimension

The Same Dimension uses a secret algorithm to generate beautiful new colors.



FF467B



FF2161



FF6B46



807376



BF0037



400012



# Inverse Universe

The Inverse Universe completely reimagines the original color for something new.



FF467B



FF2161



46DAFF



807376



BF0037



400012



# Previews

## White Background



This preview shows how the Hex color FF467B looks on a white background.

## Color Contrast Check

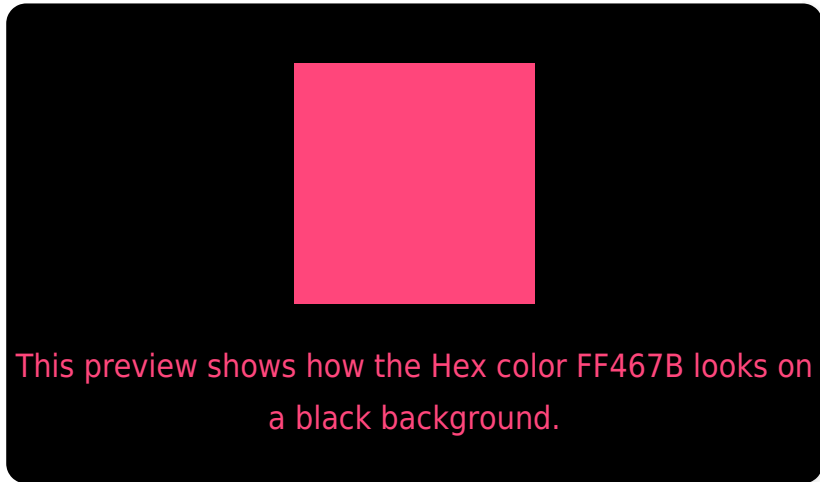
Large Text (above 18pt) WCAG AA ✓ Pass

Any Text WCAG AA × Fail

Large Text (above 18pt) WCAG AAA × Fail

Any Text WCAG AAA × Fail

# Black Background



## Color Contrast Check

Large Text (above 18pt) WCAG AA ✓ Pass

Any Text WCAG AA ✓ Pass

Large Text (above 18pt) WCAG AAA ✓ Pass

Any Text WCAG AAA × Fail

If you want to check with other color combinations, try the [Color Contrast Checker](#).



## Hex FF467B Background



This preview shows how black text looks on a background with the Hex color FF467B.



This preview shows how white text looks on a background with the Hex color FF467B.

# Color Blindness Simulation

Color vision deficiency is a very complex topic, and I could not describe the different causes any better than Wikipedia does, so if you want to learn more, you should check out their [article about color blindness](#).

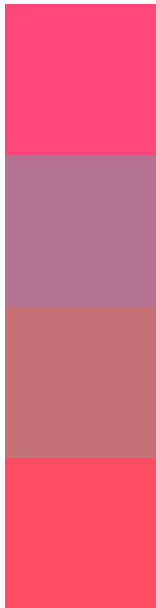
## Dichromacy





**Tritanopia**  
FD4F53

# Trichromacy



**Original Color**  
FF467B

**Protanomaly**  
B57393

**Deuteranomaly**  
C67175

**Tritanomaly**  
FE4C62

# Monochromacy



**Original Color**  
FF467B

**Achromatopsia**  
838383

**Achromatomaly**  
B06D80

# CSS Examples

## Text

The CSS property to change the color of the text to Hex FF467B is called "color". The color property can be set on classes, ids or directly on the HTML element.

This example shows how text in the color #FF467B looks like.

```
.text, #text, p{  
    color:#FF467B  
}
```

If you want to add a text shadow in that color use the text-shadow property, you can generate a text shadow directly with our [CSS Text Shadow Generator](#).

Here you see how black text with a 4 pixel #FF467B colored shadow looks like.

```
.shadow{ text-shadow: 4px 4px 2px #FF467B
}
```

## Border

The CSS property to change the border of an element to Hex FF467B is called "border". The border property can be set on classes, ids or directly on the HTML element.

This example shows the color as border, it can be applied via the CSS property "border" or "border-color".

```
.border, #border, table{ border:4px solid
#FF467B }
```

If only the border color should be changed use the property `border-color`.

```
.border{ border-color:#FF467B }
```

If you want to add a box shadow in that color use:

Here you see how a box with a 4 pixel #FF467B colored shadow looks like.

```
.boxshadow{ -moz-box-shadow:4px 4px 4px  
4px #FF467B; -webkit-box-shadow:4px 4px  
4px 4px #FF467B; box-shadow:4px 4px 4px  
4px #FF467B }
```

# Background

The CSS property to change the background color of an element to Hex FF467B is called "background". The background property can be set on classes, ids or directly on the HTML element.

```
.background, #background, body{  
background:#FF467B }
```

If only the background color should be changed can be used:

```
.background{ background-color:#FF467B }
```

This example shows the color as background, it is applied via the CSS property "background".

To optimize and compress your CSS code, you can use our [online CSS compressor and optimizer](#) based on csstidy. If you want to create a linear or radial gradient as background or border, check our [CSS Gradient Generator](#).



Hey! You found this booklet interesting? Support Converting Colors with the new Membership Option!

The pro membership hides all ads, plus gives you double the colors in the color bucket, and more awesome pro features!

**[Learn more, Memberships starting at \\$2.50/m!](#)**

**Follow me  
on Twitter!**

@ConvertingColor