

Converting Colors

Hex(FF476D)

Have a look what the booklet for
Hex(FF476D) contains.

Hex(FF476D)	3
<i>Conversions</i>	4
<i>Details</i>	6
<i>Harmonies</i>	11
<i>Previews</i>	23
<i>Color Blindness Simulation</i>	26
<i>CSS Examples</i>	29

Color

Hex(F476D)

Conversions

Conversions Part 1

Format	Color
Hex	FF476D
RGB	255, 71, 109
RGB Percent	100%, 28%, 43%
CMY	0.0000, 0.7216, 0.5725
CMYK	0.00, 0.72, 0.57, 0.00
HSL	348°, 100%, 64%
HSV	348°, 72%, 100%
XYZ	46.2536, 26.8706, 17.2167
YIQ	130.3480, 97.4660, 50.8260

Conversions

Conversions Part 2

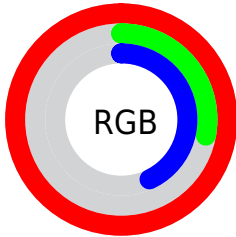
Format	Color
RYB	255, 71, 109
Decimal	16729965
CIELab	58.85, 70.64, 20.91
CIElCh	59, 73.665, 16.490
Yxy	26.8706, 0.5120, 0.2974
Android (android.graphics.Color)	4294920045 (0xFFFF476D)
YUV	130.3480, -10.5246, 109.3198
Hunter-Lab	51.8369, 68.5594, 16.5937

Details

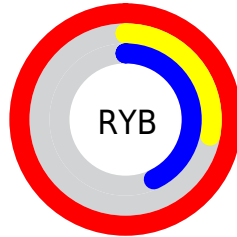
The Hex color **FF476D** is a dark color, and the websafe version is hex **FF3366**. The color can be described as middle washed rose. A complement of this color would be **47FFD9**, and the grayscale version is **828282**.

A 20% lighter version of the original color is **FF84A0**, and **BF003E** is the 20% darker color. If you saturate the color by 10%, you get **FF2E59**, and if you desaturate by 10%, it is **FF6181**.

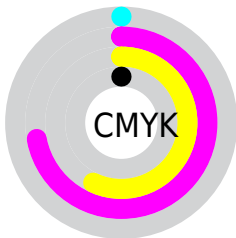
Distribution



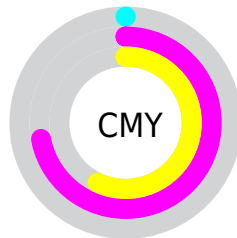
- Red (100%)
- Green (28%)
- Blue (43%)



- Red (100%)
- Yellow (28%)
- Blue (43%)



- Cyan (0%)
- Magenta (72%)
- Yellow (57%)
- Black (0%)



- Cyan (0%)
- Magenta (72%)
- Yellow (57%)

Brightness & Saturation Gradients

These gradients show how the Hex color FF476D changes by changing the brightness by 10 percent. The first figure shows a shift by +10% for each color and the second figure -10%.

Similar to the brightness gradients but the following saturation gradients show a change of the Hex color FF476D by changing the saturation by 10% instead.

 FF476D

 FF476D

FFFFFF

 DF2255

 FF84A0

 BF003E

 FFA1BB

 A00029

 FFBFD7

 810015

 FFDCF3

 620001

 FFFAFF

 450003

 240001

 000000

 FF476D

 FF476D

 FF2E59

 FF6181

 FF1445

 FF7A95

 FF0035

 FF93AA

 FFADBE

 FFC7D2

 FFE0E6

 FFFAFB

FFFFFF

Harmonies

Analogous

The Analogous color harmony consists of three colors that are next to each other on the color wheel.



F24BAE



FF476D



EC6230

Triad

The Triadic color harmony groups three colors that are evenly spaced from another and form a triangle on the color wheel.



FF476D



35A229



009EFF

Complementary

The Complementary color scheme is a pair of colors which are on the opposite of each other on the color wheel.



FF476D



47FFD9

Split Complementary

Split-complementary colors differ from the complementary color scheme. The scheme consists of three colors, the original color and two neighbors of the complement color.



00A8EB



FF476D



00A96D

Square

The Square scheme is like the rectangle color scheme, but the four colors are evenly spaced on the color wheel.



FF476D



899600



00ABB1



3C89FF

Rectangle

The Rectangle color scheme consists of four colors that form a rectangle on the color wheel.



FF476D



D27700



00ABB1



00A2FF

Sweetspot

The Sweet Spot groups the original color and five complimentary colors.



FF476D



FFC7D2



D747FF



805E65



000000



808080

Same Dimension

The Same Dimension uses a secret algorithm to generate beautiful new colors.



FF476D



FF214F



FF7B47



807375



BF0027



40000D

Inverse Universe

The Inverse Universe completely reimagines the original color for something new.



FF476D



FF214F



47CBFF



807375



BF0027



40000D

Previews

White Background



This preview shows how the Hex color FF476D looks on a white background.

Color Contrast Check

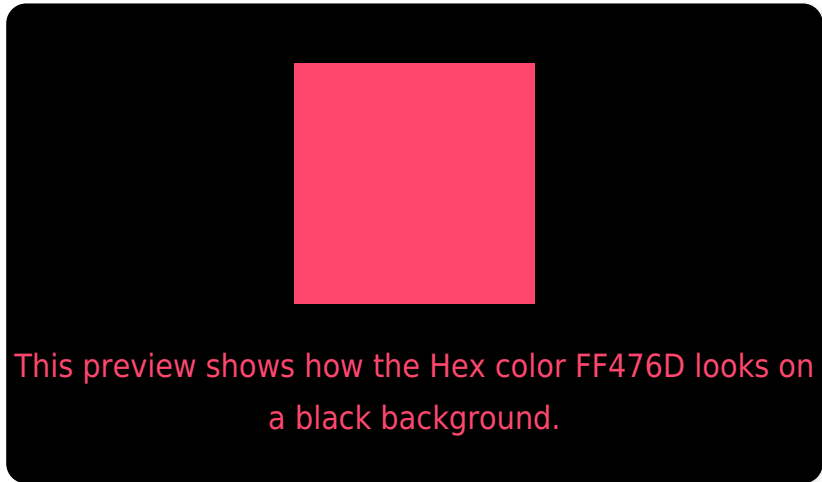
Large Text (above 18pt) WCAG AA ✓ Pass

Any Text WCAG AA × Fail

Large Text (above 18pt) WCAG AAA × Fail

Any Text WCAG AAA × Fail

Black Background



Color Contrast Check

Large Text (above 18pt) WCAG AA ✓ Pass

Any Text WCAG AA ✓ Pass

Large Text (above 18pt) WCAG AAA ✓ Pass

Any Text WCAG AAA × Fail

If you want to check with other color combinations, try the [Color Contrast Checker](#).

Hex FF476D Background



This preview shows how black text looks on a background with the Hex color FF476D.



This preview shows how white text looks on a background with the Hex color FF476D.

Color Blindness Simulation

Color vision deficiency is a very complex topic, and I could not describe the different causes any better than Wikipedia does, so if you want to learn more, you should check out their [article about color blindness](#).

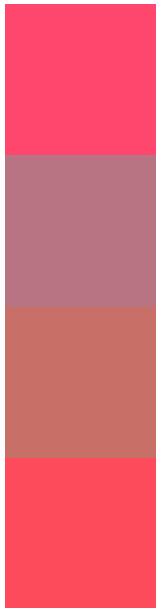
Dichromacy





Tritanopia
FE4D51

Trichromacy



Original Color
FF476D

Protanomaly
B87482

Deuteranomaly
C87067

Tritanomaly
FE4B5B

Monochromacy



Original Color
FF476D

Achromatopsia
828282

Achromatomaly
AF6D7A

CSS Examples

Text

The CSS property to change the color of the text to Hex FF476D is called "color". The color property can be set on classes, ids or directly on the HTML element.

This example shows how text in the color #FF476D looks like.

```
.text, #text, p{  
  color:#FF476D  
}
```

If you want to add a text shadow in that color use the text-shadow property, you can generate a text shadow directly with our [CSS Text Shadow Generator](#).

Here you see how black text with a 4 pixel #FF476D colored shadow looks like.

```
.shadow{ text-shadow: 4px 4px 2px #FF476D
}
```

Border

The CSS property to change the border of an element to Hex FF476D is called "border". The border property can be set on classes, ids or directly on the HTML element.

This example shows the color as border, it can be applied via the CSS property "border" or "border-color".

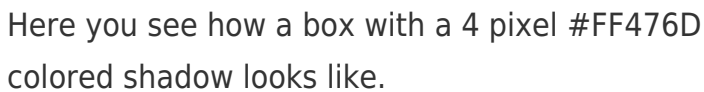
```
.border, #border, table{ border:4px solid
#FF476D }
```

If only the border color should be changed use the property `border-color`.

```
.border{ border-color:#FF476D }
```

If you want to add a box shadow in that color use:

Here you see how a box with a 4 pixel #FF476D colored shadow looks like.



```
.boxshadow{ -moz-box-shadow:4px 4px 4px  
4px #FF476D; -webkit-box-shadow:4px 4px  
4px 4px #FF476D; box-shadow:4px 4px 4px  
4px #FF476D }
```

Background

The CSS property to change the background color of an element to Hex FF476D is called "background". The background property can be set on classes, ids or directly on the HTML element.

```
.background, #background, body{  
background:#FF476D }
```

If only the background color should be changed can be used:

```
.background{ background-color:#FF476D }
```

This example shows the color as background, it is applied via the CSS property "background".

To optimize and compress your CSS code, you can use our [online CSS compressor and optimizer](#) based on csstidy. If you want to create a linear or radial gradient as background or border, check our [CSS Gradient Generator](#).

Hey! You found this booklet interesting? Support Converting Colors with the new Membership Option!

The pro membership hides all ads, plus gives you double the colors in the color bucket, and more awesome pro features!

[Learn more, Memberships starting at \\$2.50/m!](#)

**Follow me
on Twitter!**

@ConvertingColor