

Converting Colors

Hex(F4B7D)

Have a look what the booklet for
Hex(FF4B7D) contains.

Hex(FF4B7D)	3
<i>Conversions</i>	4
<i>Details</i>	6
<i>Harmonies</i>	11
<i>Previews</i>	23
<i>Color Blindness Simulation</i>	26
<i>CSS Examples</i>	29

Color

Hex(F4B7D)

Conversions

Conversions Part 1

Format	Color
Hex	FF4B7D
RGB	255, 75, 125
RGB Percent	100%, 29%, 49%
CMY	0.0000, 0.7059, 0.5098
CMYK	0.00, 0.71, 0.51, 0.00
HSL	343°, 100%, 65%
HSV	343°, 71%, 100%
XYZ	47.4577, 27.7728, 22.2614
YIQ	134.5200, 91.2300, 53.7100

Conversions

Conversions Part 2

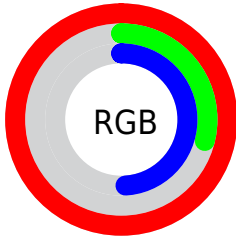
Format	Color
R_{YB}	255, 75, 125
Decimal	16731005
CIE _{Lab}	59.68, 70.45, 12.67
CIE _{LCh}	60, 71.577, 10.192
Yxy	27.7728, 0.4868, 0.2849
Android (android.graphics.Color)	4294921085 (0xFFFF4B7D)
YUV	134.5200, -4.6934, 105.6610
Hunter-Lab	52.6999, 68.5193, 11.8448

Details

The Hex color **FF4B7D** is a dark color, and the websafe version is hex **FF3366**. The color can be described as middle washed rose. A complement of this color would be **4BFFCD**, and the grayscale version is **878787**.

A 20% lighter version of the original color is **FF87B1**, and **C0004D** is the 20% darker color. If you saturate the color by 10%, you get **FF326B**, and if you desaturate by 10%, it is **FF658F**.

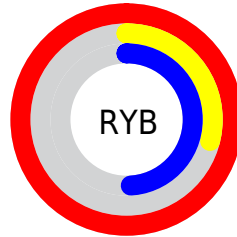
Distribution



Red (100%)

Green (29%)

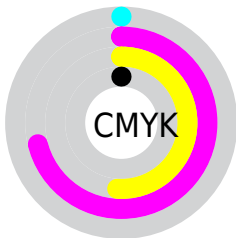
Blue (49%)



Red (100%)

Yellow (29%)

Blue (49%)

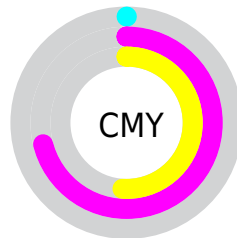


Cyan (0%)

Magenta (71%)

Yellow (51%)

Black (0%)



Cyan (0%)

Magenta (71%)

Yellow (51%)

Brightness & Saturation Gradients

These gradients show how the Hex color FF4B7D changes by changing the brightness by 10 percent. The first figure shows a shift by +10% for each color and the second figure -10%.

Similar to the brightness gradients but the following saturation gradients show a change of the Hex color FF4B7D by changing the saturation by 10% instead.

 FF4B7D

 FF4B7D

FFFFFF

 DF2764

 FF87B1

 C0004D

 FFA5CD

 A10036

 FFC2E9

 830022

 FFE0FF

 64000B

FFFEFF

 480004

 270001

 000000

 FF4B7D

 FF4B7D

 FF326B

 FF658F

 FF1858

 FF7EA2

 FF0047

 FF98B4

 FFB1C7

 FFCBD9

 FFE4EC

FFFEFE

FFFFFF

Harmonies

Analogous

The Analogous color harmony consists of three colors that are next to each other on the color wheel.



EA56BC



FF4B7D



F36041

Triad

The Triadic color harmony groups three colors that are evenly spaced from another and form a triangle on the color wheel.



FF4B7D



52A221



00A2FF

Complementary

The Complementary color scheme is a pair of colors which are on the opposite of each other on the color wheel.



FF4B7D



4BFFCD

Split Complementary

Split-complementary colors differ from the complementary color scheme. The scheme consists of three colors, the original color and two neighbors of the complement color.



00AAE0



FF4B7D



00AA62

Square

The Square scheme is like the rectangle color scheme, but the four colors are evenly spaced on the color wheel.



FF4B7D



999400



00ACA4



0090FF

Rectangle

The Rectangle color scheme consists of four colors that form a rectangle on the color wheel.



FF4B7D



DC7418



00ACA4



00A6FD

Sweetspot

The Sweet Spot groups the original color and five complimentary colors.



FF4B7D



FFC9D8



CC4BFF



806068



000000



808080

Same Dimension

The Same Dimension uses a secret algorithm to generate beautiful new colors.



FF4B7D



FF2662



FF724B



807376



BF0035



400012

Inverse Universe

The Inverse Universe completely reimagines the original color for something new.



FF4B7D



FF2662



4BD8FF



807376



BF0035



400012

Previews

White Background



This preview shows how the Hex color FF4B7D looks on a white background.

Color Contrast Check

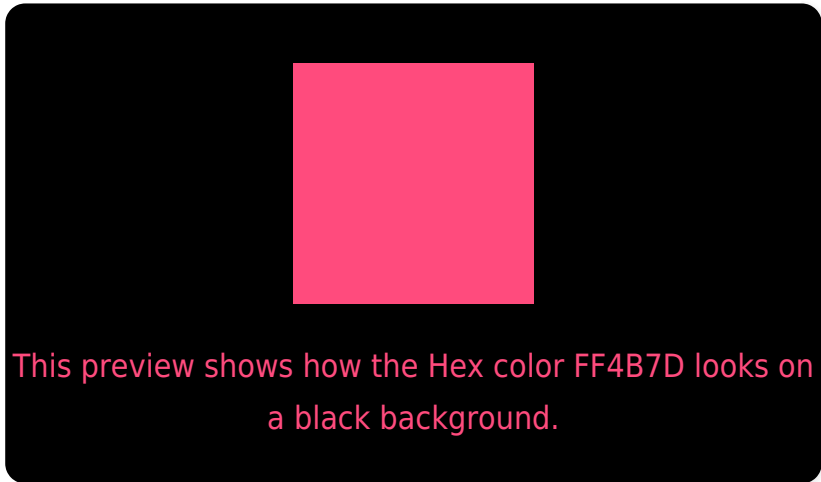
Large Text (above 18pt) WCAG AA ✓ Pass

Any Text WCAG AA × Fail

Large Text (above 18pt) WCAG AAA × Fail

Any Text WCAG AAA × Fail

Black Background



Color Contrast Check

Large Text (above 18pt) WCAG AA ✓ Pass

Any Text WCAG AA ✓ Pass

Large Text (above 18pt) WCAG AAA ✓ Pass

Any Text WCAG AAA × Fail

If you want to check with other color combinations, try the [Color Contrast Checker](#).

Hex FF4B7D Background



This preview shows how black text looks on a background with the Hex color FF4B7D.



This preview shows how white text looks on a background with the Hex color FF4B7D.

Color Blindness Simulation

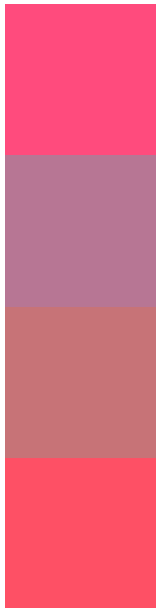
Color vision deficiency is a very complex topic, and I could not describe the different causes any better than Wikipedia does, so if you want to learn more, you should check out their [article about color blindness](#).

Dichromacy





Trichromacy



Original Color
FF4B7D

Protanomaly
B77694

Deuteranomaly
C77377

Tritanomaly
FE5065

Monochromacy



Original Color
FF4B7D

Achromatopsia
878787

Achromatomaly
B37183

CSS Examples

Text

The CSS property to change the color of the text to Hex FF4B7D is called "color". The color property can be set on classes, ids or directly on the HTML element.

This example shows how text in the color #FF4B7D looks like.

```
.text, #text, p{  
    color:#FF4B7D  
}
```

If you want to add a text shadow in that color use the text-shadow property, you can generate a text shadow directly with our [CSS Text Shadow Generator](#).

Here you see how black text with a 4 pixel #FF4B7D colored shadow looks like.

```
.shadow{ text-shadow: 4px 4px 2px #FF4B7D
}
```

Border

The CSS property to change the border of an element to Hex FF4B7D is called "border". The border property can be set on classes, ids or directly on the HTML element.

This example shows the color as border, it can be applied via the CSS property "border" or "border-color".

```
.border, #border, table{ border:4px solid
#FF4B7D }
```

If only the border color should be changed use the property `border-color`.

```
.border{ border-color:#FF4B7D }
```

If you want to add a box shadow in that color use:

Here you see how a box with a 4 pixel #FF4B7D colored shadow looks like.

```
.boxshadow{ -moz-box-shadow:4px 4px 4px  
4px #FF4B7D; -webkit-box-shadow:4px 4px  
4px 4px #FF4B7D; box-shadow:4px 4px 4px  
4px #FF4B7D }
```

Background

The CSS property to change the background color of an element to Hex FF4B7D is called "background". The background property can be set on classes, ids or directly on the HTML element.

```
.background, #background, body{  
background:#FF4B7D }
```

If only the background color should be changed can be used:

```
.background{ background-color:#FF4B7D }
```

This example shows the color as background, it is applied via the CSS property "background".

To optimize and compress your CSS code, you can use our [online CSS compressor and optimizer](#) based on csstidy. If you want to create a linear or radial gradient as background or border, check our [CSS Gradient Generator](#).

Hey! You found this booklet interesting? Support Converting Colors with the new Membership Option!

The pro membership hides all ads, plus gives you double the colors in the color bucket, and more awesome pro features!

[Learn more, Memberships starting at \\$2.50/m!](#)

**Follow me
on Twitter!**

@ConvertingColor